



## **Set Up Guide\_Pragmasys User Default**

Version 1.0.0.0

**Document Version History**

#	Date	Author	Reason	Version
1	14/09/17	Pragmasys	Initial Version	0.1

---

**Table of Contents**

**1. User Default ..... 4**

    1.1 Introduction..... 4

**2. User Default Installation ..... 4**

    2.1 Steps to Configure User Default on CRM: ..... 4

## 1. User Default

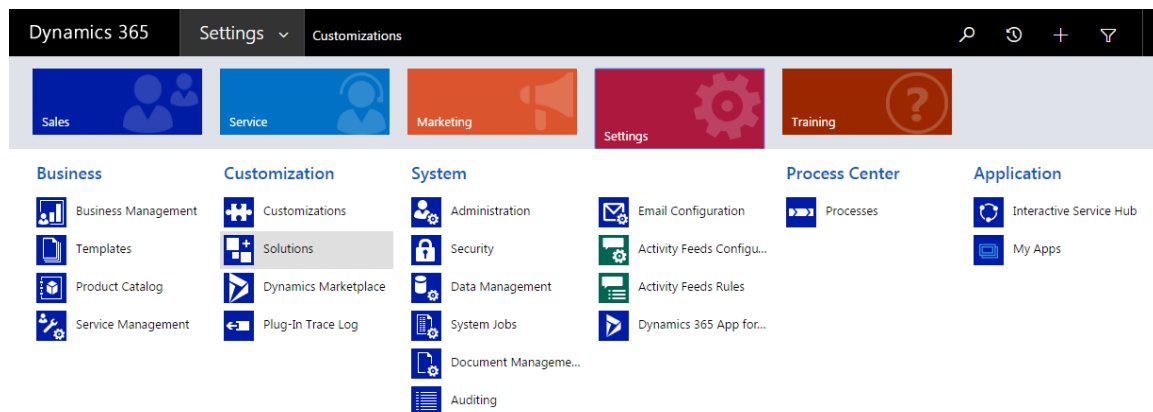
### 1.1 Introduction

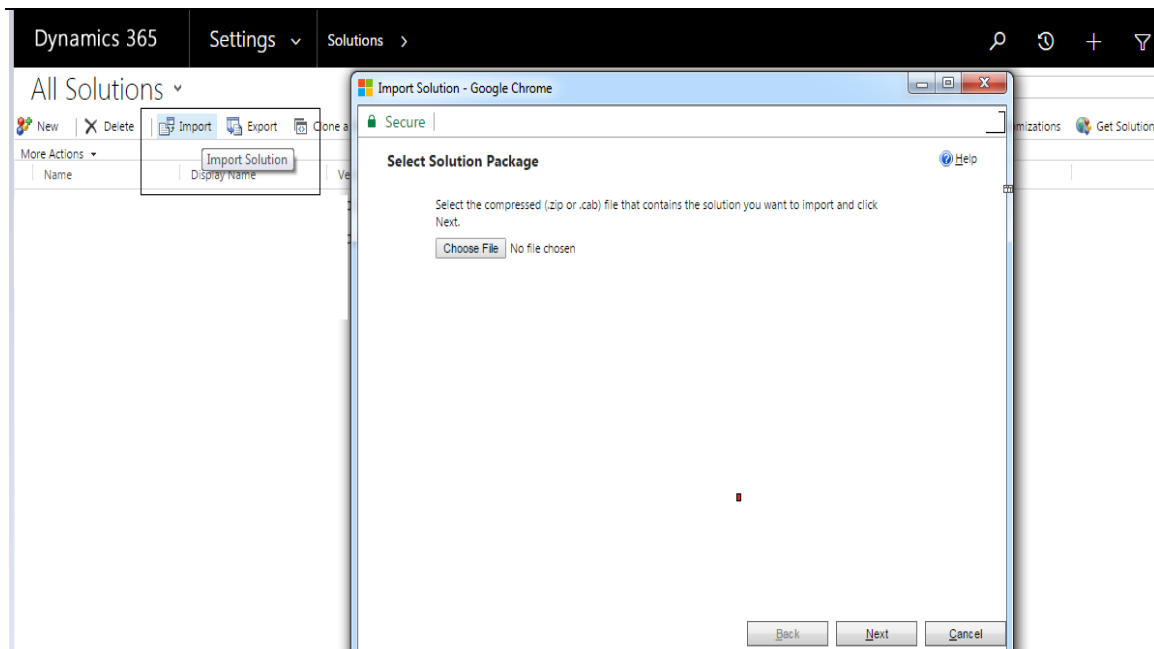
This is a setup guide which depicts the importing of solution to enable the buttons i.e. 'saved default' and 'load default' basis user specific.

## 2. User Default Installation

### 2.1 Steps to Configure User Default on CRM:


1. Login into MS CRM using the System Administrator/Customizer role.
2. Navigate to Customizations>Solutions>Import the solutions.
3. Import the solution named "PragmasysUserDefault\_1\_0\_0\_0\_managed".
4. Close the window once the solution installed successfully.



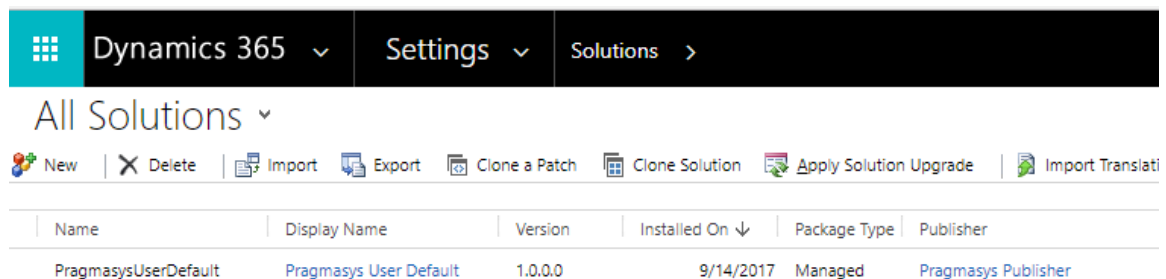


- Browse and import the below solutions.

Name

 PragmasysUserDefault\_1\_0\_0\_0\_managed

- Check under the solutions once import done successfully.



Name	Display Name	Version	Installed On	Package Type	Publisher
PragmasysUserDefault	Pragmasys User Default	1.0.0.0	9/14/2017	Managed	Pragmasys Publisher