

Predictive Maintenance 4-week Jumpstart Program

For manufacturing, heavy engineering and pharmaceutical companies



For decades industrial organizations have witnessed proliferating volumes of data and the constant pressure to maintain scalability and cost efficiency into their operations. Predictive Analytics helps organizations gain the highest return on critical assets by supporting their predictive maintenance.

Hanu's Predictive Maintenance solution provides early warning notification and diagnosis of equipment issues days, weeks or months before failure. This helps asset-intensive organizations reduce equipment downtime, increase reliability, and improve performance while reducing operations and maintenance expenditures.

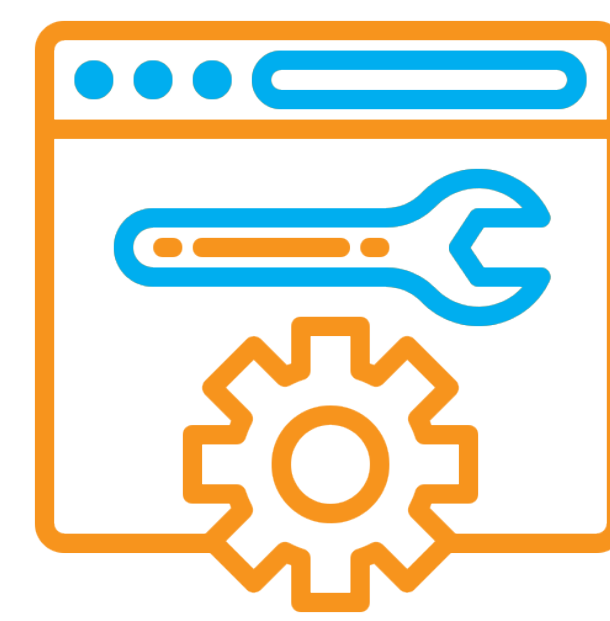
It also integrates with a wide variety of data gathering IOT technologies and control and monitoring systems in the cloud. The system is highly scalable and can be used to monitor a single asset, plant or hundreds of remote assets across multiple sites.

Our Predictive Maintenance solutions combines the power of Azure Synapse and our deep industry experience for predictive equipment maintenance. Benefits and use-cases of Predictive Maintenance :



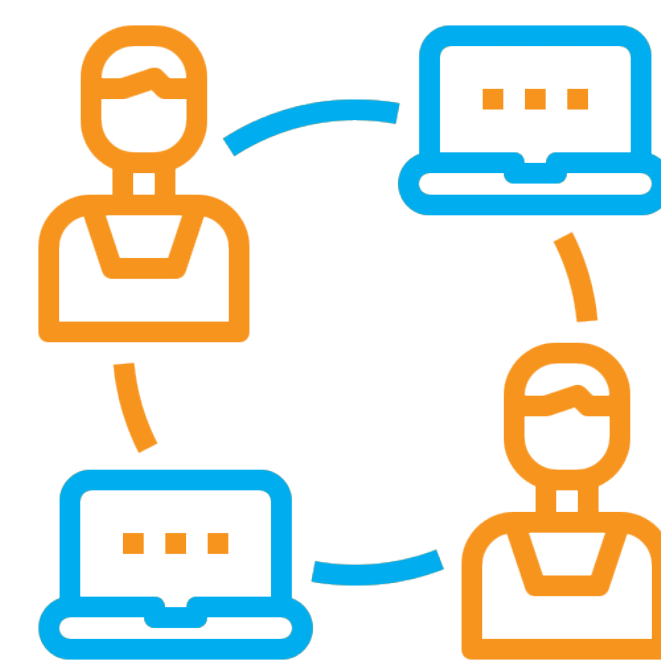
Real-time alerts

Real-time data and monitoring are setup with rich dashboards (including mobile), process and asset-centric visualization and alerting. Alerts can be managed in a variety of ways including by alert category, level, criticality, duration, and frequency. Each alert event is also directly linked to a graphical trend for that asset that shows the event data, threshold limits, and times when the values are in alarm.



Reduce downtime, tool failure, and maintenance demands

With the insights, organizations can avoid machine failures and unplanned downtime, increase equipment and production line productivity, and reduce maintenance costs. It could help 25%-30% reduction in maintenance costs, a 70%-75% decrease of breakdowns and a 35%-45% reduction in downtime.

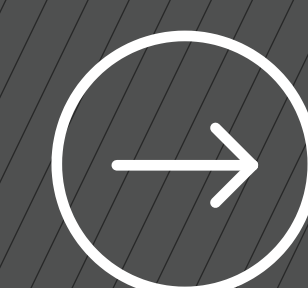


Remote Maintenance

With remote and mobile asset tracking and monitoring data, one can build remote and mobile diagnostic analytics models. With remote diagnostics, it would be possible to give maintenance recommendations or information to operators that are on location to further reduce the need for field technician's visit.

About Hanu

- > 11+ years on Azure with more than 800 engagements
- > Microsoft Azure Expert Managed Service Provider and Cloud Solution Provider
- > Microsoft Gold Certified in Cloud Productivity, Data Analytics and Platform with Advanced Specializations in Modernization of Web Applications
- > Microsoft India Partner of the year 2021 for Azure Technology and Microsoft US Partner of the Year 2020 for Azure Data Estate Modernization
- > Recognized by reputed institutes like ISG and Gartner for Azure capabilities



Get started

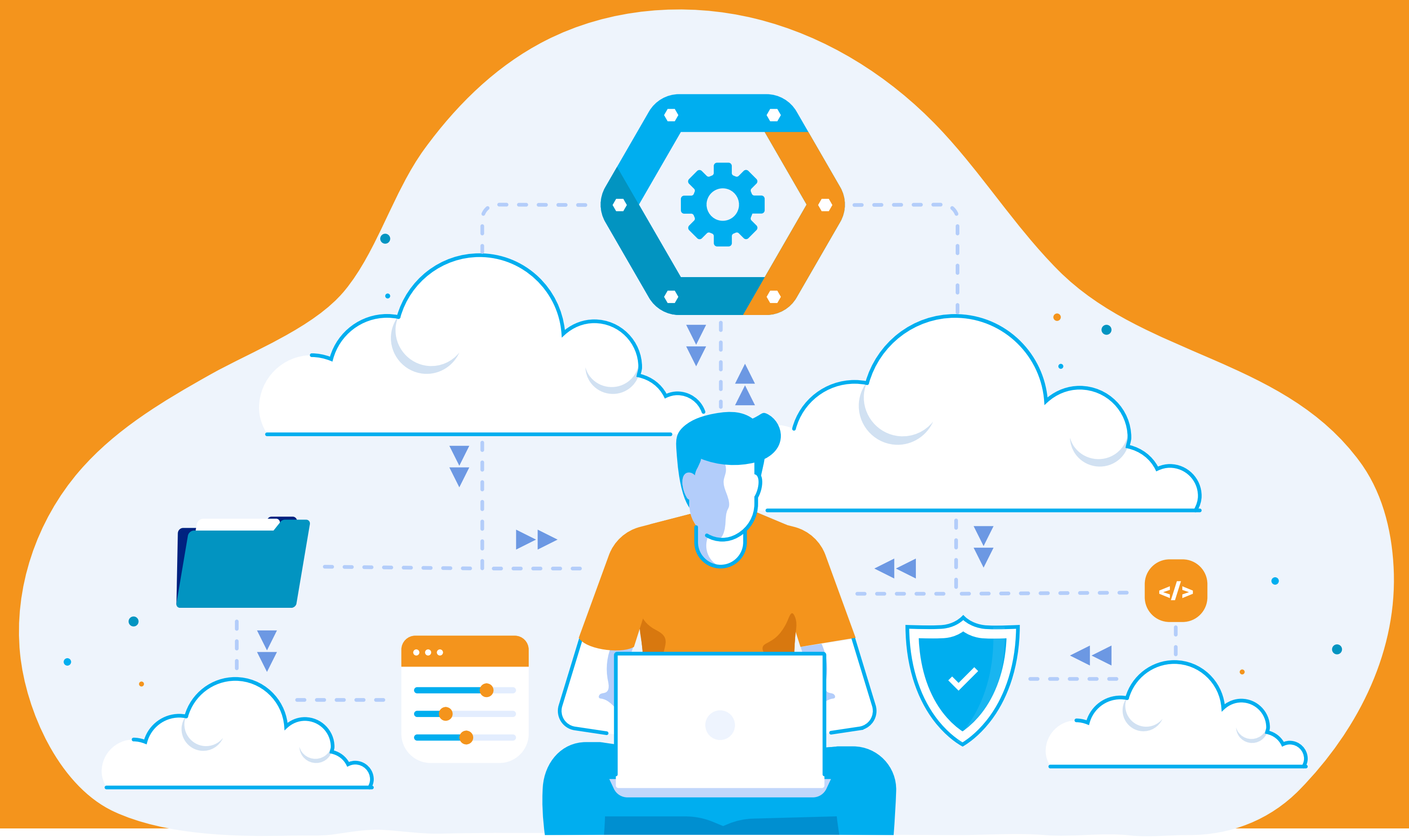
For more details, please reach out to us:

Email: clear@hanu.com

Call: +1 800 520 1816

Predictive Maintenance 4-week Jumpstart Program

For manufacturing, heavy engineering and pharmaceutical companies



Of Dollars Saved with
planned maintenance



Reduction in
Maintenance Costs



Improvement in
Workforce Efficiency



Reduction in
Unplanned Downtime

4-Week Jumpstart Program Includes

Week 1

- Assess data environment.
- Create high-level roadmap and system architecture.

Week 2 and 3

- Setup Azure Infrastructure for POC.
- Enable data ingestion.
- Train Machine Learning Models and test results.
- Validate results and build visualizations.

Week 4

- Conduct Workshop to educate team on implementation process, pain points and mitigation plan.
- Socialize POC results.
- Knowledge Transfer: Codes and all artifacts for next level references.

Final Deliverables

1. High level post migration architecture.
2. Migration estimates and budget.
3. POC code and all artifacts for reference.

🕒 **Duration:** 4 weeks 💰 **Cost:** \$20,000

About Hanu

- > 11+ years on Azure with more than 800 engagements
- > Microsoft Azure Expert Managed Service Provider and Cloud Solution Provider
- > Microsoft Gold Certified in Cloud Productivity, Data Analytics and Platform with Advanced Specializations in Modernization of Web Applications
- > Microsoft India Partner of the year 2021 for Azure Technology and Microsoft US Partner of the Year 2020 for Azure Data Estate Modernization
- > Recognized by reputed institutes like ISG and Gartner for Azure capabilities



Get started

For more details, please reach out to us:

Email: clear@hanu.com

Call: +1 800 520 1816