

# Power Platform Governance



# Our excellence

## Awards



### 2020 U.S. Partner of the Year

- Worldwide Customer Experience Partner of the Year
- Retail Partner of the Year Worldwide Finalist
- Solution Assessment Partner of the Year Worldwide Finalist
- U.S. Fastest Growing Surface Reseller
- U.S. Surface Transformation Reseller of the Year
- Surface IMPACT Award (Canada)
- National Large Solution Provider IMPACT Award (Canada)

2020

- Finalist – Customer Experience Worldwide Finalist
- Finalist – Education Worldwide Finalist
- U.S. Azure Application Innovation Partner of the Year
- U.S. Azure Partner Choice Award for Data/AI
- U.S. Fastest Growing Surface Reseller
- Hardware Partner of the Year Impact Award (Canada)
- Italy Co-Sell Partner of Year
- Singapore Modern Workplace Security Partner of the Year
- Singapore Compliance Partner of the Year

2019

## 18 Gold & Silver competencies

### Gold

- Application Development
- Cloud Platform
- Cloud Productivity
- Collaboration and Content
- Communications
- Data Analytics
- Data Platform
- Datacenter
- DevOps
- Enterprise Mobility Management
- Enterprise Resource Planning
- Messaging
- Project and Portfolio Management
- Security
- Small and Midmarket Cloud Solutions
- Windows and Devices
- Cloud Business Applications

### Silver

- Cloud Business Applications

## Advanced Specializations

- Windows Server and SQL Server Migration to Microsoft Azure
- Kubernetes on Microsoft Azure
- Data Warehouse Migration to Microsoft Azure
- Modernization of Web Applications to Microsoft Azure
- Adoption and Change Management for Modern Workplace

# Microsoft Power Platform



The **Power Platform** is Microsoft's low-code business application development platform which allows the typical non-technical worker to create, automate, and analyse data themselves without any coding knowledge.

Office 365 licenses includes the Power Platform workload (limited to O365 connections), which makes it very easy for your users to start building **quickly** with **minimal input** from IT.

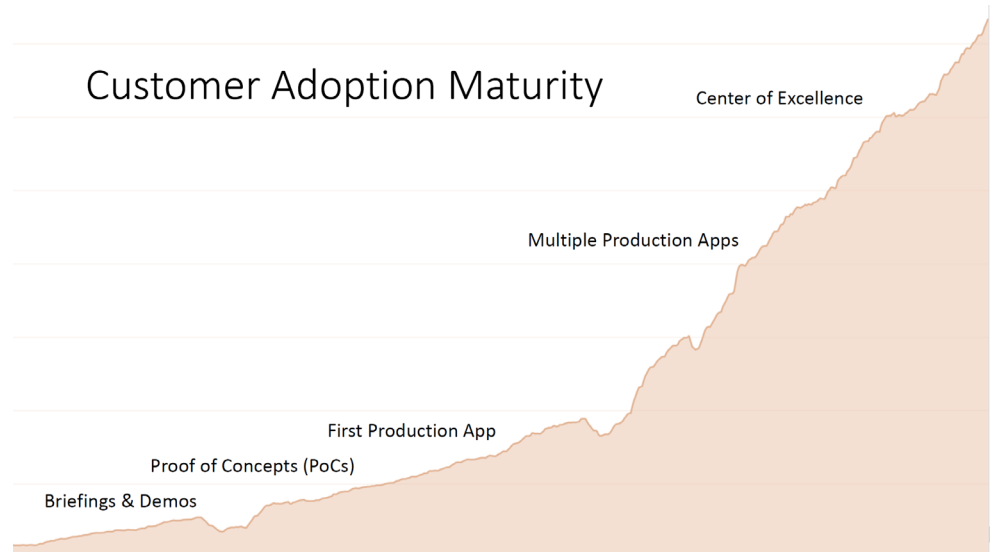
Dedicated Power Platform licenses provide even more capabilities allowing you to create powerful and scalable solutions using connectors.

# Microsoft Power Platform

With the Power Platform's low barrier to entry, and its ability to be used for either simple or complex apps or workflows, it is important to plan for a manageable deployment.

The Power Platform is there to empower your "citizen developers", but doing so in an un-managed way is a recipe for disaster.

Implementing the right governance and support model will ensure you are maximizing the benefits of the Power Platform.



# Power Platform – the good and the bad



- Power Platform allows you to quickly build apps or add automation.
- The “citizen developer” feels empowered to build their own apps with no assistance required from IT.
- Result is often an increase in user productivity.



- Apps are created and abandoned resulting in a big mess.
- No adherence to the right use of environments
- Apps may not be built on a good foundation or with recommended practices
- App design/performance may not be optimized
- App data architecture may not be scalable
- Apps may cause a security issue

# Insight Governance Approach



Applying governance is acknowledgement that while you may not have a problem today, you most certainly will have some in the future. The Insight approach involves a workshop to help you fully understand what governance is and how it will affect your users, followed by an implementation project to put the right governance program in place for your company. This combined with our CoPilot support program ensures you will stay on the right path and maximize your Power Platform investment.



# Governance Workshop



*An instructor-led workshop to give you an in-depth review of Power Platform governance.*

## **Agenda**

- Overview of Governance on the Power Platform
- Licensing requirements and options
- The Power Platform Admin Center
- Working and managing your environments
- Setting up a Center of Excellence
- Enabling and supporting your users
- Application Lifecycle Management
- Monitoring and Analyzing Usage

## Duration

- 1 Day

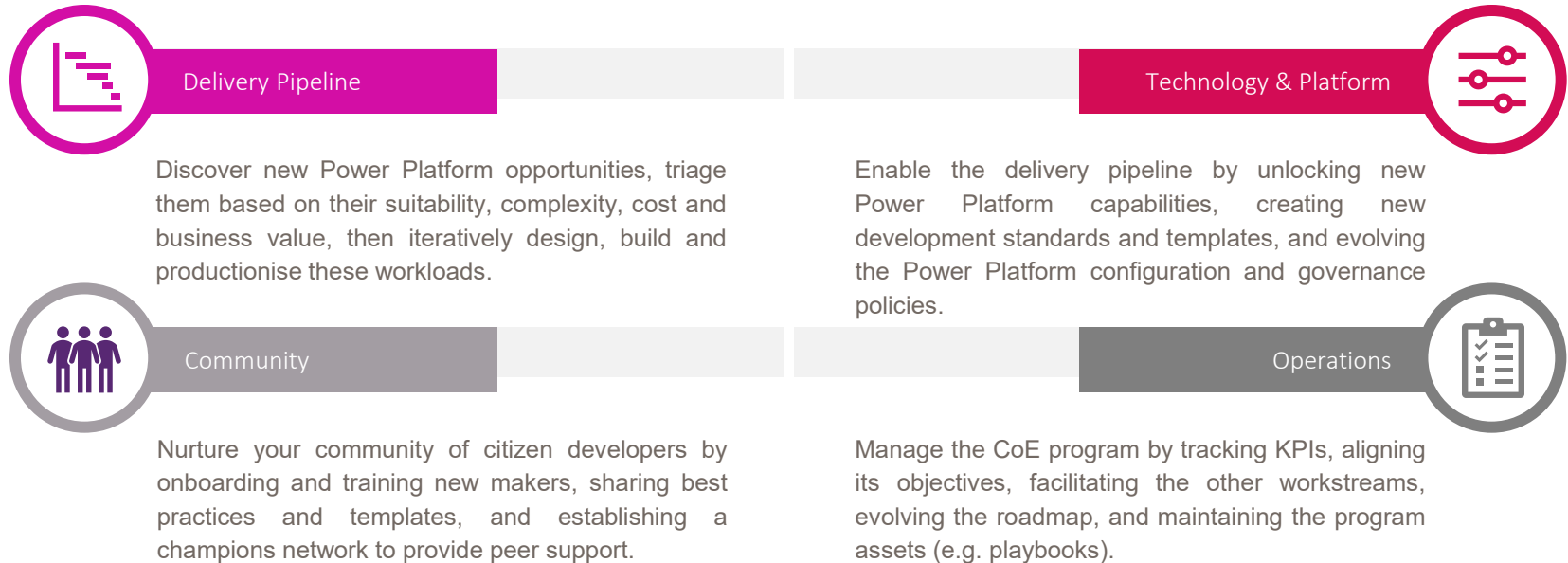
## **Deliverables**

- Course materials

Does not address model-driven apps, portals, Dataverse, chatbots, AI Builder or solutions.

# Governance Program Implementation

Insight's Power Platform Governance Program comprises **four distinct workstreams**, each having its own dedicated **objectives, team, tools and roadmap**:

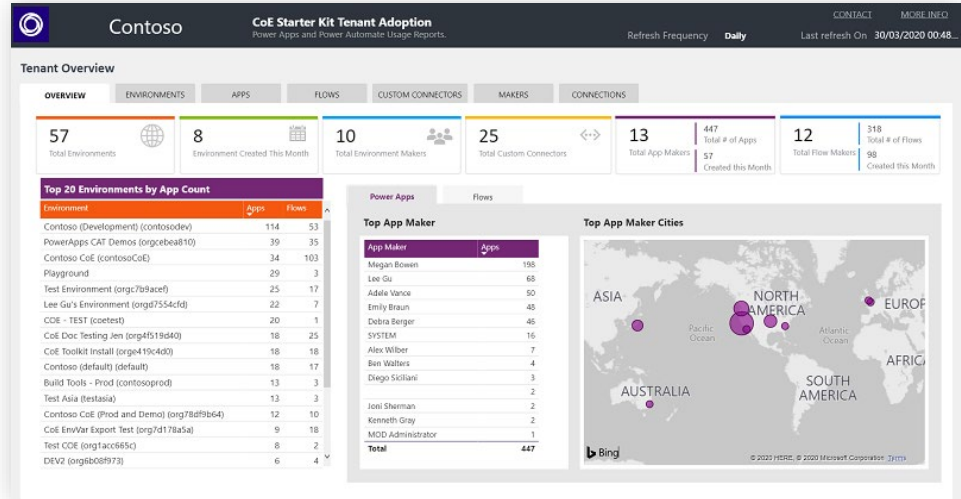




# Center of Excellence



Included as part of our engagement is the review (can be installed and configured also) of Microsoft's [Power Platform CoE Starter Kit](#): a collection of dashboards, apps, and other tools to help support Power Platform governance and adoption (with a focus on Power Apps and Power Automate).



# Governance Program Implementation Scope

## **Scope**

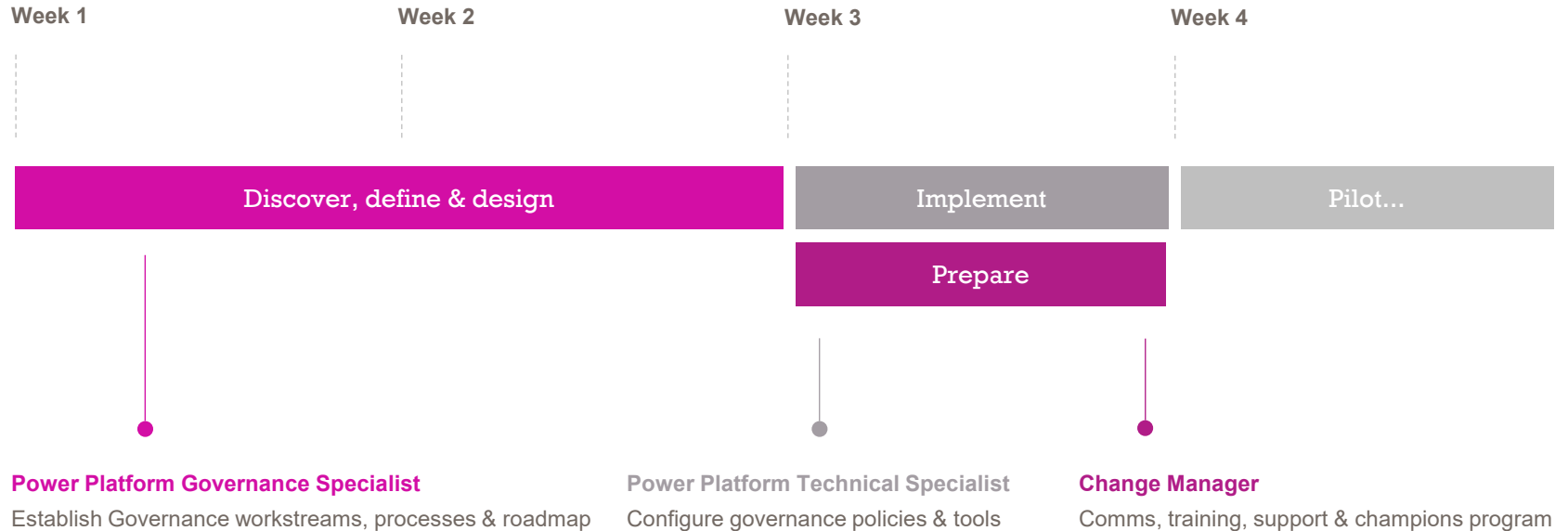
- Current Environment review
- Licensing Optimization
- Governance model definition
- Operational playbooks
- Teams setup
- Center of Excellence Overview
- Power Platform Configuration
- CoE Implementation and Configuration (optional)
- Delivery Pipeline
- Champions Program
- Change Management
- Power Platform Roadmap
- Support Program

## **Deliverables**

- Governance playbook and recommendations

# Delivery Schedule

In order to effectively establish the Power Platform CoE, Insight will provide a team comprising governance, technical, and change management specialists – each tasked with owning and driving different work streams.



# Estimated Costs

| Service & Deliverables   | Effort      | Model |
|--|-------------|-------|
| <b>Power Platform* Governance Workshop</b>   | 1 Day       | Fixed |
| <b>Power Platform* Program Implementation</b>  | 4 – 6 weeks | T&M   |
| CoE workstream implementation (roles, responsibilities & resourcing plan)            |             |       |
| CoE workstream playbooks (operational documentation)                                 |             |       |
| CoE Team setup (hub for all internal and external-facing CoE operations & artefacts) |             |       |
| CoE Starter Kit setup (Microsoft-provided apps & dashboards)                         |             |       |
| Power Platform delivery pipeline process (from opportunity to deployment)            |             |       |
| Best practice Power Platform configuration (environments, security, etc.)            |             |       |
| Best practice Power Platform ALM (continuous integration & deployment)               |             |       |
| Power App theme (custom and consistent branding for your organisation)               |             |       |
| Change management plan (communications, training & support)                          |             |       |
| Champions program (recruit, induct & empower power users)                            |             |       |
| CoE roadmap (evolution of operational maturity)                                      |             |       |

\*Does not include Microsoft Dynamics

# Additional Services



| Service & Deliverables  | Effort        | Model       |
|---|---------------|-------------|
| <b>Power Platform* CoPilot Program</b>  | 16+ hrs/month | Fixed price |
| CoE evolution workshop<br>CoE playbook refinement<br>Power Platform configuration optimisation<br>Power Platform adoption roadmap review<br>Power Platform Development assistance<br>Power Platform Architecture assistance |               |             |

\*Does not include Microsoft Dynamics

# Productivity Application Services



# Productivity Application Services

We offer accelerator programs and CoPilot — ongoing “white glove” support services — for all of the advanced workloads of Office 365.



SharePoint®



Teams



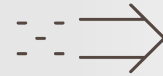
PowerApps®



Power BI®



Power Automate



## Accelerator programs

Get up and running with new Office 365 applications, without downtime or bottlenecks.



## CoPilot Services

Receive ongoing, high-touch services customized to your business needs and goals.

# CoPilot program

Get a dedicated consultant who will partner with you to address issues, plan for updates and strategize on growth and adoption.

## The program offers:



**Support infrastructure**  
including self-service and a centralized portal



**Backlog management**  
to ensure functionality and keep your IT teams focused on priorities



**Dedicated CoPilot**  
to help you tackle challenges and drive outcomes



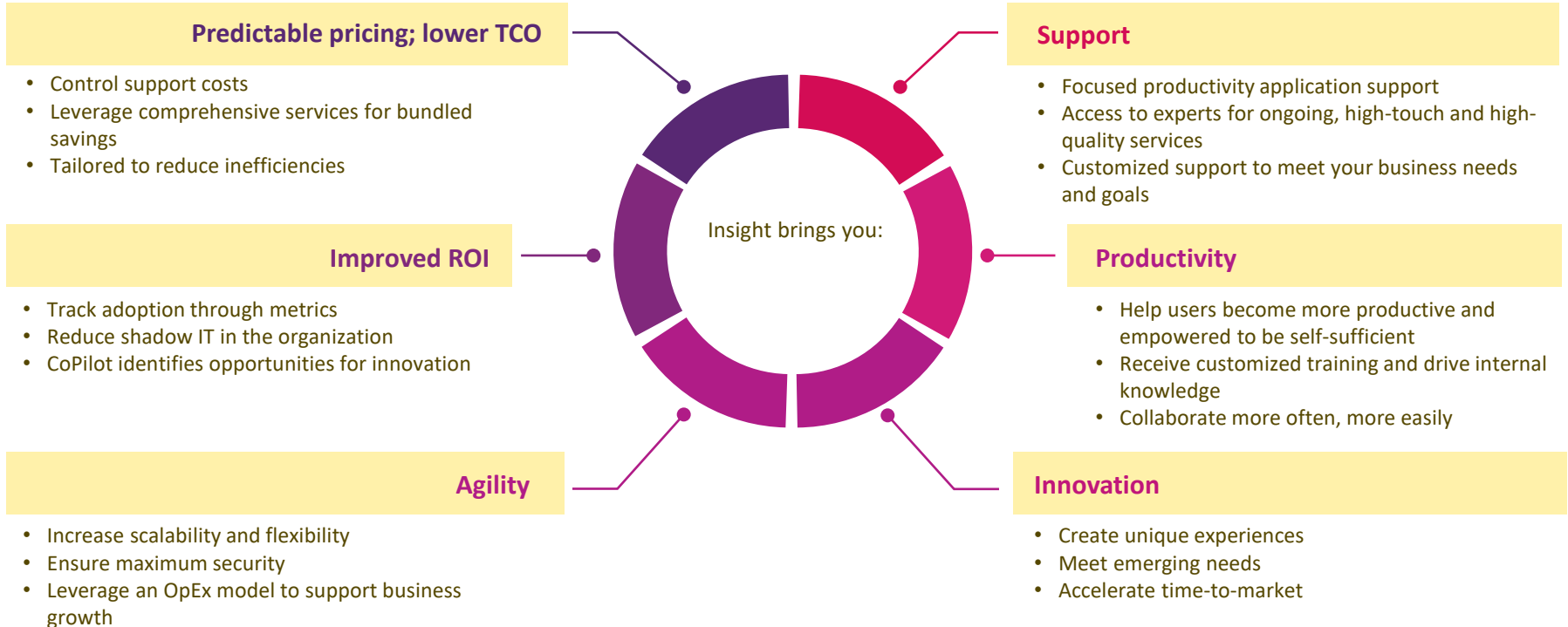
**Meetings and reports**  
to monitor program performance and maintain strategic alignment



**Access to Insight**  
developers, designers and architects



# Key benefits



# Insight Intranet Foundation



## The problem

Your intranet needs help. It is outdated or non-existent, and your team lacks bandwidth or skills to redesign, develop or support it.

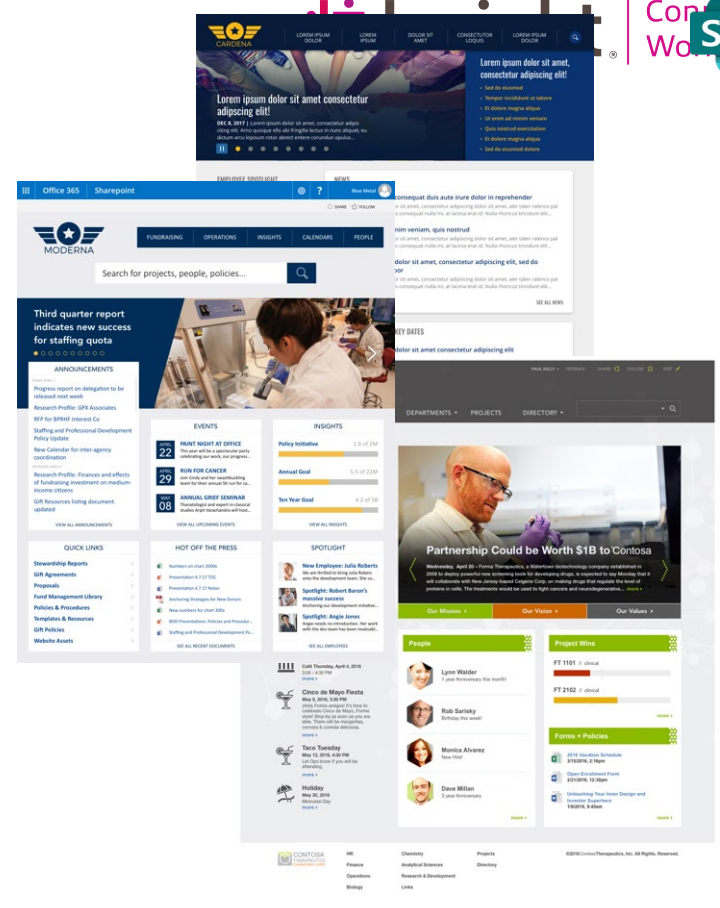


## Our solution

Intranet Foundation for SharePoint leverages our intranet framework (layouts, components and design) to quickly build/update your intranet. We provide all of the services and tools needed.

- Requirements gathering
- Design workshops
- Information architecture

Ongoing services can help you with content management, updates, adoption, etc.



# Accelerator for Business Process Automation

## The problem

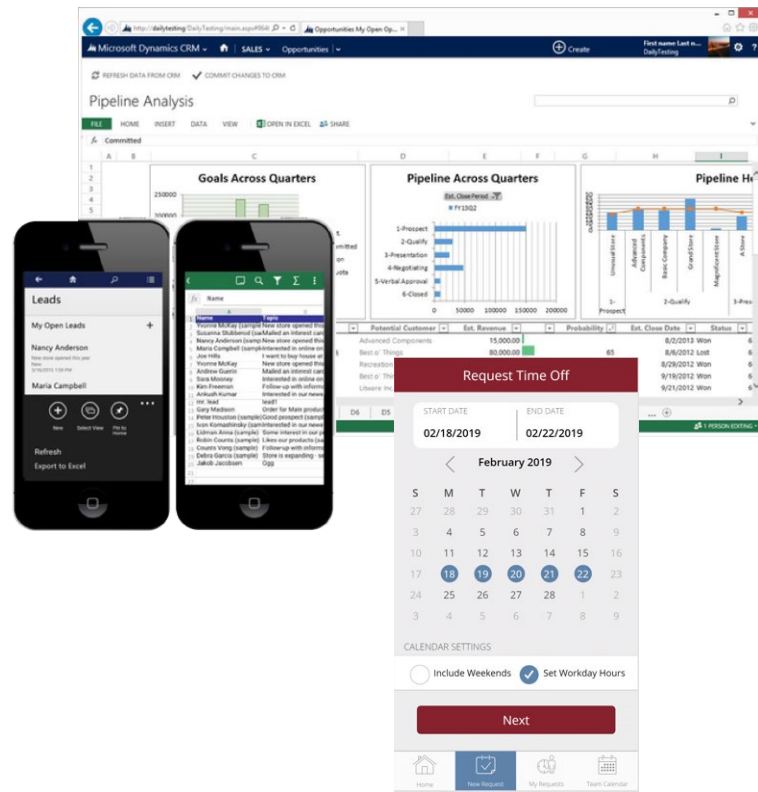
Your current processes are handled by inflexible custom applications with no workflow, or you have processes that are manual and need to be automated. You do not have the bandwidth or skills to build or maintain these applications, but you cannot afford not to.

## Our solution

Accelerator for PowerApps provides the services and expertise to quickly build and maintain your reports and apps and flows.

We start by developing a solid baseline understanding of your business application needs and help define your app experience. From there, we build out your app framework and initial set of apps.

Ongoing services help you build on this framework, continue app development and ensure regular maintenance is performed.



# Accelerator for Teams



## The problem

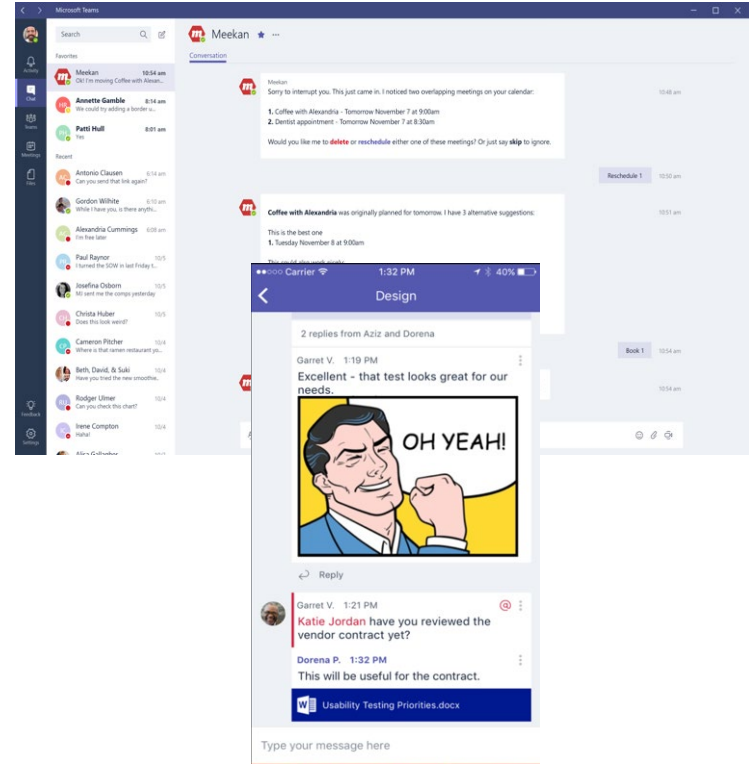
You are looking to deploy Teams or have begun to, but are looking for an experienced partner to help. Or, you have already deployed Teams, but need assistance maximizing the investment and driving adoption.

## Our solution

Accelerator for Teams provides end-to-end service to address governance, deployment, adoption and content management, as well as advanced activities through connectors and customization.

We begin by developing an understanding of your business needs and helping you to define your Teams experience. From there, we efficiently deploy Teams with governance and managed provisioning.

Ongoing services provide proactive support, maintenance, etc.



# Accelerator for Dashboarding



## The problem

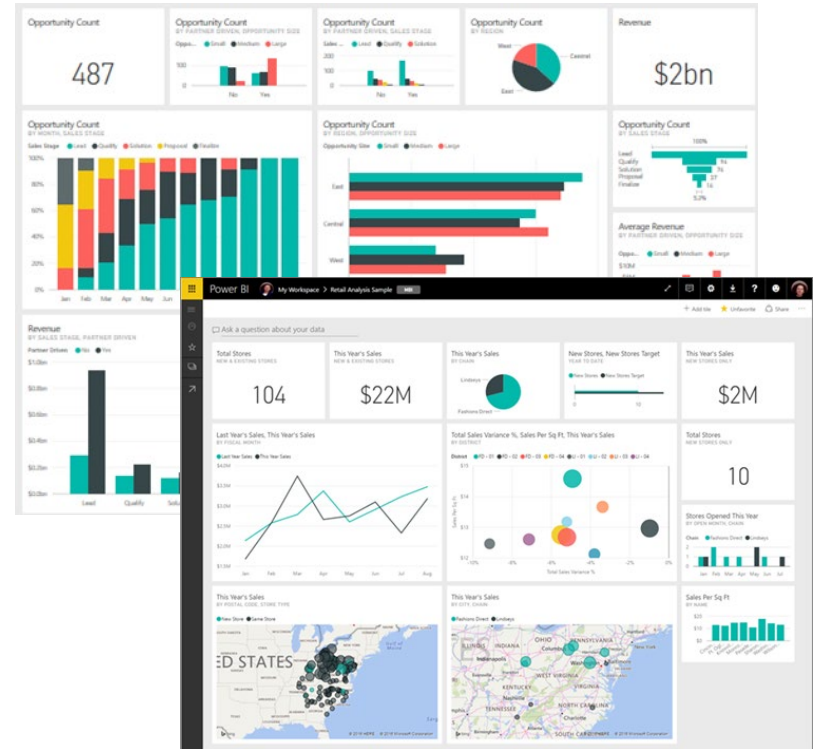
You want better visibility and business intelligence. However, you have a large amount of data and lack the bandwidth or skills to build and maintain visualization dashboards.

## Our solution

Accelerator for Power BI provides the services and expertise to quickly build and maintain your reports and dashboards.

We start by developing a solid understanding of your reporting needs and help define your dashboarding experience. From there, we build out your report/dashboard framework and initial set of reports/dashboards.

Ongoing services help you build on this framework, continue report development and ensure regular maintenance is performed.



# Insight at a glance

## DEEP PORTFOLIO & RELATIONSHIPS

3,500+

hardware, software and cloud partners

## GLOBAL REACH

Operations in  
**21 countries**  
serving clients around the globe

## ENGAGED WORKFORCE

11,000+  
Insight teammates worldwide

## BROAD EXPERTISE

8,000+ Client-facing teammates  
4,500+ Technical resources

## FINANCIAL STABILITY

\$7.7B  
Fiscal year 2019

## LONG LEGACY & KNOWLEDGE

Fortune 500  
company founded in  
**1988**

Thank You!