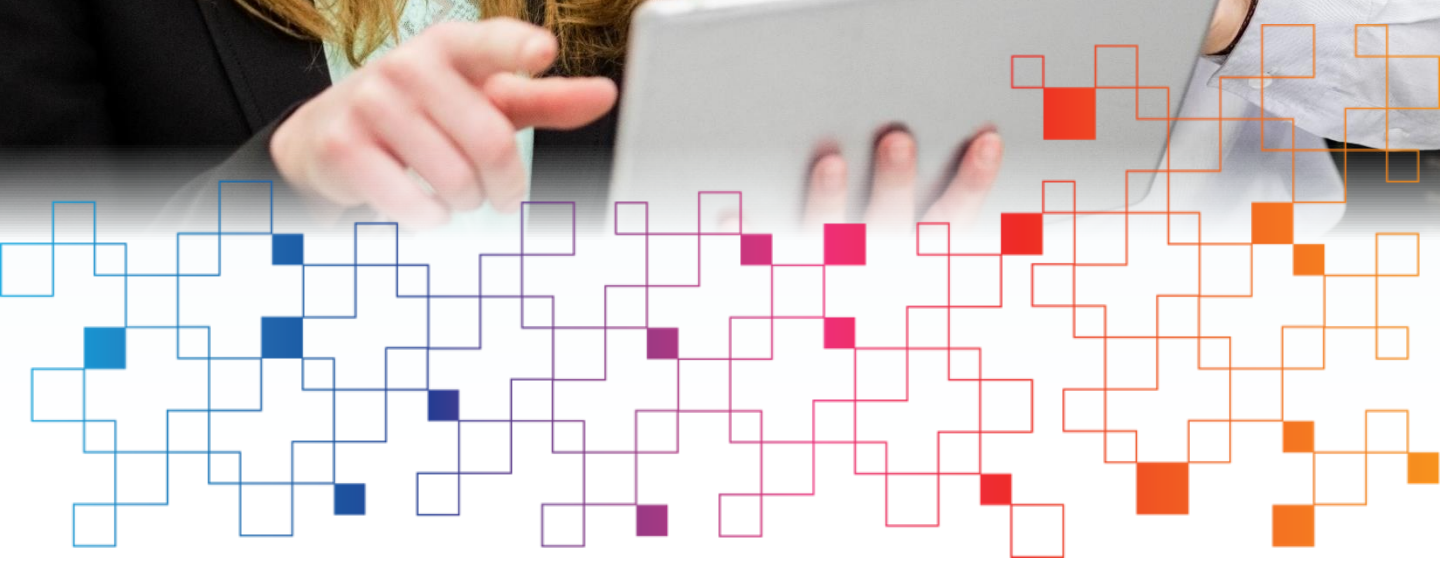


EDI Integration



intelligent
systems

Who is it for?



EDI Integration is a platform for exchanging sales and purchase documents. Created by the Intelligent Systems team, it is compliant with Dynamics 365 Business Central. The app helps companies to set up easily the necessary mappings allowing for effortless electronic data exchange.

The app is easily user-configurable, and it is based on exchanging XML files generated/read by Dynamics 365 BC.

It is a perfect tool for:

- All organizations that have massive document turnover and partners willing to utilize EDI
- All companies trading with large retail chains.

The application is built within Dynamics 365 Business Central.

EDI Integration is available on Microsoft AppSource.

How will you benefit from it?

Features

EDI Integration allows you to:

- Map any incoming or outgoing XML file structure to fields within BC
- Use customized functions to perform ETL operations during import/export
- Perform manual import file by file or schedule batch imports automatically
- Track detailed document logs and easily identify documents received from EDI (vs. Documents manually created in BC)
- Easily resolve mapping errors and troubleshoot potential problems

Get in touch with us to learn more about our EDI Integration app.

About us



Employing more than 200 people and reporting over 17 years of continuous growth, Intelligent Systems is an international consultancy company that delivers business software projects to local and multi-country organizations. A leading Microsoft Dynamics partner in Europe, the company has been part of the Inner Circle Partner Program – the highest recognition given to only 60 out of more than 10 000 Microsoft Dynamics Partners worldwide.

Intelligent Systems has carried out more than 500 implementation projects in over 55 countries for organizations running businesses in the areas of retail, wholesale, manufacturing, automotive, transportation and logistics, and more.

500
CUSTOMERS

**Global
knowledge**



55
COUNTRIES

18
YEARS

**Vertical
expertise**

30+
PARTNERS

200+
CERTIFIED
PROFESSIONALS

6
OFFICES

