



THE PROBLEM
ISN'T THE SOFTWARE.
IT'S HOW IT'S USED.

What is Apty and why is it the key to your digital adoption?

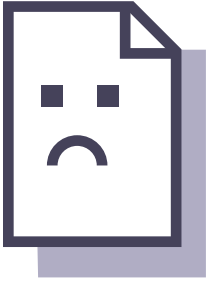
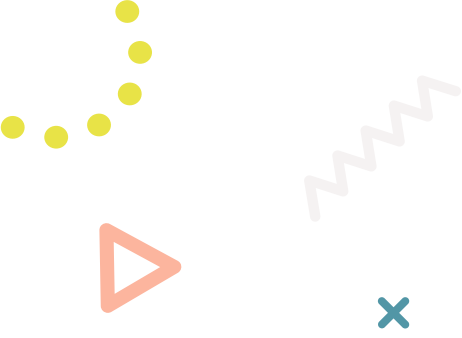
apty



DON'T TRASH THE APP

#DONTTRASHTHEAPP

apty



70% of All Digital Transformation Initiatives Fail.

Why? Whether it's limited IT resources, a staunch resistance to change, lack of alignment, or no ongoing support, the reasons are endless.

That's where Apty comes in. Apty is a Digital Adoption Platform (DAP for short) built to address these challenges head-on.

Achieve Enterprise Software Adoption at Scale.

You've invested a lot in your enterprise software from licensing to implementation and training, but you're still not seeing the ROI you expected.

We help you get more out of your software by making applications easier to use and improving your team's efficiency. Our tools help you identify the problems users have with software and solve these challenges through on-screen guidance or automation.

Shape your adoption strategy by focusing on process and productivity with Apty, the proactive digital adoption platform.

WE DELIVER MEANINGFUL VALUE:

80%

Savings in Software Support, Training & Maintenance Costs.

300%

Faster When It Comes To the Adoption of Any Software.

40%

Increase in Employee Performance and Productivity.

INTRODUCING:

The Apty Enterprise Transformation Platform

Apty's all-in-one platform is built to give you the tools to solve any digital adoption problem. From in-app guidance to business process compliance, we help you get the most out of your application investment.

The image displays the Apty Enterprise Transformation Platform interface. On the left is a dark sidebar with navigation options: ACME, Insights, Assist Usage, Dashboard, Workflows, Validations, Launchers, Tooltips, Announcements, Permalinks, User Onboarding, Content Search, Manage, Customization, and Publish. The main content area is titled 'Workflows' and includes three summary cards: 'Users' (414), 'Workflow Initiation' (436), and 'Workflow Completion' (119). Below these is a line chart for 'Workflow Initiation' showing data for Admin, Basic User, and Finance from August 21 to September 28, with a value of 53. A 'Workflows Overview' table lists various workflow steps with their completion rates and initiation dates. At the bottom, a 'Steps Overview' table shows step details for specific workflows. On the right, a chatbot interface for 'Apty Automation' is visible, with messages like 'Great! This is what I can do for you:' and 'Enter Opportunity Name', and buttons for 'Create Opportunity', 'ACME', '50000', and 'Submit'.

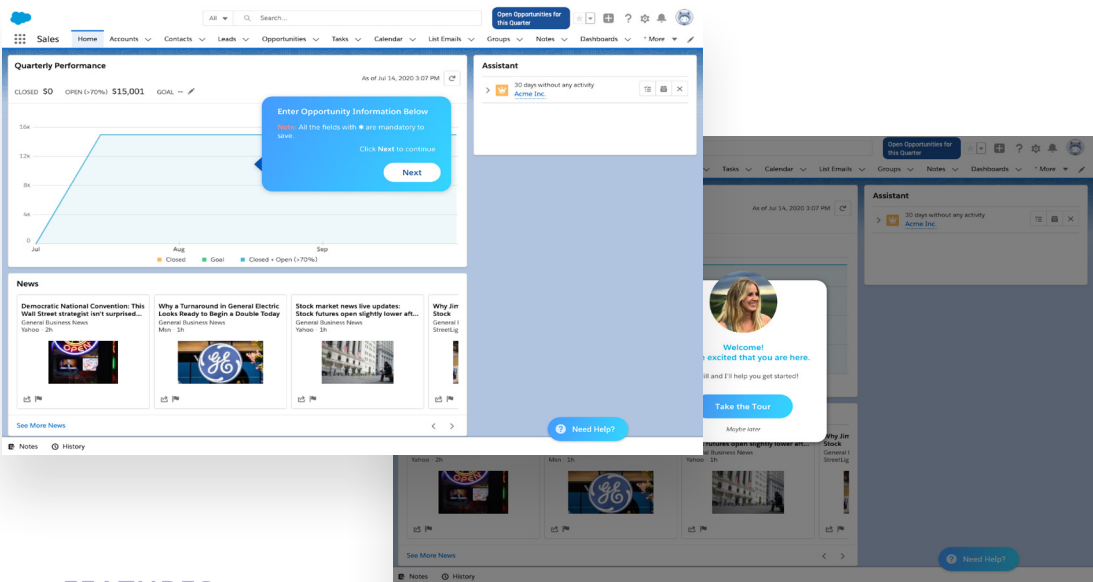
USERS	COMPLETION RATE
435	<div style="width: 80%;"></div>
371	<div style="width: 65%;"></div>
287	<div style="width: 45%;"></div>
258	<div style="width: 30%;"></div>
204	<div style="width: 15%;"></div>
176	<div style="width: 10%;"></div>
108	<div style="width: 5%;"></div>

LAST PUBLISHED	WORKFLOW NAME	COMPLETION RATE	INITIATIONS
	Add a Complexity Rating	72	08/10/2020
	Create a Subproject	60	08/10/2020
	Create a Status Report	5	08/10/2020
	Create an Advanced Report	81	08/10/2020
	Approve a Project	62	08/10/2020
	Add to My Projects widget	66	08/10/2020
	Add to PM Proxy	29	08/10/2020
	Add a Resource to an Investment	98	09/17/2020
	Add an Event Delivery Pipeline Template	2	08/10/2020
	Adding an Event (Delivery Pipeline)	58	08/10/2020

WORKFLOW NAME	STEP NUMBER	STEP NAME	DROP RATE
Create a Task and assign a user for the requested item.	1	Enter Filter Navigator	<div style="width: 80%;"></div>
Create a Service Request	1	Enter Filter Navigator	<div style="width: 60%;"></div>
Create a New Problem	1	Enter Filter Navigator	<div style="width: 40%;"></div>

Assist

Make complicated software simple with custom in-app and on-screen guidance. Give your employees the content they need, when they need it—without writing a single line of code.



FEATURES



Guided Workflows & Announcements

Turn even the most complicated tasks into a self-guided wizard. If anything changes, let your team know about updates with easily-customizable, time-dependent on-screen messages.

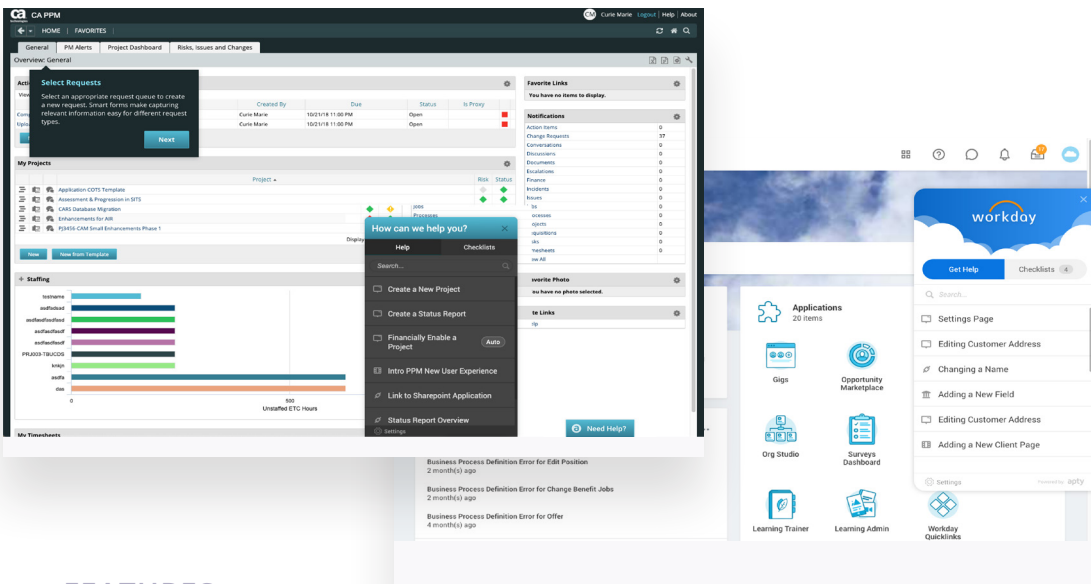


Enhanced Learning & Development Material

Apty enables you to customize your training by role, location, or other custom segments so your employees receive more relevant training as you roll out new technologies, and processes.

Align

Prioritize business goals by taking an active approach to process compliance. Deliver improved workforce productivity across departments, ensuring better software ROI.



FEATURES



Data Governance & Validations

Apty solves data quality issues by enforcing your company's business rules on one or more fields. Apty's validations prompt users to fix errors in real-time as they're working in your application.

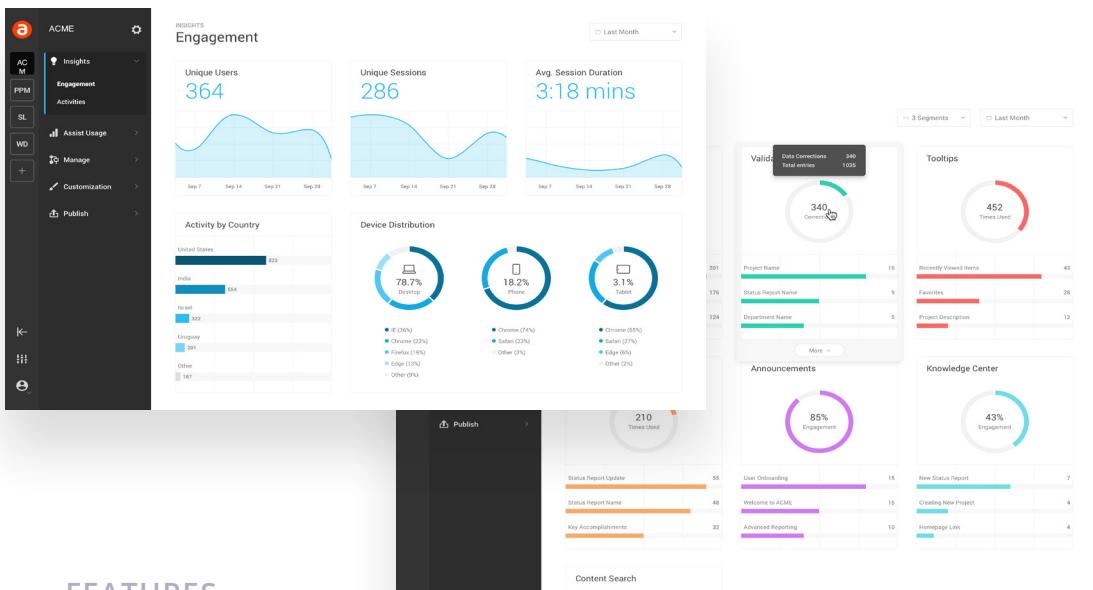


Instant Documentation

Update your process documentation with ease. After building or updating a workflow in Apty, you can export it as a PPT, PDF, webpage or SCORM object to use in your Learning Management System.

Adapt

Gain greater visibility into your transformation initiatives with robust tracking and analytics. Consistently improve your process through informed, data-driven decisions.



FEATURES



Powerful Analytics

See how users are interacting with your application and what their biggest hang ups are.

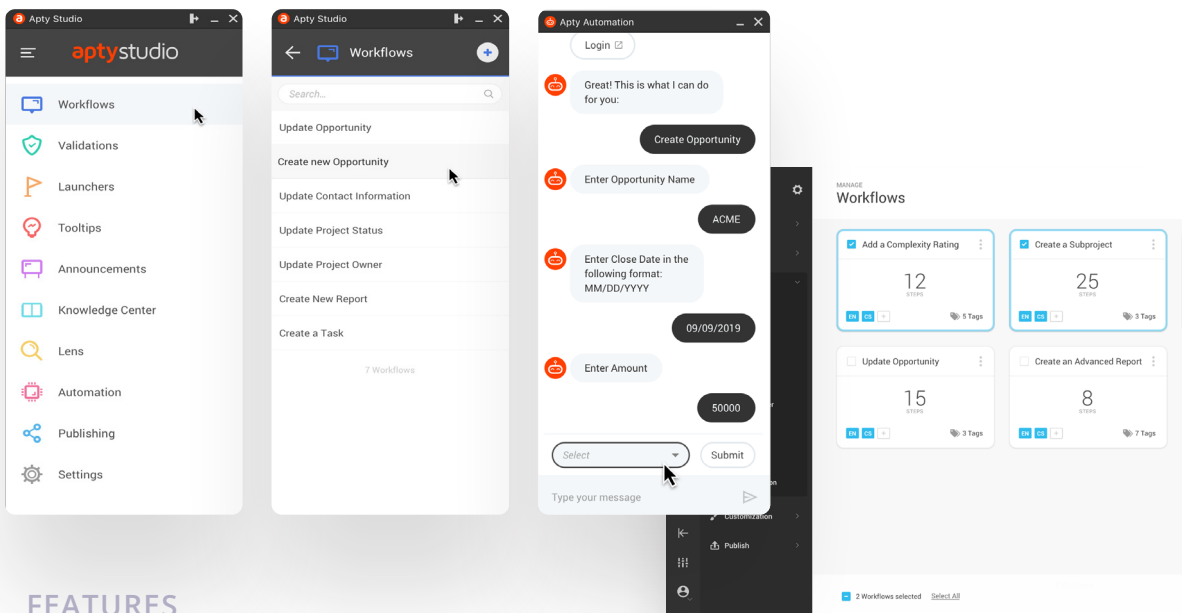


Code-Free Editor

Every element of Apty can be easily and quickly managed by you. Customize Apty to fit your unique needs—even when they continue to change as your business grows.

Accelerate

The platform is lightweight and flexible. And with robust automation features, you can scale your digital adoption strategies across your entire organization in days, not months (or years).



FEATURES



Easy Automation

Apty's easy-to-use interface allows companies of any size to add automation to enterprise software without investing the time or money on custom development.



Streamlined Communication

Communicate directly inside your business software to your team on any device in any time zone with customizable announcements and content.



INTEGRATIONS

Apty Works With What You Use.

Large companies typically work with around 130 applications organization-wide. Enterprise workers use 3-5 of those apps at any given time to complete a single business task. The enterprise application ecosystem is massive.

That's why Apty works with any web or mobile application and integrates with all the apps you currently use.



APTY IN ACTION



Apty helped a major U.S. airline solve their product adoption issues and improved employee productivity and satisfaction, resulting in:

80%

Reduction of
Support Tickets

70%

Decrease in
Training Time

800+

Work-Hours
Saved

3X

Increase in
Productivity

“It used to take 60 to 100 days for a project to get through the engineering and documentation process. Now, we’re down to 25. Apty increased our speed, quality and accuracy.”

PMO Manager



Ready To Take A Proactive Approach To Digital Adoption?

Get a personalized software demo from one of Apty's DAP experts. Or, if you're more of a hands-on learner, start your free trial today.

visit apty.io today

apty