



Identities Federation
for Education

- About Stellium
- Mission Context
- Federation Scenarios
- Methodology & Solution
- Assumptions
- Estimations & pricing



About Stellium



© 2022 by Stellium

This document is confidential and should not be copied or reproduced.



Founded in Switzerland in 2020, with the ambition of being a real differentiator in tailored IT Consulting, **Stellium** expanded quickly.

Our presence



In 2021, new offices opened in **Portugal**, bringing more capacity and flexibility to our offering, as well as competitive rates to the market.

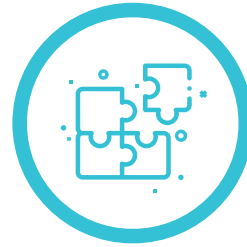
Our consultants support the organizations in their digitalization journey by **discovering, designing and implementing** innovative IT solutions and architectures.



Modern Workplace

We enhance the quality and effectiveness of your employees' work experience.

- Collaboration
- Communication
- Knowledge management
- Enterprise social



Business Apps

We connect your applications to automate your processes and accelerate your business.

- Low-code solutions
- Full stack development
- Solutions integration
- Apps modernization



Cloud Platform

We support you in creating and maintaining a secure and well governed cloud environment.

- Security
- Integration services
- Compute & network
- Data & AI

Microsoft Partner



- Gold Cloud Productivity
- Gold Cloud Platform
- Gold Data Platform
- Gold Windows and Devices
- Gold Application Development
- Silver Application Integration
- Silver Communications
- Silver Project and Portfolio Management
- Silver Collaboration and Content
- Silver Security
- Silver Data Analytics



Stellium is a **GOLD** Microsoft Partner in Switzerland, with strong competencies in the following technical areas.



Cloud Platform



Cloud Productivity



Application Development



Security



DevOps



Power Platform

A dark blue space background featuring a large, detailed planet with swirling clouds on the right side. Several smaller, spherical celestial bodies are scattered across the scene, some appearing as crescents or full spheres. The overall lighting is dim, with a subtle glow from the large planet.

Mission Context



© 2022 by Stellium

This document is confidential and should not be copied or reproduced.

Until recently, the Swiss federation had been providing accounts and mailboxes to all the people in the education area in Switzerland through a service called *educanet* and *educa.ID*. These services had been up since 2004 and had more than 680'000 members (including students, teachers and people in the education sector).

In 2020, Educa (the entity responsible for providing such services) announced that both these services would be decommissioned in the beginning of 2021, and from then, each state would have to implement their own services to continue providing identities and mailboxes to users (<https://www.educa.ch/fr/news/2021/educanet2-et-educaid-sont-hors-ligne>).

Educa also announced a new service Edulog (<https://www.edulog.ch/fr>). Edulog is a federation system that creates an abstraction between a user's identity and the account provided to him (by the state he belongs to). This means that if a student changes state, his/her account in Edulog remains the same, although the identity provider (IdP), and information concerning the user, changes.

Stellium proposes to implement a federation between your existing system(s) and Edulog to allow your identity system and your staff and student's accounts to be compliant and working with Edulog.

This proposal is combined of two parts:

- 1. Environment Assessment:** execution of identified methodology to assess, evaluate and document the action plan
- 2. Federation Implementation:** execution of the action plan to federate your environment with Edulog



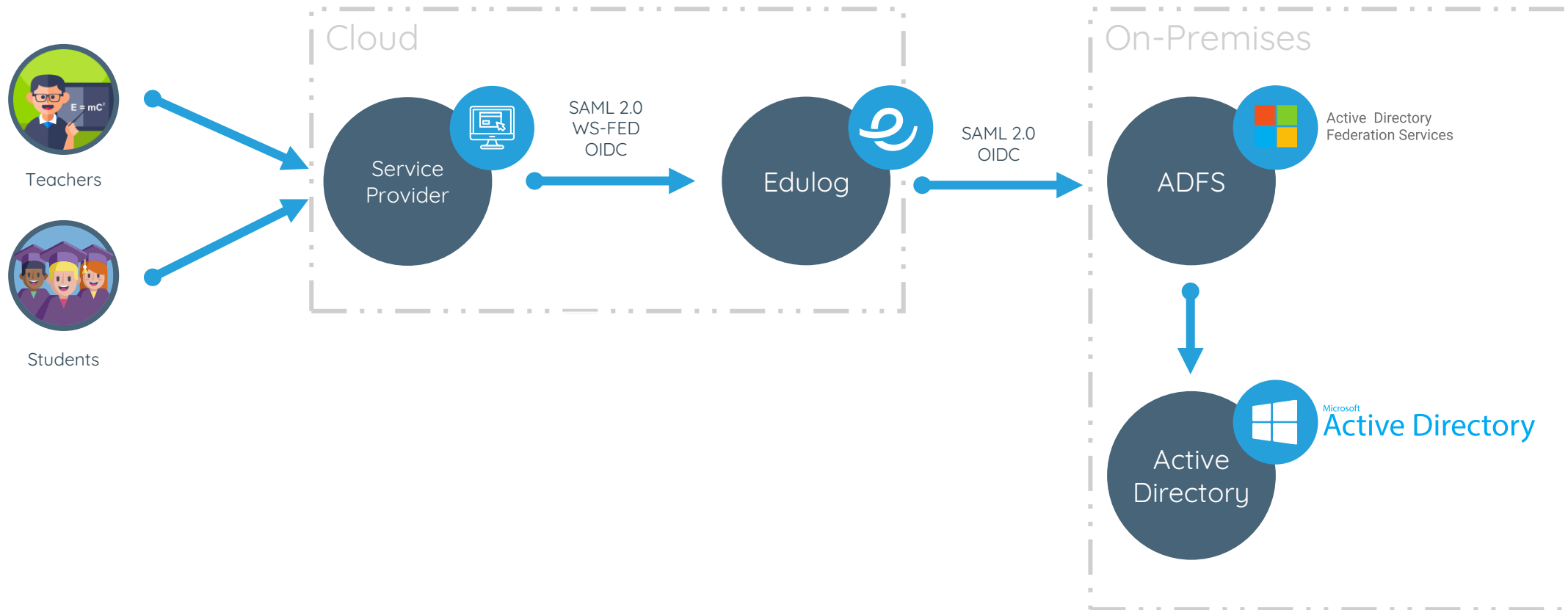
Federation Scenarios



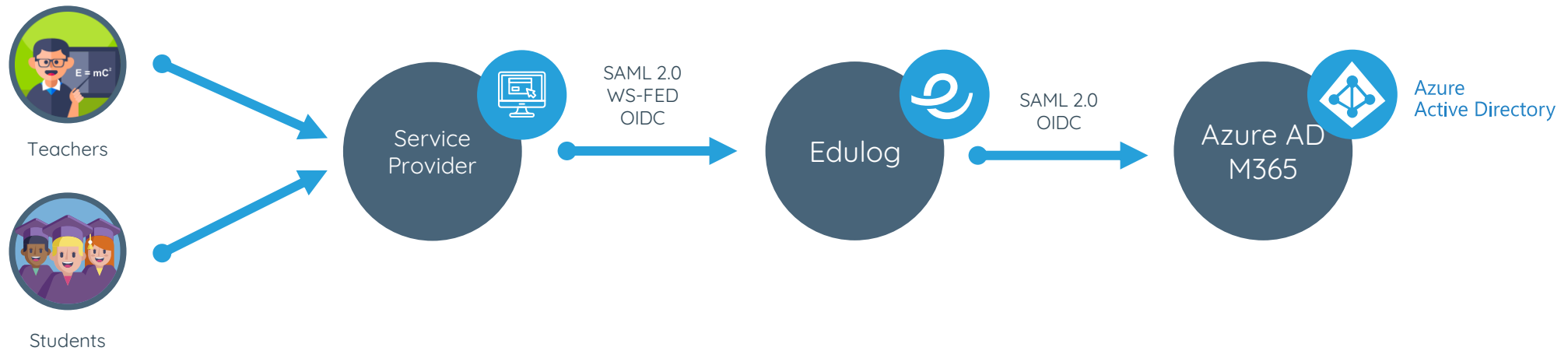
© 2022 by Stellium

This document is confidential and should not be copied or reproduced.

Federation with Edulog On-Premises



Federation with Edulog Cloud



A photograph of a space shuttle launch, heavily tinted with a blue color. The shuttle is ascending vertically, leaving a large, billowing plume of white smoke and fire. The launch pad structure is visible on the left, and a tall water tower with the word "SPACE" on its tank is on the right. The sky is a clear, dark blue.

Methodology & Solution



© 2022 by Stellium

This document is confidential and should not be copied or reproduced.

Environment Assessment



- Audit of existing environment
- Identification of existing service providers
- Initial system configuration (DNS / Rules / Security / ...)

Setup



- Setup and/or configuration of new systems (ADFS, Azure)
- Disclosure to Edulog for relying party registration
- Internal communication campaign

Authentication



- Authentication strategy and architecture
- Authentication rules (2FA)
- Claims rules definitions according to Edulog specs

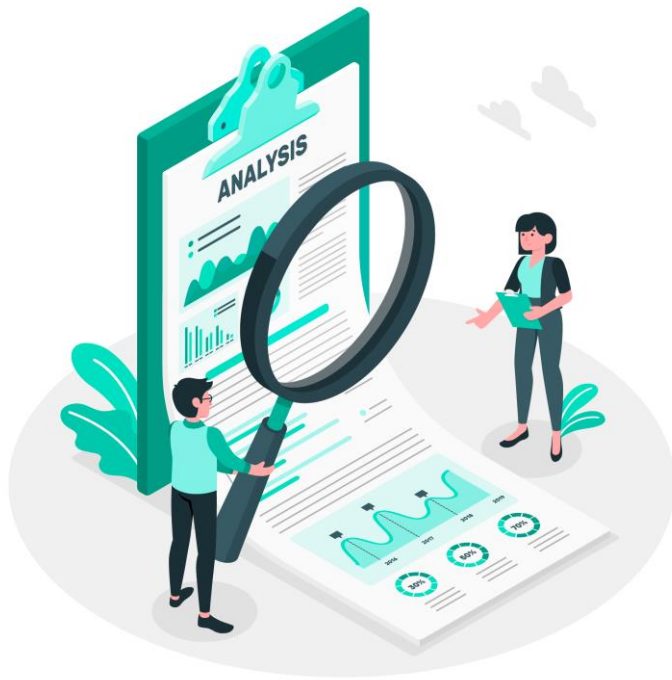
User Management



- Automated scripts for recurrent administrative tasks
- Privileged access for scripts execution and monitoring
- Training workshop for system administrators



During the **Environment Assessment** stage, we will assess, evaluate and document the action plan that will contain all the different technical and functional related activities to successfully federate your existing systems with Edulog and therefore become part of this modern architecture.



- Assess existing identity systems;
- Assess existing authentication systems;
- Document information compliance policies;
- Service providers inventory;
- Subscriptions / licenses planning;
- Light governance model definition;
- Branding requirements;
- Identification and purchase of required solutions;



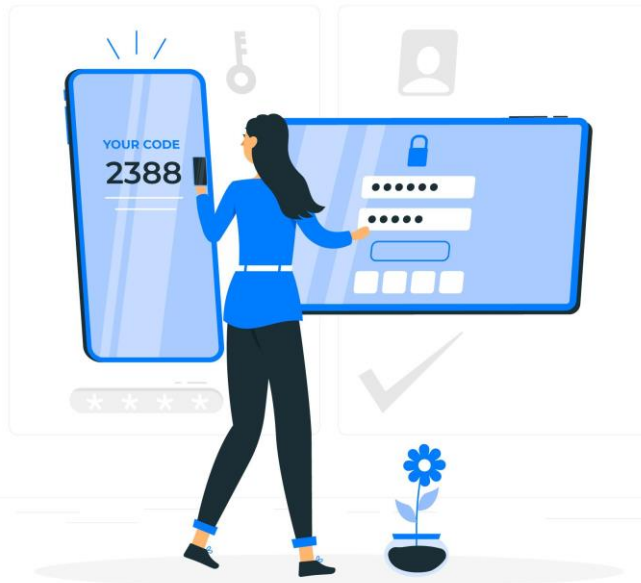
During the **Setup** stage, we will ensure that any required solution is put in place to support the federation requirements. During this stage we will also start the formal registration process with Edulog, both for the identified service providers (relying parties) as well as for the identity provider.



- Installation of required products and solutions;
- Configuration of ADFS / Azure;
- Configuration of service providers;
- Registration with Edulog;
- Internal communication campaign;
- Training material for students and staff;



During the **Authentication** stage, we will setup the different mappings between the user's information residing in your organization's internal systems and Edulog's federation. We will also implement and configure any security level required by your organization to ensure your security compliancy level.



- Authentication strategy definition;
- Authentication rules implementation (2FA);
- Information mapping implementation under Edulog specification;
- Configuration of information exchange per role (student and teacher - minor and adult);
- Recovery of federation metadata from Edulog;
- Federation setup between Edulog and ADFS / Azure;
- Federation setup between identified service providers and Edulog;



During the **User Management** stage, we will ensure that the most typical and recurrent tasks for user management are either automated or made simple for your organization's IT department. These tasks can synchronize information between your HR system and your users' directory as well as automatically federating users with Edulog once their account is created.



- Integration between the HR system and the users' directory;
- Creation of automated scripts for recurrent administrative tasks;
 - Setting extended properties' values for Edulog federation;
 - Federating a new user with Edulog;
 - Unfederating a user that left the users' directory;
- Privileged access for scripts execution and monitoring;
- Training workshops for system administrators;

Assumptions



© 2022 by Stellium

This document is confidential and should not be copied or reproduced.

Assumptions

Ref	Assumption Description
A01	This proposal assumes the existing (or targeted) usage of either ADFS or Azure for federation requirements with Edulog. If another system is already used (or envisioned) for your organization, we will require a re-assessment of the workload and potential revised estimations.
A02	IT administrators in the organization will be required at a 60% rate throughout the execution of the project to ensure the estimations that are proposed in this offer.




Estimations & Pricing



© 2022 by Stellium

This document is confidential and should not be copied or reproduced.

Estimation and pricing

Workloads	Duration (MDs)	Cost 
Environment Assessment	4	5'760 CHF
Setup	5	7'200 CHF
Authentication	3	4'320 CHF
User Management	5	7'200 CHF
Preparation and coordination	3	4'320 CHF
Total	20	28'800 CHF

 Prices are VAT exclusive

Let's  Go?

If you have any question regarding this proposal:

tiago.duarte@stellium.consulting

+41 (0) 76 518 68 73

www.stellium.consulting



© 2022 by Stellium

This document is confidential and should not be copied or reproduced.