

# RiverMeadow DR Platform Capability: Cost Effective, Quick & Easy to Deploy



## Overview:

Lift, Optimize and Protect your workloads through one single pane of glass with RiverMeadow's market-leading Multi-Cloud Migration and Disaster Recovery (DR) Platform capability.

Our new DR Platform capability is purpose-built for customers who are looking to protect their VMware vSphere workloads that run on-premise or in Azure VMware Solution (AVS), including the use of Azure Blob Object Storage. It is a highly cost-effective, quick and easy to deploy solution that makes DR more affordable by allowing customers the ability to protect not only mission critical workloads but *any* workload whilst leveraging Azure Blob as a low-cost storage option.

## Common Use Cases:

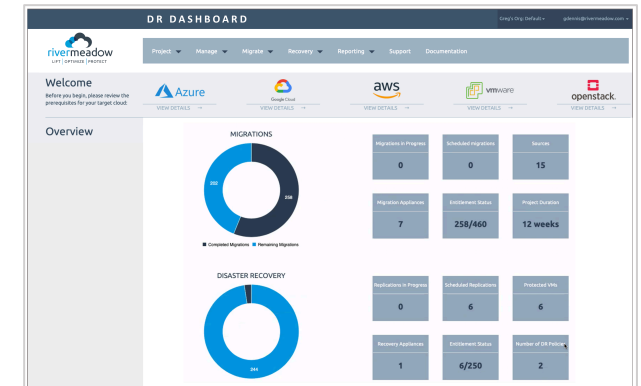
Our DR Platform capability supports the following common use cases:

| Source Environment    | Target DR Site  |
|-----------------------|---|
| VMware Private Cloud  | Azure VMware Solution                                   |
| VMware Private Cloud  | NetApp CVS  |
| VMware Private Cloud  | Azure Blob Object Storage                               |
| Azure VMware Solution | Azure VMware Solution                                   |
| Azure VMware Solution | NetApp CVS  |
| Azure VMware Solution | Azure Blob Object Storage                               |
| Azure VMware Solution | VMware Private Cloud (Native vSAN, Azure iSCSI Volumes) |

[Watch our NEW DR Demo Here >>](#)

## Key Benefits:

- **Quick and Easy Deployment:** Setup and deployment are simple and fast, with no need for a dedicated Disaster Recovery site
- **Optimal Business Continuity:** Our new Platform capability is designed for asynchronous replication with orchestration workflows that are optimized to achieve predetermined Recovery Point Objectives (RPOs) and Recovery Time Objectives (RTOs)
- **Low-cost Storage Option:** Azure Blob provides a low-cost option as the target for replication data
- **Flexibility of Recovery:** RiverMeadow offers customers ultimate flexibility during recovery to address several use case needs. Workloads can be recovered to the Source or Target vSphere environment based on the selected Recovery Point:
  - *Recover one or many VMs* based within a Recovery Policy based on specified date and time of the Recovery Point (customer chooses RPO and number of Recovery Points to retain)
  - *Recover one or many VMs* where the original VM is overwritten (helpful in cases of ransomware or corruption) or recovery can be re-directed to a new VM (customer chooses new VM name and placement options) to recover beside an existing VM, based on desired/available Recovery Point
  - *Recover one or many VMs* to different vSphere environments (helpful in cases where the primary vSphere site is no longer available / accessible)



Set up & manage all backup & recovery operations through our easy-to-use, self-service dashboard

**RiverMeadow offers 1, 2 & 3 year subscriptions - Pricing available upon request**

[FREE 14 Day Trial Here >>](#)