

KEY CAPABILITIES

- Automated and on-demand backups
- Quick and easy data restore and recover with granular search options, including historical snapshots
- Advanced administrative tools and control
- Complete data and status monitoring
- Internationally recognized compliance and security

KEY BENEFITS

- Minimizes the risk of data loss in the cloud
- Assures 100% safe and reliable access to your data
- Meets audit requirements for backup and recovery with flexibility to select backup times and choice of AWS datacenter locations in the US, Canada, EU, or Australia
- Easy to use with simple, intuitive, non-technical interface to easily activate backups, restore, or export data
- Simple activation of backups to offload IT work by empowering any user to easily protect content and restore lost data



CloudAlly uses Amazon AWS S3 storage

CloudAlly’s cloud-to-cloud backup solution for the complete Microsoft cloud suite—Office 365 Exchange Online, SharePoint Online, and OneDrive—provides a simple, automated, and secure backup of all your critical Microsoft business data.

You’ll be able to leave your worries about lost or corrupt data behind and instead, focus on managing your business, while knowing your data is 100% safe and can be recovered with just a few clicks.

Maintain Data Control and Work Productivity

In pursuit of better collaboration and storage capabilities, your company has made the move to Microsoft Office 365, and while this is a powerful cloud-based suite of tools, that doesn’t mean your data is secure.

It is your responsibility to protect your corporate data when using the Microsoft cloud. Business best practice guidelines require automated backup and recovery but, unfortunately, many companies don’t take the necessary steps to protect themselves from accidental or malicious data destruction.

1 in 3 companies report losing SaaS data, and of those companies, 64% admit to losing data due to user error.

If you don’t backup your Microsoft cloud data, your business could be at risk of massive exposure for the simple reason that Microsoft does not provide the ability to recover data that has been accidentally or maliciously deleted or corrupted. The recycle bin is fine for short-term and item-level recovery, but doesn’t provide the ability to perform a point-in-time recovery of lost or corrupt data.

As data storage services, SharePoint and OneDrive are not only prone to sync errors, and accidental or malicious data loss, they’re also at risk from malware and ransomware such as CryptoLocker.

That’s why having a secure backup with CloudAlly is so vital. It allows you to access your data when you need it most, no matter what.

Data Protection and Recovery for the Microsoft Cloud

CloudAlly offers the most reliable and trusted Microsoft Office 365 backup and recovery solution for your IT team. It ensures that all historical versions of your Office 365, SharePoint, and OneDrive data — including all emails, calendars, contacts, tasks, and sties — are safely stored and easily recoverable. And our Outlook compatible .pst export means that your Office data is still available even if MS Azure is temporarily unavailable.

It’s effortless.

CloudAlly provides accurate data restoration from any point in time and at any hierarchical level. Administrators can perform a non-destructive restore, or export data with a single click, reducing the risk of lost productivity and meeting even the fastest recovery time objectives.

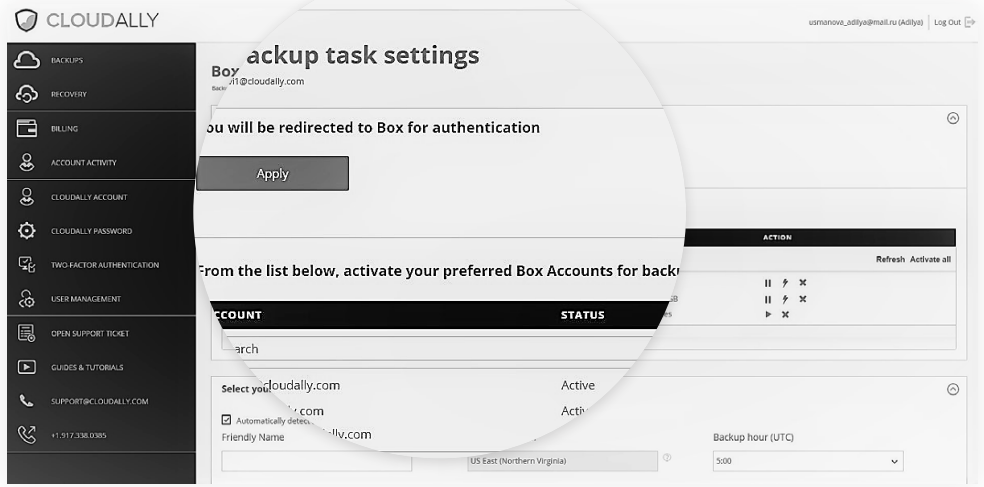
With CloudAlly cloud-to-cloud backup for Office 365, you have full administrative control of your data. And don’t worry about running out of storage; customers receive unlimited storage and archive retention, so you can be confident that your data can be recovered from any point in time.

Automated and On-demand Backups

CloudAlly performs automated daily backups—using Amazon S3 secure storage—of all Office 365, SharePoint, OneDrive, and OneNote data. And for additional protection, you can make on-demand backups as needed throughout the day.

- **Automated Daily Backups:** Automatically backup all or selected users as well as multiple domains with an auto-detect function for new users/sites.

- **Selective Backups:** Choose specific email accounts, calendars, contacts, tasks, sites and/or sub-sites to include or exclude from your backups.
- **Metadata Backups:** Backup and restore your data to its full, original state.
- **Pause Backups:** CloudAlly's pause function allows you to archive backups when off-boarding employees, keeping the data available for export or restore to another user.
- **Single Repository Backups:** Store your Office365, OneDrive, SharePoint, and OneNote data in a single repository alongside all your other corporate SaaS data including Box, G Suite, and Salesforce.



Data Restore and Recovery

CloudAlly makes it easy to quickly locate and restore lost data with advanced search and recovery capabilities. And once you've found your lost data, perform a non-destructive restore in a sub-folder or site with a single click. SharePoint and OneDrive have the added option to perform an in-place restore overwriting the live data and eliminating the need to move restored data between sites. You can also export data in industry standard formats (.eml, .vcf, etc) or Outlook compatible .pst.

- **Point-in-time Restores:** Access historical snapshots or versions of all Office 365 users as well as OneDrive and SharePoint sites, and restore to any previous known state with 100% accuracy.
- **Search and Filter:** Use our powerful granular search to quickly locate and recover individual items.
- **Quick Data Navigation:** Browse backups by date snapshot—in chronological sequence—and then drill down through the snapshot to restore or export data at any hierarchical level.
- **Non-Destructive Restore:** With a single click, perform a non-destructive restore that places the backup data on the original site or to another preferred site.
- **Whole Account Export:** All of our backups offer the ability to export your data—using zip download—for onsite storage in original format.

Complete Transparency

CloudAlly's Office 365 backup service simplifies your data protection process with full visibility.

- **Activity Log:** All activities including login, backups, restores, etc., are logged and available on your CloudAlly account activity screen.
- **Daily Backup Summary:** You can receive an optional daily backup email summary including a .csv attachment with details of each backup task.

- Client selected backup location in AWS US, Canada, EU, or Australia data-centers
- ISO 27001 certified, GDPR and HIPAA compliant
- Optional OAuth and Two-Factor Authentication
- 99.9% Uptime / Availability SLA.

Compliance and Security You Can Trust

Trust and transparency are critical to your cloud-to-cloud backup service. We know how critical data protection is to your business, so we've made it our top priority to provide a trustworthy product and service that is reliable, accurate, and transparent. Giving you meaningful insight into your data. Everything we do is focused on giving you piece of mind.

CloudAlly's Office 365 backup is certified, and fully compliant, with internationally recognized accreditation for information security.

- Unlimited storage and unlimited retention of daily backups
- Non-destructive restores to protect your live data
- Optional auto-detect and backup of new sites for easy on-boarding
- Archive backups when off-boarding while still eliminating the Office 365 license
- Secure Amazon S3 storage with AES-256 bit encryption



ABOUT CLOUDALLY

Founded in 2011 as one of the world's first cloud-to-cloud backup services for G Suite Google Apps and Salesforce, CloudAlly led the industry with the first commercially available Microsoft Office 365 cloud backup in 2014. ISO 27001 certified, GDPR and HIPAA compliant, CloudAlly adheres to industry standard best practices for information security management. CloudAlly is privately held and has customers and partners in over 40 countries.

CloudAlly is certified Microsoft Platform Ready and available on the Office 365 Marketplace.

LEARN MORE AT [CLOUDALLY.COM](https://cloudally.com)
+1.917.338.0385 SUPPORT 24/7