

End-to-End Supply Chain Visibility Platform

UST Omni™ provides end to end supply chain visibility during every stage of your supply chain at a granular SKU level. Allowing you to be more demand and market driven, improve your service levels by leveraging technology to make existing data actionable in real time and make your supply chain more responsive to market dynamics. The platform becomes your single digital source of truth, allowing bi-directional data flow to your enterprise systems and eco-system of trading partners - providing visibility from Purchase Order Control to Delivery Receipt and all milestones in between.

Benefits include:

- Increase supply chain efficiency
- Reduce out of stock incidents
- Improve working capital and revenue

All with the end goal of improving the customer experience.



Integrated visibility of international, Intermodal and OTR



All under one single sign-on SaaS platform



Geo-Political AI Driven disruption/risk alerting at SKU level

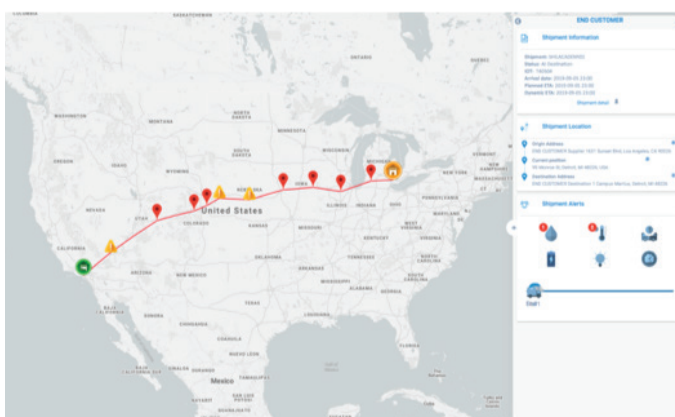
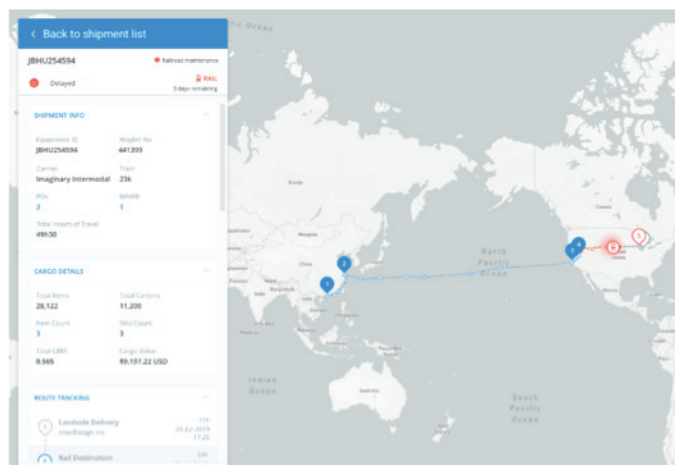


IoT-based realtime alerts to product integrity issues

UST Omni enables clients to develop and deliver products to their consumers with dynamic intelligence. Using the platform, FMCG & CPG companies, Retailers, Manufacturers and Logistics Providers can digitize their end-to-end businesses operations, supplier base and logistics networks onto a single platform that provides clear and concise data management.

A web-based portal gives all users a single version of the truth as well as ability to track & trace in real time. The elegant UI enables reaction to real time data events; red flag exception events for late shipments and product integrity issues (through IoT sensors), enable collaborative planning and rebalancing of inventory to keep your product on shelves and in the customer's hands.

UST Omni – cognitive solution leveraging cloud, big data and IoT to provide true supply chain global visibility while enabling responsive orchestration and risk analytics through a digital experience and real time API integration.



Features

- In-Country and International Trade Route Ready
- Realtime shipment monitoring via end to end IoT device managed service
- Dynamic ETA analysis allowing for better receipt planning
- Real-time exception management and notification that places focus on at-risk shipments
- Agile, cloud-based scalable platform
- API connections to any system
- Out of the box data integrations to ensure productivity
- Ever growing ecosystem of data partners for scheduling and tracking shipments

Business Benefits

- 27%** Reduction in lead time from product concept to store
- 8%** Reduction in operational costs
- 10%** Increase in revenue through OTIF improvement
- 12%** Increase in revenue through OTIF improvement
- 10%** Reduction in administrative labor costs
- 23%** Improvement in forecast accuracy

✉ For more information email us at omni@ust-global.com

ust-global.com



USTGlobal



USTGlobal



ustglobalweb



company/ust-global