

Human Centric Innovation

# Driving a Trusted Future

Fujitsu Microsoft Windows  
Virtual Desktop (WVD) PoV

FUJITSU

shaping tomorrow with you

# Forces are shaping the new reality

Some of the important findings are ...

"A business cannot wait for the transformation it knows it needs."

"The meaning of the word essential."

"Leadership and values matter always, but especially in a crisis."

"Working from home works."

FORTUNE CIO SURVEY

"Resilience is the key to survival. Organizational, transactional, and Cultural Resilience"

"Forget what you know about our strategy, this will need to be re-written"

We need to increase our level of adaptability."

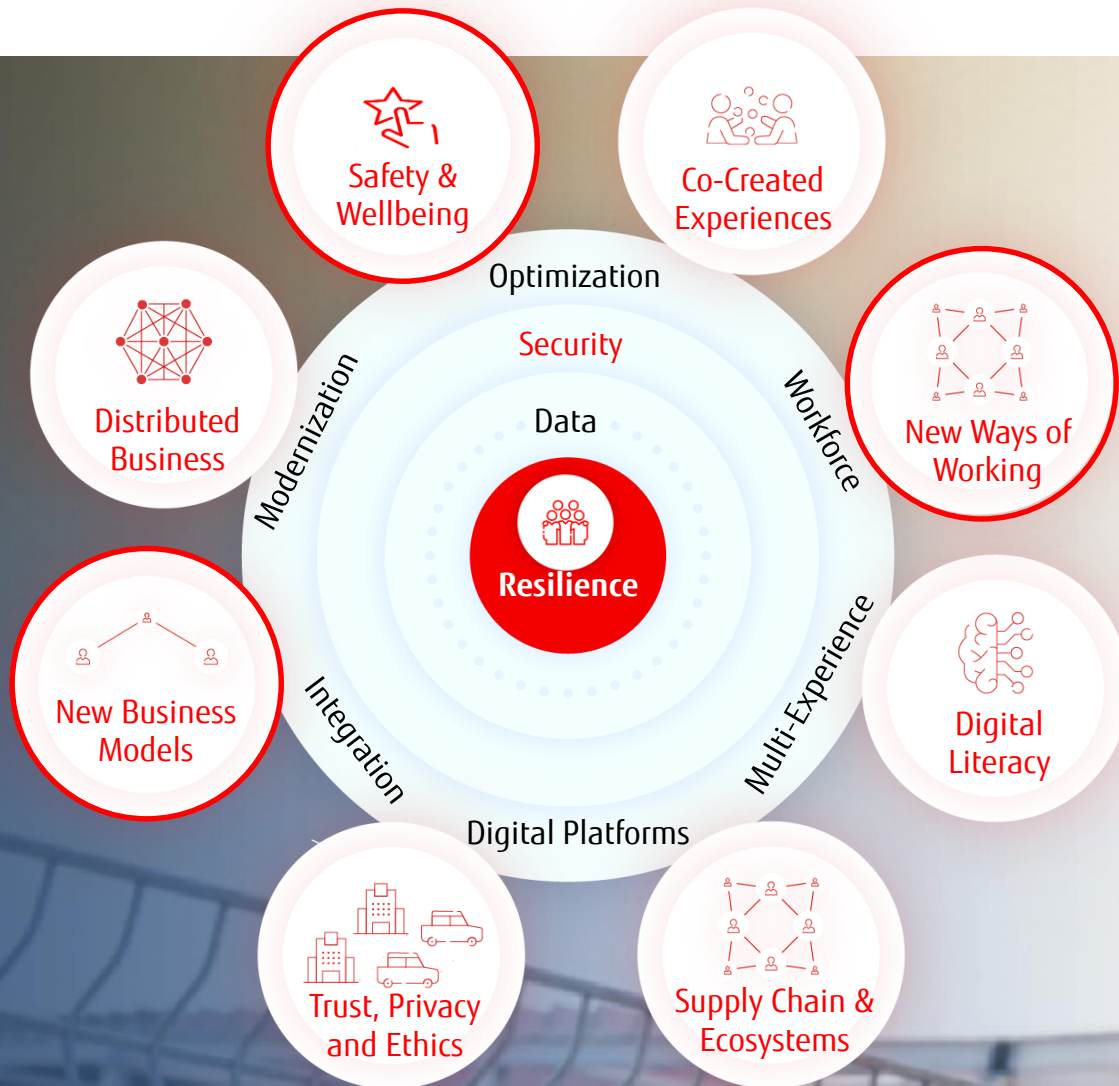
FUJITSU CIO FORUM

Market forces are challenging stability, security, agility, affordability and employee satisfaction. Building Resilience will ultimately affect a companies' ability to recover and thrive post COVID





# The answer lies in the ability to adapt & bring the right solutions together at pace ...



# ... and by empowering your People



## Flexible working

- Your data remains **protected** as analytics monitors your security posture, controlling access in real-time
- Your workforce is **engaged and focused on your customers** through a continuously monitored experience with automated proactive fix
- Your people are **empowered & able to work everywhere** with the tools and devices that get work done and increases right first time activities
- They are **agile & innovate at pace** as connected teams fluidly collaborate seamlessly
- A **step change in productivity** through everyday AI augmentation which prioritizes the important & automates the mundane.

## Evolve the current Hybrid Workforce Solution to an Adaptive Workplace environment

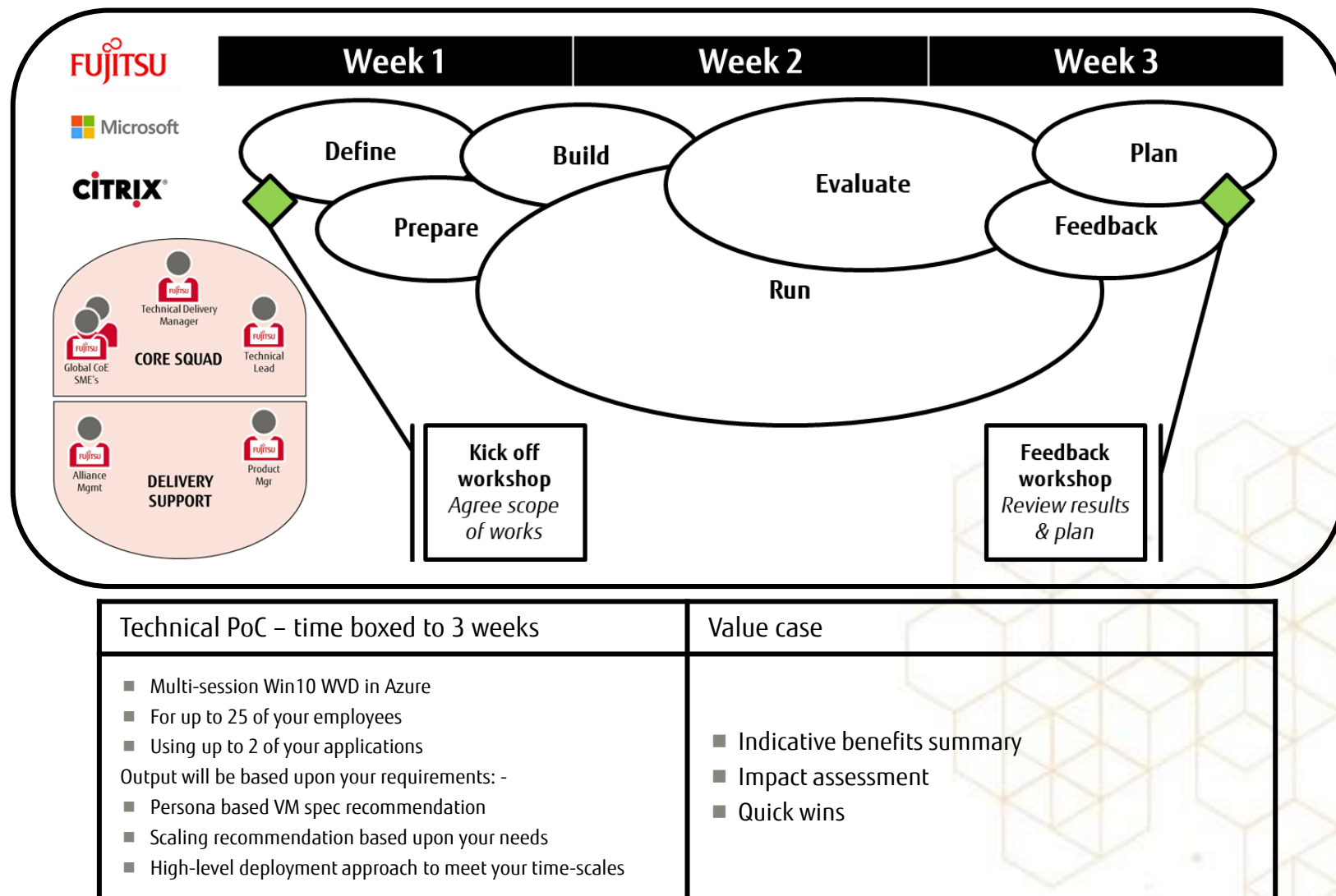
- ✓ Embracing new ways of working, while ensuring your workforce remains connected and engaged
- ✓ Driving and enhancing productivity through this new operating model, while increasing resilience
- ✓ Enhancing your ability to manage cash flow and meet increased market uncertainty
- ✓ Providing greater access to talent, increasing business agility and competitiveness

# Fujitsu Windows Virtual Desktop Proof of Value



## How will we deliver it?

- An agile approach – we will gather your requirements and engineer the PoC around those
- Conducted remotely, using Fujitsu demo lab
- We will involve our Global Centre of Excellence from one of three locations: Poland, India or Russia
- We will need input from one of your technical resources during week 1 and we'll iteratively feedback updates during weeks 2 & 3
- We will complete our assessment activity with a feedback workshop to review our findings with you
- Our pre-sales team will continue to work with you post review to plan next steps





## We're in this together

As the market leading provider of Workplace Solutions in EMEA (Gartner MQ, IDC and Citrix Global Partner of the year 2020) Fujitsu have stood shoulder to shoulder with our customers to help them implement their emergency COVID-19 Hybrid Workforce Solutions.

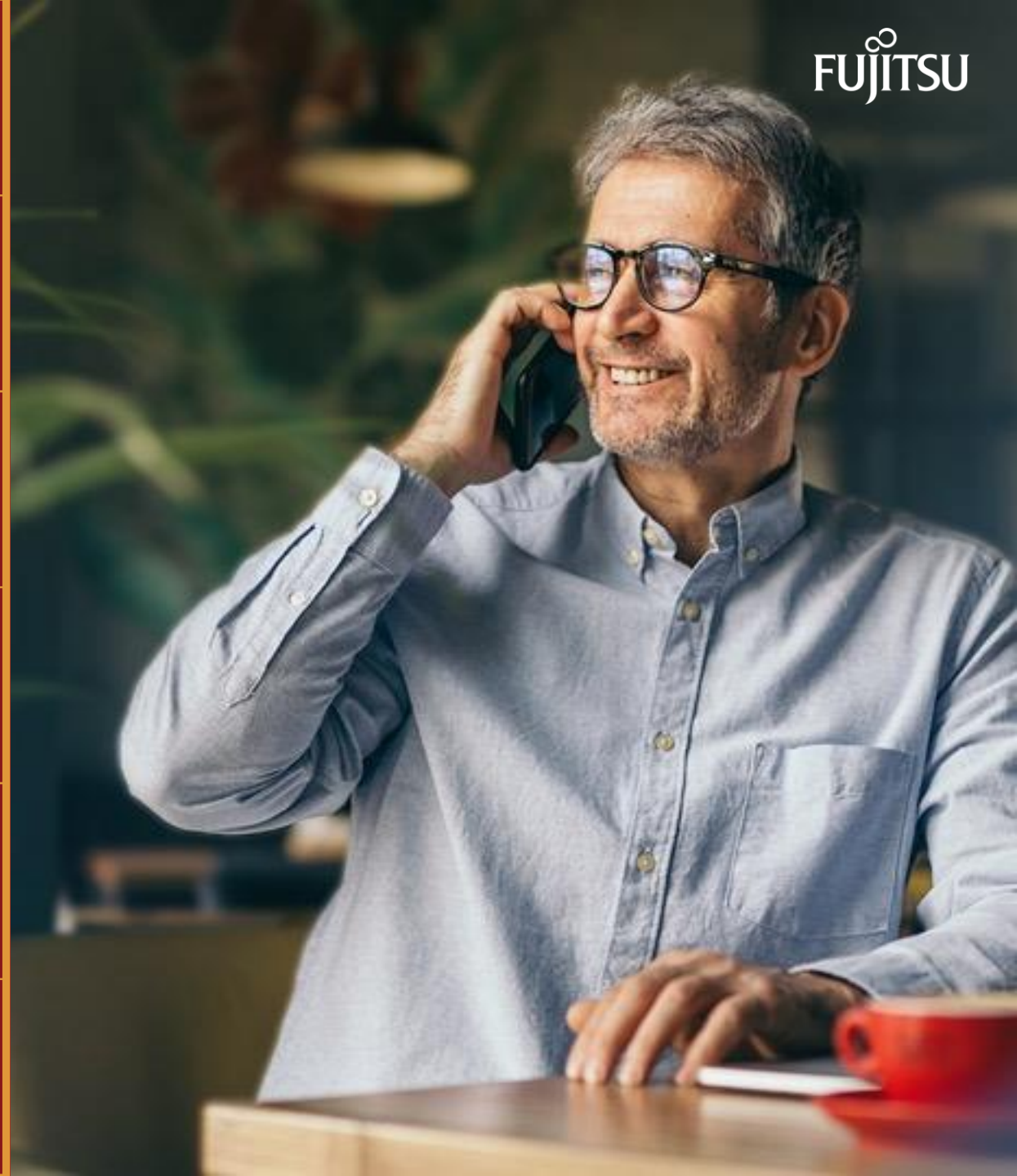
## You don't have to take each step alone

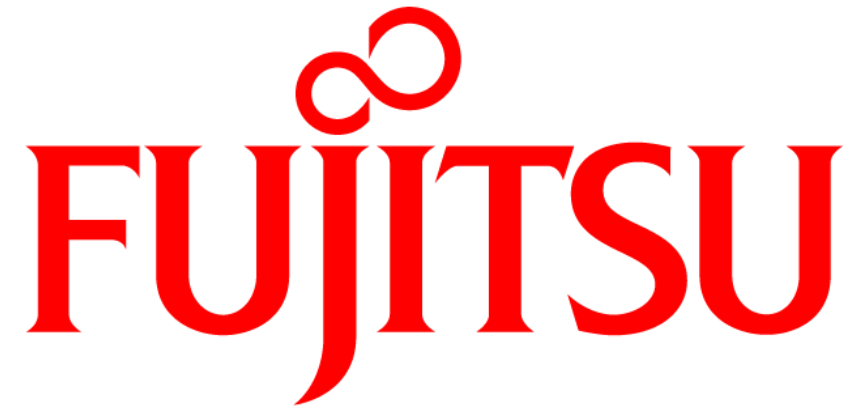
We provide Virtual Workspaces to over 500,000 workers across EMEA, including large, complex, and high profile global organizations – such as NatWest Group, British American Tobacco and Centrica.

If you want to know more about Fujitsu and our solutions, please check our website and feel free to contact us.

[www.fujitsu.com](http://www.fujitsu.com)

[askfujitsu@uk.fujitsu.com](mailto:askfujitsu@uk.fujitsu.com) or (+44) 01235 79 7711





shaping tomorrow with you