



# IMPACT.

ESG & sustainability technology by MESA

DIGITAL TRANSFORMATION PLATFORM FOR ESG & SUSTAINABILITY MANAGEMENT



# Our solutions based on a single platform for digital transformation

We designed and created MESA, an innovative technology to manage the **digital** transformation of all strategic processes by joining a complex engine of BPM, RPA, simulative and intelligent algorithms to Personal Productivity tools in a single integrated solution.



Business Process Management (BPM)



Robot Processing Automation (RPA)



Artificial Intelligence e Cognitive Services



Simulation and digital twin



Personal Productivity



IMPACT.

Our products are based on our MESA engine, which cover different strategic areas:



*Impact supports corporate sustainability in accordance with the most important global standards (GRI Certified).*

IMPACT.



*Continuity allows you to manage the estate of companies in an emergency, measure the actions taken and highlight them to investors.*

CONTINUITY.



*Procomp guides the Governance Risk & Compliance through the «Digital Transformation» improving quality, productivity and efficiency.*

PROCOMP.



*Skills allows to support synchronous and asynchronous mixed training through a guided, dynamic and personalized study path*

SKILLS.



*Analitica manages processes and performances of the finance team, a full support for the CFO and all the business users.*

ANALITICA.



*Optimize allows to optimize the functioning of the product or the real process through digital simulation.*

OPTIMIZE.

# IMPACT.

ESG & sustainability technology by MESA

IMPACT is the platform that allows you to manage all areas related to corporate sustainability.

Based on international GRI and CDP standards, IMPACT manages environmental and social performance, ensures compliance, minimizes risk and improves business value creation.



Certified Software  
& Tools Program  
MESA s.r.l.



premiata nel corso del summit internazionale  
dei giovani imprenditori in Giappone

IMPACT.



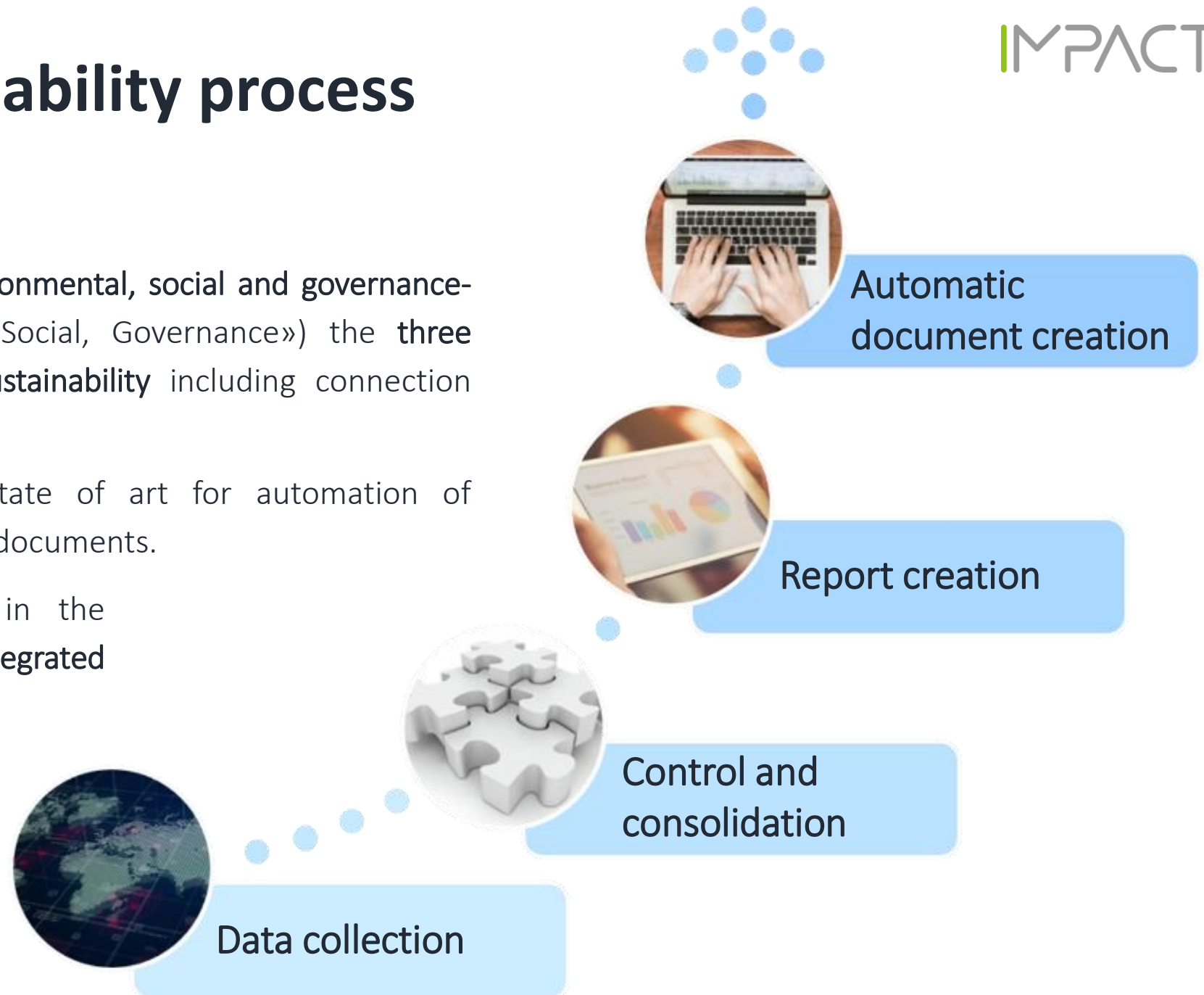
# Reporting Sustainability process

IMPACT you can measure the **environmental, social and governance-related impacts** («Environmental, Social, Governance») the **three essential** factors for measuring **sustainability** including connection with **SDGs**.

Our **technology** represents the state of art for automation of processes that aim to produce final documents.

**Data** that are already present in the **company systems** can be easily integrated into our system.

Our **intelligent reporting technology** can allow **data insight** on all GRI, CDP and non personalized indicators.





# Features



The Smart Disclosure technology help you to simplify and automatize the creation of the final document, from the Sustainability Report to the Non-Financial Disclosure.



The flexibility of the reporting engine allows you to manage information in an integrated way between the «dimensions» of sustainability.



A collaborative workflow allows you to manage different hierarchical approval levels and to organize data and «narrative» information collection.



The complete traceability indicating “who did what” easily guarantees conformity with regulatory requirements and simplifies audit activity for third parties.





- ✓ Improved overall **data reliability**
- ✓ Higher **accuracy**, data traceability and **less rework**
- ✓ **Time saving** in data collection, process analysis and reporting production
- ✓ Easily identifying **improvement areas** for **better sustainability performance**
- ✓ Increase of **internal synergies** and **reuse** produced **data** in other corporate information systems
- ✓ Greater involvement of the entire organization and **due date respect**
- ✓ **Simplifying external audits** saving a lot of time

# WHY CHOOSE IMPACT PLATFORM



# Some of our applications



Stakeholder Engagement



Materiality Analysis & Matrix



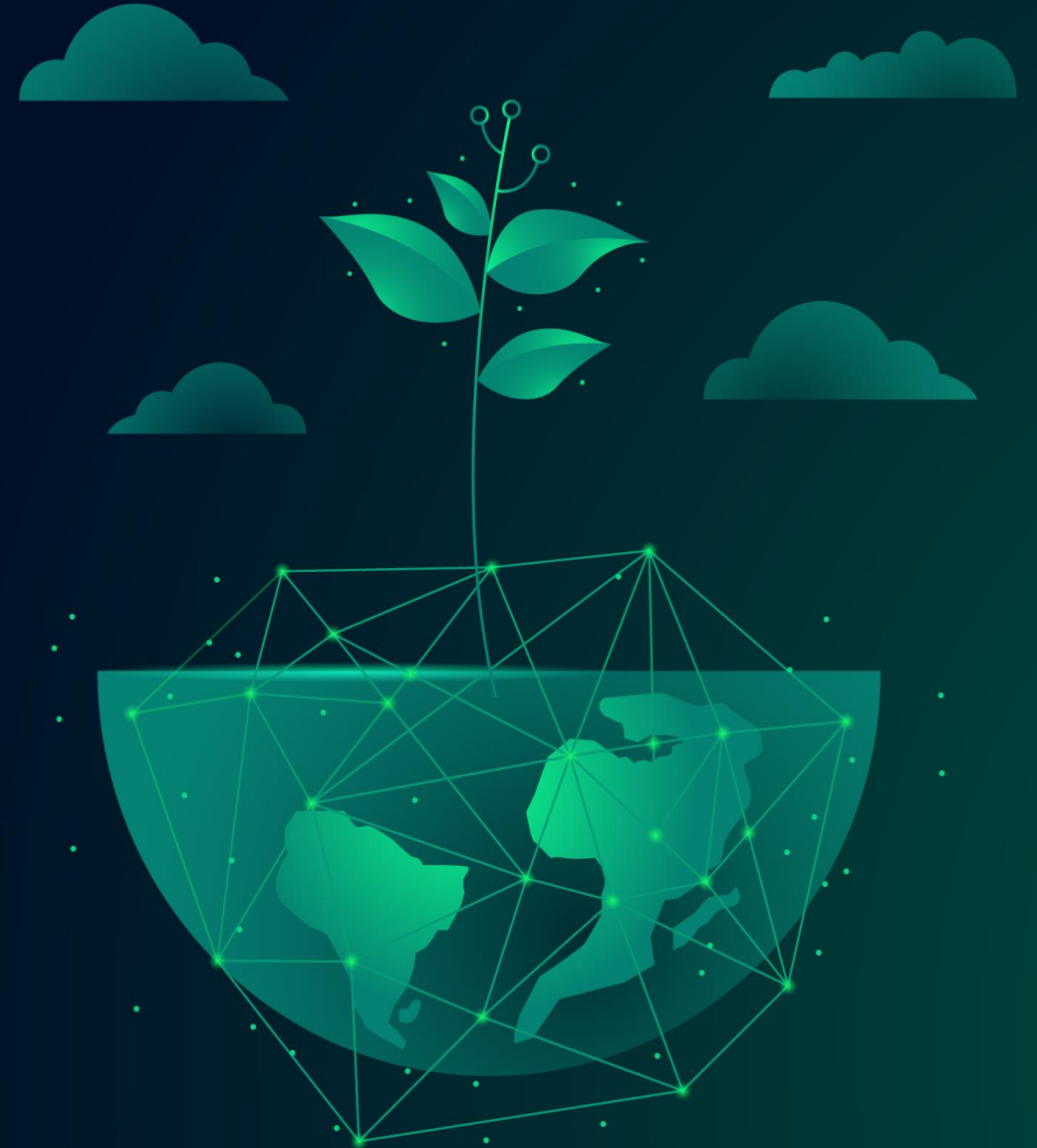
Non Financial Disclosure as GRI Standard



Sustainability Strategy & Planning  
vs SDGs



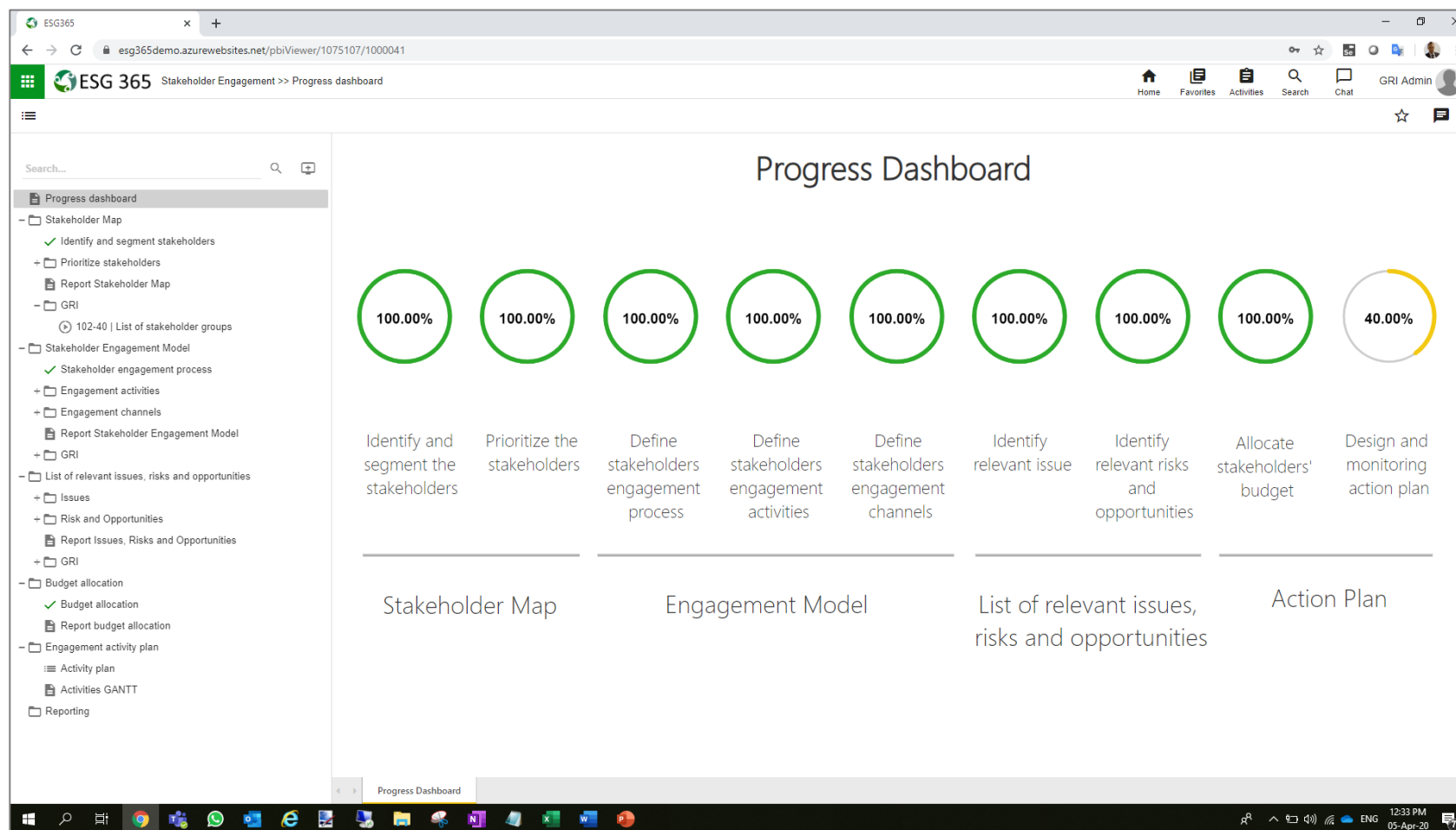
Environmental Reporting as CDP & GRI  
standards





# Stakeholder Engagement

Involve, inform and support stakeholders on sustainability topics, building an ongoing communication channel



To create the maximum commitment of the Stakeholder we developed a **strong methodology** to engage and support all the engagement activity versus the Stakeholder.

Our applications could **guide CSR Officers** to the more strategic Stakeholder and track all the initiative and monetary commitment to **effective** accomplish Sustainability objectives.

# Stakeholder Engagement

All informations about Stakeholders are automatically insert in Non Financial Disclosure as GRI standard.

The screenshot displays the ESG365 web application interface. The browser address bar shows the URL: `esg365demo.azurewebsites.net/survey/1075131/1000041`. The application header includes the ESG365 logo, navigation icons (Home, Favorites, Activities, Search, Chat), and a user profile for 'GRI Admin'. The main content area is titled '102-42 | Identifying and selecting stakeholders' and includes a 'Last update by GRI Admin at 3/4/2020 - 17:41' timestamp.

The interface is divided into three main sections: REQUIREMENTS, RECOMMENDATIONS, and GUIDANCE.

- REQUIREMENTS:** The reporting organization shall report the following information:
  - The basis for identifying and selecting stakeholders with whom to engage.
- RECOMMENDATIONS:** When compiling the information specified in Disclosure 102-42, the reporting organization should describe the process for:
  - defining its stakeholder groups;
  - determining the groups with which to engage and not to engage.
- GUIDANCE:** N/A

Below these sections, a detailed guidance text is provided, starting with '1. Report the basis for identification and selection of stakeholders with whom to engage. Include in the description the process used for defining the stakeholder groups and determining the groups with which to engage and not to engage.' The text describes the company's (StarK) active dialogue with stakeholders and the process for identifying key stakeholders and methods for stakeholder involvement.

The left sidebar contains a navigation menu with the following items:

- Progress dashboard
- Stakeholder Map
  - Identify and segment stakeholders
  - Prioritize stakeholders
  - Report Stakeholder Map
  - GRI
- Stakeholder Engagement Model
  - Stakeholder engagement process
  - Engagement activities
  - Engagement channels
  - Report Stakeholder Engagement Model
  - GRI
- 102-42 | Identifying and selecting stakeholders (selected)
- 102-43 | Approach to stakeholder engagement
- List of relevant issues, risks and opportunities
  - Issues
  - Risk and Opportunities
  - Report Issues, Risks and Opportunities
  - GRI
- Budget allocation
  - Budget allocation
  - Report budget allocation
- Engagement activity plan
  - Activity plan
  - Activities GANTT
  - Budget vs Actual
- Reporting
  - Synthetic Report Stakeholder Map
  - Synthetic Report Stakeholder Engagement Model
  - Synthetic Report Budget Allocation and Activities Plan



# Materiality Analysis & Matrix

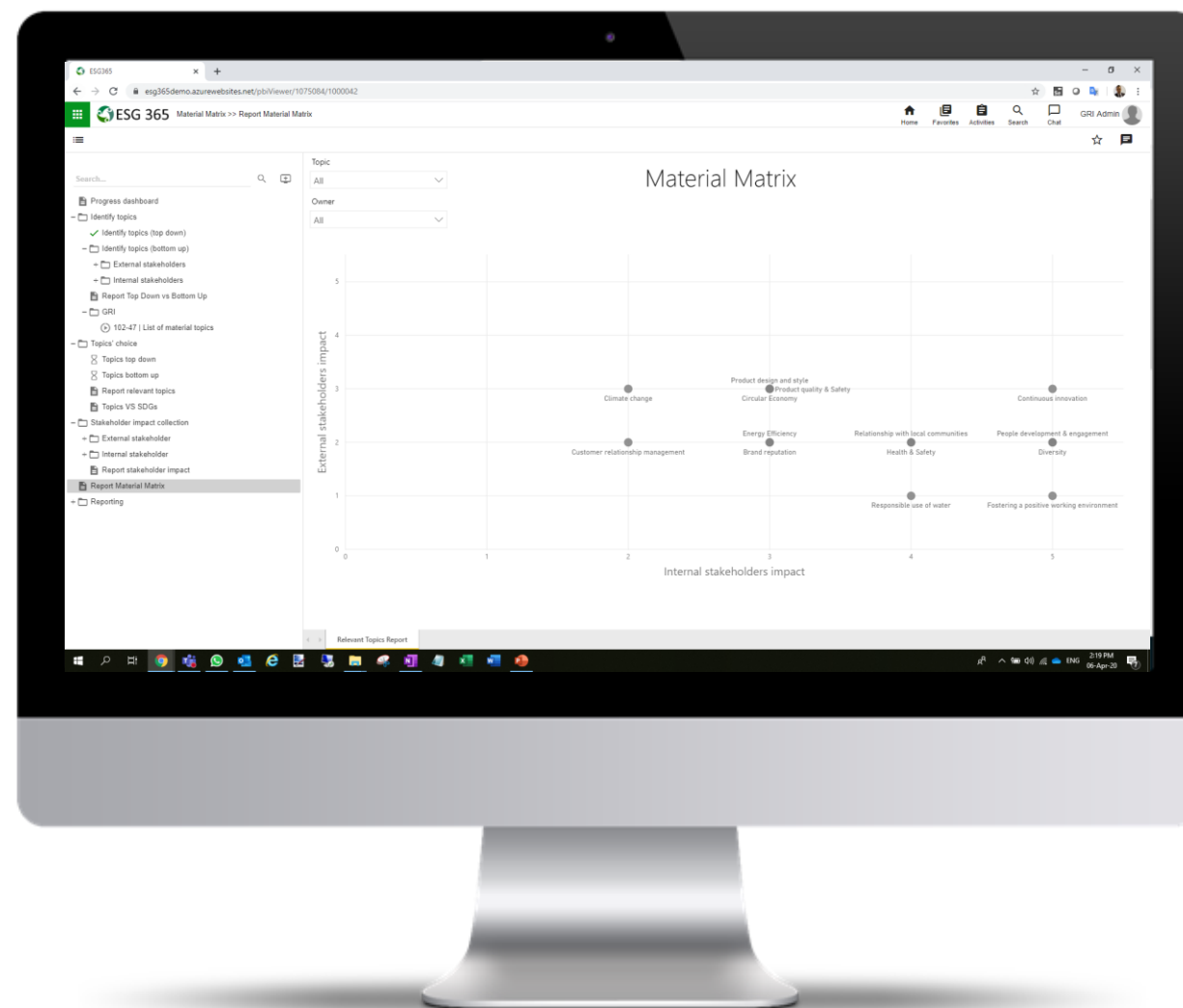
Simplify and manage the process of Materiality Analysis and the drafting of Materiality Matrix

The **Materiality Analysis** of the relevance of the individual stakeholders identified through the Stakeholder Map, is an essential step in understanding which actors and which **topics** are to be **considered priorities** with respect to the business strategy of the company.

A topic for a Stakeholder is more relevant as it is able to influence the company during present and future.

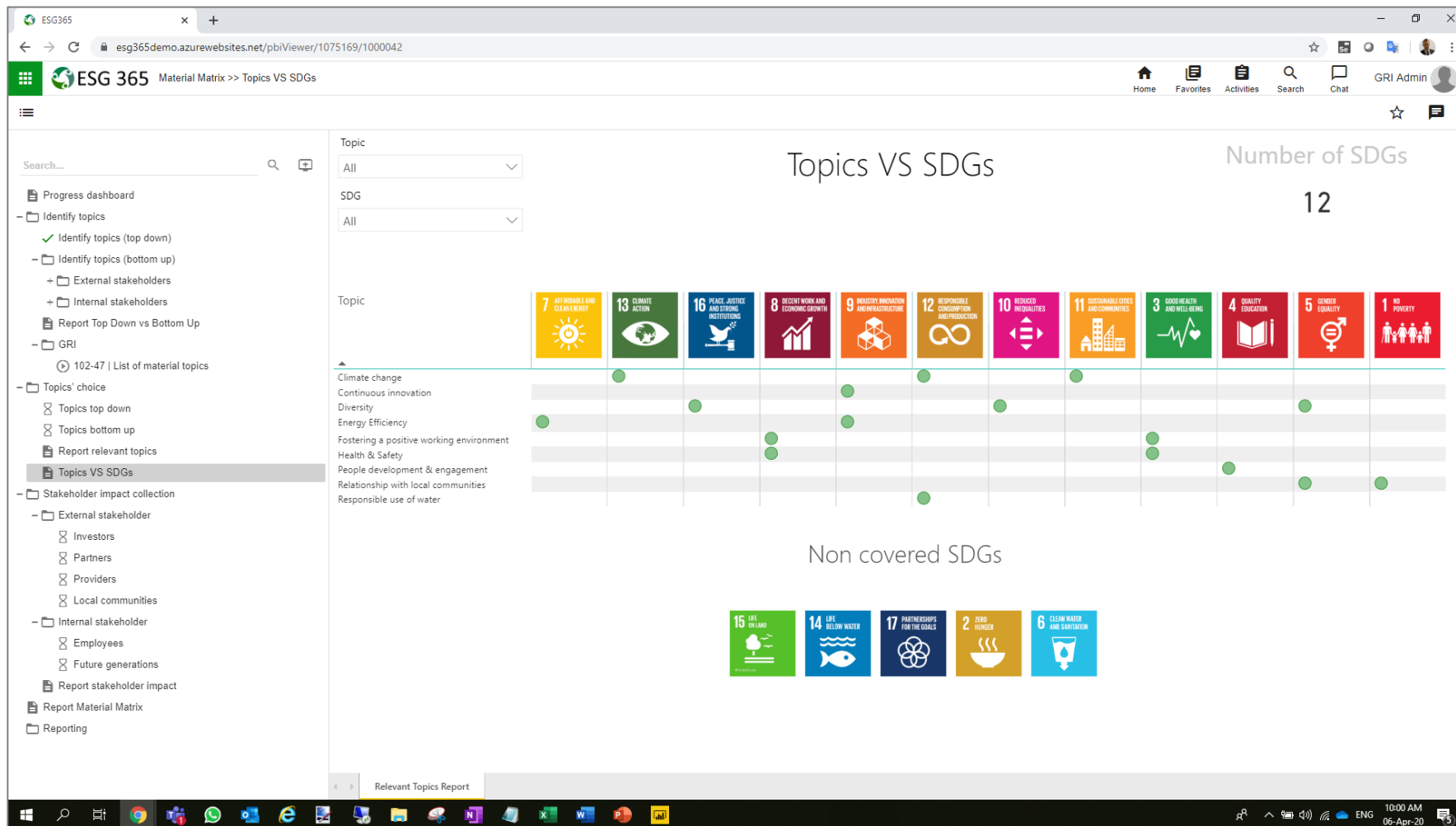
Corporate action must be concentrated more on these priority topics as part of an **effective Sustainability Strategy**.

**IMPACT** facilitate the **Materiality Analysis** with a straight forward collaborative workflow that allow to identify, analysis and monitor relevant topics.



# Materiality Analysis & Matrix

Simplify and manage the process of Materiality Analysis and the drafting of Materiality Matrix



Our applications also allow to connect topics to SDGs in a very simple way to allow company to identify and monitor the relevance aspects of Sustainability Strategy.

All data are automatically insert in Non Financial Disclosure as GRI standard.



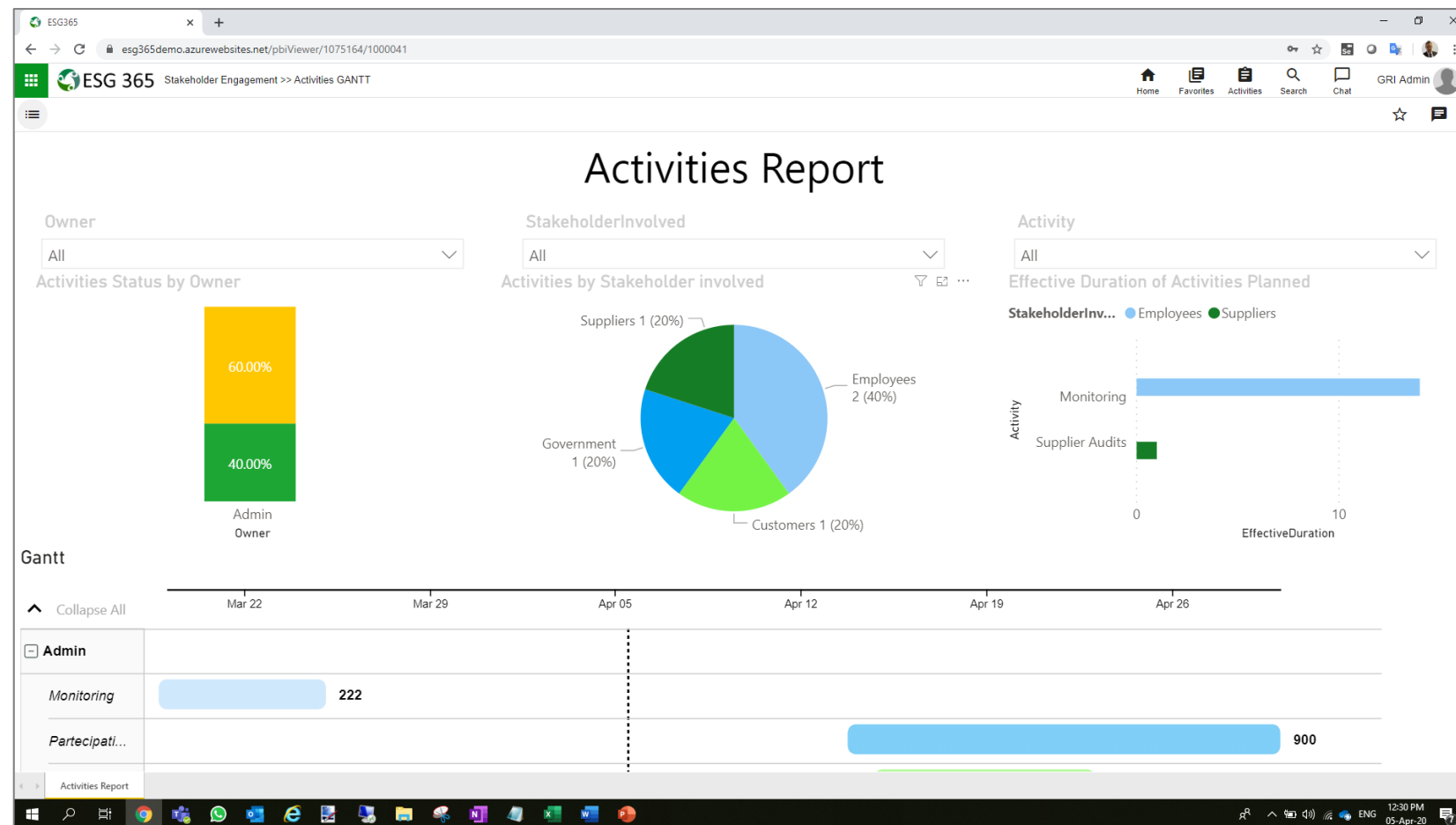
# Sustainability Planning

Planning, integrating and final accounting: everything in one single App

The sustainability manager's job is made very complex by the need to **coordinate and implement several activities** of a different nature between both internal and external stakeholders and to provide an **integrated view of SDGs and principle values**.

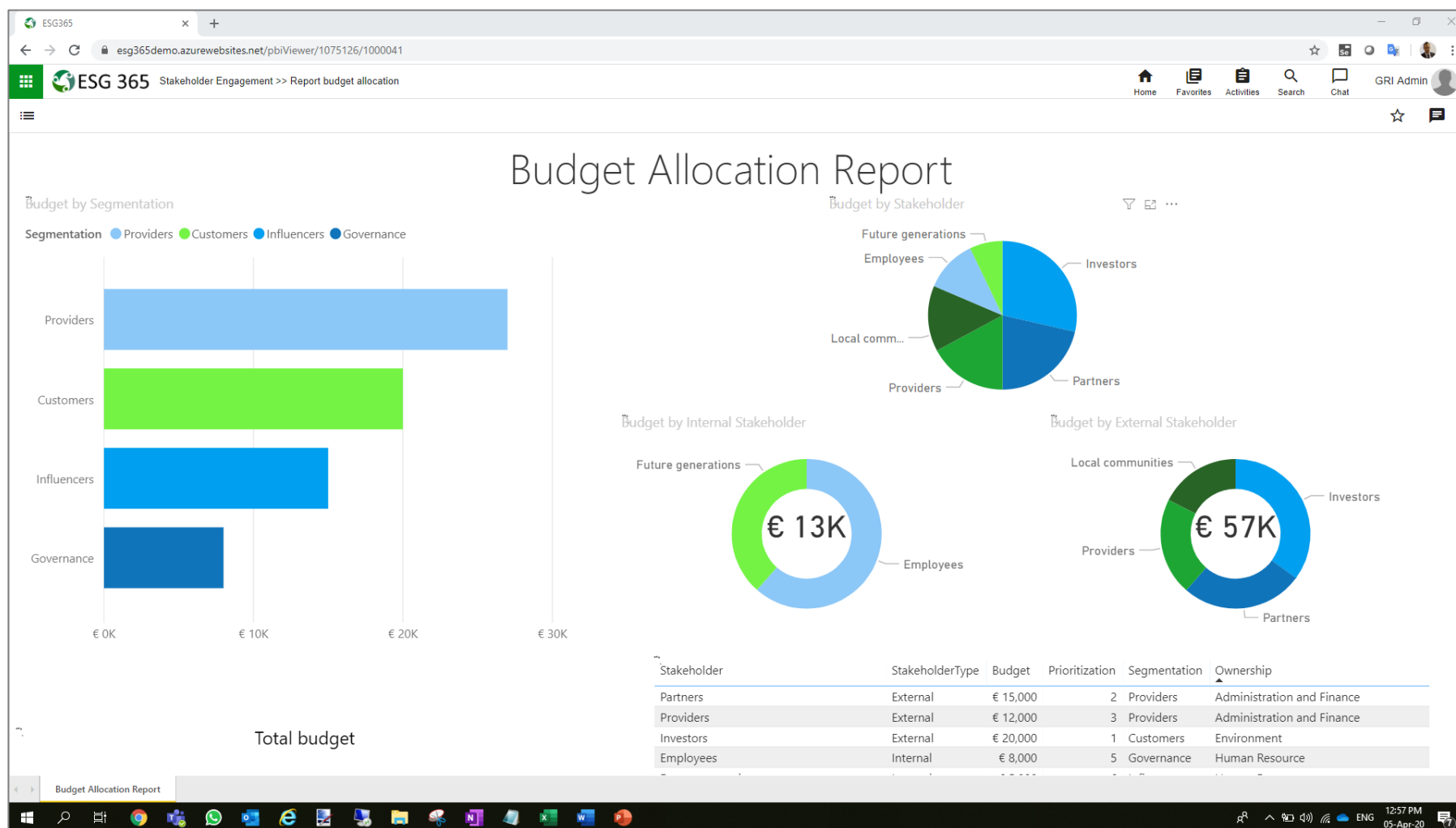
Our application allows:

- **Periodic planning** of sustainability activities and potential integration of additional activities (e.g. follow-ups) during the year;
- **Financial accounting** for the activities of the people involved;
- **Monitoring** of progresses by function and activity type.



# Sustainability Planning

Planning, integrating and final accounting: everything in one single App



A good **Sustainability plan** is the base for an effective **Sustainability Strategy**.

Our application also **track budget allocations** on activities defined during Stakeholder Engagement and allow the Management to monitor social impact.





# Non Financial Disclosure

Simplify and optimize the Non Financial Disclosure

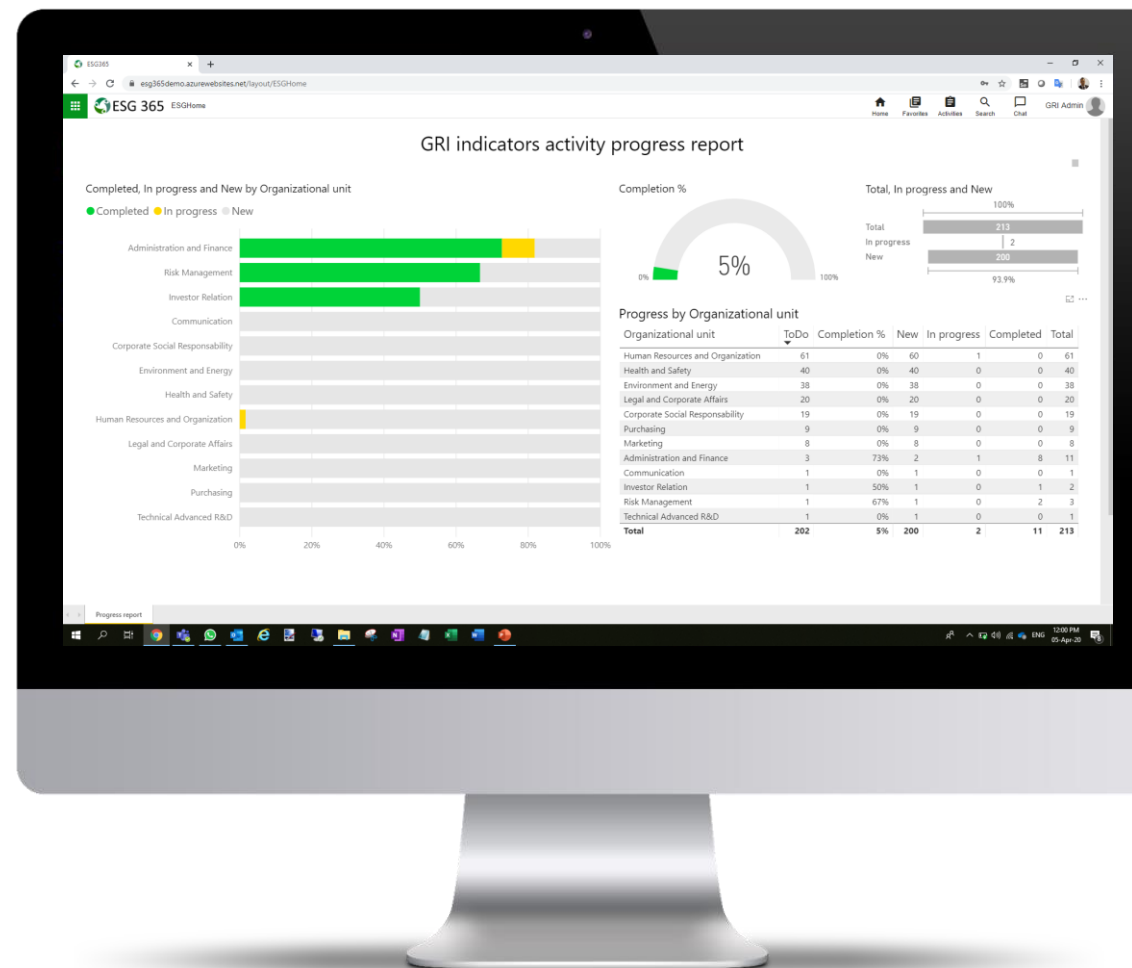


Certified Software  
& Tools Program  
MLSA

Nov 2019  
Nov 2020

Drafting the Non-Financial Disclosure is a complex and onerous process, but thanks to IMPACT collaborative workflows, Smart Disclosure and Web App:

- the process is **centrally managed**: you can assign responsibilities and deadlines for each piece of information, and check on their progress;
- **audit** activity is made **simple and transparent**;
- collecting information pursuant to from the different organizational units becomes **simple** and needs no rework.





# Non Financial Disclosure

Simplify and optimize the Non Financial Disclosure

IMPACT.



Certified Software  
& Tools Program  
MLSA



All data are delivered to the correct users in a really simple web based solution with history data and complex control and calculated rules that can easily allow users to perform a correct data entry. All data are validated through a personalized and dynamic authorization workflow.

ESG365

esg365demo.azurewebsites.net/survey/1000698/1000021

ESG 365 DNF - Data Entry 2019 >> 403-9 | Work-related injuries

Save Draft Waiting for Entities approval

Search...

Back

Health and Safety

Notes for guidance

Head Office

403-1 | Occupational health and safety management system

403-2 | Hazard identification, risk assessment, and incident investigation

403-3 | Occupational health services

403-4 | Worker participation, consultation, and communication on occupational

403-5 | Worker training on occupational health and safety

403-6 | Promotion of worker health

403-7 | Prevention and mitigation of occupational health and safety impacts dir.

403-8 | Workers covered by an occupational health and safety management sy.

403-9 | Work-related injuries

403-9.1 | Employees recordable work-related injuries

403-9.2 | Employees fatalities as a result of work-related injuries

403-9.3 | Employees high-consequence work-related injuries

403-9.4 | Workers work-related injuries

403-9.5 | Hour worked

403-9.6 | Close calls

403-10 | Work-related ill health

403-10.1 | Employees work-related ill health

403-10.2 | Workers work-related ill health

103 | Health & Safety

Entities

Savona

403-3 | Occupational health services

403-4 | Worker participation, consultation, and communication on occupatio.

403-5 | Worker training on occupational health and safety

403-6 | Promotion of worker health

1.a Please, report the following information for Stark's employees.

		2019			2018			2017		
Injuries - Employees (headcounts)	u.m.	Male	Female	Total	Male	Female	Total	Male	Female	Total
Total number of recordable work-related injuries	n	128	16	144	125	16	141	141	25	166
Workplace	n	109	10	119	106	10	116	125	22	147
In itinere	n	19	6	25	19	6	25	16	3	19
Total number of fatalities as a result of work-related injuries	n	1	0	1	1	0	1	0	0	3
Workplace	n	1	0	1	1	0	1	0	0	0
In itinere	n	0	0	0	0	0	0	0	0	0
Total number of high-consequence work-related injuries (excluding fatalities)	n	2	1	3	2	1	3	4	0	4
Workplace	n	2	1	3	2	1	3	3	0	3
In itinere	n	0	0	0	0	0	0	1	0	1
Total number of hours worked	h	17221996,75	3045685,13	20267681,88	17058998,75	3045325,13	20104323,88	15188934,69	2814578,68	18003513,37

Rating

		2019			2018			2017		
Rate of recordable work-related injuries	u.m.	Male	Female	Total	Male	Female	Total	Male	Female	Total
	%	149	105	142	147	105	140	186	178	184





# Non Financial Disclosure

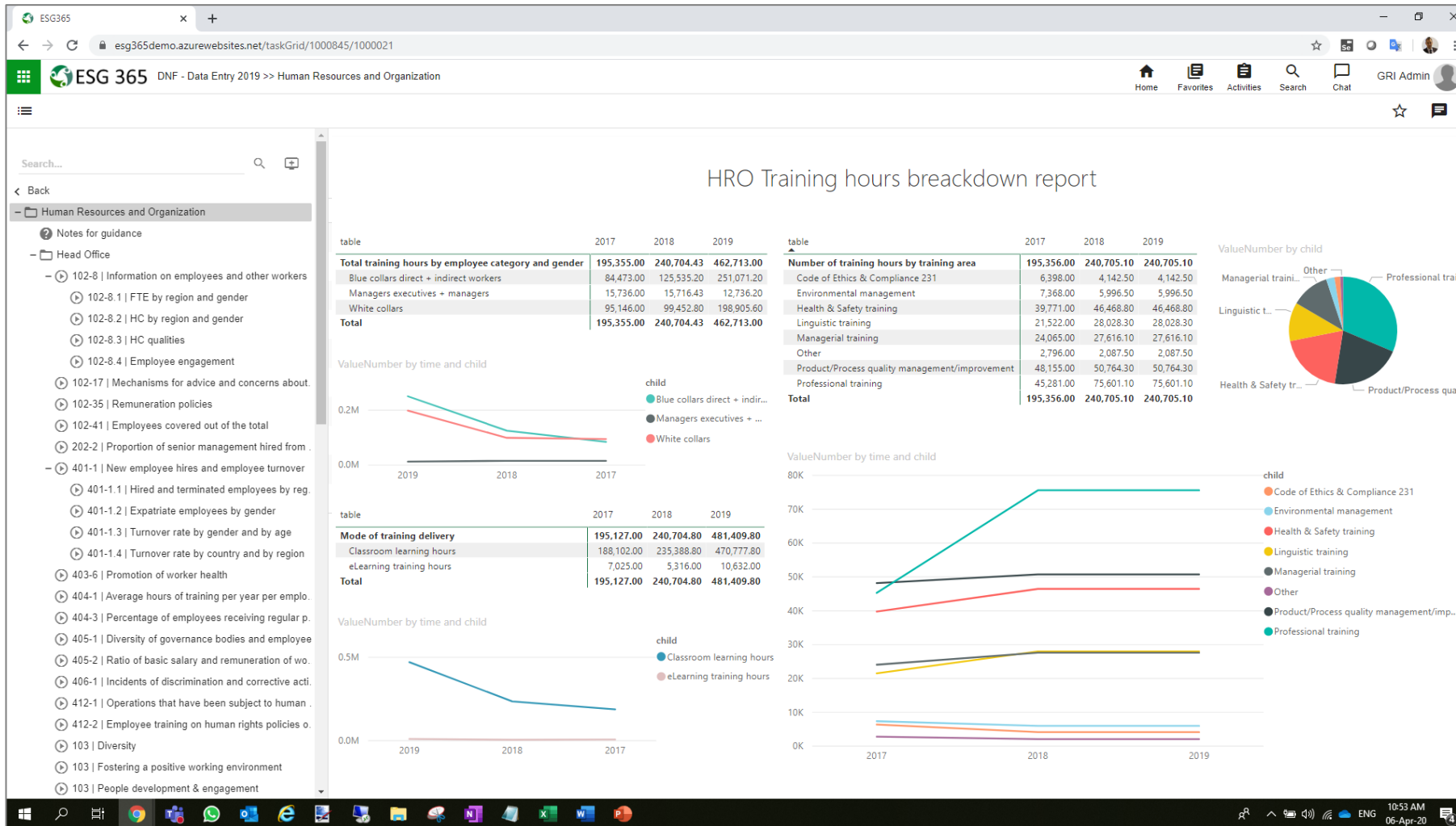
Simplify and optimize the Non Financial Disclosure

IMPACT.



Certified Software  
& Tools Program  
MLSA...

Nov 2019  
Nov 2020



The reporting system allows every organizational unit to analyze indicators in a multidimensional way by company, category, time and all the other sustainability dimensions.

# Non Financial Disclosure

Simplify and optimize the Non Financial Disclosure



Certified Software  
& Tools Program  
MLSA 3.0

Nov 2019  
Nov 2020

Thanks to Smart Document technology our tool allow you to dynamically integrate and collect data directly into the final document, dividing its parts among the different business players.

Our platform is GRI certified.

AutoSave On GRIndicatorBook2020.docx - Word

File Home Insert Draw Design Layout References Mailings Review View Developer Help Foxit Reader PDF

Clipboard Font Paragraph Styles

102-13.indicator1

**102-13 | Main memberships**

AREA: - | FUNCTION: MKTG | TOPIC: -

Per la promozione di un dialogo costruttivo con le istituzioni e per favorire il confronto fra i principali attori del settore, StarK aderisce a differenti associazioni e partecipa a tavoli di lavoro sia a livello locale sia internazionale, impegnandosi a collaborare in un'ottica di sistema che consenta all'intero comparto automobilistico e motoristico di crescere, accelerare l'innovazione e realizzare progressi in una prospettiva d'interesse generale. A livello internazionale il Gruppo collabora con le seguenti associazioni/organizzazioni: CLEPA, CAEF, SAE, UNECE.

- ✓ Nanjing Association of Enterprises with Foreign Investment
- ✓ Hebei Machinery Industry Association
- ✓ Langfang Equipment Industry Association
- ✓ International Market Assessment India Pvt. Ltd.
- ✓ CEO & CFO forum"
- ✓ Indo Italian Chamber of Commerce & Industry
- ✓ Automotive Research Association of India
- ✓ Automotive Component Manufacturers Association
- ✓ Society of Indian Automobile Manufacturers
- ✓ Maharashtra Chamber Of Commerce & Industries
- ✓ Confederation of Indian Industry
- ✓ ACEA - Association des constructeurs européens d'automobiles
- ✓ ACI - Automobile Club d'Italia
- ✓ AICPI - Associazione Italiana Consulenti Proprietà industriale di impresa
- ✓ AIPI (associazione progettisti italiani)
- ✓ Airc - Associazione Italiana per la Ricerca Industriale
- ✓ AIRI - ASSOCIAZIONE ITALIANA RICERCA INDUSTRIALE
- ✓ ANCMMA - Associazione Nazionale Ciclo Motociclo Accessori
- ✓ Anfia - Associazione Nazionale Fra Industrie Automobilistiche
- ✓ ASM International
- ✓ Assofond
- ✓ AUTOSAR (Safety Group) - Automotive Open System Architecture
- ✓ Board Automotive SPIN Italia - Software Process Improvement Network

Savona, Genova 16 2020

Page 2 of 136 12 of 42837 words Italian (Italy)

Display Settings Focus 1:04 PM 05-Apr-20





# Environmental Reporting

Simplify drafting Environmental Report by collecting data in a structured and integrated way

The screenshot displays the ESG 365 application interface within a web browser. The browser address bar shows 'esg365demo.azurewebsites.net/survey/1001737/1000021'. The application header includes 'ESG 365', 'DNF - Data Entry 2019 >> Notes for guidance', and user information 'GRI Admin'. A left sidebar contains a search bar and a tree view of categories: Notes for Guidances, Emission factors, Conversion factors, Atmospheric emissions, Energy, Finis, GHG, Production, Energy Projects, Chemical, Waste, Water, and Soil. The main content area is titled 'Please Specify Text for intro notes' and contains three data entry sections, each with a green header bar and a table structure. The first section is for 'GRAPHITE' with fields for 'Quantity of graphite for carbon content correction (graphite/rearburant/carburizer)', 'Carbon content of raw material', and 'Final carbon content in product'. The second section is for 'CO2' with fields for 'Quantity consumed for heating' and 'Average % of CO2 integrated in product'. The third section is for 'CH4' with fields for 'Quantity of CH4 for carbon content correction', 'Average % of CH4 integrated in product', and 'Total CH4 loss'. Each table has columns for 'u.m.', '@PY', '@CY', and 'Notes'. The bottom of the screen shows a Windows taskbar with various application icons and a system clock indicating 9:52 AM on 06-Apr-20.

Based on the **CDP** and **GRI** standards, this application allows you to manage collection and compilation of environmental data from the different data owners, often based in various countries across the world and with a different timing update (monthly, quarterly, yearly).

Thanks to IMPACT **collaborative workflows** you can:

- collecting information from the different organizational units becomes **easier** and **needs no rework**;
- the process is **centrally managed**, thus allowing you to assign responsibilities and deadlines for each piece of information and check on their progress.



# Environmental Reporting

IMPACT.

Simplify drafting Environmental Report by collecting data in a structured and integrated way

Our platform can be custom-set to manage the rules of data calculation (i.e. waste, emissions, carbon footprint, circular economy, etc.) from the fields and validated all information to automatically integrate it in GRI indicators.

ESG365

esg365demo.azurewebsites.net/survey/1000313/1000021

ESG 365 DNF - Data Entry 2019 >> 305-2 | Energy indirect (Scope 2) GHG emissions

Home Favorites Activities Search Chat GRI Admin

Save Draft

305-2 | Energy indirect (Scope 2) GHG emissions

AREA: - | FUNCTION: EE | TOPIC: EMISSIONS

**RELEVANCE**

This Indicator covers the disclosure of energy indirect (Scope 2) GHG emissions, in CO2 equivalents, of the GHGs covered by the UN 'Kyoto Protocol' and the WRI and WBCSD 'GHG Protocol Corporate Accounting and Reporting Standard'. GHG emissions are a major contributor to climate change and are governed by the UN 'United Nations Framework Convention on Climate Change' 100 and the subsequent UN 'Kyoto Protocol'. Some GHGs, including methane (CH4), are also air pollutants that have significant adverse impacts on ecosystems, air quality, agriculture, and human and animal health. As a result, different national and international regulations and incentive systems (such as tradable emission permits) aim to control the volume, and reward the reduction of GHG emissions. An organization's energy indirect (Scope 2) GHG emissions result from the generation of the electricity, heating, cooling, and steam which it purchased from other organizations for its own consumption. For many organizations the energy indirect (Scope 2) GHG emissions that result from the generation of purchased electricity are much greater than their direct GHG emissions.

**DEFINITIONS**

**Base year** - A historical datum (such as a year) against which an organization's energy consumption is tracked over time.  
**Carbon dioxide equivalent** - CO2 (carbon dioxide) equivalent is the universal unit of measurement used to compare the emissions from various GHGs based on their global warming potential (GWP). The CO2 equivalent for a gas is determined by multiplying the metric tons of the gas by the associated GWP.  
**Energy indirect (Scope 2) GHG emissions** - Emissions that result from the generation of purchased or acquired electricity, heating, cooling, and steam consumed by the organization.  
**Global warming potential (GWP)** - GWP values describe the radiative forcing impact of one unit of a given GHG relative to one unit of carbon dioxide over a given period of time. GWP values convert GHG emissions data for non-CO2 gases into units of CO2 equivalent.

**COMPILATION**

Identify indirect emissions of GHGs that result from the generation of the electricity, heating, cooling, and steam which is purchased or acquired for own consumption by the organization. Calculate the gross location-based energy indirect (Scope 2) GHG emissions that result from the generation of purchased electricity, heating, cooling, and steam. Exclude any GHG trades, such as purchases, sales, or transfers of offsets or allowances.

1. Report total value of indirect emissions by indirect energy consumption within the organization (see 302-1).

Energy indirect greenhouse gas (GHG) emissions (Scope 2)	u.m.	2020	2019	2018
Market Based	1CO2eq			
Electrical energy from non renewable sources	1CO2eq			
District heating	1CO2eq			
Location Based	1CO2eq			
Electrical energy				

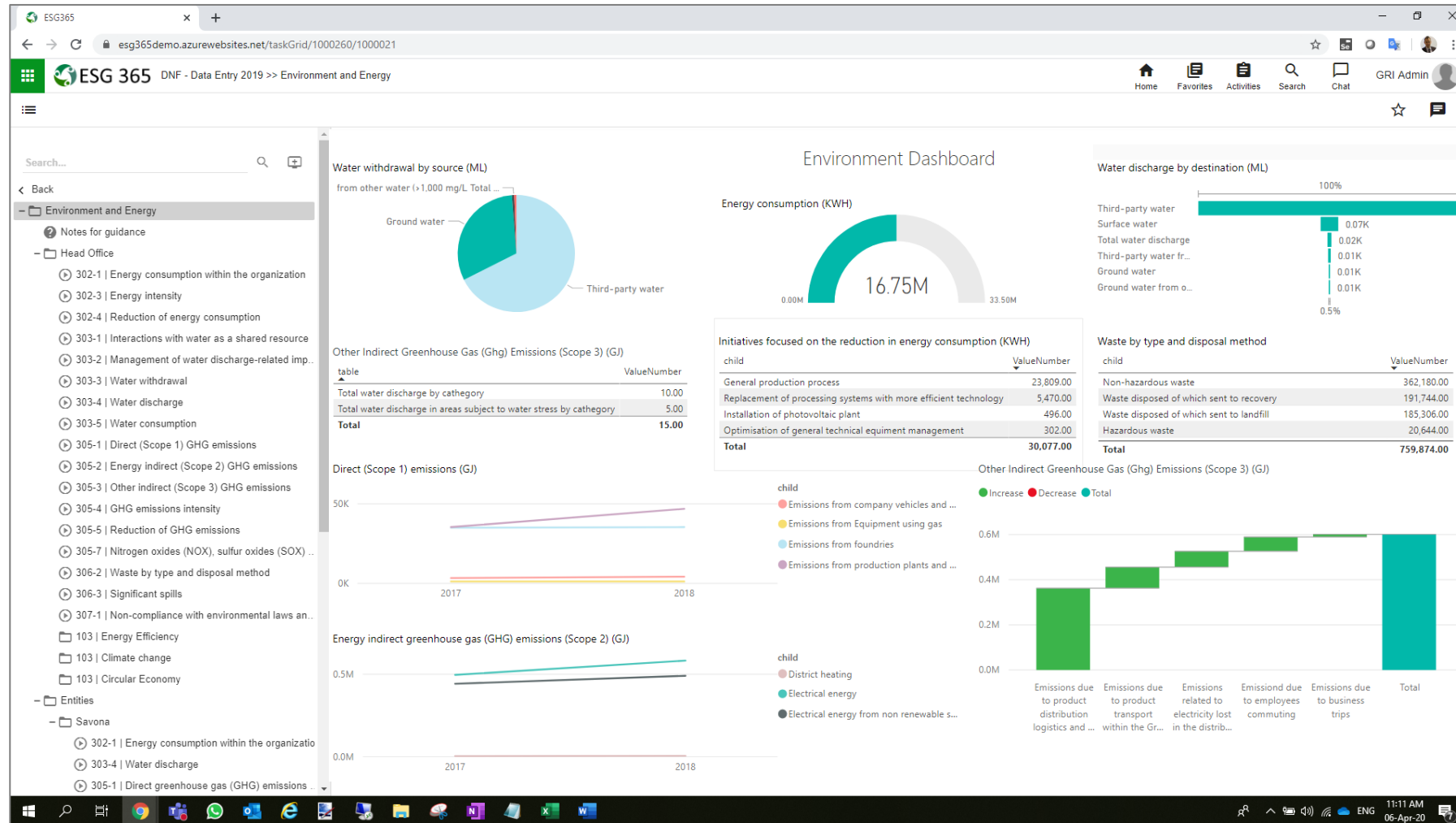
20



# Environmental Reporting

IMPACT.

Simplify drafting Environmental Report by collecting data in a structured and integrated way



With a very complete set of dashboard, charts, KPIs, reports, and trend analysis, our platform allow Environment expert to analyse and easily identify improvement opportunity and related problems.

Custom reports are easisly to develop thanks to Microsoft PowerBI integration.



# Benefits

01.

Simple, dynamic and accurate reporting

Having accurate reports becomes extremely easier, the reports are updated in a collaborative and dynamic way, with data and comments that can be edited in real time.

04.

Security and control

A powerful Audit system guarantees activity traceability and process transparency.

02.

Comfort and user-friendly

IMPACT enhances the systems existing in the company and it guarantees a large variety of formatting options, thanks to the user interface implemented by Microsoft Word.

05.

TCO reduction

Thanks to unified process management, the tracking and control of all the activities, the elaboration time reduction, etc.

03.

Elimination of human errors

Manual processes are automated in order not to waste time in confirming and researching for information. Users have always previous year data to understand if the data inserted is correct.



GRI Admin



Percentage

01. Organizational profile

02. Strategy

03. Ethics and integrity

05. Stakeholder engagement

06. Reporting practices

Define Materiality

Implement



System Admin

GRI Collection Starting Period

GRI Definition

Consolidation

Training is necessary to create competence and to face possible resistance to application change. For this reason we offer more training solutions based on your needs.



### Classroom

Virtual o real class

More levels

Bonus Webinars



### On the job

Direct support

on your system

Individual or group



### Embedded

Training video, Live chat

and Virtual Assistant

integrated in the solution





ESG & sustainability technology by MESA

[www.mesaconsulting.eu](http://www.mesaconsulting.eu)

**Headquarter - sede legale**

Campus Universitario

Via Magliotto 2

17100 Savona (SV) - Italy

**General Inquiries**

Phone: +39 019 861818

Email: [info@mesaconsulting.eu](mailto:info@mesaconsulting.eu)



Certified Software  
& Tools Program  
MESA s.r.l.

Nov 2019  
Nov 2020