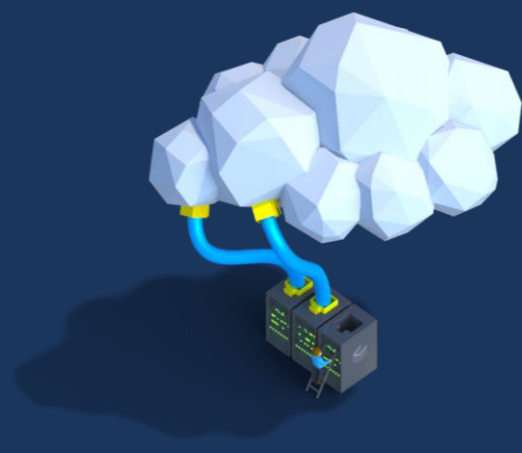


Cloud Migration Assessment

AI-Powered Cloud Assessment



Ready to Migrate to Azure? Worried about cloud security? Confused by the ever-growing range of cloud services and unsure of varying cost structures?

Our AI-powered assessment leverages the power of software

Installed in minutes, inventories complete in hours, then AI-engine determines optimal cloud resource allocation.

This rich dataset is then analysed and interpreted by cubesys Azure consults, enabling customers to understand the precise costs of migrating optimised workloads from on-premises data centres to Azure.

Optimisation prior to migration is a critical step that diminishes sticker shock and keeps migrations on track. The assessment also models the cost options of different licensing models and discounting mechanisms, such as RIs and Azure Hybrid Benefit. The end result is that cubesys clients are able to quickly build a data-driven business case for Azure migrations.

Once you have decided to move to Azure, cubesys AzureFactory is there to assist you with the rest of the cloud journey, including detailed migration planning and ongoing AI-powered optimisation.

Why customers use cubesys Assessments?

- Builds a data driven business case
- Leverage the power of software
- Automatically optimise workload placement
- AzureFactory confidence

AI-powered Assessment

- Easy deployment options
- Quickly collate data
- AI-powered analysis
- Build a data optimised business case

Optimised Migration Strategy

- Understand Cloud cost structure
- See the impact of Reserved Instances and Azure Hybrid Benefit
- Optimisation for migration
- Plan your migration strategy

AzureFactory

- Mitigate Risk
- Prepare a Secure and Manageable environment
- Establish Foundation Architecture
- Eliminate mistakes with a DevOps automation

100% refundable when you use cubesys cloud migration services

“cubesys’ approach to establishing Azure and deploying our first workloads was excellent. It gave us confidence to adopt cloud services for our business, and helped us manage them effectively”
J.Straker, Deputy IT Director