



OpsCompass

CATCH YOUR

DRIIFT

Set a secure baseline against
your compliance, security, and
cost *within minutes.*

Operationalize Cloud Governance

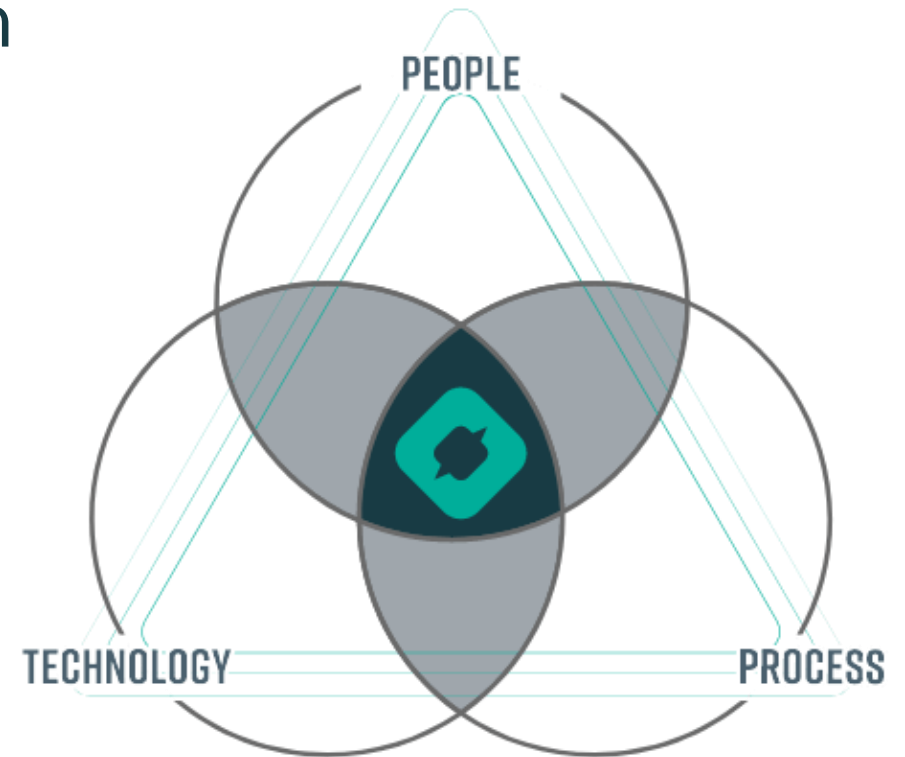


- Practical Iterative approach
- CAF becomes Sticky and Real
- Quantify success with cloud compliance scoring
- Visibility into cloud governance posture
- Manage Security, Compliance, Cost in real time
- Cross-team collaboration (DevSecOps)

Initial Touchpoint: *Strategy & Plan*

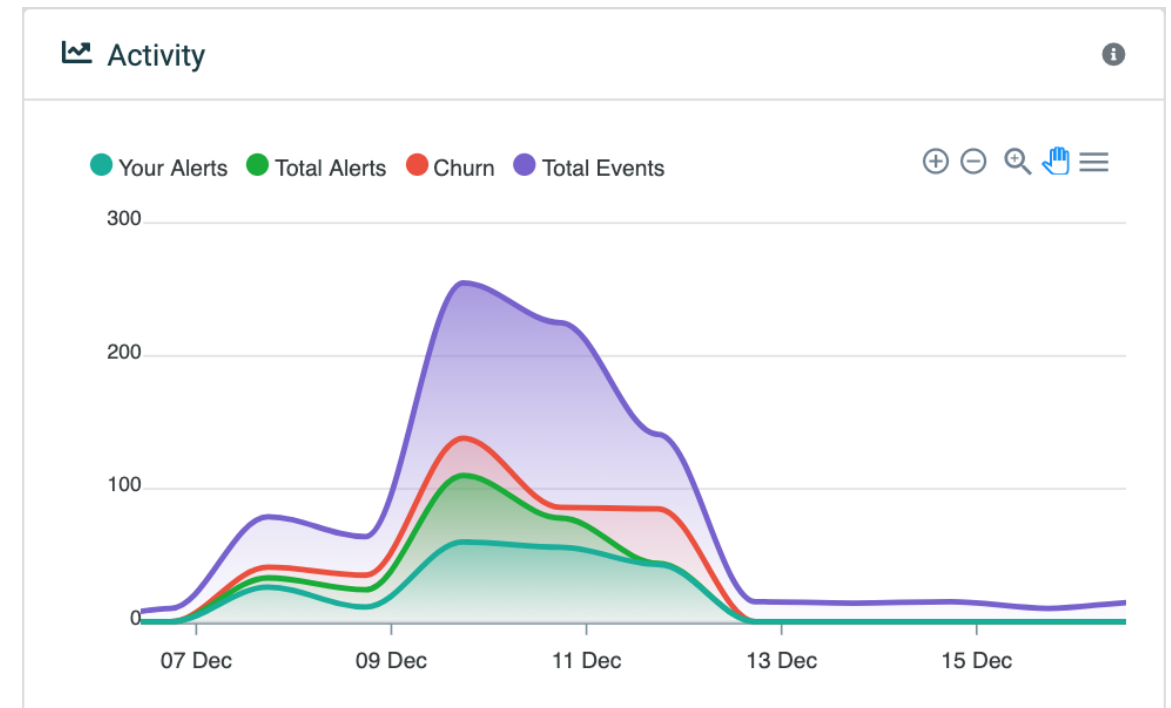
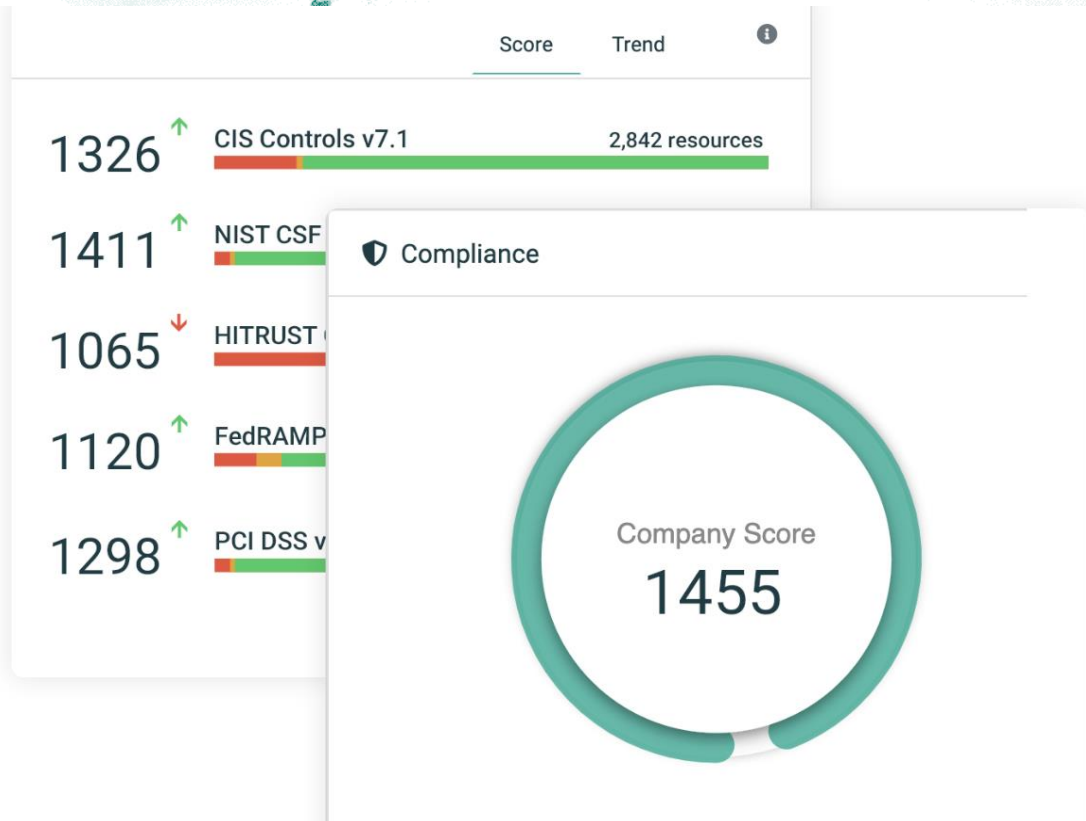
- Define business justification and outcomes
- Align business plan with cloud adoption

- Establish a governance foundation within the Cloud Adoption Framework
 - Management Groups
 - Blueprints
 - Policies
 - Roles
 - Cloud Center of Excellence
- OpsCompass role within the CAF
 - Ready
 - Govern
 - Manage



Touchpoint 1: *Ready* Kickoff and Onboarding

- Prepare the Cloud Environment
- Connect OpsCompass SaaS to establish initial baseline
- Utilize CIS Framework as an actionable insight
- Kick start CAF faster with clear visibility into problems



Touchpoint 2: *Govern*

Establish Baseline

- Implement Governance Best Practices
 - Landing Zones
 - Blueprint deployments
- Baseline Enforcement
 - Drift Detection
 - Compliance Analysis

Changed by: Beta

Charlie Cuddy (ccuddy@opscompassdemo.onmicrosoft.com)

Impact



Cost



Explain This Change

Acknowledge

Set As Baseline

\$* Estimated cost impact: \$90.72 per month



Document > Properties > Hardware Profile > Vm Size:

(Changed)

(Old)

Standard_D2_V3

(New)

Standard_D1_v2

```
{
  "document": {
    "properties": {
      "hardwareProfile": {
        "vmSize": "Standard_D2_V3",
        "vmSize": "Standard_D1_v2"
      }
    }
  }
}
```



Account Monitoring and Control

Default Network Access Rule For Storage Accounts Must Be Set To Deny.

High

Policy: (CIS Controls v7.1 16) Account Monitoring and Control

Recommended:

1. Go to Storage Accounts
2. For this storage account, Click on the settings menu called Firewalls and virtual networks.
3. Ensure that you have elected to allow access from Selected networks.
4. Add rules to allow traffic from specific network.
5. Click Save to apply your changes.

[Go To Compliance](#)

(Added)

Properties:

Network Acls:

Default Action: Allow



Maintenance, Monitoring and Analysis of Audit Logs



Solutions Library

Basic Enterprise Datacen...

Details
Basic network structure for Enterprise Datacenter workloads

Download View

Create Edge Node v1

Details
HDInsight Cluster with an Edge Node

Download View

Create Team Subscriptio...

Details
Make new Azure subscriptions for a team

Download View

Network Hub

Details
Network segment ready to talk to other network segments

Download View

Network Spoke

Details
Isolated VNet hooked to a hub

Download View

Payment Card Industry

Details
Network infrastructure for a PCI-compliant network

Download View

Touchpoint 3: *Manage*

Manage Process & Tune Noise

- Implement Operations
 - Develop workflows for baseline management
 - Right information to the right people
- Deliver Cloud Adoption MVP
 - Assign baseline responsibility to individuals
 - Monitor and remediate compliance process

Resource Type: Microsoft.Storage/storageAccounts	Timestamp: 1/7/20 20:46 CST	Data Security	View
Resource Type: Microsoft.Network/networkSecurityGroups	Timestamp: 1/7/20 20:46 CST	Compliance Networking Security	View
Resource Type: Microsoft.Compute/virtualMachines	Timestamp: 1/9/20 2:10 CST	Security Center	View
Resource Type: Microsoft.Network/publicIPAddresses	Timestamp: 1/8/20 2:18 CST	Networking Security	View
Resource Type: Microsoft.Compute/virtualMachines	Timestamp: 1/10/20 12:03 CST	Cost	View

```
{
  "document": {
    "properties": {
      "kubernetesVersion": "1.14.8",
      "agentPoolProfiles": [
        {
          "name": "agentpool",
          "count": 3,
          "vmSize": "Standard_DS2_v2",
          "osDiskSizeGB": 100,
          "maxPods": 30,
          "osType": "Linux"
        }
      ],
      "addonProfiles": {}
    }
  }
}
```

Kubernetes

```
{
  "document": {
    "properties": {
      "addonProfiles": {},
      "networkProfile": {
        "networkPlugin": "azure",
        "loadBalancerSku": "Standard",
        "loadBalancerProfile": {
          "managedOutboundIPs": {
            "count": 1
          },
          "serviceCidr": "10.0.0.0/16",
          "dnsServiceIP": "10.0.0.10",
          "dockerBridgeCidr": "172.17.0.1/16"
        }
      }
    }
  }
}
```

Networking

Touchpoints: *Govern & Manage*

Mature CAF Process with OpsCompass

- Beyond the Rapid Prototype
 - Knowledge transfer and transition into an educational-coaching role
 - Mature a Cloud Center of Excellence process around compliance

