

The logo for Fortude features the word "FORTUDE" in a bold, dark blue, sans-serif font. The letter "F" is stylized with a small orange triangle at the top left and a small light blue triangle at the bottom left. The letters "O", "R", "T", "U", and "D" are solid dark blue. The letter "E" is also solid dark blue. The logo is centered between two thin, vertical light gray lines.

**FORTUDE**

Delivering Impact with Business Intelligence

# FORTUDE



**240+**  
Professionals



**20+**  
Countries



**100+**  
Projects

# **intellint**

A Fortude Brand

## Partners

Microsoft  
Partner



Gold Data Analytics  
Gold Data Platform

## Industries

Fashion

Food & Beverage

Manufacturing

Healthcare

Distribution

& Sales

## Offices

USA | Sri Lanka | Australia | UK

## Clients Include ▼



## Success Stories ▼



Delivered a Sales & Marketing BI Solution for Leading F&B Manufacturer



Increased business performance with actionable insights for a large retail conglomerate



Improving insights and reporting for a leading thread manufacturer

# Core Competencies

## BI Consultancy

- BI & Data Strategy and Roadmap
- BI Solution Architecture
- Data Platform Architecture
- Self-service BI consultancy and customized trainings

## Analytics

- Interactive BI Reporting and Dashboards
- Advance Analytics (Predictive modeling & forecasting)
- AI & Cognitive services based analytics

## Big Data

- Modern Data Warehousing
- Data Integration
- Analytics platform development



Azure Data Factory



Azure Data Lake store



Azure Storage



Cosmos DB



Azure Databricks



SQL DB



Azure ML



Azure ML Studio

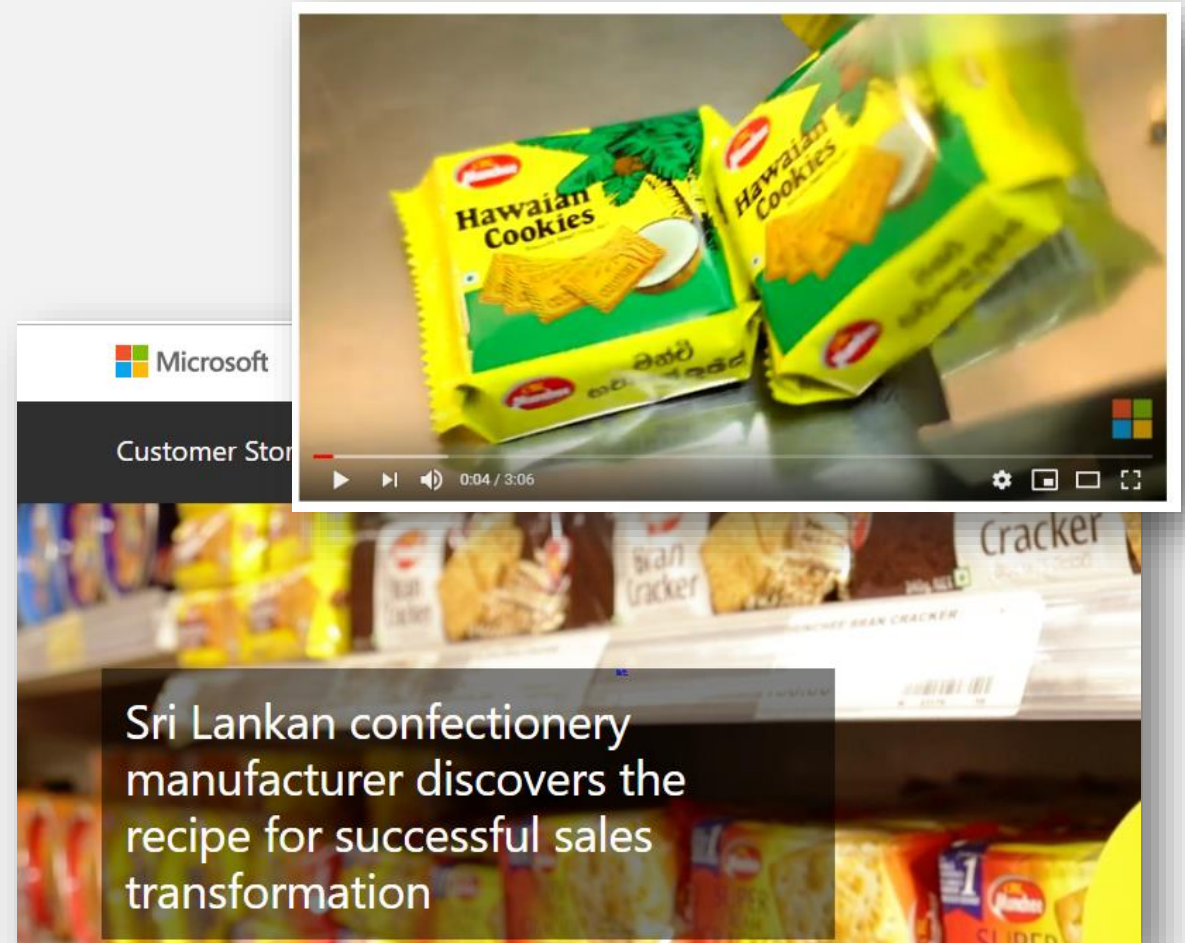
# Microsoft Customer Story

“The cloud ensured that our solution was implemented with low upfront investment and minimal deployment time, while Microsoft and their solutions partner **Fortude**, helped us with the seamless integration. With our aggressive business plans to expand to other countries in the region, implementing this solution is as easy as plug and play.”

**Chandrima Rodrigo**

Group General Manager – Information Technology  
Ceylon Biscuits Limited

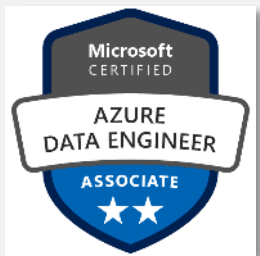
[ [CASE STUDY](#) | [VIDEO](#) ]





# Capabilities & Skills

# Certifications, Awards & Competencies



## Certifications

- ▶ Microsoft Certified: Azure Data Engineer Associate
- ▶ Microsoft Certified: Azure AI Engineer Associate
- ▶ Microsoft Certified Solutions Expert: Data Management & Analytics
- ▶ Microsoft Certified Solutions Expert: Business Intelligence
- ▶ Microsoft Certified Solutions Expert: Data Platform
- ▶ Microsoft Certified Solutions Associate: BI Reporting
- ▶ Microsoft Certified Solutions Associate: SQL Server
- ▶ Microsoft Certified IT Professional: Database Developer
- ▶ Microsoft Certified IT Professional: Database Administrator

## MPN Competencies

- ▶ Massively Parallel Processing with Azure SQL Data Warehouse
- ▶ Data Platform & Analytics Foundational for Data Platform Competency
- ▶ Data Platform & Analytics Foundational for Data Analytics Competency
- ▶ Business Intelligence for Data Analytics

# Team Capabilities



Data Warehousing

20 Years



Data Integration

30 Years



Data Modeling & Analysis

20 Years



Reporting & Dashboards

30 Years



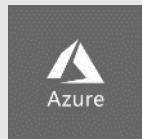
SQL Server (35 Years)

Analysis Services (20 Years)

Integration Services (30 Years)

Reporting Services (30 Years)

Power BI (15 Years)



Azure SQL Database (10 Years)

Azure SQL Data Warehouse (1 Year)

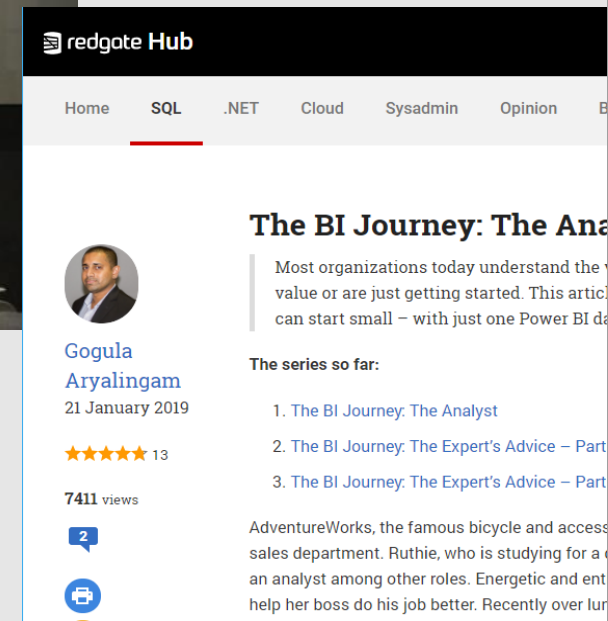
Azure Data Lake (3 Years)

Azure Data Factory (2 Years)

Azure Machine Learning (2 Years)

## Technology community contributors:

Writing, blogging and speaking at local & international events



**F**ORTUDE

**M:** [talk-to-us@fortude.co](mailto:talk-to-us@fortude.co)

**W:** [www.fortude.co](http://www.fortude.co)