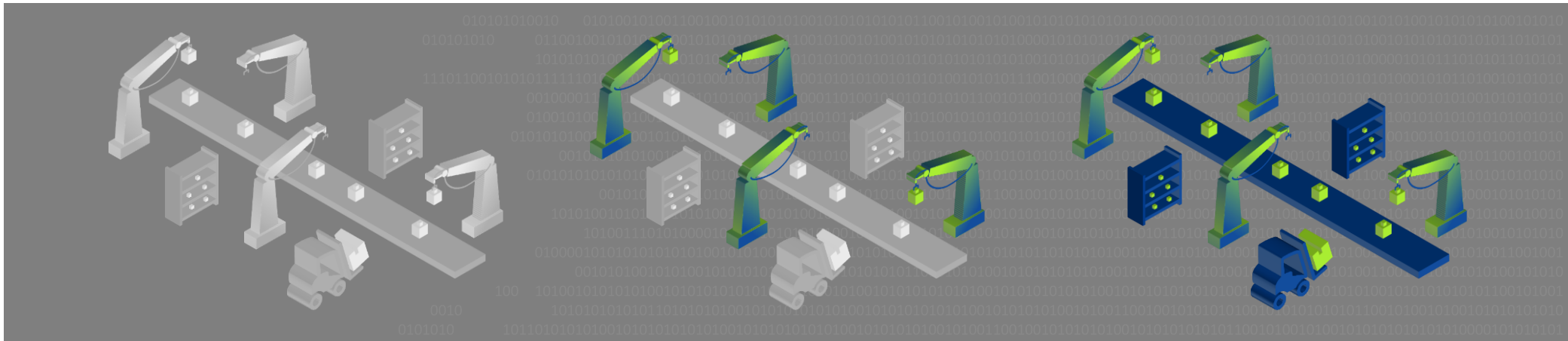


The Cloud-Based Digital Process Twin

The Digital Process Twin connects business processes, devices and systems through horizontal integration to improve process excellence along the entire manufacturing process.



Classical Production

- ERP detached from real-time data
- No condition monitoring
- No horizontal data integration

Digital Device Twin

- Connected machines
- Condition monitoring
- Predictive maintenance

Digital Process Twin

- Smart manufacturing
- Process condition monitoring
- Self-Regulation

Digitalization – The Industry 4.0 Vision