



Power BI



# Power BI Embedded App Template

Power BI Embedded is a robust tool for extending the reach of your content economically. By leveraging our Power BI Embedded App Template, we can get you to V1 on Day 1.



Since 1993, CSG Pro has built modern, scalable software and data solutions.

Our data analytics consultants solve problems and ignite victories. We help you understand your data so you can make smarter business decisions.

We build custom software applications that strengthen your process and your team.

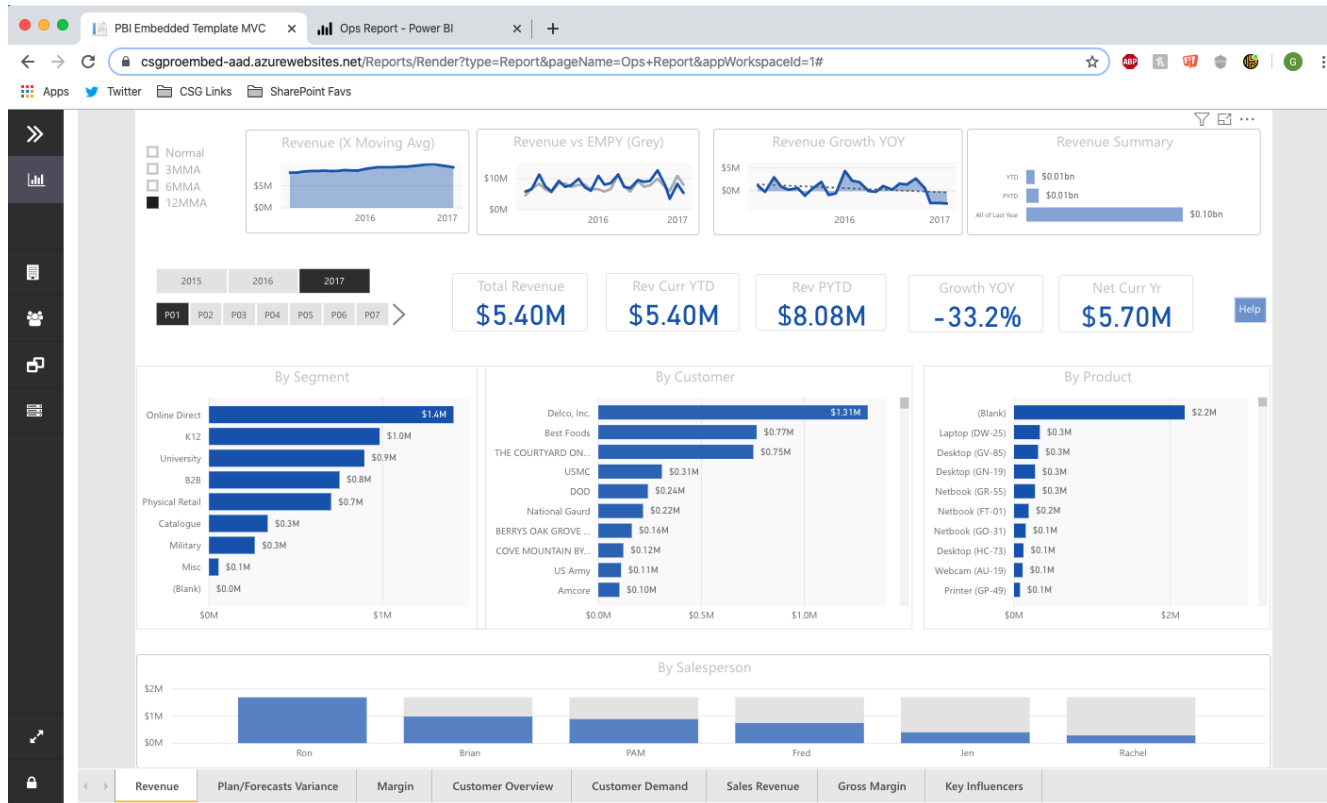


Gold Data Analytics  
Gold Application Development  
Gold Data Platform

WhereScape®  
Gold Partner



# What is the Embedded App Template?



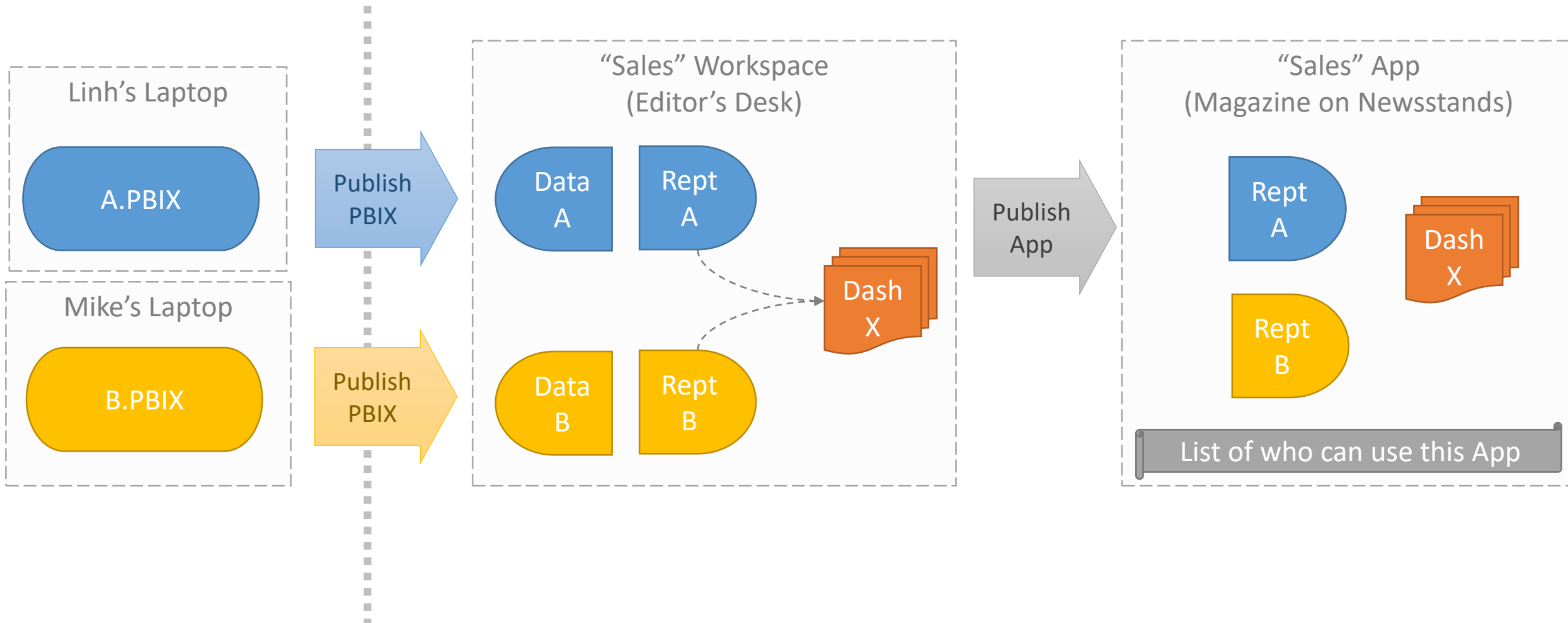
It is a ready-to-install Azure Web application designed for sharing Power BI reports and dashboards

# How Does It Work? In Power BI



## Power BI Desktop

## Power BI Service aka PowerBI.com



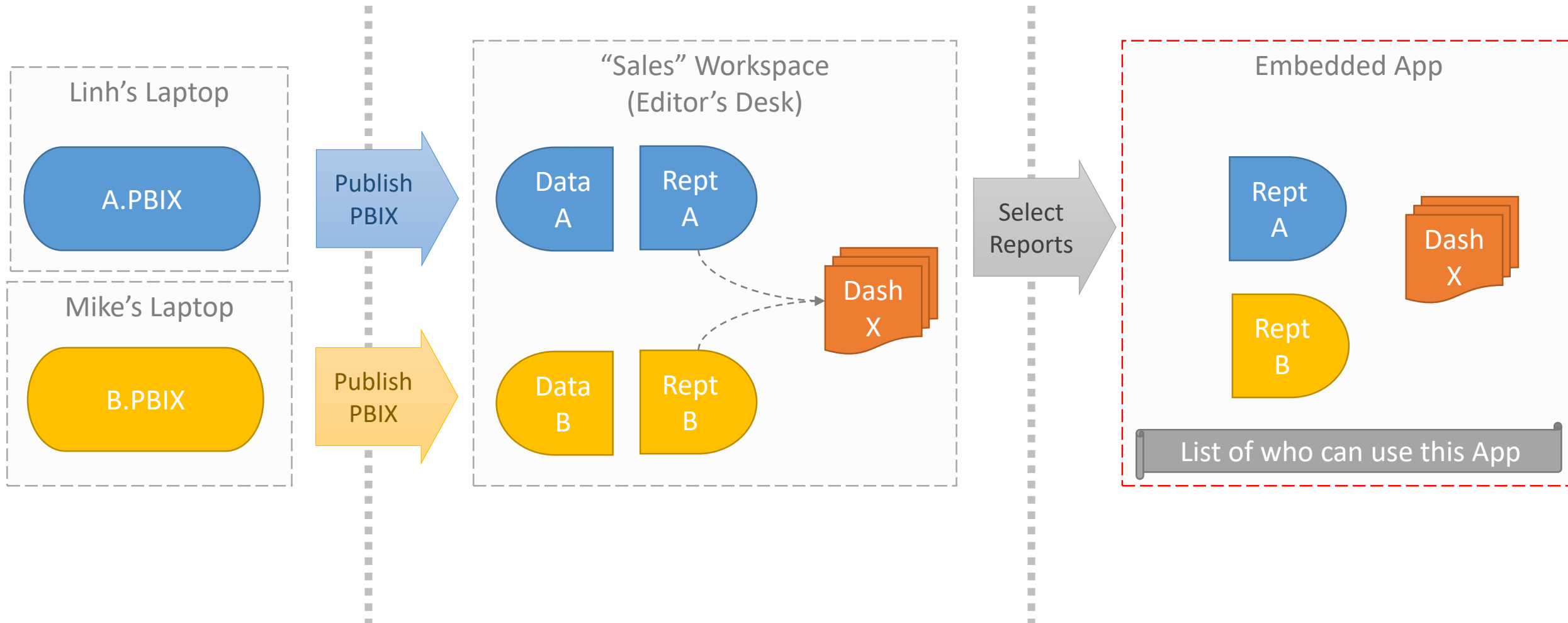
# How Does It Work? Power BI Embedded



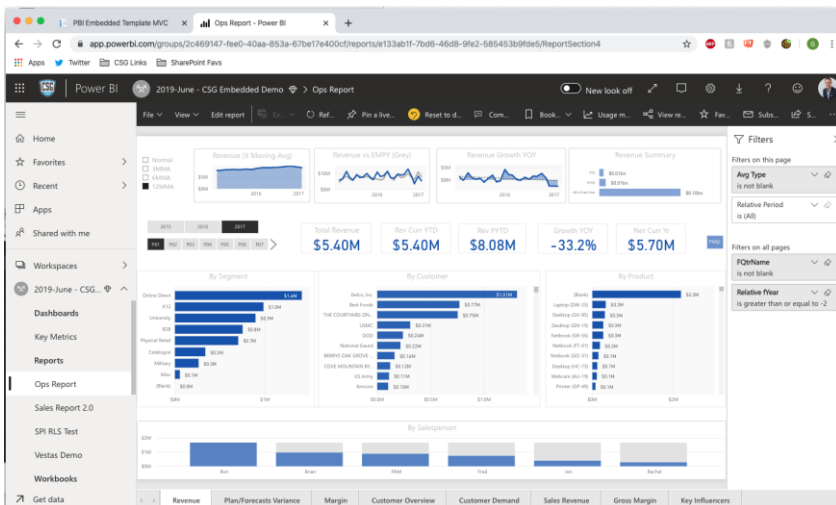
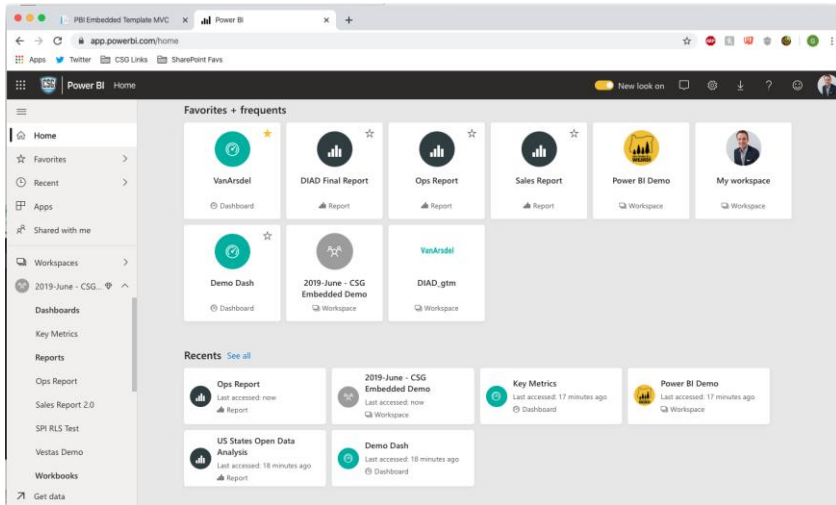
## Power BI Desktop

## PowerBI.com

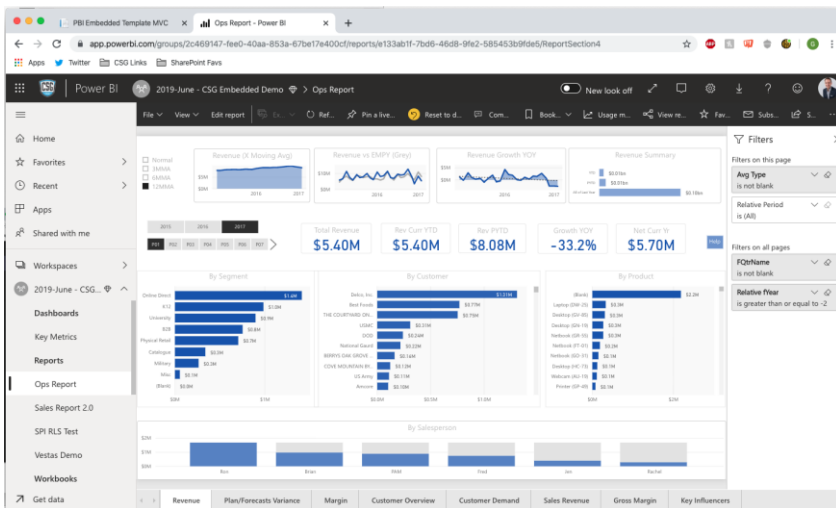
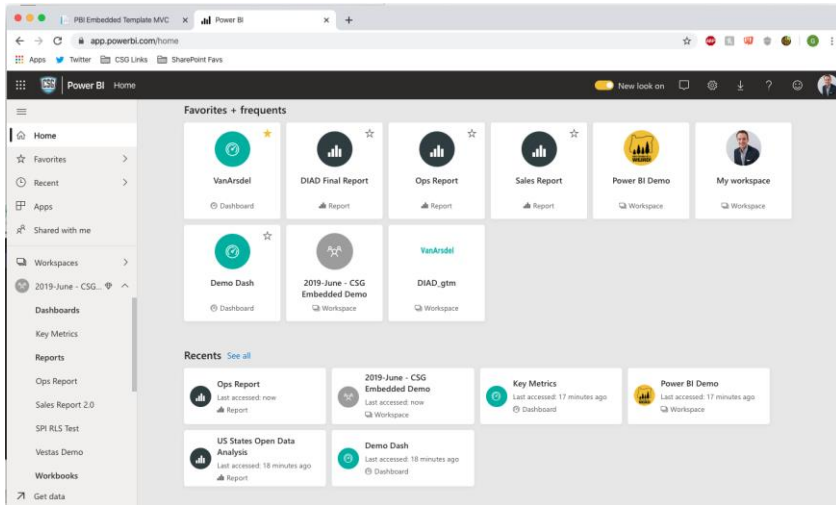
## Extend Your Portal, Product, or Website



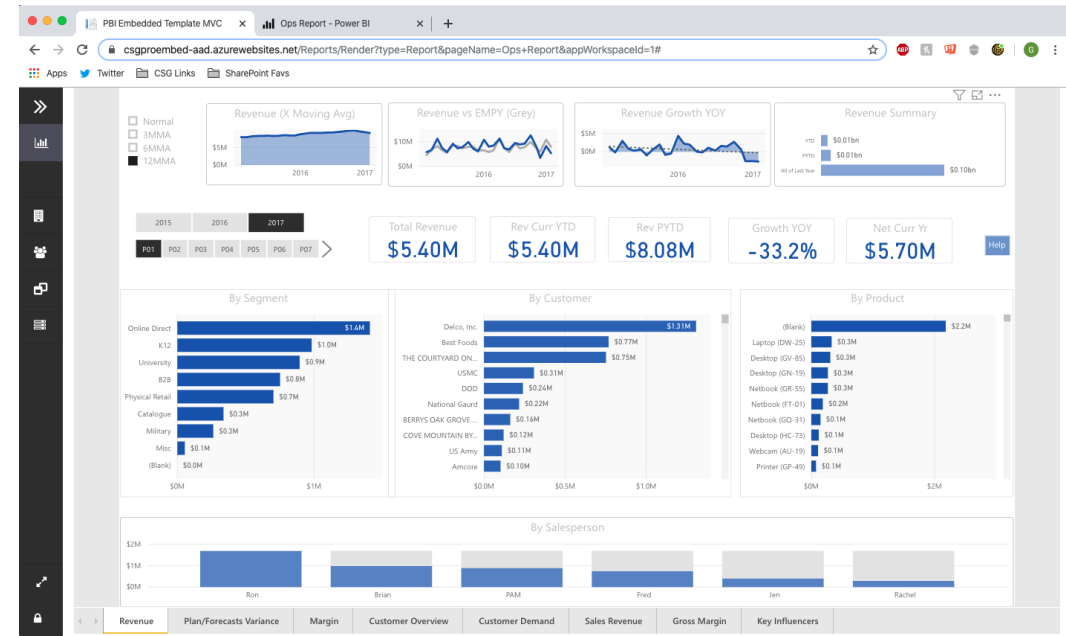
# Use Cases: Simplify User Experience



# Use Cases: Simplify User Experience

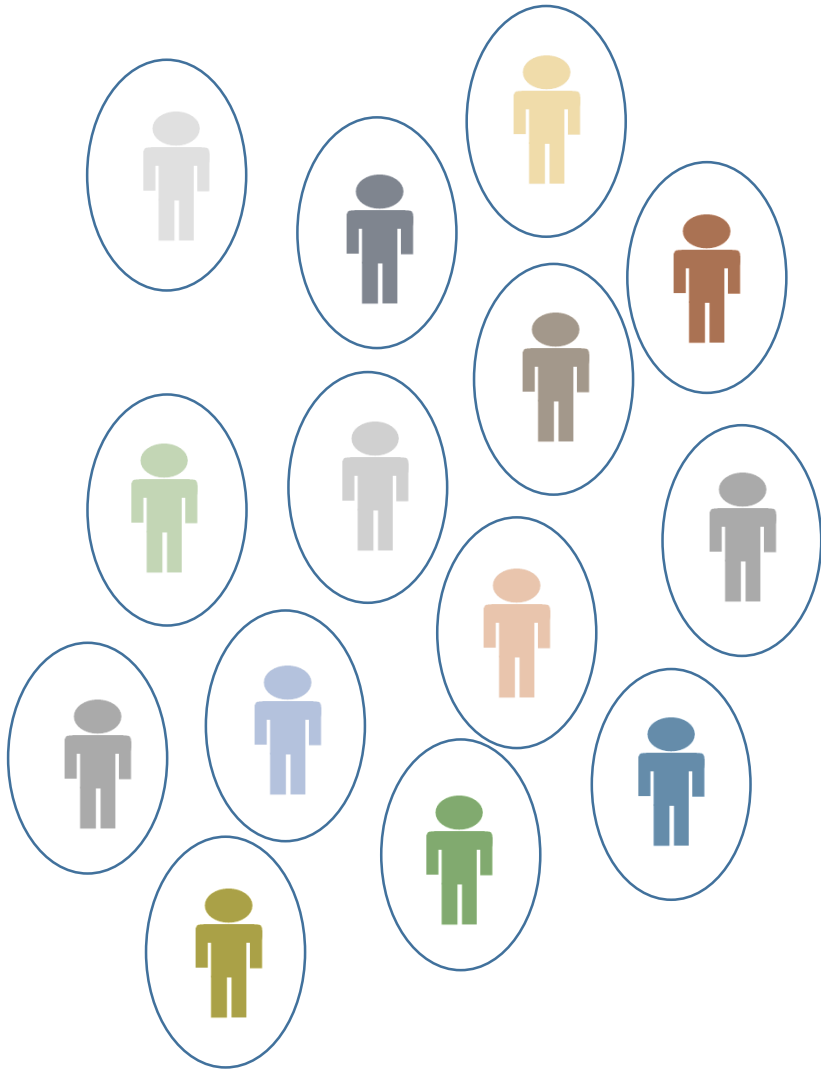


PowerBI.com

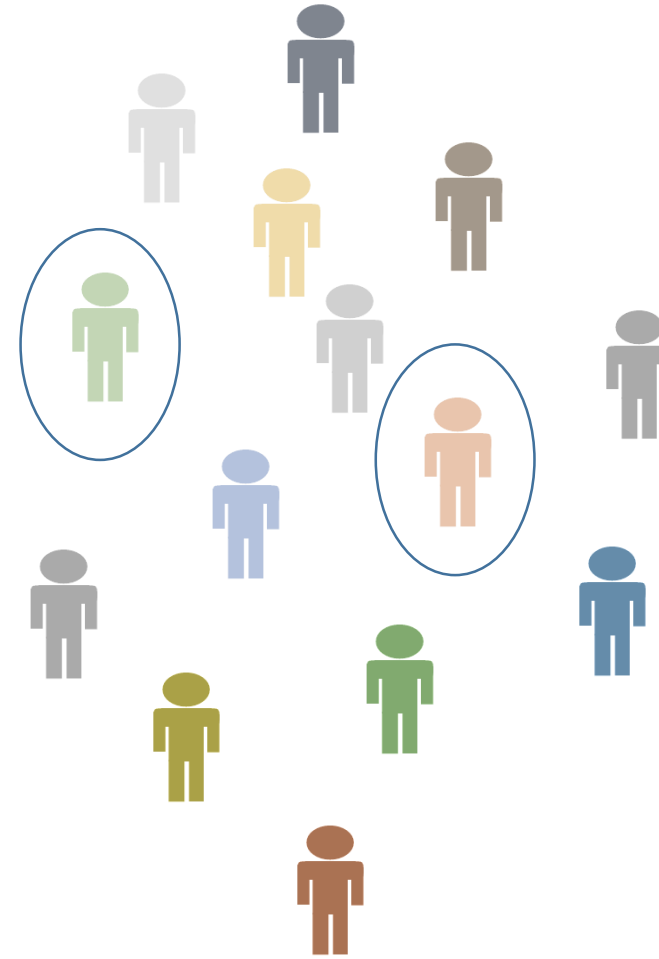


Power BI Embedded App Template

# Use Cases: Simplify License Administration

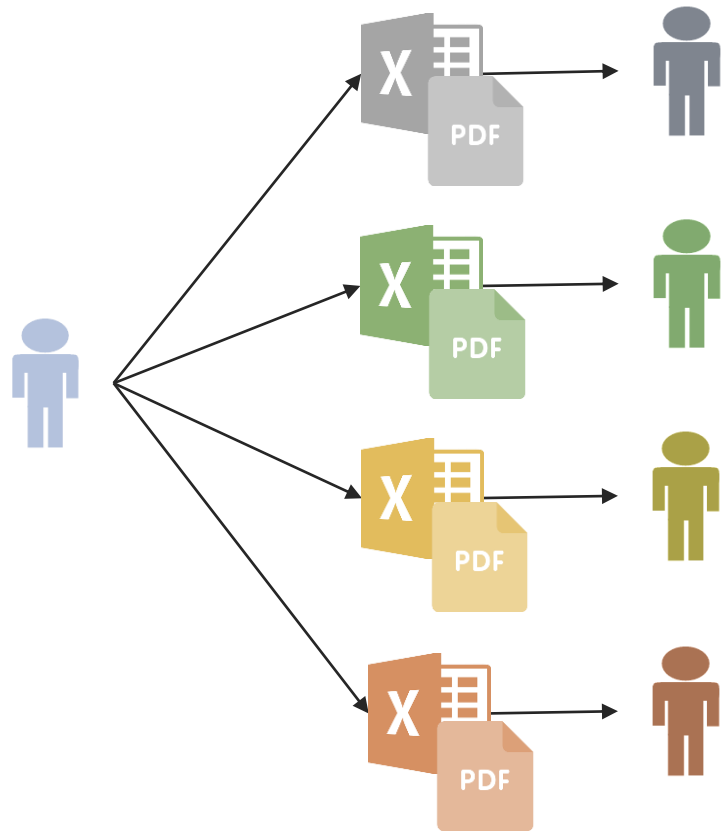


Managing individual licenses for all report consumers



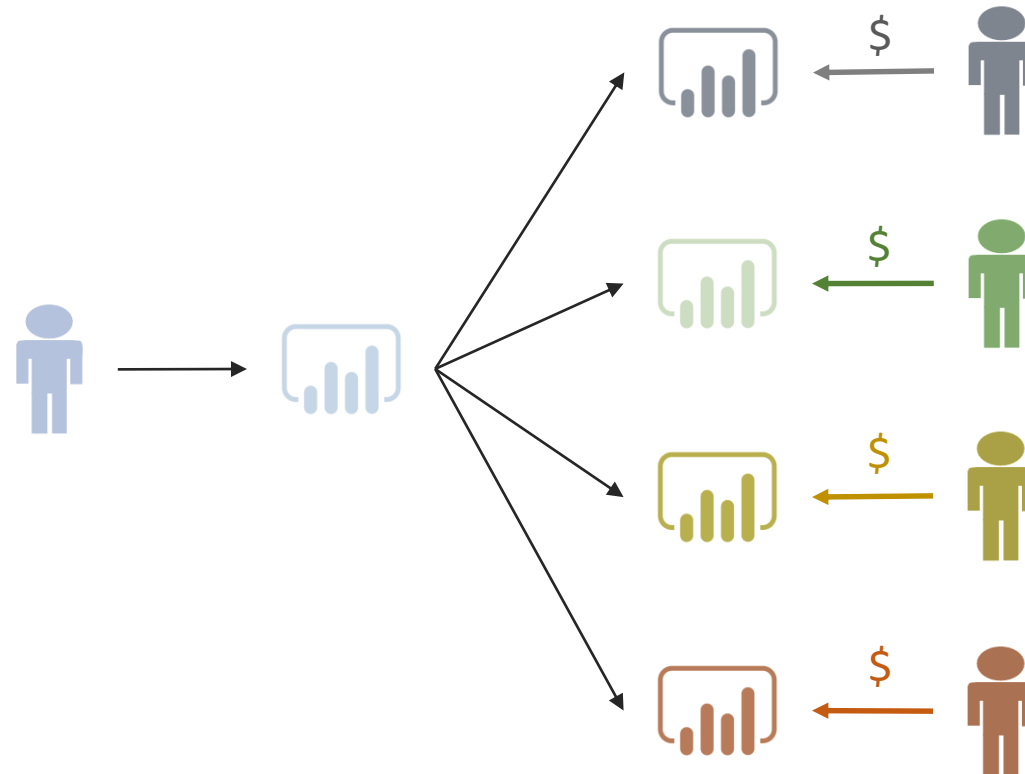
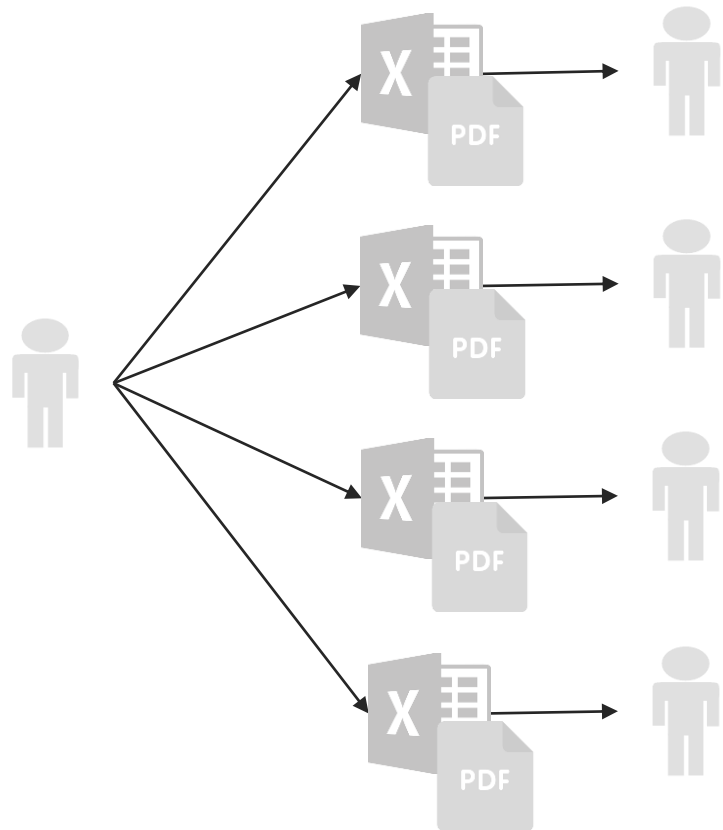
Managing licenses for report builders only





Static Reporting

# Use Cases: Self-Service Reporting



Self-service, interactive reporting

# Use Cases: Optimize Licensing Spend



Product/SKU	Pro Licenses (\$9.99/mo)	Azure Cloud (monthly)	Azure DB (monthly)	Azure App Service (monthly)	Embedded App?	Monthly Spend	Annual Spend
Power BI Pro (500 Pro Licenses)	\$4,995	-	-	-	✗	\$4,995	<b>\$59,940</b>
Power BI Premium P1 (25 Pro Licenses)	\$249.75	\$4,995 min + annual commitment	\$150	\$75	✓	\$5,469.75+	<b>\$65,637+</b>
Power BI Embedded A1 (25 Pro Licenses)	\$249.75	\$735	\$150	\$150	✓	\$1,284.75	<b>\$15,417</b>
Power BI Embedded A2 (25 Pro Licenses)	\$249.75	\$1,465	\$150	\$150	✓	\$5,014.75	<b>\$24,177</b>

- Key Benefits
  - Simplified User Experience
  - Simplify License Administration (internal and external users)
  - Self-Service Reporting (internal and external users)
  - Optimize Licensing Spend
- Let's experience the embedded app template in all of its configurable glory