

# Milliman CRS – Complex Risks Workshop

Cyber, Vendor, Conduct, Operational Risks

## What you will learn



Dynamically map your risks



Validate true risks



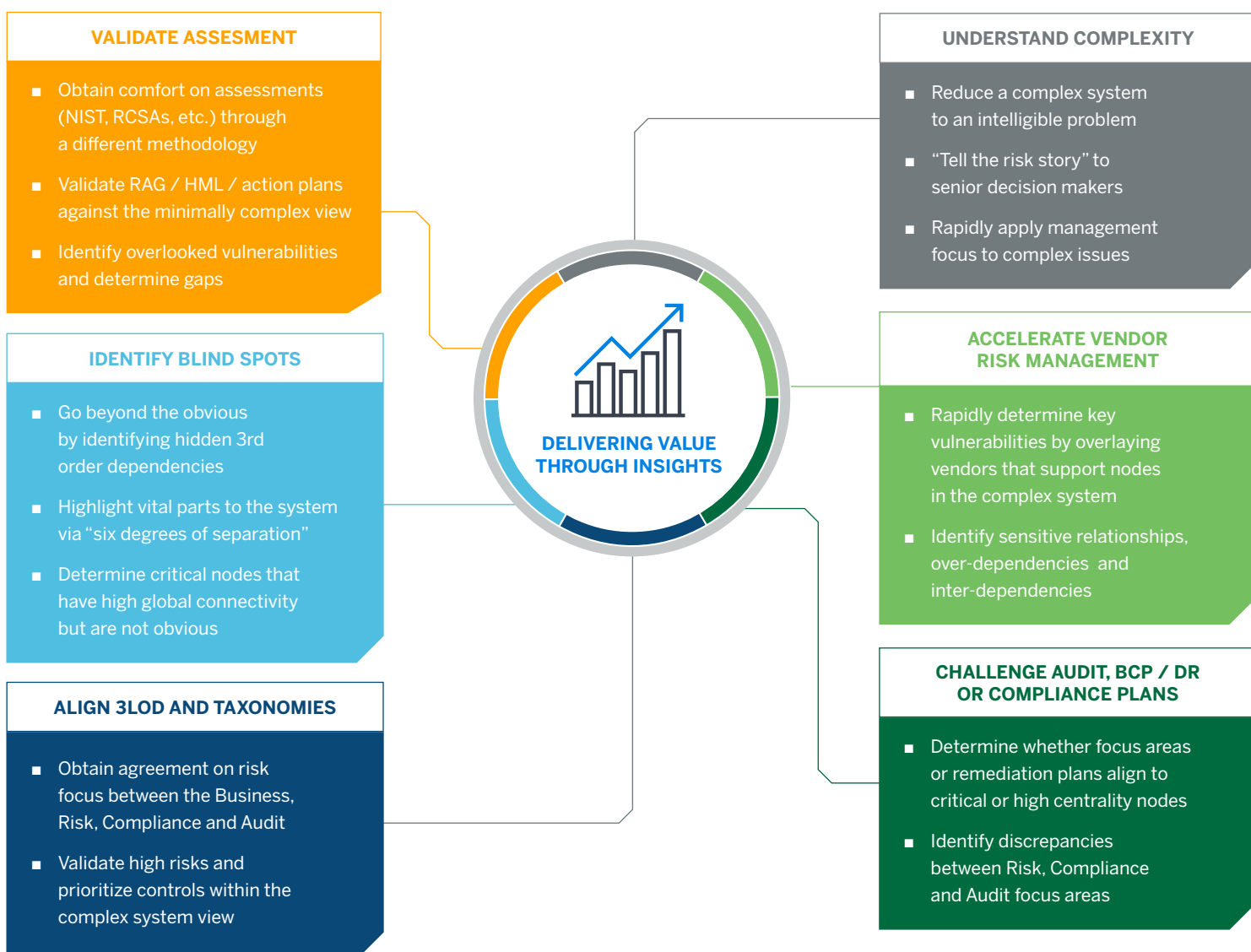
Identify tipping points to future events



Initiate the first step to credible risk quantification

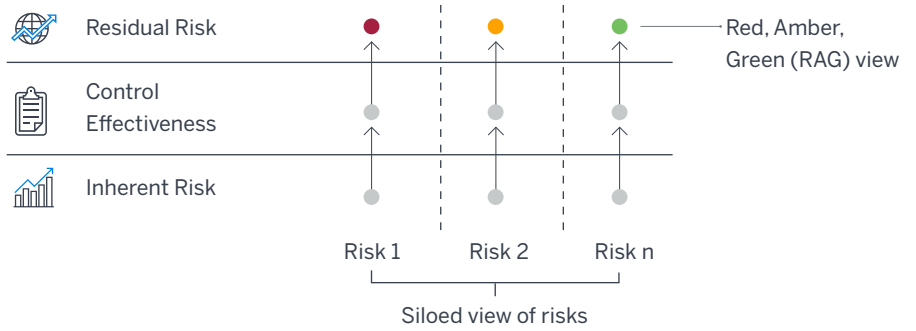
## Cognitive mapping use cases

Creating the cognitive map will “tell your story” while providing insights and validation of critical risk issues before moving to causal modeling.



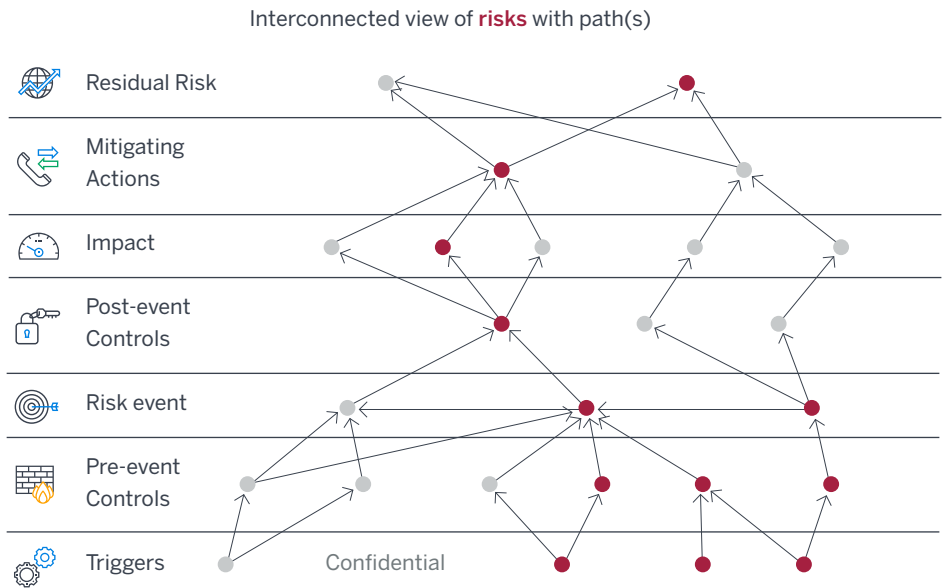
## CLASSIC ASSESSMENT

- Siloed view
- Relative results
- Arithmetic view of cumulative exposure
- Root cause analysis lacking
- Singular path



## CASUAL MODEL

- Network (system) view
- Financial impact and results
- Cumulative view of risk
- Root cause explained
- Multiple paths

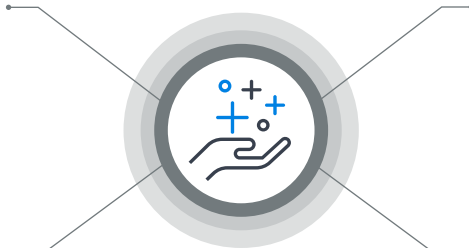


\* Red nodes indicate risk being realized

## Why Milliman?

The only solution that analyzes non-linear relationships, which can expand to consume other operational risks and continue to learn.

Reduce costly staffing requirements and expose better insights



Our approach helps customers displace high priced consultants by reducing staffing requirements, reducing the time onsite, lowering costs, and exposing better insights that can be easily updated.

Replace models that fail and analyze non-linear relationship

## Key contact



### Aaron Swan

Director, Cyber Risk Solutions (CRS)

+1 609 516 7307 (Mobile)

+1 917 923 6180 (Alternative)

[www.milliman.com/cyber](http://www.milliman.com/cyber)

[www.milliman.com/insight/2019/Cyber-risk](http://www.milliman.com/insight/2019/Cyber-risk)