

Consultation Package: Azure Enterprise Landing Zone

Who's it for?

You may have heard Microsoft talk about Azure Enterprise Landing Zone. This is a package for anyone that has reached a blocker preventing them from using Azure at scale and need to implement Azure Enterprise Landing Zone to scale safely and efficiently.

The package in a nutshell...

Providing you with training, processes and security settings to have the confidence and ability to progress your adoption of Azure. Ideal for organisations who are doing small amounts in Azure and want to scale-up.

What will my business get from this?

A Security and governance design document, your Azure subscription configured to agreed standards and a knowledge transfer of deployment process and operational management.

What's included?

At the end of the engagement you will have the processes in place to monitor and manage costs, to optimise your estate in Azure and have the necessary security plans in place to scale-up.

Stage 1: The knowledge transfer

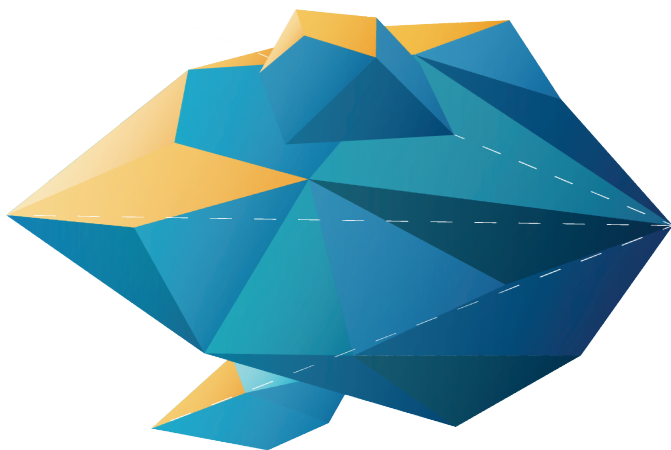
Azure Scaffold introduction, governance best practice, definitions of naming and tags. Align above to customer's business context.

Stage 2: Deployment strategy

Create design document with naming and tagging, set-up subscription, deploy Azure Scaffold (Tags, Resource Groups, access control, Azure Security Centre, automation, Resource Locks, cost management).

Stage 3: Security management

Set-up remote access, configure best practice Network Security Group, back-up, change management automation and monitoring and alerting.



Contact Cloud Direct

To find out more about how we can help your business, contact us on:
0800 0315 966
enquiries@clouddirect.net
www.clouddirect.net

