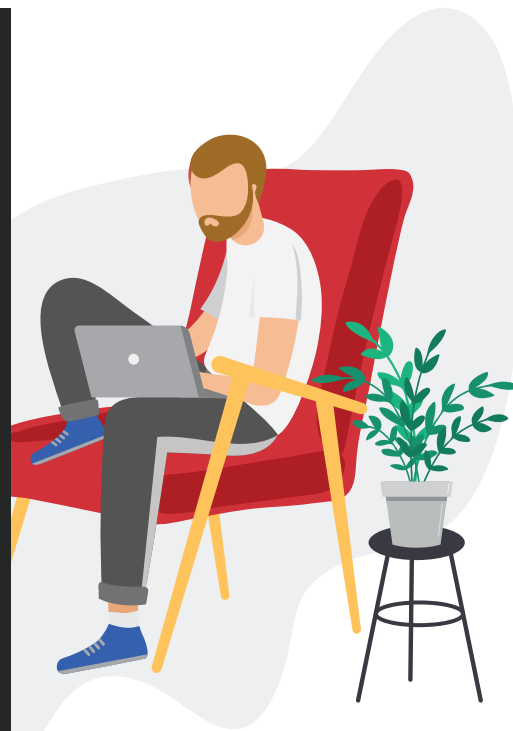


# WINDOWS VIRTUAL DESKTOP (WVD) JUMP START



Many organizations have a requirement to provide a remote working solution for their teams who are now working from home as a result of the COVID-19 pandemic. WVD Jump Start is designed to provide rapid establishment of a virtual desktop environment to ensure rich applications can be easily accessed by remote workers. Working with your chosen partner we can enable a WVD deployment in days.

Windows Virtual Desktop is a comprehensive desktop and app virtualization service running in the cloud. WVD Jump Start provides a scalable Virtual Desktop Infrastructure (VDI) delivering simplified management, multi-session Windows 10, optimizations for Office 365 ProPlus, and support for Remote Desktop Services (RDS) environments all deployed within days.



## WVD CUSTOMER PROFILE

Organizations needing to rapidly deliver a secure, reliable and scalable remote desktop solution whilst ensuring a consistent and reliable desktop experience. Typical applicable scenarios:

- No current VDI solution for remote access
- Little to no burst capacity for existing VDI solution (provides the ability to expand beyond an existing VDI solution)
- Core dependency on Windows 7 (only supported solution)
- Customers looking at Disaster Recovery (DR) scenarios for desktops and data

## WHAT ARE THE REQUIREMENTS FOR WVD?

To take advantage of the Jump Start for WVD we need to ensure you have the following:

- WVD license entitlements
  - » Microsoft 365 E3, E5, A3, A5, F1, Business
  - » Windows E3, E5, A3, A5
  - » Windows 10 Enterprise Subscription
- Azure subscription
- Existing Azure AD Connect deployment
- Customers with no Azure subscription can create a PAYG subscription (useful for disaster recovery, bursting and/or limited use)

## WINDOWS VIRTUAL DESKTOP (WVD) JUMP START

This offering is specific to WVD to ensure the balance between full virtual desktops and rich applications is catered for. We call this, Jump Start for WVD and the service includes:

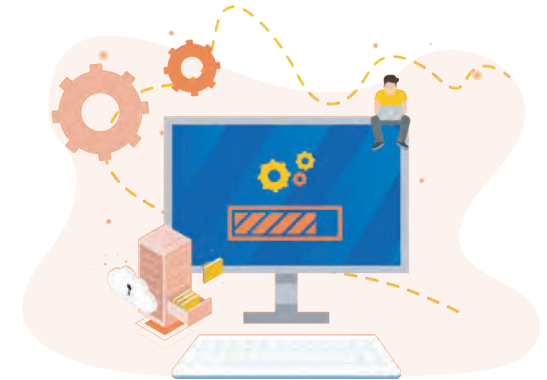
- **Design thinking workshop including:**
  - » Solution design overview – creating the building blocks for success
  - » Overview of WVD components including Azure environment, virtual networks, Azure AD Domain Services, storage, VM update management etc.
  - » Overview of the provisioning process
  - » Overview of solution scaling (Bursting to more desktops or applications)
  - » Understanding or defining user personas to align to desktop and applications requirements
  - » Process for Azure cost management and reporting
  - » Explore support requirements
  - » Understand any requirements for management of services of solutions
  - » Overview of optional value add services
- **WVD Jump Start Deployment**
  - » Stand up a self-contained Azure environment (virtual network, Azure AD Domain Services, storage, VM update management, inventory) in a single region
  - » Stand up two (2) WVD host pools – personal desktops (i.e. persistent) on Windows 10 and/or pooled on Windows 10 multi-session

### » The Image will include:

- » Windows 10 Enterprise
- » Microsoft Visual C++ Redistributables / .NET Framework
- » Microsoft FSLogix Agent (FSLogix Containers)
- » Microsoft Edge
- » Microsoft Office 365 ProPlus
- » Microsoft Teams
- » Microsoft OneDrive
- » Adobe Acrobat Reader DC
- » Implement VM scaling for pooled desktop
- » Delivery of two (2) client provided compatible pre-packaged applications

### • Assumptions

- » Application packaging
- » Azure AD Connect implementation



If you are looking to get WVD configured and would like to take advantage of our WVD Jump Start Service, contact **[sales@choicesolutions.com](mailto:sales@choicesolutions.com)**.