

AZURESMART by Motifworks

On-Premises MySQL to Azure MySQL Migration

Migrate On-premise MySQL to Azure MySQL database

- Do you have existing on premises MySQL databases that you are looking to azure MySQL platform?
- Are you looking to reduce cost while being more flexible at the same time?
- Do you want to easily migrate using various options from On-Premises to Azure MySQL databases and reduce cost and time required to complete migration activity.

Our MySQL expert team can help you to migrate On-Premises MySQL databases to Azure MySQL platform. This will help you to complete migration smoothly and successfully.



Assess Existing MySQL databases

We help you identify which databases are fit and can be migrated to Azure

After review of MySQL databases architecture, usage and criticality, we provide an assessments and recommended strategy

Planning of Migration

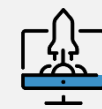
Discuss and plan for all On-Premises MySQL databases migration to Azure MySQL databases, start using Azure environment.

Azure MySQL database provides a cloud azure platform for modernizing your existing applications and running them in the cloud or on-premises.

WHAT YOU GAIN



Analysis of On-Premises databases



Migration Planning



Azure Cost Projections and savings analysis



Automated Deployment package for deployments in Azure

Migration and Post migration activity

Complete the On-Premises to Azure Migration activities, perform post migration activities that will help you to monitor resources, queries and setup alerts.

This will help you to know MySQL databases resource utilization.

We take your migration activity from start to end. This will help your organization to complete migration assessment, planning of migration, actual migration activity to Azure MySQL databases, Post migration activities i.e. alerts and monitoring setup. This helps to complete migration without any issues and on time completion record.

DIRECTOR – BUSINESS APPLICATIONS, LARGE Health Care FIRM

HOW IT WORKS

Your On-Premise database



- On –premises databases assessment
- Review of assessment report
- Discuss migration plan
- Finalize migration

Your Cloud Strategy



- What are your business objectives?
- What are your pain-points?
- Database features supports in azure Mysql



Motifworks Azure Migration activity

- Azure MySQL Architecture design
- Setup Azure environment
- Premigration activity
- Create db server and required databases
- Setup security
- Actual migration
- Post Migration scripts



Migration

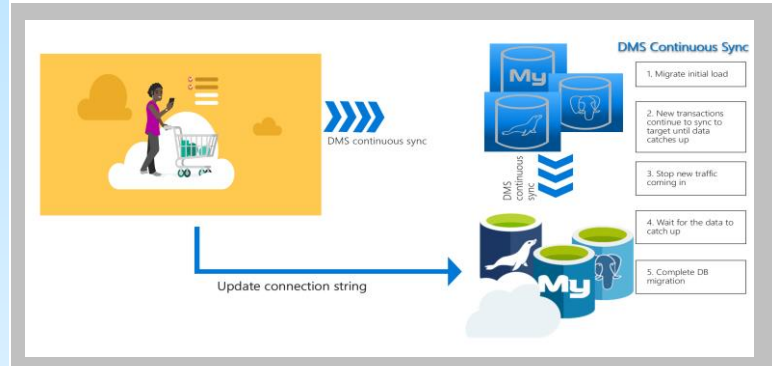
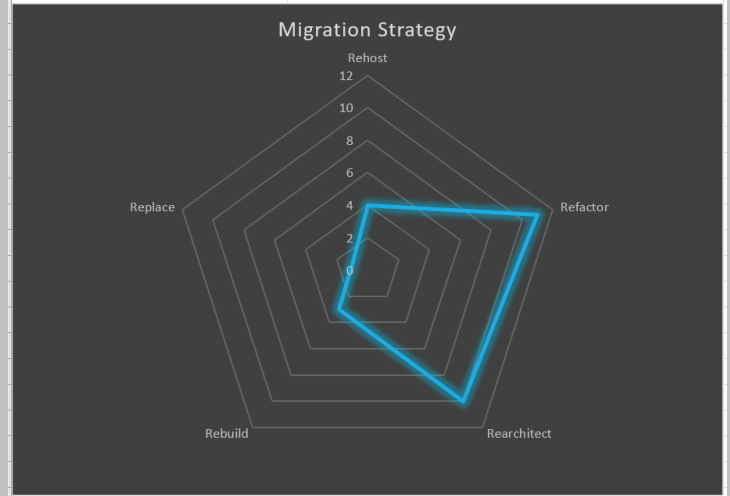


- Change application connections to azure Mysql databases
- Test connectivity and features

Configuration Change and Validation

SAMPLE OUTPUT

Application Name	eRemit
Description	Online Web portal for remitting hours and payment electronically
Line of Business	HR, Finance, Accounting
Innovation Driver	Originally created in 2008, the goal is make it more scalable and elastic. Streamline deployment in cloud
Daily users	250 to 300
Average number of concurrent us	15
Expected traffic	75 Gpbs
Requests per second	15
Amount of Memory needed	2 GB



MOTIFWORKS SMART AZURE MYSQL MIGRATION

Our promise to you

Migration of on-premises MySQL databases to azure with cost effective and best performance in azure.

\$15,000 VALUE

2 weeks

You may be eligible to receive funding for this engagement through Microsoft funded programs

ABOUT MOTIFWORKS

At Motifworks, we are AZURESMART. We are one of the fastest-growing cloud solutions providers, specializing in Cloud Adoption, Application Innovation, and Effective Data Strategies. Our passion is to empower you to accelerate your digital transformation initiatives using the Microsoft Azure cloud. We're here to simplify your path to explore what's possible.