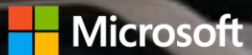




# Upgrade to Microsoft Power Platform: 4-Wk Implementation



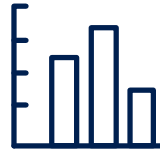
# Microsoft Power Platform

One connected platform that empowers everyone to innovate



---

Build web and mobile  
apps and workflows  
fast and  
without limits



---

Gain insights from  
your data regardless  
of where it lives

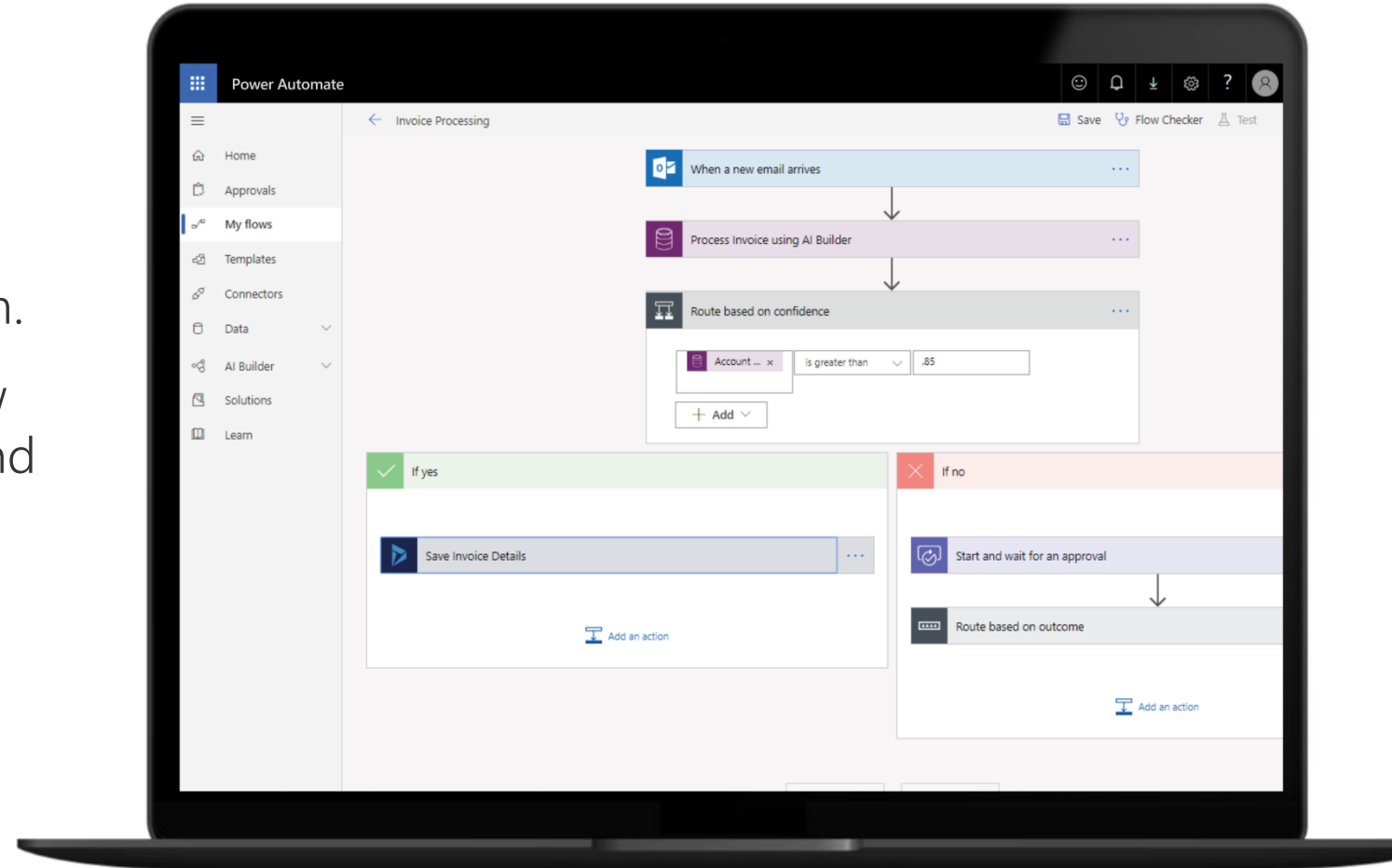


---

Enterprise-ready  
security and  
governance

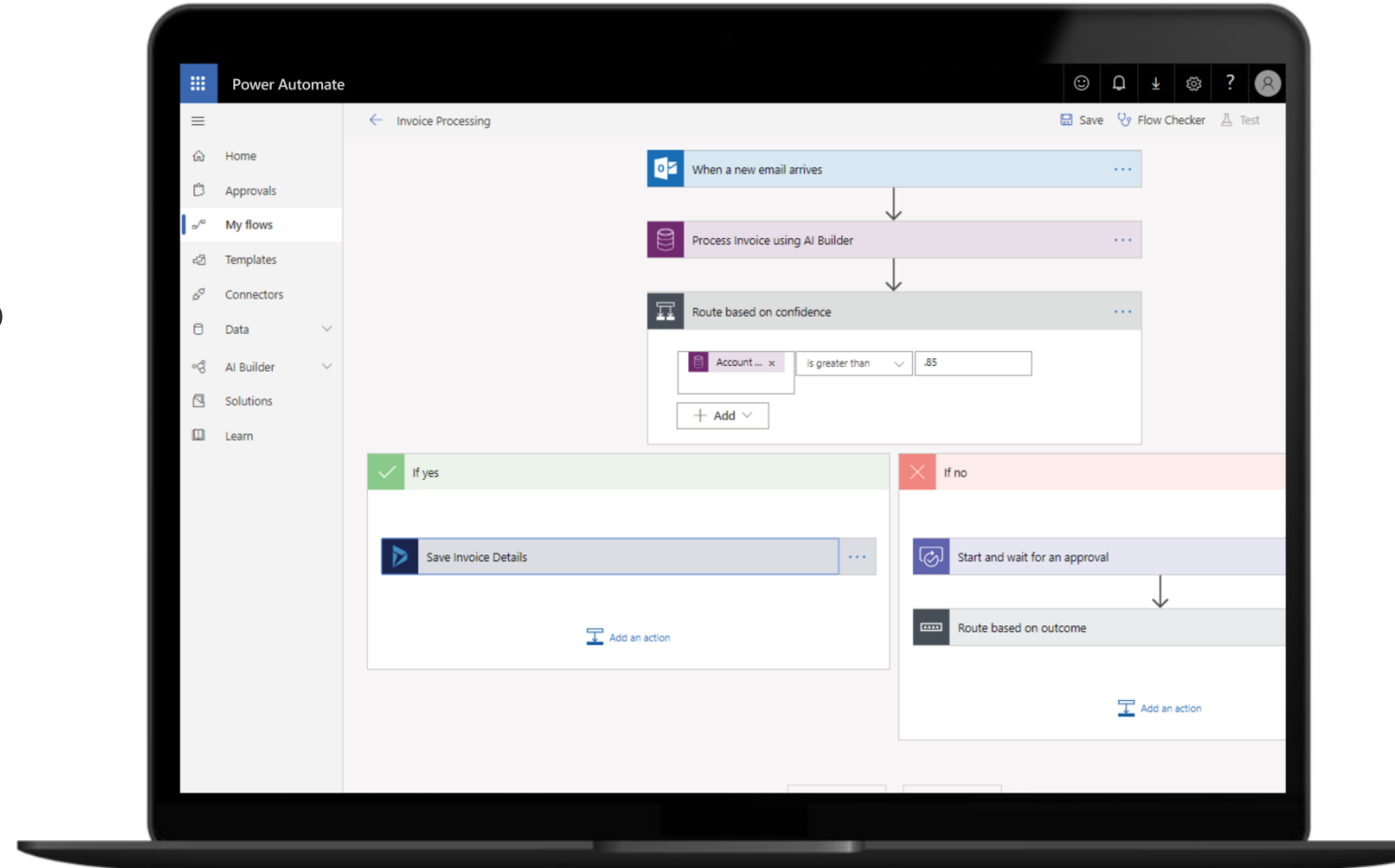
# Agenda

- Close analysis of organization & understanding the business scope.
- We rapidly upgrade your current SharePoint workflow to Power Platform.
- Rapidly evaluate your current workflow and replace it with Power Automate and Power Apps.



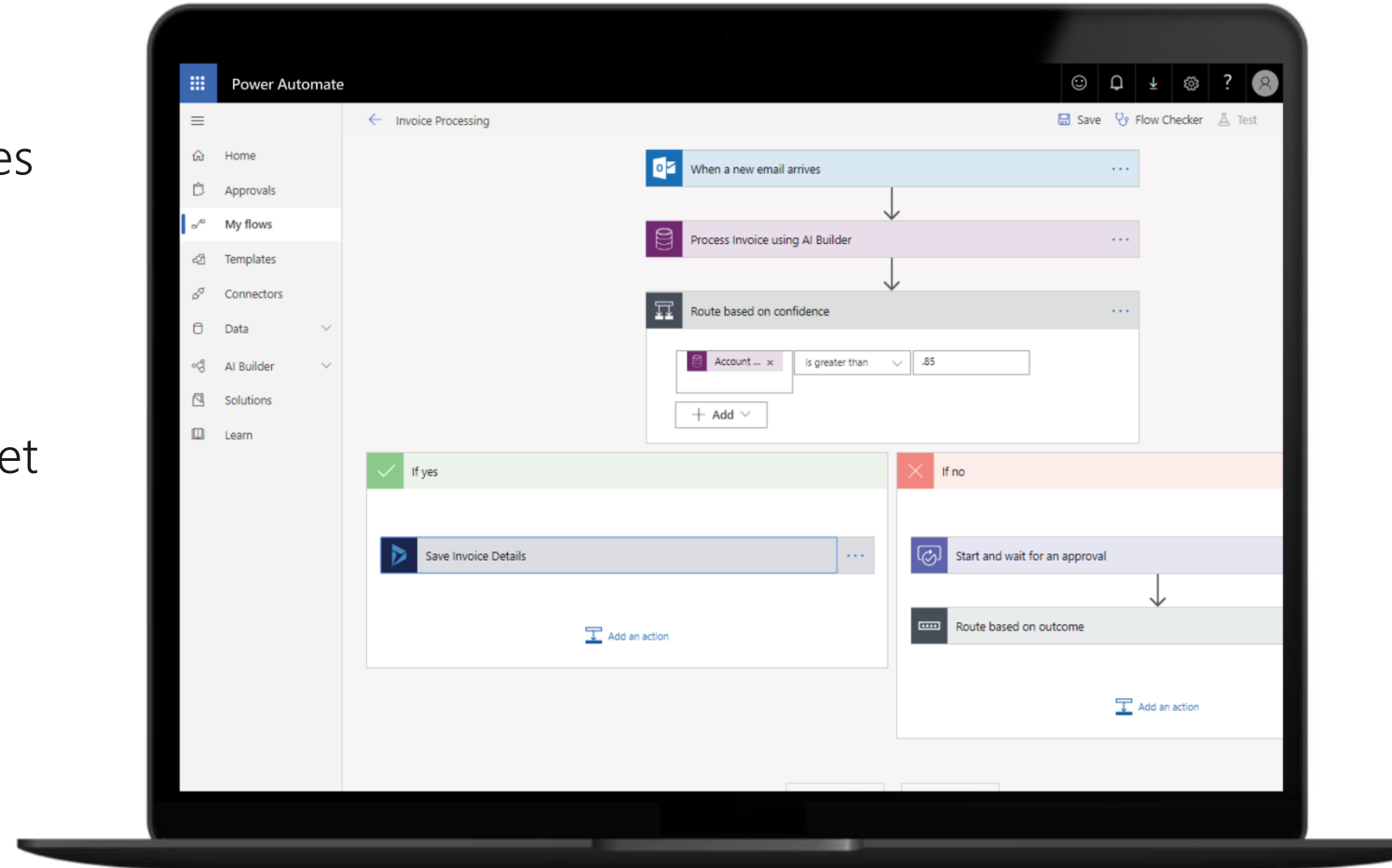
# Deliverables

- Weekly project overview and plan.
- Data conversion assessment and plan
- Identify which current SharePoint workflow will work for you and have to upgrade to Power Platform.
- Develop an effective strategic implementation plan for next stage.
- SharePoint Workflow replacement to Power Automate and Power App
- Go-live review and post go-live check and solution training



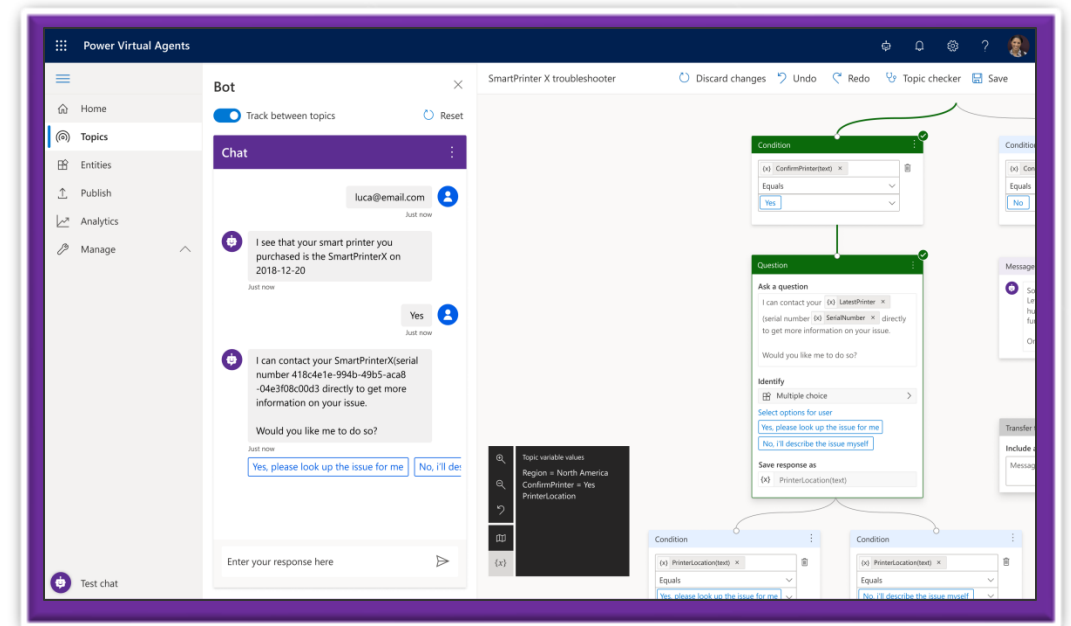
# Automate and integrate business processes with Power Automate

- Automate and model business processes across your apps and services
- From simple automations to advanced scenarios with branches, loops, and more
- Trigger actions, grant approvals, and get notifications right where you work
- Automate legacy, on-prem and cloud-based applications and services



# Build powerful virtual agents with Power Virtual Agents

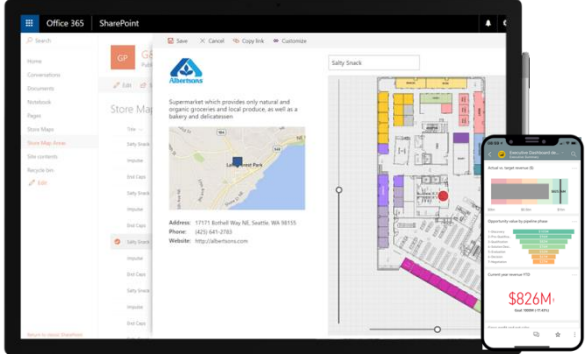
- Enable subject matter experts to easily create powerful virtual agents using a guided, no-code graphical interface—all without the need for data scientists or developers.
- Enable the virtual agent to take action on the customer's behalf. Easily integrate your virtual agent with hundreds of services and systems out of the box or create custom workflows.
- Keep an eye on how your virtual agent is performing by using conversational metrics and dashboards. Get in-depth AI-driven insights to improve bot performance.



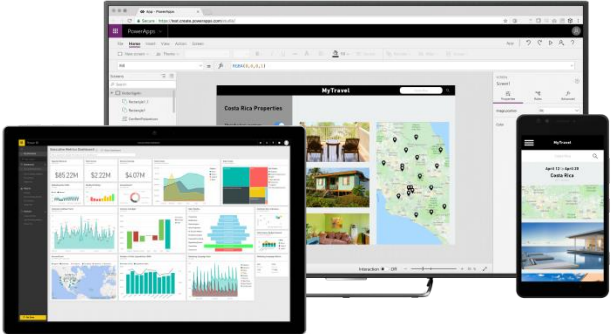
# Customize, extend, and build all the apps you need

Seamless Dynamics 365, Office 365, and Azure integration along with connectors to more than 200 data sources

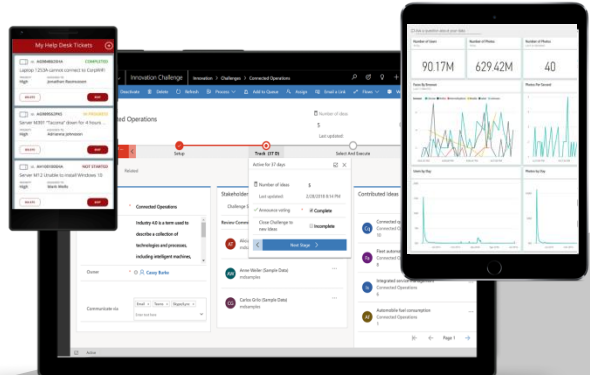
Tailor out-of-the-box solutions, embedded forms and dashboards



Highly customized task- and role-based apps



Immersive, end-to-end solutions

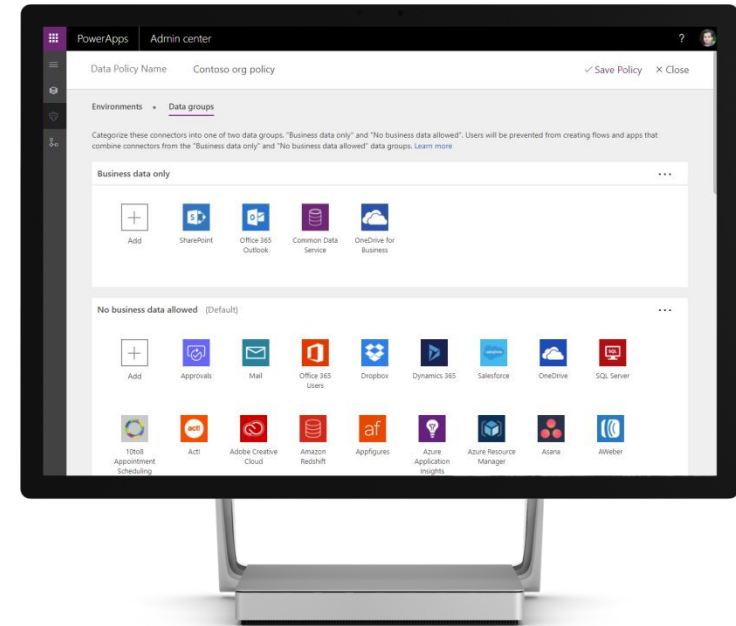


SOPHISTICATION



# Enterprise-grade management and control

- All identity is managed through Azure Active Directory, enabling rich policies and multi-factor authentication
- Admin Center providing full audit logs, usage analytics, data loss prevention, security and data management
- Centrally manage all your apps, first and third party, deployed across your organization



Enterprise-grade

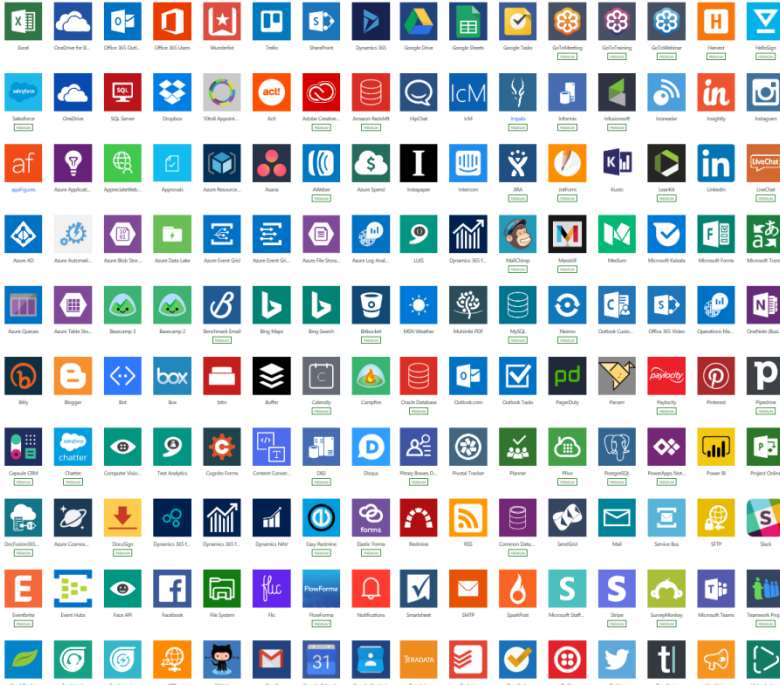
Cloud and on-premises connectivity

Pro-developer extensibility



# Cloud and on-premises connectivity

- Built-in connectivity to over 270+ cloud services, files, databases, web APIs, etc.
- Seamless hybrid connectivity to on-premises systems via the On-Premises Data Gateway
- Build custom connectors for everyone to leverage



Enterprise-grade

Cloud and on-premises connectivity

Pro-developer extensibility

# Power Apps customer momentum



Healthcare



Finance/Banking



Manufacturing



Retail/Distribution



Public sector



Technology Services



Food & Beverage



3.0 M+

monthly active users

362%

Return on investment over 3-year term

Source: The Total Economic Impact™ Of Power Apps And Power Automate, a commissioned study conducted by Forrester Consulting on behalf of Microsoft, June 2018

It's easy to  
get started...

**SA Technologies**

(408) 833-6257

sales@satechglobal.com

3031 Tisch Way, 110 Plaza West

San Jose, CA 95128

<https://www.satechglobal.com/>





Thank You