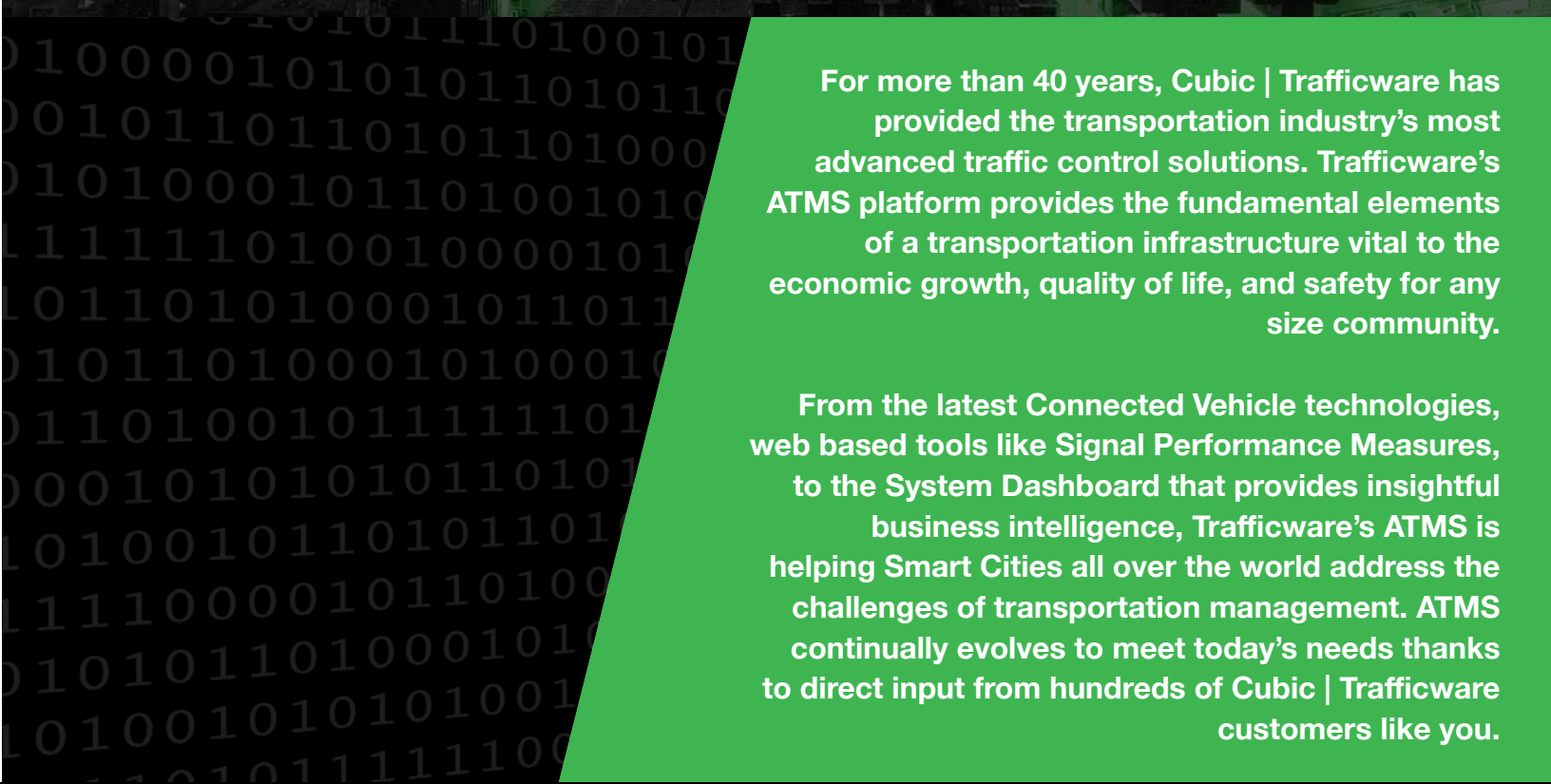




# Advanced Transportation Management System (ATMS)

CUBIC | **Trafficware**



For more than 40 years, Cubic | Trafficware has provided the transportation industry's most advanced traffic control solutions. Trafficware's ATMS platform provides the fundamental elements of a transportation infrastructure vital to the economic growth, quality of life, and safety for any size community.

From the latest Connected Vehicle technologies, web based tools like Signal Performance Measures, to the System Dashboard that provides insightful business intelligence, Trafficware's ATMS is helping Smart Cities all over the world address the challenges of transportation management. ATMS continually evolves to meet today's needs thanks to direct input from hundreds of Cubic | Trafficware customers like you.



# Advanced Transportation Management System (ATMS)

ATMS provides a clear graphical user interface (GUI), intuitive controls and new features that maximize agency productivity. Our system implements industry standards such as NTCIP and NEMA and is designed to specifications published by FHWA, ITE, IMSA, Caltrans and other industry leaders.

## Features & Capabilities

### Alarms Dashboard

The ATMS Alarms Dashboard provides users with critical system information at-a-glance using business intelligence analytics tools. Its seamless, dynamic, and interactive system monitoring allows Traffic Engineers to identify potential reliability issues and focus on improvements to traffic flow.

### Clear Interface

ATMS is based on Microsoft standards and provides users with a clear, familiar, and intuitive interface using “ribbon” controls for all system commands and functions. Additionally, the ATMS interface has an array of customization options for power users.

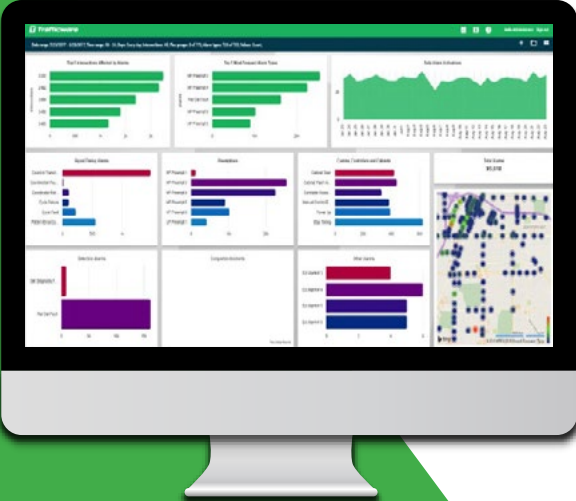
### Map View

The ATMS Map View provides users with current system operating conditions using an intuitive dashboard. The Map View graphically illustrates system status, activity, devices and performance. The Map View not only indicates traffic signal status, but also shows congestion levels (MOEs), live camera feeds, dynamic message signs (DMS), roadway closures and more.

### Synchro Integration

ATMS integrates with Cubic | Trafficware’s Synchro software, allowing users to dramatically improve productivity while working between platforms and allowing collaboration with colleagues around the world

Alarms Dashboard



## Options & Add-ons

### SynchroGreen® Adaptive Traffic Control

SynchroGreen by Trafficware is the industry’s premier Real-time Adaptive Traffic Signal Control Technology. SynchroGreen maximizes the use of available roadway capacity by considering sidestreet and pedestrian traffic and mainline traffic, reducing travel time, delays, and stops for all road users while simultaneously decreasing fuel consumption and emissions.

### Emergency Responder

The Emergency Responder Module integrates with your computer aided dispatch system (CAD) to provide priority traffic signal service during signal coordination for emergency vehicles resulting in safer and quicker response times for emergency vehicles.

### Tidal Wave

TidalWave is a live streaming traffic information service powered by machine-learning and edge computing. Tidal Wave delivers predictive learning applications for connected vehicles, smart cities, smart intersections, and “Internet of Things” (IoT) markets.

### Signal Performance Measures (SPM)

Signal Performance Measures allows users to log detailed traffic controller information like detector actuations, phase state, split changes, and reasons for termination in a tenth of a second. This cloud-based module includes customizable reports including Purdue Coordination Diagrams (PCD), Phase Termination Charts, and more.



## Technology today, driving the cities of tomorrow.

Smart City applications require data provided by signal controllers, sensors, and central management software, whether through DSRC or cellular technologies. ATMS provides the critical information auto manufacturers require for Connected and Autonomous Vehicle applications. Cubic | Trafficware’s Connected Vehicle application is deployed in more than 3,300 intersections worldwide and continues to grow daily.



# Additional Modules

---

## Traffic Engineering Management Software (TEAMS)

TEAMS is a full-featured asset management system that allows users to easily locate and log information about traffic equipment inventory. When integrated with Trafficware's ATMS, users can associate equipment with trouble reports, service records, and maintenance records, providing valuable insight for budgeting and planning.

## PODNexus

PODNexus is a web-based interface that allows users to collect high resolution data like Volume, Occupancy, and Speed reports as well as System Health reports that the status of a Pod Detection System.

## Center-to-Center

Center-to-Center enables data exchange between ATMS and an external management center and can be used to support Integrated Corridor Management applications.

## Advanced Communications

The Advanced Communications Module expands on an agency's capabilities and visibility over an extended network of controllers.

## UPS

The UPS Module integrates with Uninterruptible Power Supply (UPS) units allowing users to access the device status, alarms, notifications, and reports.

## StreetSync

StreetSync allows users to wirelessly access signal controllers from the comfort and safety of their vehicle. Users can sync data with the agency's ATMS central server, even when the controller is not connected to the traffic signal network, allowing agencies to maintain controller database integrity.

## Transit Signal Priority (TSP)

TSP facilitates the movement of transit vehicles by automatically adjusting signal timings to minimize transit vehicle stops and delay while minimizing the impact on normal traffic operations.

## BlueTOAD

BlueTOAD allows users to collect and access valuable data like travel times, speed, and origin destination, through ATMS interface.

## Disaster Recovery Module

The Disaster Recovery Module provides a secondary server that will restore ATMS data and traffic operations in the event that the primary server fails.

## Changeable Message Signs

This module allows users to communicate between ATMS and third party vendor CCTV systems.

## CCTV

This module allows users to communicate between ATMS and third party vendor CCTV systems.

# Contact Us Today

Learn more about Trafficware's ATMS features and capabilities at [trafficware.com/central-management.html](http://trafficware.com/central-management.html).

+1 281.240.7233

[trafficwaresales@cubic.com](mailto:trafficwaresales@cubic.com)