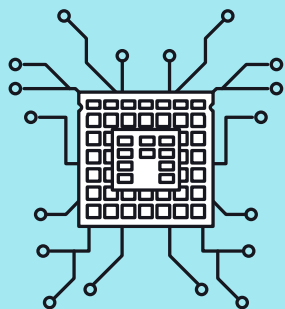


WE STRESS THE MOST CURRENT AND PROVEN INNOVATIONS



WHO WE ARE

DoctorHelper® The Ultimate EHR powered by the most sophisticated Microsoft® platforms is here to provide the health care industry with the tool it needed. Built with the latest technologies and knowing the importance of interoperability and high security standards, we are offering the solution that the industry was waiting for.

Having all the business processes management and the EHR together in the same platform is now possible.

CONTACT US

1221 Brickell Avenue Suite
900 Miami, FL 33131 USA

+1 (786) 598-2433
www.doctorhelper.com

DOCTORHELPER THE ULTIMATE EHR

POWERED BY  Microsoft

Providing your organization with
the best software for offering
the highest quality of care to
your patients





MEDICAL MANAGEMENT

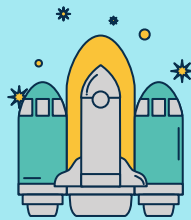
Manage all your processes and information in one place, with DoctorHelper® EHR your physicians can create and edit clinic records, for your patients, also they can E-prescribe medications, procedures, diagnostic images and laboratory tests. At the same time your organization can manage invoicing process and monitorize your medical equipment with our IoT solutions.

PATIENT CARE'S HISTORY

Our system allows you to track all your patient's care information, providing you with a wide vision over your patients medical history and fully equip your practitioners with the most updated and complete information to give more reliable diagnostics DoctorHelper® CDS.



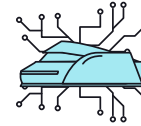
WE OFFER HEALTH IT SERVICES, FOR ALL ORGANIZATIONAL SIZE



POWERED BY  Microsoft

OFFICE 365
AZURE
MICROSOFT AI

DYNAMICS 365
POWER AUTOMATE
AZURE BOT SERVICE



01

Access and exchange data across organizational boundaries to convert your health data into actionable intelligence that will allow you to make smarter decisions



02

Manage your 360° patient attention, from appointments scheduling, through e-prescribing to procedures invoicing



03

Provide a personalized experience for your patients, giving them access to a personal portal for scheduling, and history management

