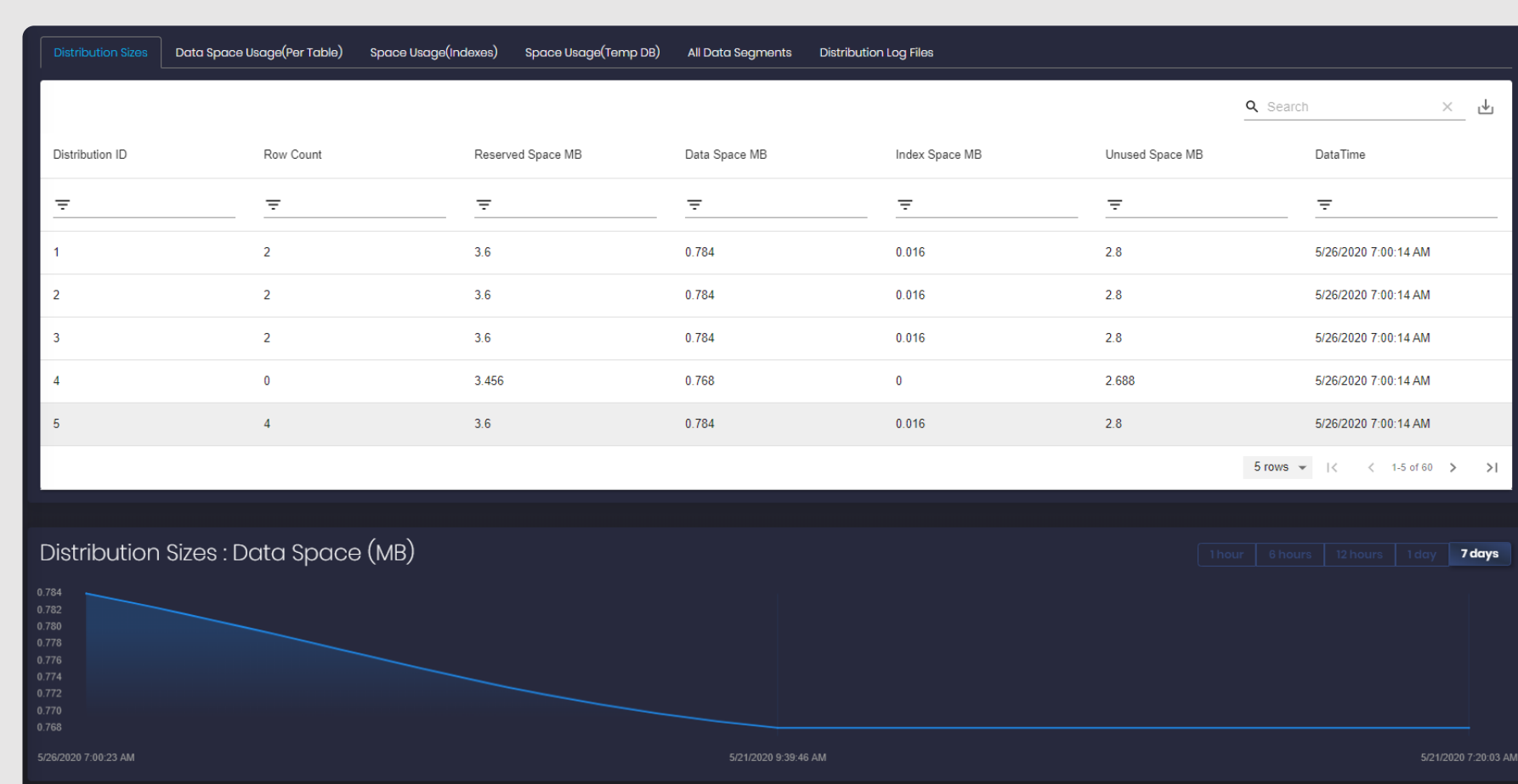
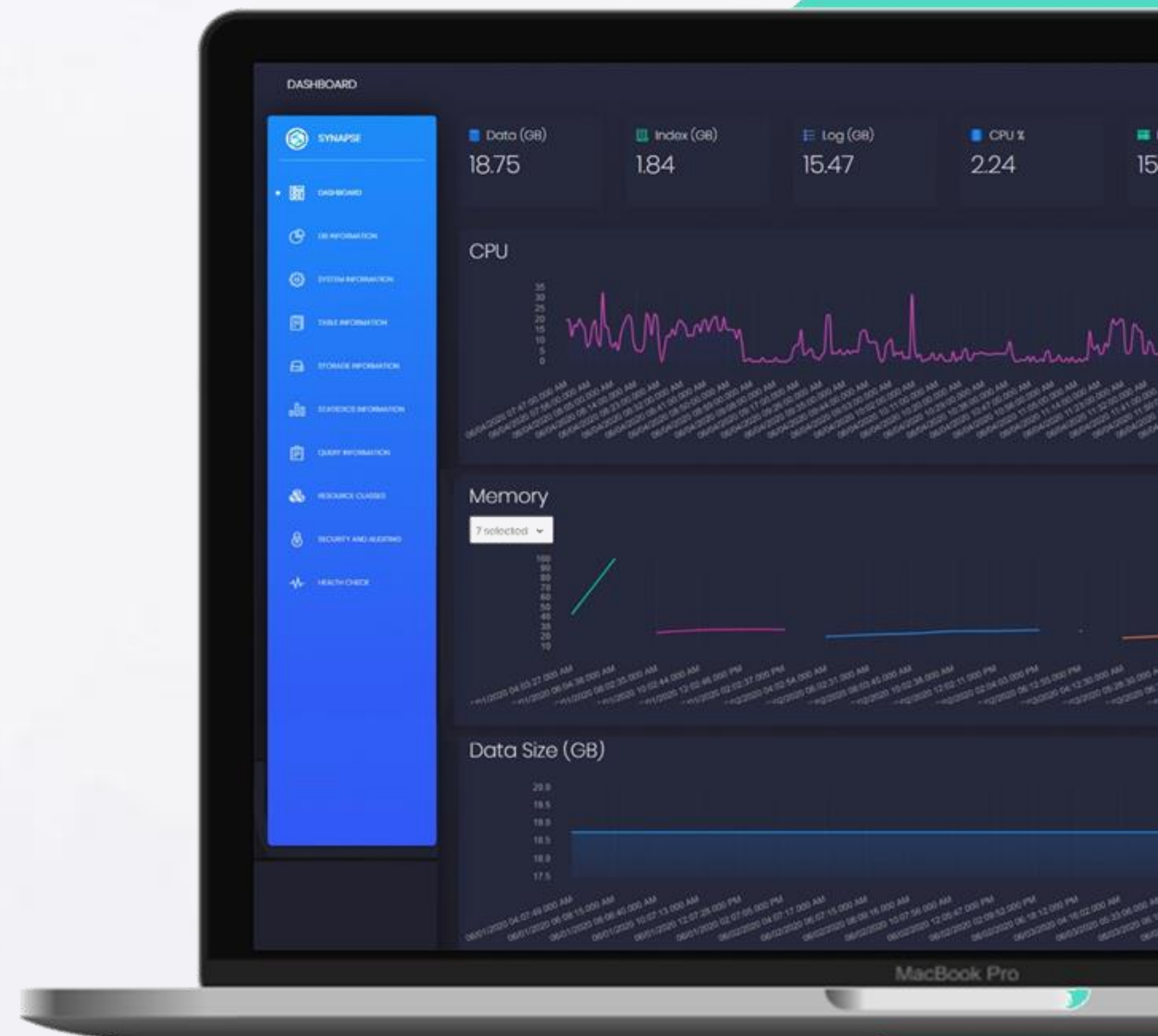


# Azure Synapse SQL Monitor



Azure Synapse SQL Monitor gives you comprehensive insight into your workloads and end-to-end visibility into the performance of your SQL data warehouse, helping you to dramatically reduce the time it takes to isolate and fix data warehouse issues



Execution request with This might take some time.

Health Check Results

ID	Name	Status	Start Time	Duration	Download Link
2020060500916168877	datapops	Running	06/05/2020 08:16:16.887 AM	00:00:16.5006206	<a href="#">Download</a>
202006040705489683	datapops	Success	06/04/2020 09:26:48.968 AM	00:02:20.4770837	<a href="#">Download</a>
202006020086358770	datapops	Success	06/03/2020 08:40:35.877 AM	00:02:13.3433374	<a href="#">Download</a>
202006021714118254	datapops	Success	06/02/2020 05:14:11.825 PM	00:02:55.8693900	<a href="#">Download</a>
202006021401048007	datapops	Success	06/02/2020 02:51:04.400 PM	00:03:28.5901774	<a href="#">Download</a>

Run Data Warehouse Health Check Report

Test Name	Result
Distribution Column Validation	Pass
Replicated Table Validation	Fail
Clustered Column Index Validation	Fail
Distribution Log Size Validation	Pass
Statistics Validation	Pass
Data Store	Pass
Concurrency Usage	Pass

System Information

Property Name	Value
SQL Capacity	100
Current System Configuration	DR1000
Requested System Configuration	DR1000
Created Date	5/12/2020 7:07:59 AM
Database Collation	SQL_Latin1_General_CP1_CI_AS
Status	Online
Database Name	production
Location	eastus

Summary Metrics:

- Data: 8.7 GB
- Index: 5.7 GB
- Log: 2
- Temp: 0.2 GB
- Size: 3.27 %
- Memory: 22 %
- Ratio: 1.99

## Features

- Monitoring Dashboard
- Database, System and Storage Information
- Table Information
- Statistics, Resource Classes (Workload Management) and Query related Information
- Security and Auditing related Information
- Comprehensive Health Check report
- Inbuilt support for multiple databases
- Support for monitoring of massively parallel processing(MPP)
- Integrated with the Azure AD for monitoring user authentication
- Retaining health check report for future reference
- Easy to manage, plug and play
- Use on any device (Mobile friendly)
- Modern and intuitive UI
- Low TCO and high ROI
- Customizations are available to best suit your requirement

## Why data warehouses monitoring is critical ?

Database monitoring is a critical part of any application's maintenance. Finding database issues in time can help the application remain healthy and accessible. Without solid monitoring in place, database outages can go unnoticed until it's too late and the business is losing money and customers.



# Challenges and Issues with Azure Synapse SQL



- Existing monitoring solutions are not fully compatible with Azure Synapse SQL
- Unavailability of a comprehensive integrated monitoring solution
- Unavailability of a real-time dashboard
- Unavailability of integrated auditing solution
- Lack of knowledge in MPP and Azure Synapse SQL
- Unavailability of comprehensive health check tool
- Unavailability of a real-time dashboard to simply check storage utilization, CPU and memory usage, cluster node information.
- Unavailability of options to check distributions, index, logs and TempDB utilization against historical usage
- Unavailability of option to see query/sessions with statistics and deep drill-down features with historical information
- Unavailability of option to see resource class usage and workload
- Workload execution history is limited, and retention require additional effort configuring and viewing



## Benefits

- ✓ Improved end-user experience
- ✓ Realtime monitoring of the user activities
- ✓ Ability to troubleshoot performance problems on a proactive basis, before they affect end users
- ✓ Insights into whether and how performance can be improved
- ✓ Capacity utilization and forecasting
- ✓ Insights into any security flaws
- ✓ Ability to go back in time to trace the root cause of past issues
- ✓ Waits, blocking and locking analysis
- ✓ Identifying the bottlenecks in the cluster

## Why Creative Software ?

Creative Software is a Software Service Provider with proven track records of 20+ years and a MS Gold Partner specialized in MPP (Microsoft APS and Azure Synapse SQL)