

OTEA

POWERED BY

ecomt.

REMOTE CONTROL FOR SMART MANAGEMENT: OTEA

ABOUT US...

Integrated system (hardware, software, services) for supervision and remote control of installations.

HVAC, lighting, multisite, energy efficiency and efficient maintenance plus enhanced comfort.



Established
+50
COUNTRIES

Translated
+8
LANGUAGES

Managing
+3250
SITES

Controlling
+35 mil
MACHINES

Installed in
+600
CITIES

Monitoring
+600 mil
VARIABLES

Computing
+3 bill.
DATA

WHAT DO YOU NEED? WHAT CAN BE IMPROVED?



- Emergency control?
- Avoid the blackout of store windows?
- Who switches on-off your facility?
- Outsource the control?
- Reduce costs?
- Longer life for your cooling system?
- Comfortable room temperature for your customers?

**LOOKING FOR A BETTER
CUSTOMER EXPERIENCE..MAY WE
HELP YOU?**

OTEA IS...



OTEA is the most **experimented**, **reliable** and the **safest solution** in the market



OTEA manages **HVAC and lighting** wherever you are, **just with one click**.



Compatible with any hardware and machine on the market: **open system**



OTEA manages **billions of data** in order to **avoid breakdowns** and to **predict failures**: **BIG DATA tooling**.



24h/ 365 days **control center service**.



Supporting the companies being **energy efficient** and **environmentally friendly**



Improving **customers comfort** and **increasing sales**



Facility management is made easier



Saving money



Full Support and assistance during installation and commissioning



Artificial intelligence for managing your facilities. **DATA mining**.

MAIN CHARACTERISTICS...



OVERSIGHT AND MANAGEMENT

Multi-site, multi-facility and multi-country platform



Electrical and thermal power, lighting, HVAC, industrial cooling, machinery...



Fire Emergency system and Access control.



Water Network

EFFICIENT AND COMFORTABLE SITES



Saving thermal and electrical energy.

Saving in the consumption of water.

Longer life for devices.



Great maintenance efficiency.

Total support for installations.

Better customer experience.



Scheduling events to program actions over the system.



Emergency setting in case of breakdown.

ADVANTAGES



Less staff responsibilities thanks to the autonomous operation.



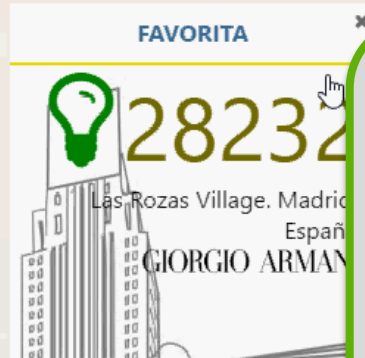
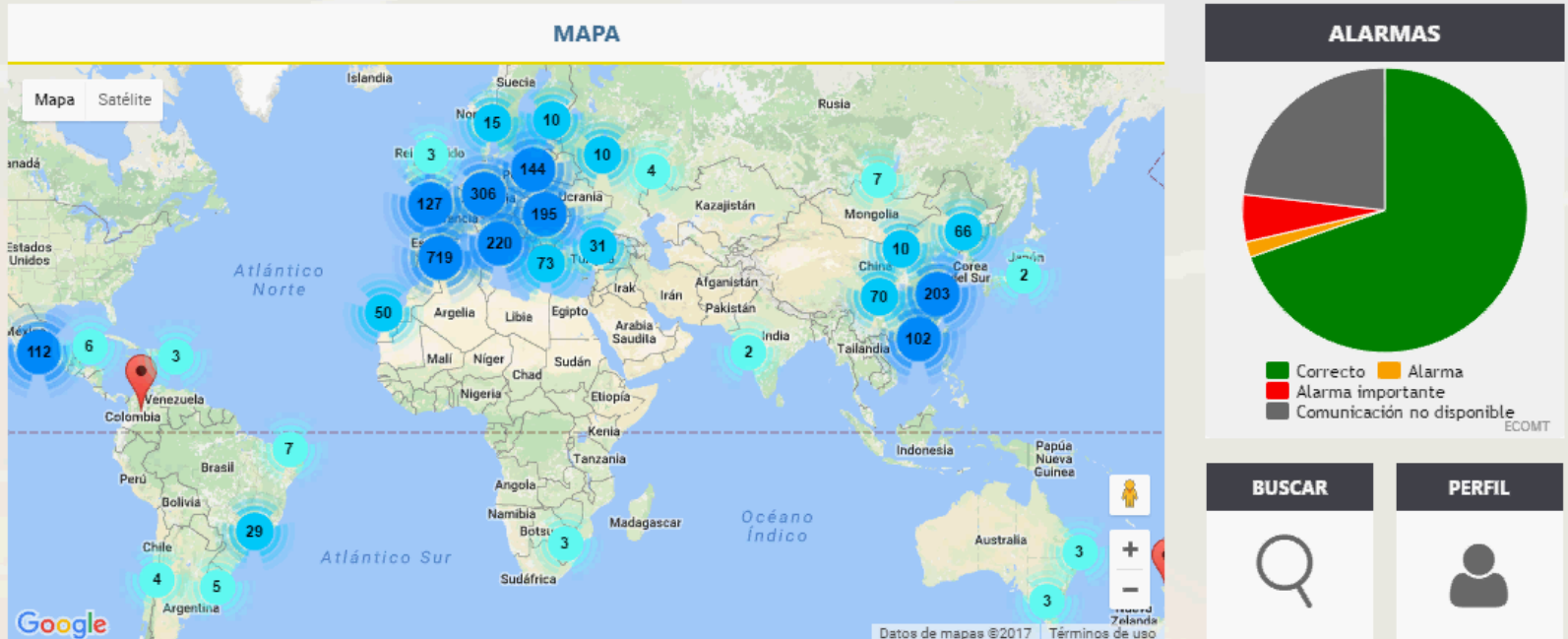
On cloud/on premise. Total control and security.



Green energy management.

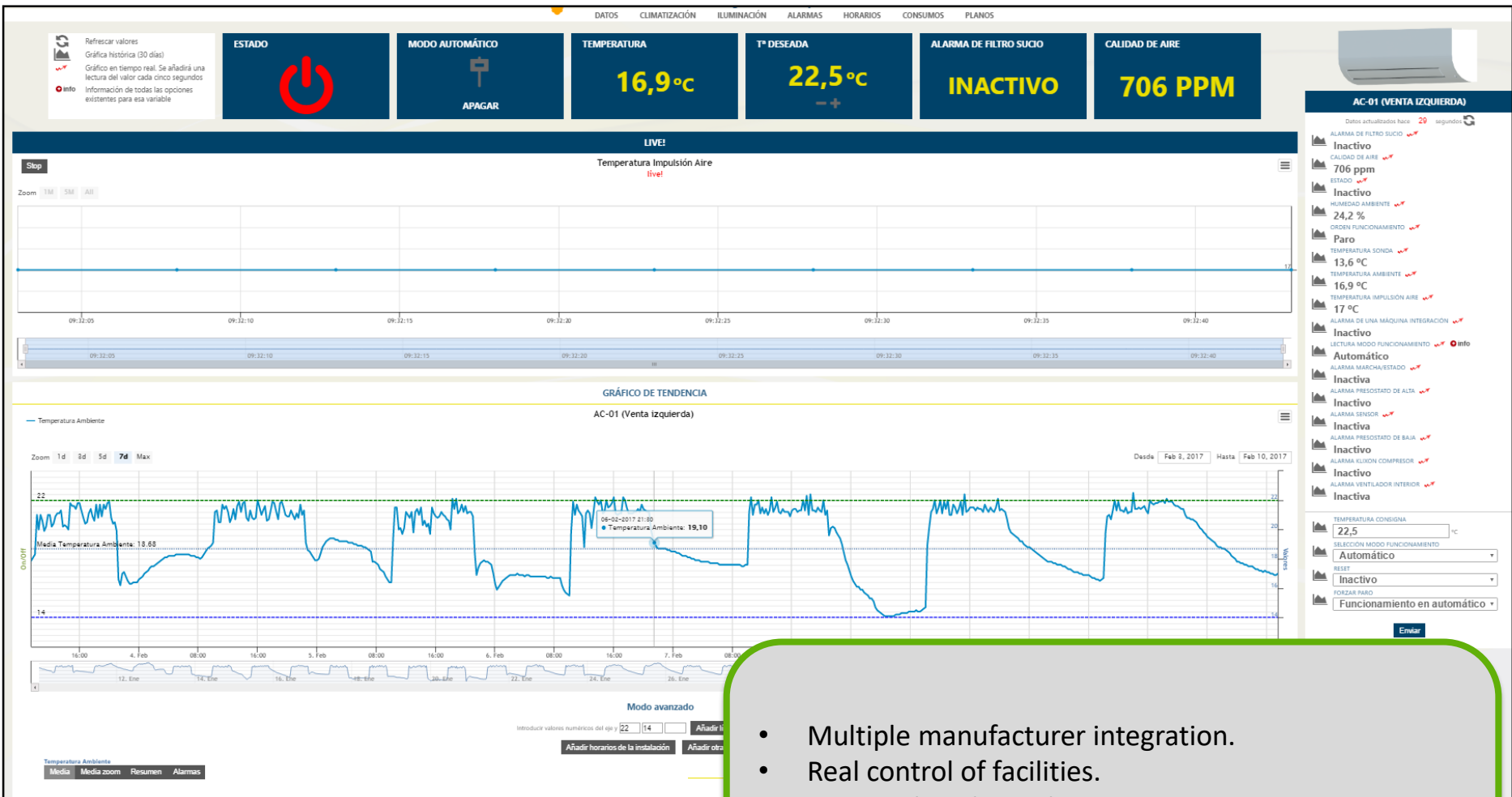
ACCESS AND INSTALLATION.

SISTEMA EXPERTO DE TELEGESTIÓN



- License for an unlimited number of variables and facilities.
- Installation on the client's virtual servers. On Cloud or private server. On Premises.
- Integration of multiple protocols.
- Local dialogue to prevent loss of data
- Securing communications by means of IoT devices and secured internet services

GRAPHIC ANALYSIS.



- Multiple manufacturer integration.
- Real control of facilities.
- Quarter-hourly readout
- LIVE reading every 5 sec.
- Comparison of any system variable.

OPERATION SCHEDULES.

7377

C/Juana de Vega, 7, A Coruña. Spain

BLUE COR HOTEL

DATAHVACLIGHTINGSCHEDULESPOWER METERS

SCHEDULES

This section allows you to view and download the installation schedules. Remember, the data can be up to 15 minutes old.

DOWNLOAD

Cold Water

	Monday	Tuesday	Wednesday	Thursday	Friday	Saturday	Sunday
Start	04:01	04:00	04:00	04:00	04:00	04:00	04:00
End	03:00	03:00	03:00	03:00	03:00	03:00	03:00
Start	00:00	00:00	00:00	00:00	00:00	00:00	00:00
End	00:00	00:00	00:00	00:00	00:00	00:00	00:00

Heating

	Monday	Tuesday	Wednesday	Thursday	Friday	Saturday	Sunday
Start	03:30	03:30	03:30	03:30	03:30	03:30	03:30
End	02:45	02:45	02:45	02:45	02:45	02:45	02:45
Start	00:00	00:00	00:00	00:00	00:00	00:00	00:00
End	00:00	00:00	00:00	00:00	00:00	00:00	00:00

DHW Heating

	Monday	Tuesday	Wednesday	Thursday	Friday	Saturday	Sunday
Start	00:01	00:01	00:01	00:01	00:01	00:01	00:01
End	23:50	23:50	23:50	23:50	23:50	23:50	23:50
Start	00:00	00:00	00:00	00:00	00:00	00:00	00:00
End	00:00	00:00	00:00	00:00	00:00	00:00	00:00

DHW Return

	Monday	Tuesday	Wednesday	Thursday	Friday	Saturday	Sunday
Start	05:00	05:00	05:00	05:00	05:01	05:00	05:00
End	23:55	23:55	23:55	23:55	23:50	23:50	23:50
Start	00:00	00:00	00:00	00:00	00:00	00:00	00:00
End	00:00	00:00	00:00	00:00	00:00	00:00	00:00

DATAHVACLIGHTINGSCHEDULESPOWER METERS

SCHEDULES: OUTSIDE LIGHTING

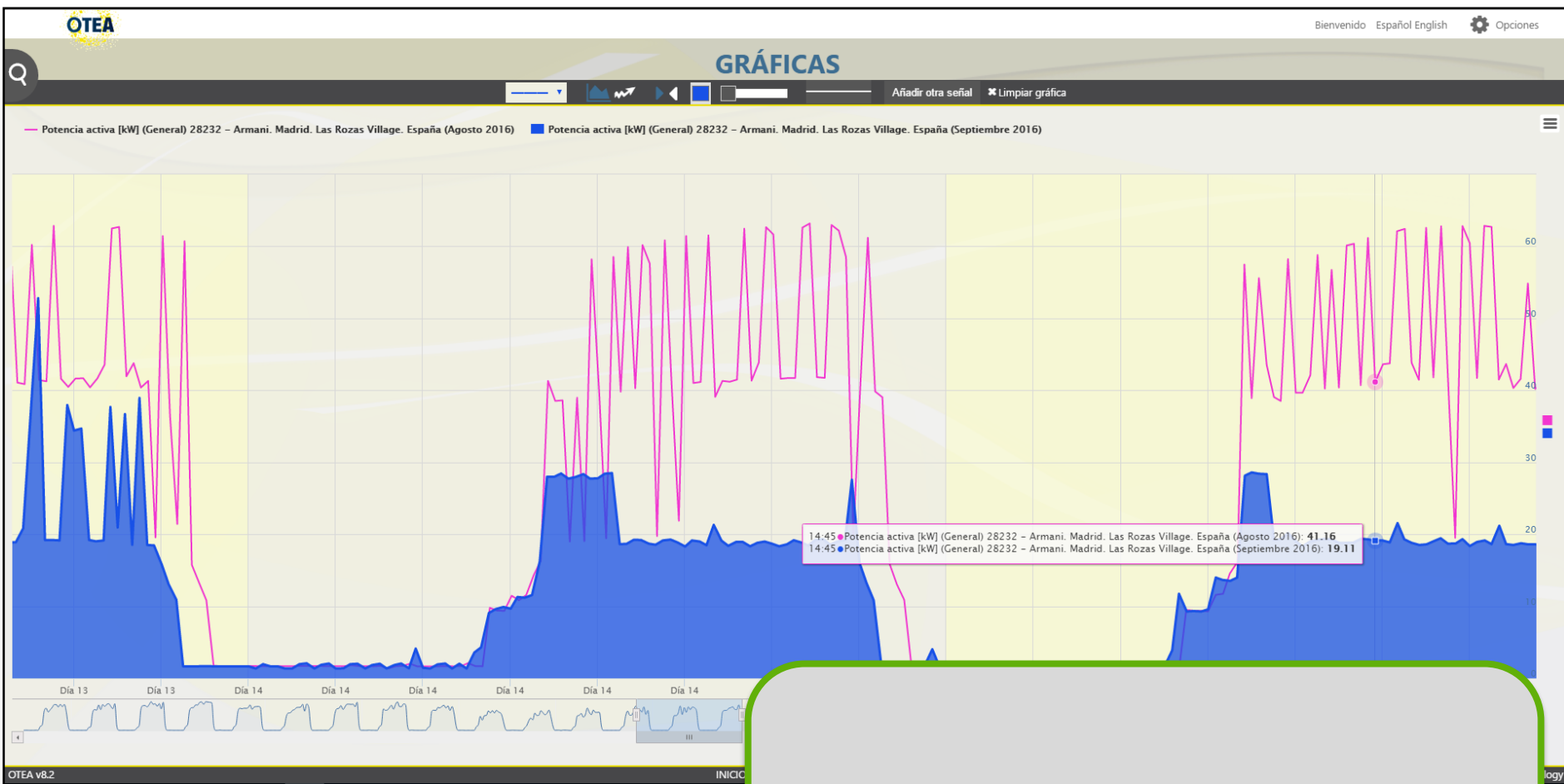
Data updated 14 seconds ago

	Monday	Tuesday	Wednesday	Thursday	Friday	Saturday	Sunday
Inicio	18:00	18:00	18:00	18:00	18:00	18:00	18:00
Fin	00:00	00:00	00:00	00:00	00:00	00:00	00:00
Inicio	00:00	00:00	00:00	00:00	00:00	00:00	00:00
Fin	10:00	10:00	10:00	10:00	10:00	10:00	10:00

Send

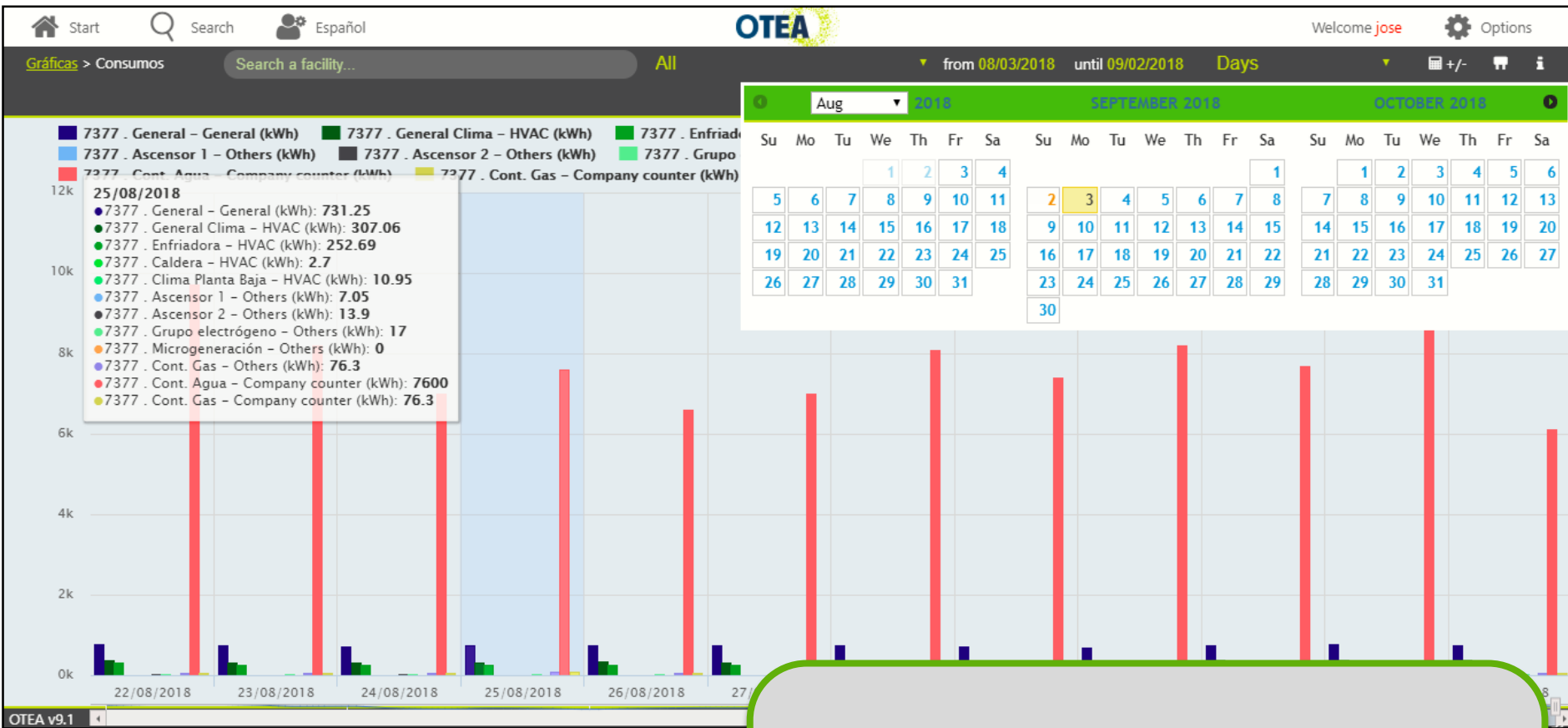
- Multiple operation schedules.

ADVANCED GRAPHIC ANALYSIS.



- Unlimited data recording.
- Comparison of any facility.
- Exportable charts: jpg, pdf...

CONSUMPTION ANALYSIS.



- Comparative by hours, days , weeks, months or years.
- Annual evolution.

[DOWNLOAD HISTORICAL DATA](#)

PLEASE CHOOSE THE TIME INTERVAL

CHOOSE VARIABLE TYPE

☐ Air quality

☐ Hot water return temperature

Active energy

☐ Room humidity

Add another signal

FACILITIES

Add facilities / areas / machines / variables

[DOWNLOAD HISTORICAL DATA](#)

Download

- Massive download data on csv format.

ANNUAL CALENDAR.

OTEA

Bienvenido EcoMT Español English Opciones



10 Rúa Manuel Murguía, S/N 15011 A Coruña, A Coruña. España

emalcsa

DATOS CLIMATIZACIÓN ILUMINACIÓN ALARMAS HORARIOS CONSUMOS

ESTABLECER FESTIVO 2018 →

INFO

Esta página permite consultar los festivos establecidos en los dos próximos años. La lógica de colores es la siguiente:

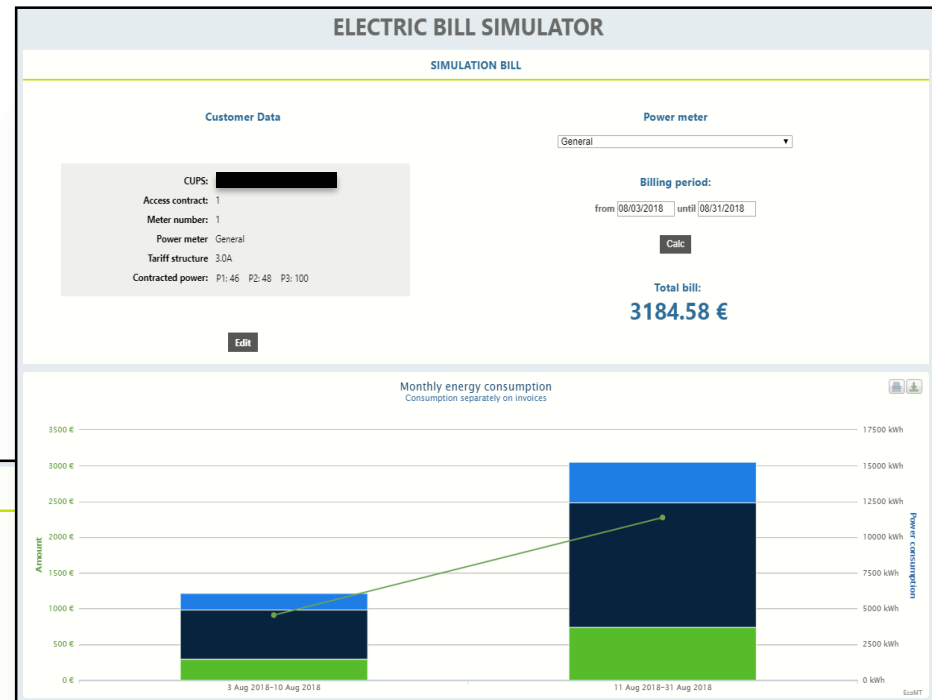
- **Festivo**
Día festivo para el año que se está visualizando.
- **Festivo permanente**
Día festivo que lo será todos los años.
- Error**
Festivo mal configurado. Se debería eliminar y volver a agregar.

enero de 2017							febrero de 2017							marzo de 2017							abril de 2017						
lu.	ma.	mi.	ju.	vi.	sá.	do.	lu.	ma.	mi.	ju.	vi.	sá.	do.	lu.	ma.	mi.	ju.	vi.	sá.	do.	lu.	ma.	mi.	ju.	vi.	sá.	do.
26	27	28	29	30	31	1	30	31	1	2	3	4	5	27	28	1	2	3	4	5	27	28	29	30	31	1	2
2	3	4	5	6	7	8	6	7	8	9	10	11	12	6	7	8	9	10	11	12	3	4	5	6	7	8	9
9	10	11	12	13	14	15	13	14	15	16	17	18	19	13	14	15	16	17	18	19	10	11	12	13	14	15	16
16	17	18	19	20	21	22	20	21	22	23	24	25	26	20	21	22	23	24	25	26	17	18	19	20	21	22	23
23	24	25	26	27	28	29	27	28	1	2	3	4	5	27	28	29	30	31	1	2	24	25	26	27	28	29	30
30	31	1	2	3	4	5	6	7	8	9	10	11	12	3	4	5	6	7	8	9	1	2	3	4	5	6	7
mayo de 2017							junio de 2017							julio de 2017							agosto de 2017						
lu.	ma.	mi.	ju.	vi.	sá.	do.	lu.	ma.	mi.	ju.	vi.	sá.	do.	lu.	ma.	mi.	ju.	vi.	sá.	do.	lu.	ma.	mi.	ju.	vi.	sá.	do.
24	25	26	27	28	29	30	29	30	31	1	2	3	4	26	27	28	29	30	1	2	31	1	2	3	4	5	6
1	2	3	4	5	6	7	5	6	7	8	9	10	11	3	4	5	6	7	8	9	7	8	9	10	11	12	13
8	9	10	11	12	13	14	12	13	14	15	16	17	18	10	11	12	13	14	15	16	14	15	16	17	18	19	20
15	16	17	18	19	20	21	19	20	21	22	23	24	25	17	18	19	20	21	22	23	21	22	23	24	25	26	27
22	23	24	25	26	27	28	26	27	28	29	30	1	2	24	25	26	27	28	29	30	28	29	30	31	1	2	3
29	30	31	1	2	3	4	3	4	5	6	7	8	9	31	1	2	3	4	5	6	4	5	6	7	8	9	10
septiembre de 2017							octubre de 2017							noviembre de 2017							diciembre de 2017						
lu.	ma.	mi.	ju.	vi.	sá.	do.	lu.	ma.	mi.	ju.	vi.	sá.	do.	lu.	ma.	mi.	ju.	vi.	sá.	do.	lu.	ma.	mi.	ju.	vi.	sá.	do.
28	29	30	31	1	2	3	25	26	27	28	29	30	1	30	31	1	2	3	4	5	27	28	29	30	1	2	3
4	5	6	7	8	9	10	2	3	4	5	6	7	8	6	7	8	9	10	11	12	4	5	6	7	8	9	10
11	12	13	14	15	16	17	9	10	11	12	13	14	15	13	14	15	16	17	18	19	11	12	13	14	15	16	17
18	19	20	21	22	23	24	16	17	18	19	20	21	22	20	21	22	23	24	25	26	18	19	20	21	22	23	24
25	26	27	28	29	30	1	23	24	25	26	27	28	29	27	28	29	30	1	2	3	25	26	27	28	29	30	31
2	3	4	5	6	7	8	30	31																			

- Modification of holiday calendar (avoid unnecessary consumptions).
- Management of permanent holidays..

ELECTRIC BILL SIMULATOR.

BILLING		
Concept	Calculation	Amount
Term variable energy		2118.55 €
	P1: 3993 kWh x 0.1252 Eur/kWh = 499.79 € P2: 12135.38 kWh x 0.1029 Eur/kWh = 1249.23 € P3: 5214.25 kWh x 0.0709 Eur/kWh = 369.53 €	
Term power		385.19 €
	P1: 50.4 kW x 0.1116 Eur/kW * 29 Days = 157.97 € P2: 71.16 kW x 0.067 Eur/kW * 29 Days = 130.49 € P3: 85 kW x 0.0446 Eur/kW * 29 Days = 110.02 €	
Term reactive energy		0 €
	P1: 0 kVArh x 0.0416 Eur/kVArh = 0 € P2: 0 kVArh x 0.0416 Eur/kVArh = 0 €	
Electricity tax	4.864% x 2503.74 € x 1.0523 =	128.15 €
VAT	21% x 2631.89 =	552.7 €
Total bill		3184.58



- Electricity company meter reading
- Partial closures simulation.
- Tool to optimize the contracted electrical power.

SGEN. ISO 50.001.

ENERGY MANAGEMENT SYSTEM (ENMS)

CONSUMPTION EVOLUTION

NEW STUDY +

NEW BASELINE +

DATA

Data

The base line shows a scatter graph. Each point of the graph shows the value of a consumption and its normalization factor in a range of time.

Explanation

The evolution of consumption is tested as reference values obtained based on historical data. In the graphical aspects track containing the selected ENPI shown. Through the reference line generated from the historical data. You can check whether the evolution of current consumption are achieving the expected results.

CONSUMPTION EVOLUTION AT THE FACILITY

Facility: 7377 - C/Juana de Vega, 7. A Coruña, Spain. (Blue Coruña (Production))
 Select ENPI: Blue Consumo enfriadora/CDD
 Study date range: 01.01.2018 0:00 - 08.31.2018 0:00
 Time rate: Monthly
 Baseline selection: Baseline calculation

BASELINE CALCULATION

Facility: 7377 - C/Juana de Vega, 7. A Coruña, Spain. (Blue Coruña (Production))
 Select ENPI: Blue Consumo enfriadora/CDD
 Reference date range: 01.01.2018 0:00 - 08.31.2018 0:00
 Time rate: Monthly
 Type of Baseline: Linear function

☒ Show Scatter graph and Baseline

Calculate Consumption Evolution

ENERGY MANAGEMENT SYSTEM (ENMS)

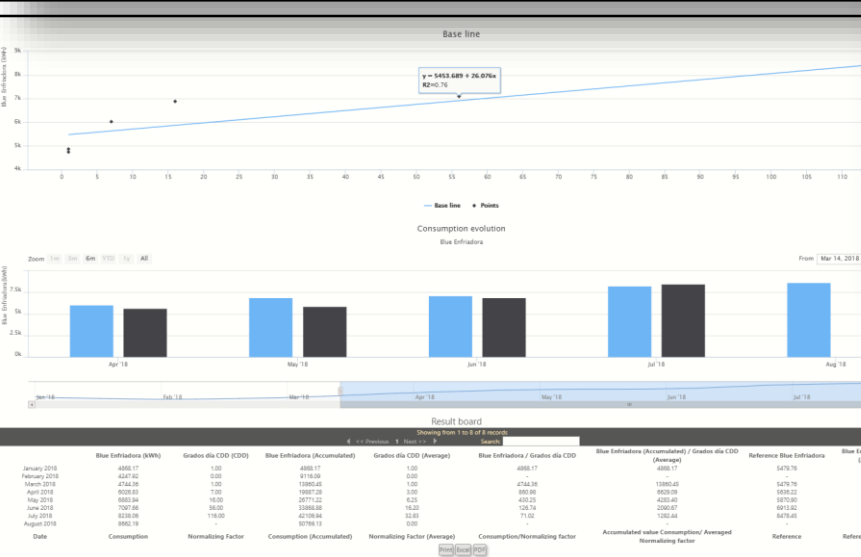
ENPI

ADD ENPI +

INFORMATION

This section allows the user to define new Energy Performance Indicators (ENPI) from the existing Consumptions and Normalizing Factors.

Showing from 1 to 10 of 51 data			
ENPI +	CONSUMPTION	NORMALIZING FACTOR	
Ratio kWh/Producto general	19 - Energía activa general	13 - Productos transportados	15185 - Spain
Ratio kWh/m2 general	19 - Energía activa general	10 - Superficie	15185 - Spain
Ratio kWh/m2	18 - Energía activa clima	10 - Superficie	15185 - Spain
Ratio kWh/HDD clima	18 - Energía activa clima	11 - Grados día	15185 - Spain
kWh Climatización/GD	48 - kWh Climatización	50 - Grados día HDD	15190 - Coruña
kWh Acometida Total/GD	59 - kWh Acometida total	50 - Grados día HDD	15190 - Coruña
IDEN Prueba Malasa	-	11 - Grados día	15185 - Spain
Iden Prueba Instra	36 - Consumo prueba Instra	23 - Normalizador Prueba Instra	15025 - P. Coruña
Ecomt Combustible cada 100km	51 - Combustible furgoneta	35 - Kilómetros furgoneta	15190 - Coruña
Consumo por habitante	56 - Energía eléctrica	37 - Habitantes Coruña	15181



- Tool for ISO 50.001 certification.
- Massive upload of data through csv files.
- Custom generation of KPI's.
- Detection of most important consumptions.

EVENT MODULE

NEXT EVENT IS

Do you want to...

THE DAYS
Every day

DURING
All day long

IF

Write a name for the event

Create

Do you want to...



Generate an alarm



Send a mail



Send a sms



Modify a value

WHAT do you WANT?

Will be checked on...



All



Monday



Tuesday



Wednesday



Thursday



Friday



Saturday



Sunday

DURING

24h

Always



Define schedules



Select schedules



Select fee period

WHEN do you want it to be REVISED?

Hours that will affect the event 10:00 - 20:00



Define

2A FEE	2DHA FEE	2DHS FEE	3.0A FEE	3.1A FEE	6.1A FEE
On-Peak	On-Peak Peak	On-Peak Peak Off-Peak	On-Peak Peak Off-Peak	On-Peak Peak Off-Peak	P1 P4 P2 P5 P3 P6

- Ranking of alarms by importance
- Modify the value of one or more variables.

EVENT MODULE

IF IT HAPPENS...



Value of a
variable is...



Lost
communication

HIGH



If value exceeds...

Valor

Send

LOW



If value drop below...

Valor

Send

OUTSIDE AN INTERVAL



If value exceeds...

Valor

or value drops...

Valor

Send

FALL WITHIN AN INTERVAL



If value is be...

Valor

and

Valor

Sen

HOW do you TRIGGER that event?

EVENTOS ACTIVOS 7

0

Sin alarma

0

Muy Baja

2

Baja

5

Media

0

Alta

0

Muy Alta

0

Crítica

EVENTOS SELECCIONADOS 1

CARGA TODOS LOS EVENTOS DE UNA INSTALACIÓN

Selecciona una instalación...



- Summary of events
- Mailing.

GLOBAL ARCHITECTURE OF THE SOLUTION

Local control



Control and automation for installations using local hardware (PLCs and HMIs)
Centrallization of existing PLCs and SCADAs



Directed to

Retailers, final clients and facility managers

OTE platform



Remote management

Monitoring and controlling real time installations from any device directly on the Internet.

Reporting: charts and energy analysis.

Artificial Intelligence to improve the behavior of installations



Directed to

**Management
Directors
Facility managers
ESCOs**

Other services



OTE Center 365 days/24h.

Energy and F.M. consulting.

Certifications **LEED, BREEAM, EVO**
IPMVP, ISO 50.001.



Directed to

**Directors
Facility managers
ESCOs**



OTEA
MEMBER OF
ecomt

SOME CUSTOMERS...

Over
3.250
sites under
control

ABANCA



ain

CH
CAROLINA HERRERA



altia

ancin
CLINICAL

ARENAL
PERFUMERIAS

creo
GESTORES ENERGÉTICOS



ASEPEYO



Bershka

elbion
KLIMATECHNIK

emalcsa

GADIS

BLUE CORUÑA
HOTEL

BorgWarner

CARAMELO

GIORGIO ARMANI

Goainvest

GUTS
INSTALLATIETECHNIK

INDITEX

instra
INGENIEROS

Julio Álvarez
INSTALACIONES

oysho

PELICANO
REFRIGERACIÓN

povisa
HOSPITAL

KALEIDO
IDEAS & LOGISTICS



lefties,

PULL&BEAR

S.T.L.



MANTINAIR
MANUTENIMIENTO INTEGRAL, S.L.

mar del plata
HOTEL

Massimo Dutti
- SINCE 1985 -

TEAS
TECHNICAL EQUIPMENT S.A.

TEKNO CLIMA

tempe
GROUP EDITOR

NH
HOTELS

Nordés

Orona

Termodin/air

TUBASYS

smart
city

vithas

ZARA

ZARA
HOME



depoGAP

UTERQUE

CONTACT US

SPAIN

Headquarters: A Coruña
Pol. de Pocomaco, 4º Avd. – Parc. I-26B
15190, A Coruña

Barcelona
Edificio El Rengle, Bloque D, Planta 2ª. Oficina 2.05.
Passatje Adolf Comeron Nº18
08302, Mataró – Barcelona

Madrid
C.Empresarial Tartessos
C/Pollensa 2
28230, Las Rozas - Madrid

USA

New York
30 Broad Street, Suite 1421. New York NY 10004 - USA
Phone: + (1) 646 480 4892 | Mobile: +(1) 917 362 5682

MÉXICO

Guadalajara
Circunvalación Agustín Yañez 2895, piso 3
Colonia Arcos Vallarta
44130, Guadalajara – México

CHINA

Shanghai
503 Room, 207-209 Wulumuqi N.Rd.
Shanghai, 200040 - China

