

LONG-TERM ARCHIVE



Formpipe.



WHY LONG-TERM ARCHIVE?

Long-term digital preservation is a critical element of good corporate governance. Being able to retrieve human-readable documents and data for internal business reasons, clients, employees or external regulators is a key requirement, and being able to do this efficiently can deliver financial benefits.

Our approach to digital preservation is born from the needs of the most digitised societies in Europe, Denmark and Sweden. Our product, Long-Term Archive, is widely used throughout the public sector in the Nordics and the demand the national archives, government agencies and municipalities have placed on this product over the last ten years, has ensured we can meet all preservation needs.

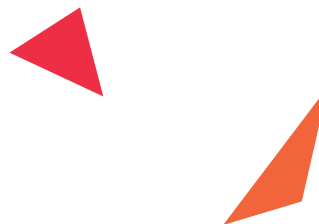
Following the OAIS methodology and adhering to a number of ISO approaches, we are now bringing this proven preservation method to commercial businesses.

ENSURING STORAGE INDEPENDENCE

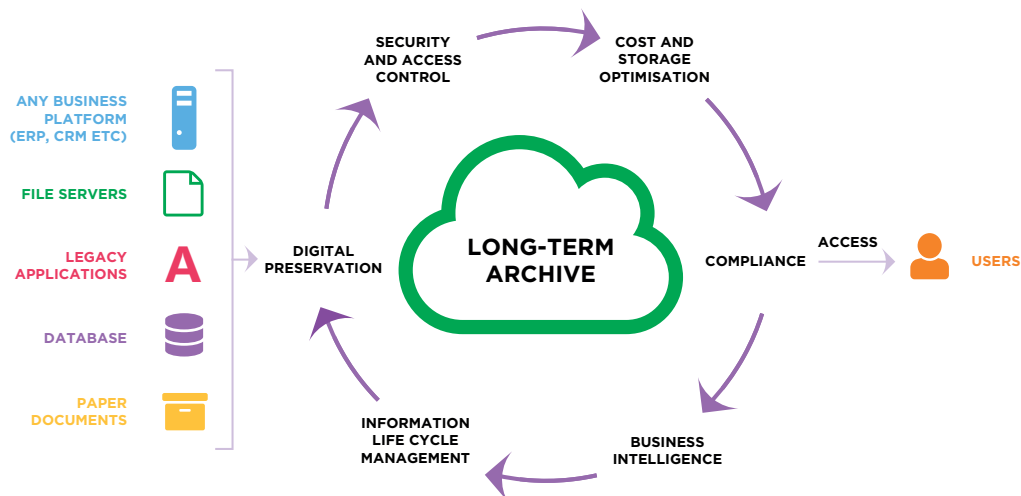
Fundamental to this approach is ensuring storage independence. Long-Term Archive acts as a gateway to your stored objects. You, as the client, have the ultimate decision on the location of the objects and data with the ability to embrace low cost cloud storage and have on site storage for other objects. The key is that you are not reliant on Long-Term Archive or Formpipe to access your documents, data or objects.

“ Long-Term Archive brings digital preservation best practice to the commercial world, embracing all the tools and functions available and presenting them in a business friendly manner”

Ben Saxton,
Digital Preservation Lead, Formpipe.



THE COMPLETE LONG-TERM ARCHIVE SOLUTION



YOUR BENEFITS ARE:

SAVE MONEY

Reduce the cost of maintaining legacy systems by migration to a preservation platform

CONTROL ACCESS

A flexible permission matrix that matches your organisational needs

EASILY ACCESSIBLE

Access archived records from within your existing systems

LONG-TERM PRESERVATION

Follow ISO and OAIS methodology built in to the product to ensure human - readable content in 50 years time

SYSTEM RETIREMENT

A “huge” amount of money and resource is wasted by organisations on the maintenance of legacy systems that are no longer used on a day-to-day basis. Companies are fearful of removing these systems as they need the assurance of access to the content stored within them. Accessing legacy data is not a reason to maintain an electronic system but can be a reason to feel obligated or bound to that system.

A proven approach to system retirement allows the content to be migrated to a dedicated preservation platform, achieving long-term (50 years+) preservation and the ability to significantly reduce costs by retiring multiple legacy systems onto the same platform.

SAVE MONEY



Our approach to managing legacy data and systems is proven to save money as soon as the project goes live. Multiple legacy systems can be retired saving on the hosting, maintenance and staffing cost associated with it. Long-Term Archive becomes the common platform for preservation.

ENSURE COMPLIANCE

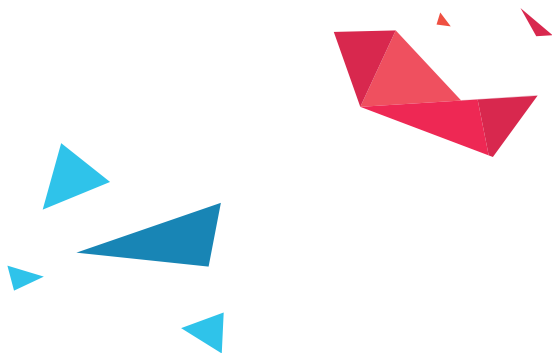


Compliance is achieved by being able to search accurately and comprehensively on the phrases or metadata required by the business. Long-Term Archive also ensures that data and objects are not degraded, lost or incorrectly accessed.

EASILY ACCESSIBLE



Whilst ensuring safe, correct and recorded access, Long-Term Archive also delivers speed of search. Our approach to ingestion ensures that the preservation platform is delivered with the ability to effectively search and retrieve for your business. Features such as retaining previously saved and shared searches enables efficient and speedy retrieval.





REMOVING THE INGESTION BARRIERS

Many preservation projects fail at the data migration stage and pre-ingestion challenges are common, but we have proven procedures that enable a smooth migration and a successful ingestion into the preservation platform.

Our visual workflow tool delivers an easy to understand migration plan with each step able to have rule-based gateways for data validation, metadata enrichment and OAIS file conversions. Our ability to accept almost any file format results in a successful ingestion from common or old and rare source systems. If you bring us the data, we will provide the ingestion.



CONNECT TO CORE SYSTEMS

Our migration tool offers the ability to connect to your core systems as a form of input. We can then run the content and objects through the workflow and ingest into Long-Term Archive. This results in an active preservation solution that ensures your core systems are not burdened by historic data.



MINIMUM EFFORT INGESTION

We are great believers in MEI (Minimum Effort Ingestion) and by starting at the end point when designing the structure, permissions and metadata, we ensure that your project is focussed on achieving a live system rather than dealing with historic issues. MEI underpins commercial viability of preservation projects.



DATA CONTAINER

Long-Term Archive is a fully functioning digital preservation platform but can also be used as a repository to aid a larger migration. The platform can provide a location to store data that the organisation needs to move but is unsure where to. For the short-term or the long-term, it provides a secure and low cost GDPR-compliant solution.

BRINGING PRESERVATION CLOSER TO YOUR SYSTEMS

Connecting to core systems is only the first step of bringing digital preservation best practice closer to your core, day-to-day systems. At Formpipe, we want to make Preservation a one-click, daily occurrence.


We understand your source systems and our pre-configured archives reflect the structure and metadata schemas of everyday systems, such as industry leading ERPs, Dublin core and electronic trial master files used in drug manufacture. Pre-configured archives significantly reduce the amount of project discovery and consultancy time required to get the archive live.

ERP CONNECTORS







Our ERP connectors take this a stage further allowing a user to both archive and retrieve from the organisation's chosen ERP. Through our connectors, we introduce digital preservation without the user having to leave the interface they use all day, every day.





 Tel. +46 855 529 060
Email. lasernet@formpipe.com

Sveavägen 168
113 46 Stockholm
Sweden

 Tel. +31 (0) 737 040 318
 Tel. +49 (0) 40-31 99 34 32
 Tel. +45 43660210
 Tel. +33 983 660 909
 Tel. +44 (0) 1223 919 608
 Tel. +1 908-399-7828