

Production Efficiency Tool

Integration and visualization of digital data



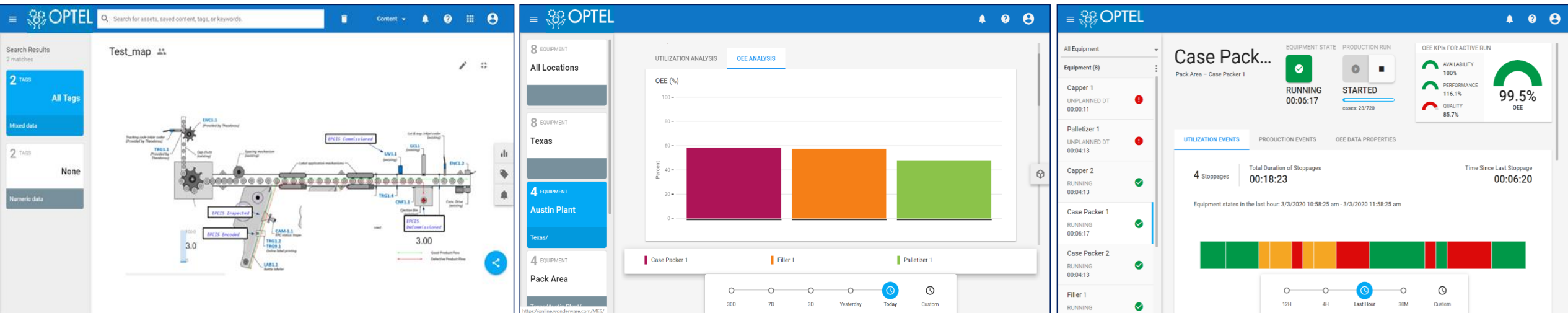
PRODUCTION EFFICIENCY TOOL

PLATFORM OVERVIEW

Cloud platform for **collecting**, **storing** and **visualizing** data across the company for **smarter**, **faster** business decisions

KEY DIFFERENTIATORS

- Low-cost software as a service (SaaS) solution
- Painless integration: No additional IT required
- Scalable solution
- Highly configurable menus that can be adapted to specific user needs
- Easily understandable power analysis and intelligent reporting tools for authorized users
- Agnostic solution that easily connects to your systems
- Standardize and share best performance management practices in the cloud



PRODUCTION EFFICIENCY TOOL

VALUE PROPOSAL

CONSOLIDATE: Integrate content from multiple data sources using a single, cloud-based system.

LARGE CAPACITY: Handle millions of tags and unlimited users, providing immeasurable capability.

ACCESS ANYWHERE: Powerful analysis and reporting tools deliver visualization to web or mobile devices anywhere, anytime.

COLLABORATE: Share operational insights and best practices across the company.

STAY CURRENT: The software as a service is continuously kept up to date and allows for updates to be managed seamlessly in the cloud.

STAY SECURE: Safe, secure and reliable solution powered by Microsoft Azure's proven cloud technology.

POWER EFFICIENCY TOOL

PLATFORM FEATURES

- Leverage existing smart sensors, such as IoT devices and automation systems, and make the data accessible
- Remotely monitor geographically dispersed assets
- Gain immediate access to personalized, performance data
- Visualize process status over time so you know what to do next
- Securely and cost-effectively access industrial data outside the control network
- User-friendly Information management tool with rapid time to value
- Provides a single view of operational performance from multiple systems or devices
- Android and iOS compatible, powered by the Aveva platform
- Retrieve data automatically at a set frequency in either the band owner's system or OPTEL's, or via CSV extraction (Excel file).

VISUALIZE YOUR DATA ON ANY DEVICE



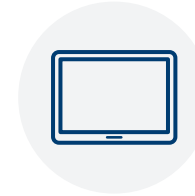
SMART WATCHES

Compatible with Apple Watch
And Android Wear devices



SMART PHONES

iPhone, Android and others



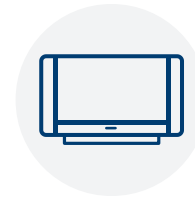
TABLETS AND PHABLETS

iPad and super-sized phones
like Samsung Galaxy Note



DESKTOP PCS AND LAPTOPS

Via any modern HTML5
Browser like Chrome, Safari,
Edge and IE11



LARGE SCREEN DISPLAYS

Such as projectors or
an HDMI TV driven by
a smart browser

PRODUCTION EFFICIENCY TOOL

WHO IS IT FOR?

Typical users are internal stakeholders such as:

- **Production teams** who need to monitor work-order execution and target key performance indicators on product output, performance and quality
- **Field engineers** who need remote monitoring of field assets without heavy infrastructure
- **Maintenance engineers** who need to track asset maintenance, parts inventory and work-order status
- **Business Analysts** who want to identify production patterns or outliers and discover areas of improvement or cost reduction
- **Management teams** who want summary data from key performance indicators on overall plant-wide or multi-regional production and performance targets

PRODUCTION EFFICIENCY TOOL

BENEFITS FOR THE END USER



- Better understand your business: past and real-time operational data, trends and likely scenarios
- Become an active participant in real-time work streams that enhance collaboration between teams
- Expose opportunities to reduce operational costs, increase asset performance and drive production results

Use Cases

- **Business analysts** who want to identify production patterns or outliers and discover areas of improvement or cost reduction
- **Management teams** who want summary data from key performance indicators on overall plant-wide or multi-regional production and performance targets
- **Production teams** who need to monitor work-order execution, target key performance indicators on product output, performance and quality
- **Line supervisors** who need to measure and analyze asset performance and downtime and to target product specifications
- **Field engineers** who need remote monitoring of field assets without heavy infrastructure
- **Maintenance engineers** who need to track asset maintenance, parts inventory and work-order status

POTENTIAL APPLICATIONS

Real-life examples of how the platform has solved issues and improved OEE:

- **Optimize production across MES solution**: unify data and real-time manufacturing information across the plant to enable process optimization and drive operational efficiency.
- **Maximize existing equipment and leverage** cloud and IoT technologies to deliver an always-up-to-date view of critical systems.
- **Build a repeatable, global model** that enables remote monitoring and optimization of procurement in the field globally; enable remote diagnostics of procurement problems; and implement a transparent solution to report on contractual obligations regarding procurement efficiency.
- **Gain access to critical information** that is locked away in the control room; remotely provide visibility over plant performance – particularly during the nightshift when the plant is unstaffed – to determine if onsite intervention required.
- **Implement a mobile process management system** to ensure the safety of the product produced every day; enable field operators to access critical data via mobile devices for immediate decision-making onsite.

PRODUCTION EFFICIENCY TOOL

Dashboard Examples

Acme Foods Energy States

Tag	Type	Quality	
State	Discrete	64	
Unwinder Motor Film State	Discrete	64	
State	Discrete	64	
Unwinder Motor Film State	Discrete	64	

Energy Consumption

Tag	Type	Quality	
Infeed Motor Current	Analog	64	
Machine1 .Main Motor Current	Analog	64	
Motor Wrapper Current	Analog	64	
Infeed Motor Current	Analog	64	
Machine1 .Main Motor Current	Analog	64	
Motor Wrapper Current	Analog	64	
Infeed Motor Current	Analog	64	
Machine1 .Main Motor Current	Analog	64	
Motor Wrapper Current	Analog	64	
Infeed Motor Current	Analog	64	
Machine1 .Main Motor Current	Analog	64	

Sesame Snack-State

Tag	Type	Quality	
State	Discrete	64	
Unwinder Motor Film State	Discrete	64	

Wonderbar State

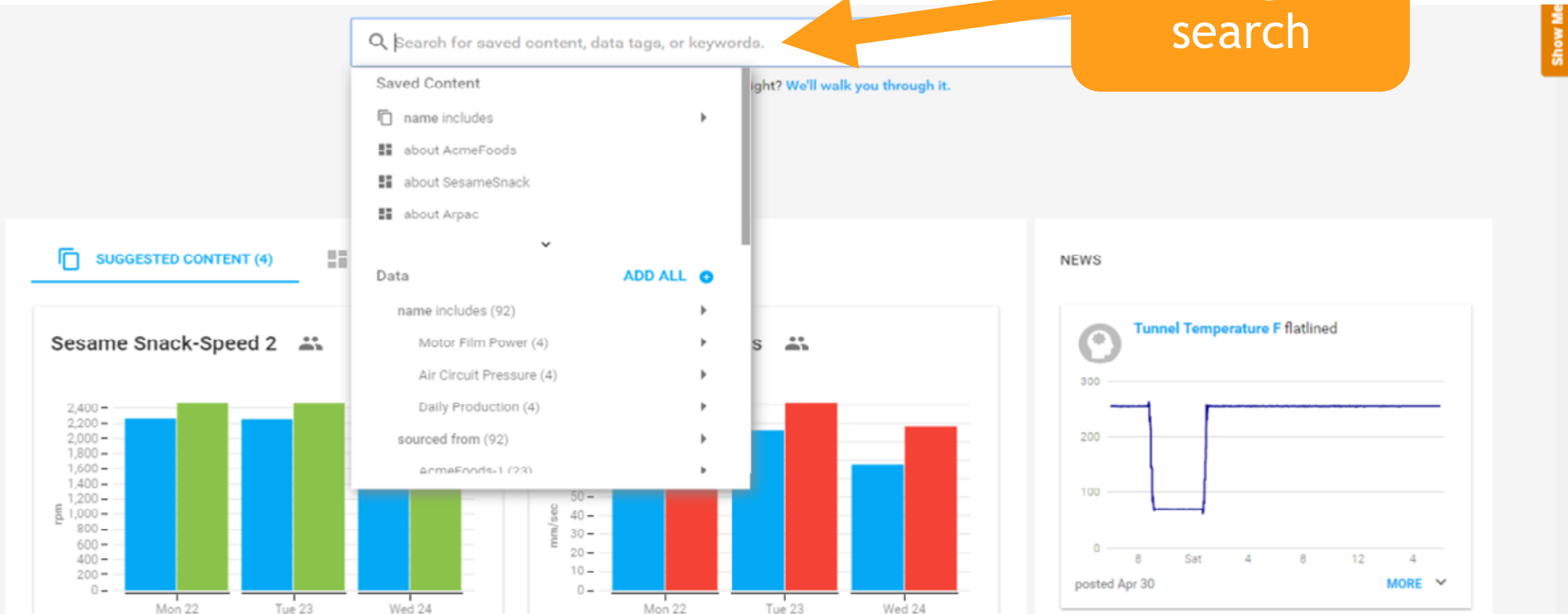
TagName	State
State	2 transitions 40.18% Stopped, 59.81% Running, 0.01% NULL
Unwinder Motor Film State	2 transitions 40.18% Stopped, 59.81% Running, 0.01% NULL

Auto-generated
dashboards

PRODUCTION EFFICIENCY TOOL

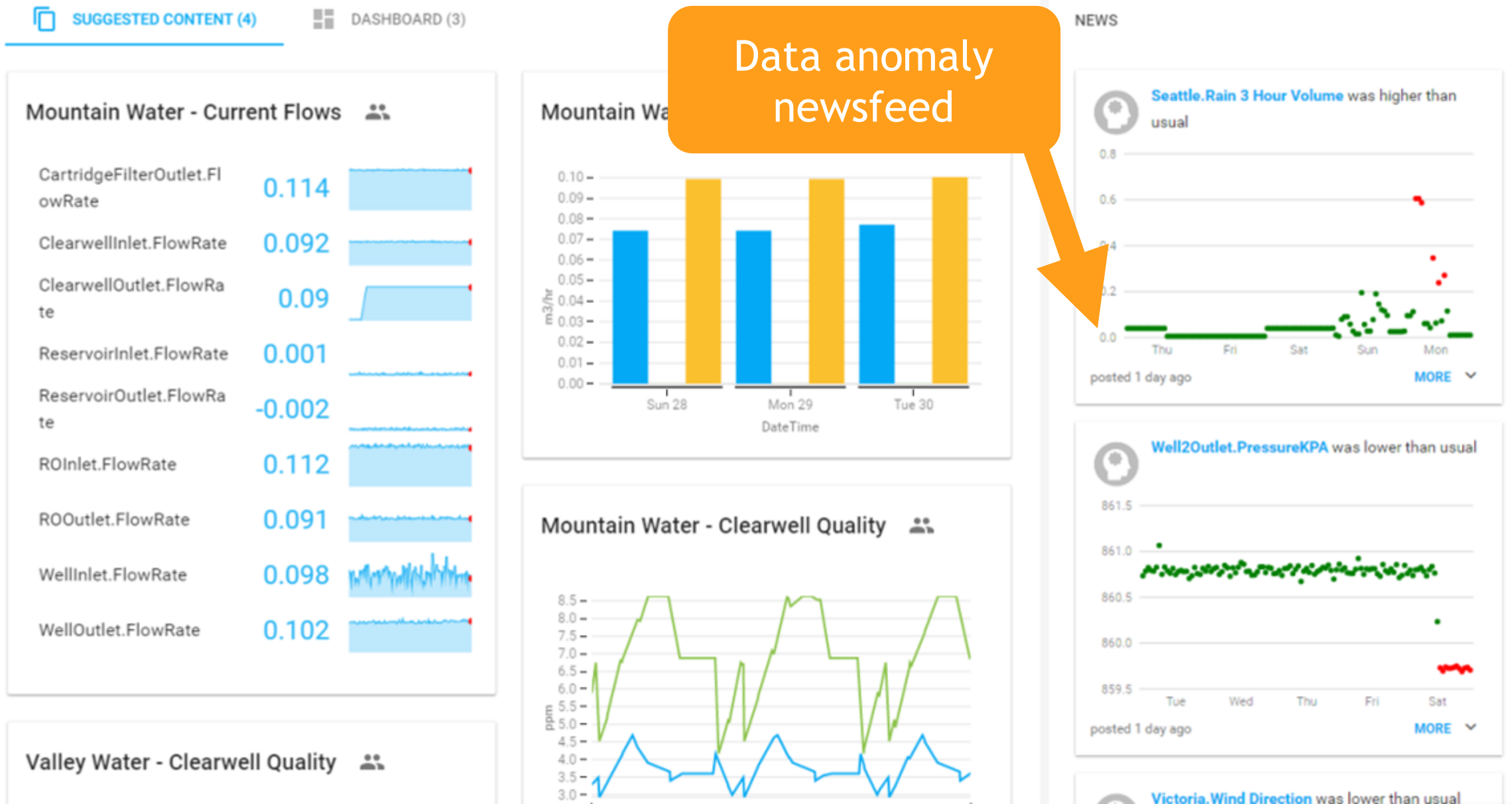
Dashboard Examples

Intelligent
search



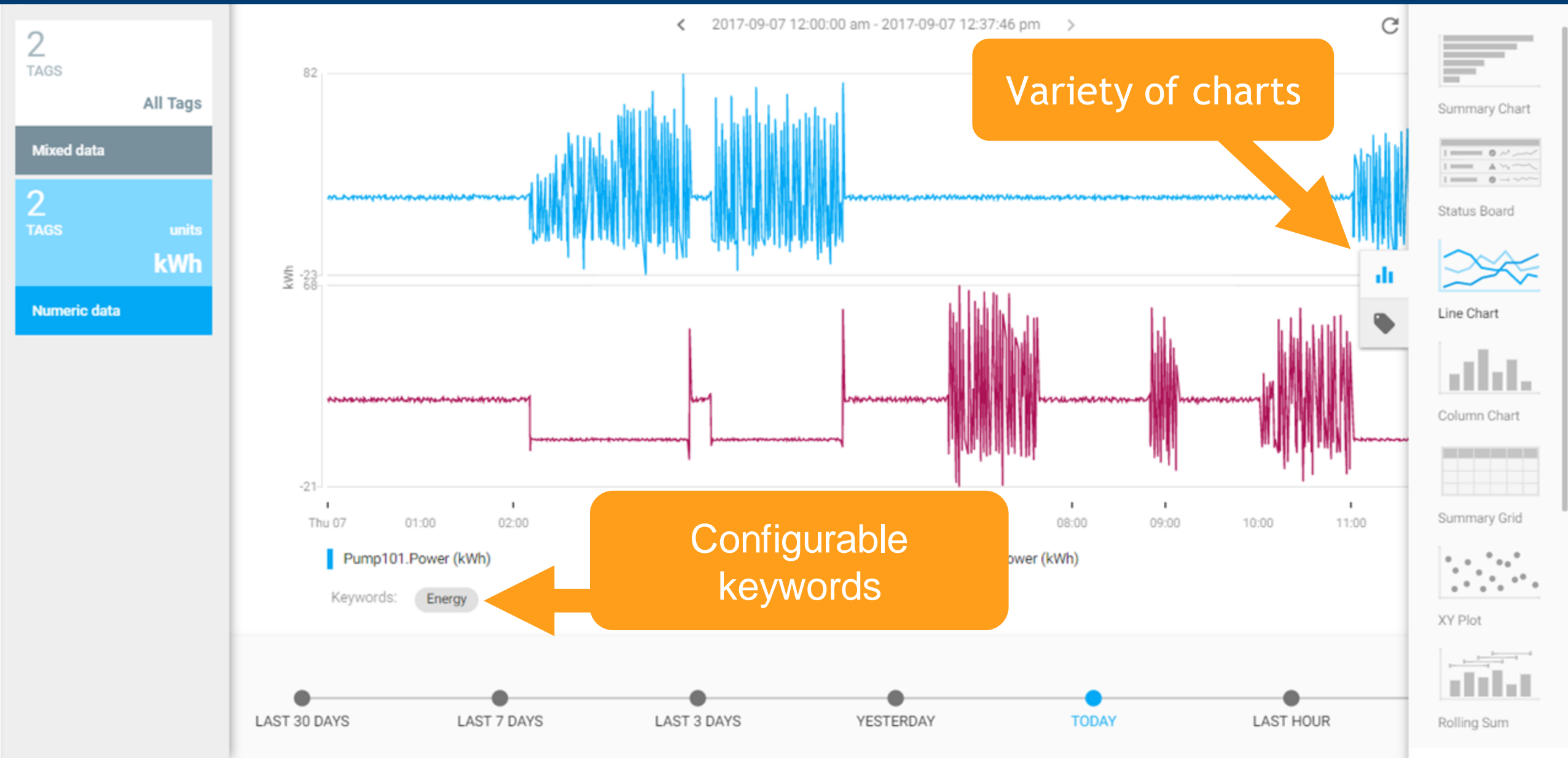
PRODUCTION EFFICIENCY TOOL

Dashboard Examples



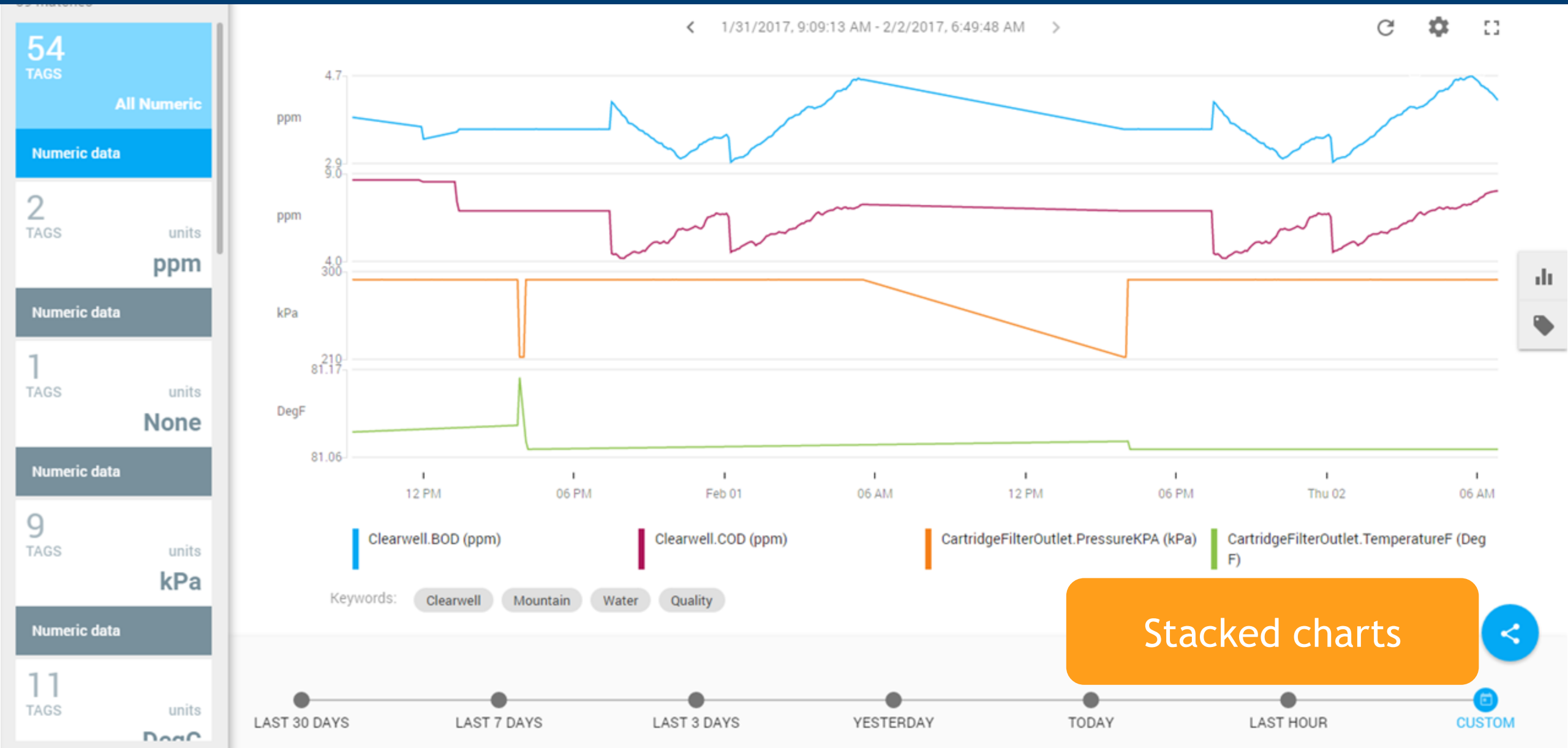
PRODUCTION EFFICIENCY TOOL

Dashboard Examples



PRODUCTION EFFICIENCY TOOL

Dashboard Examples

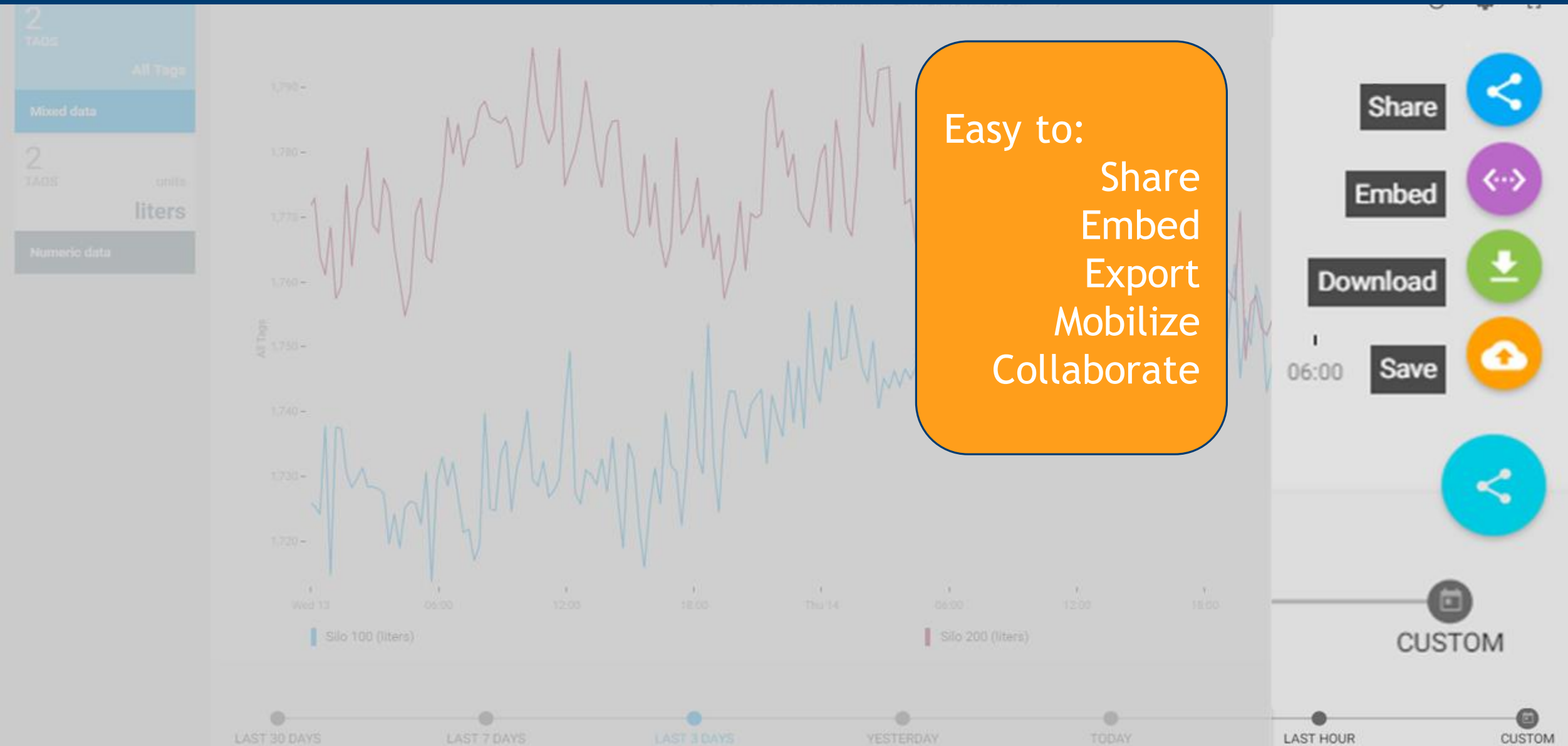


PRODUCTION EFFICIENCY TOOL

Dashboard Examples

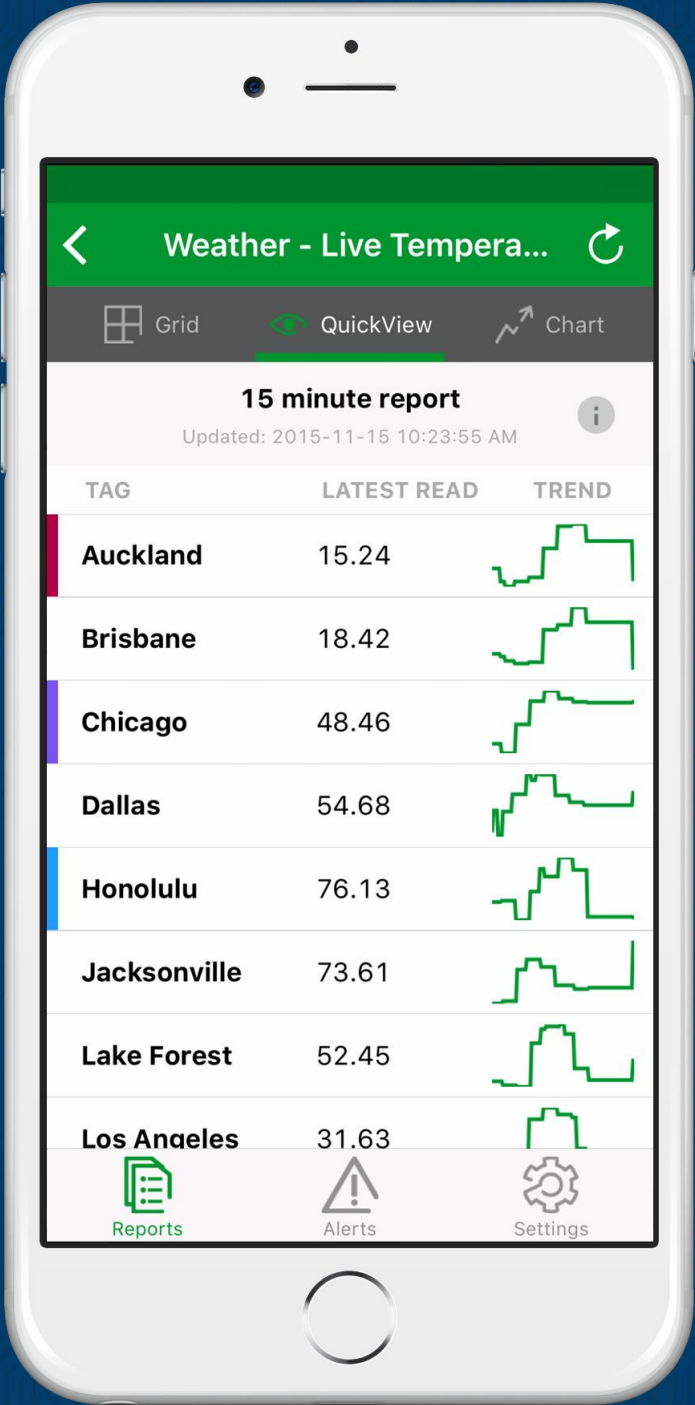


PRODUCTION EFFICIENCY TOOL

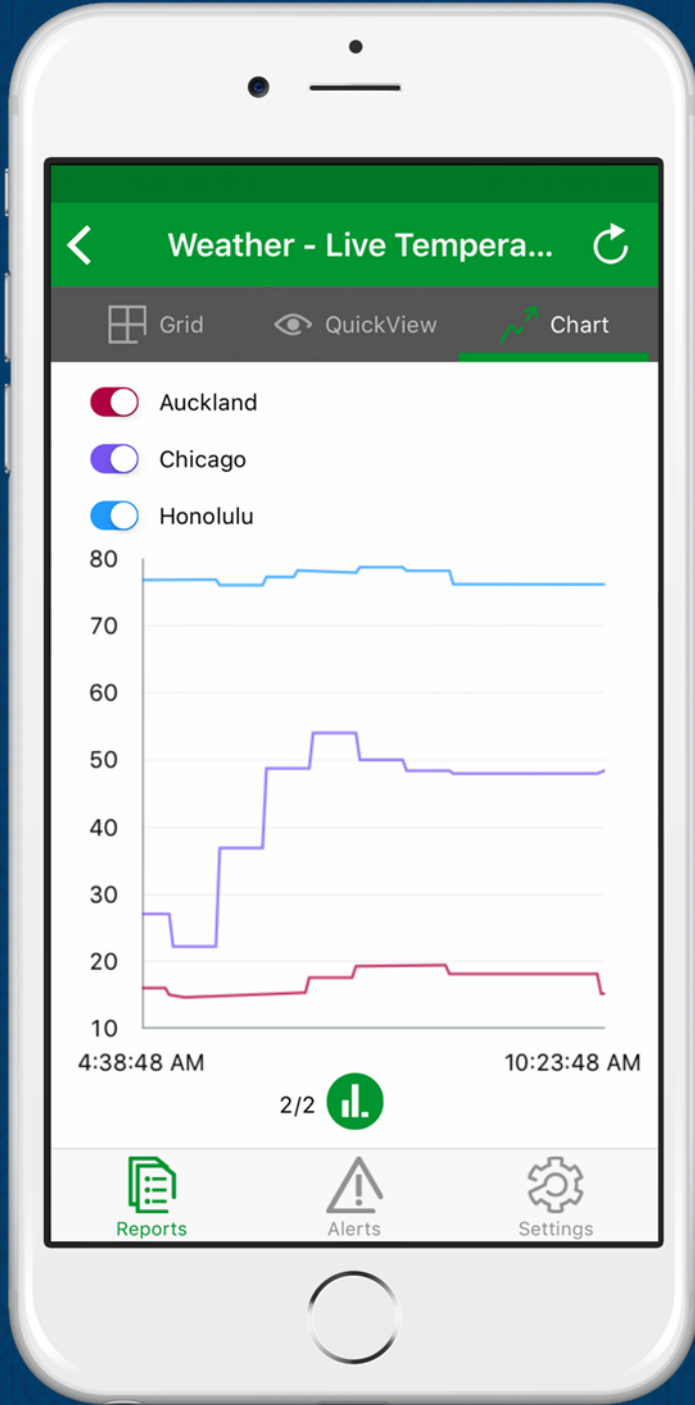


Mobile Dashboard Examples

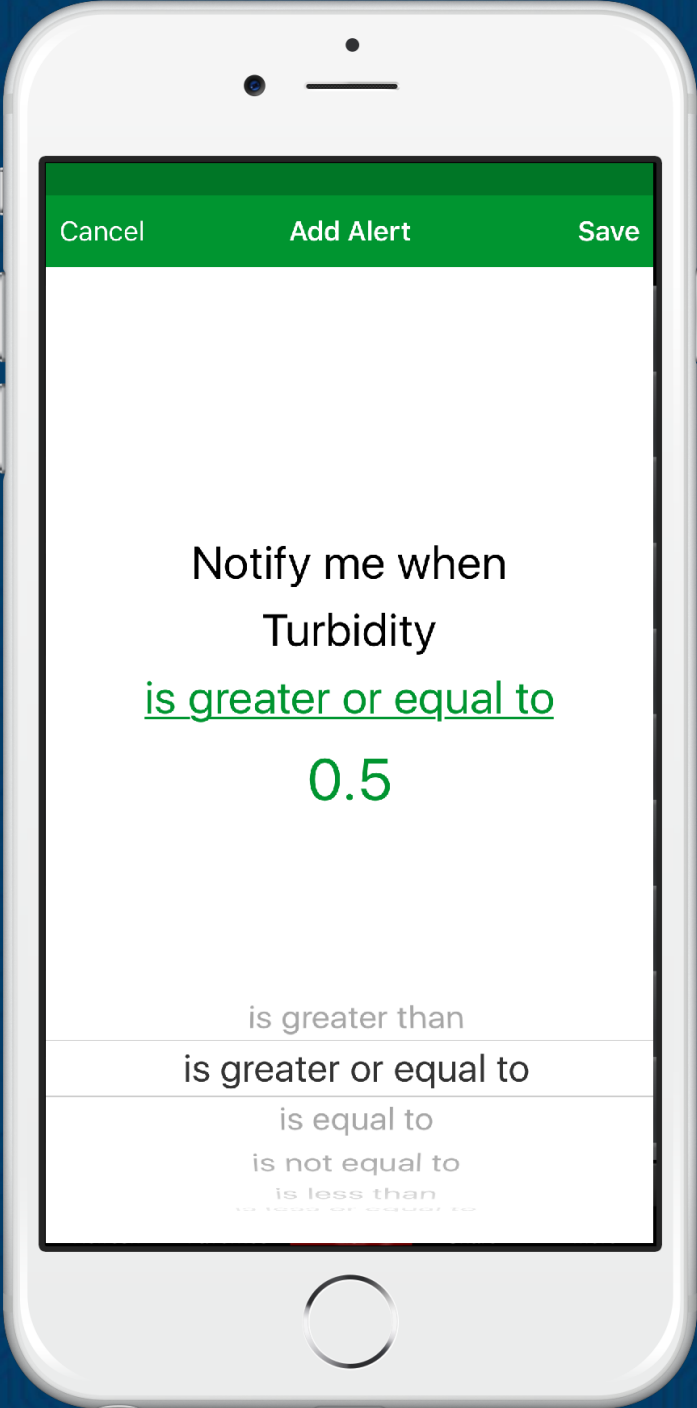
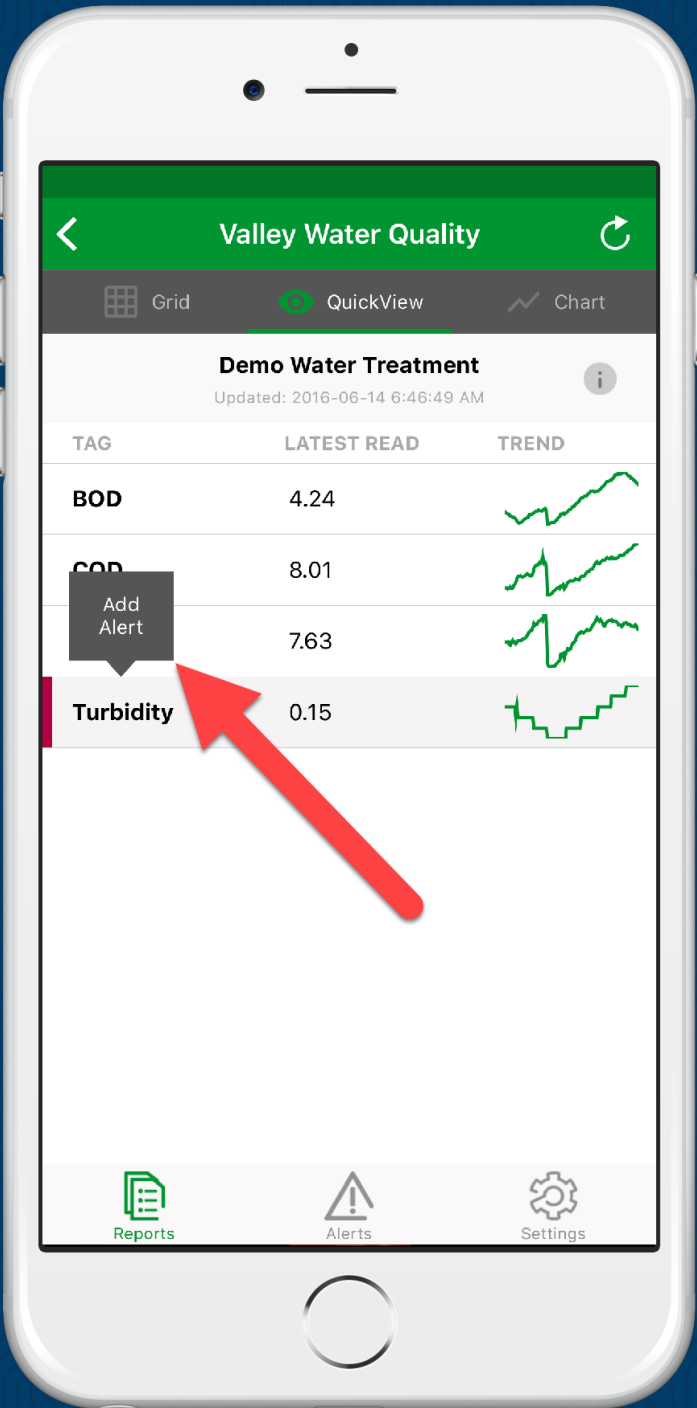
Plot up to six (6) tags



Toggle tags on/off

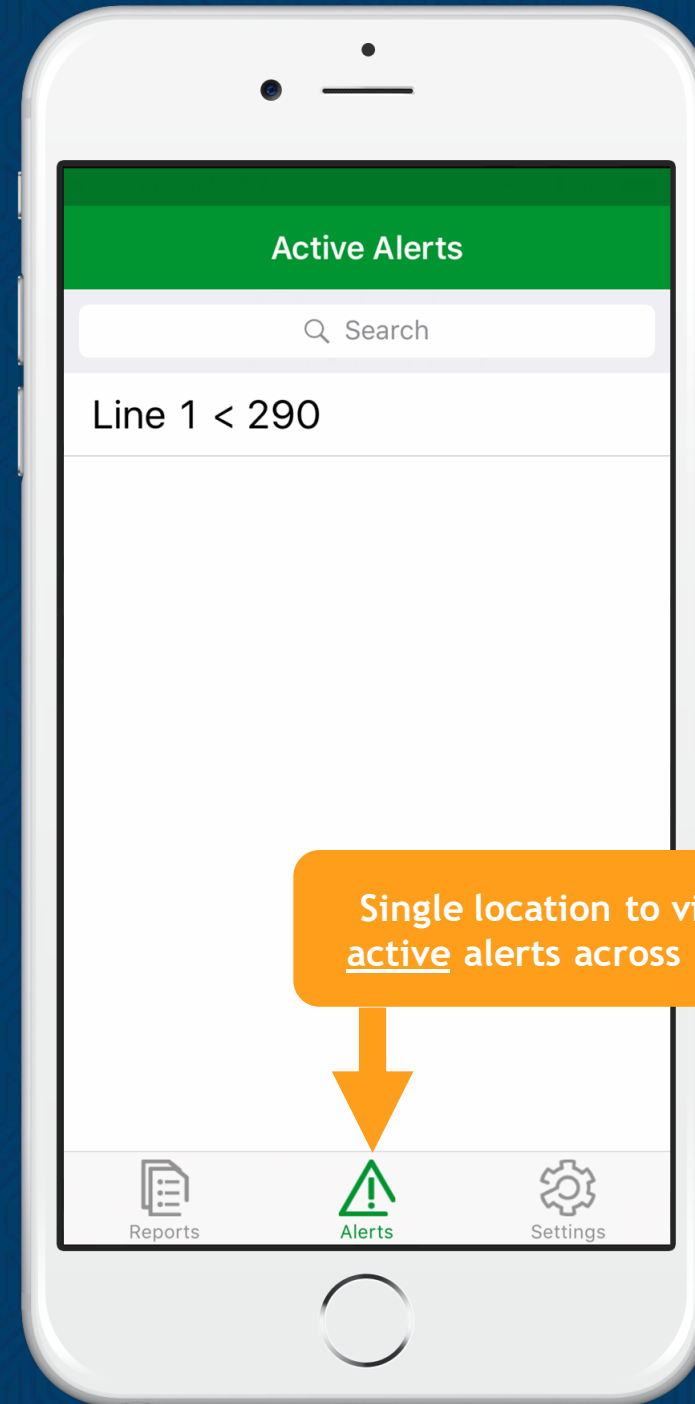
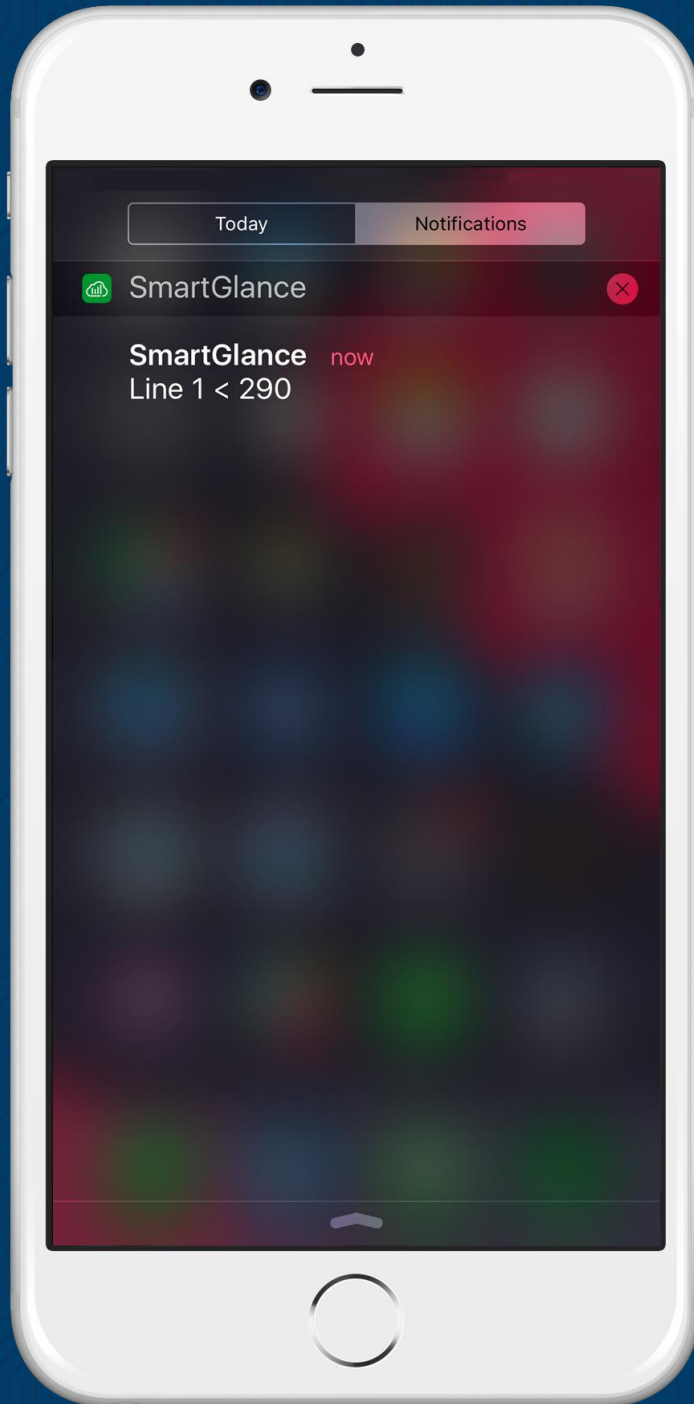


Mobile Dashboard Examples



Mobile Dashboard Examples

Configurable
push
notifications



Single location to view all
active alerts across reports



LEARN MORE AT [OPTELGROUP.COM](https://optelgroup.com)