

# Bank Reconciliation +

## Setup and User Guide for Microsoft Dynamics 365 Business Central



**succeedIT**  
clear approach, proven solutions

# Bank Reconciliation + Business Central

## Setup

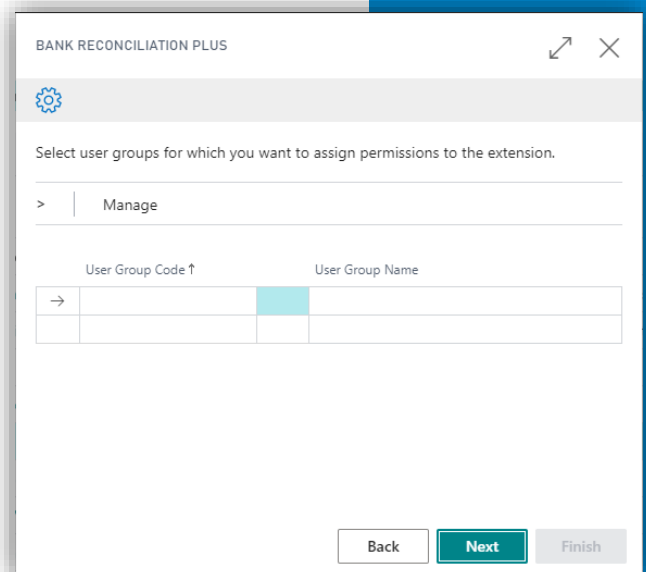
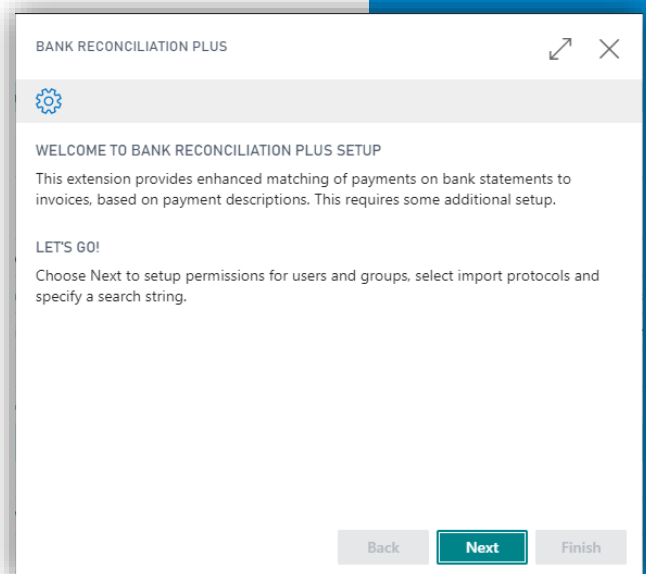
After installing the Bank Reconciliation Plus app for Microsoft Dynamics 365 Business Central start the Assisted Setup. Setup is fast and easy, you only need to setup authorizations and text recognition rules.

Go to **Assisted Setup** and select **Set up Bank Reconciliation Plus**. Click **Next** when you are ready to start configuration.

In the next screen you can select the User Groups to which you would like to give access.

If you do not want to give access on User Group level but rather on User level, you can leave this section empty and click **Next** to continue. In the following screen you can select the users who you would like to give access.

Click **Next** to continue.



# Bank Reconciliation + Business Central

Select for which import protocols you want to enable Bank Reconciliation Plus. Enabling this option will automatically apply data enrichment to your bank statement.

Click **Next** to continue.

BANK RECONCILIATION PLUS

Select import protocols for which you want to activate Bank Reconciliation Enrichment.

> | Manage

Code ↑	Description	Data Enrich...
RABO MUT.ASC	RABO-telebankieren (binnenl.)	<input type="checkbox"/>
RABO VVMUT.A...	RABO-telebankieren (buitenl.)	<input type="checkbox"/>
→ SEPA CAMT	SEPA CAMT-bankafschriften	<input checked="" type="checkbox"/>

Back Next Finish

In the next screen you may specify the rules that must be used to match the payments to invoices.

To help you set up your first rules we have provided a few examples at the bottom of this page.

Click **Next** and select **Finish** to finalize setup. You are now ready to use Bank Reconciliation Plus.

BANK RECONCILIATION PLUS

Please specify the rules that must be used to match the payments to invoices. The app uses these rules to recognize customer- and invoice numbers or text strings that match a general ledger account.

Type is used to determine if the payment is for an Invoice, Customer or G/L Account. Search String is used to determine what text needs to be searched for in the payment description. Search Argument Length is used to determine the length of the argument. Part of Key is used to determine if the Search String is part of the result. And in case when G/L Account is selected as Type you can insert the Account No. in the column Value. For examples please refer to the Setup and User Guide document.

> | Manage

Type ↑	Search String ↑	Search Argument Length	Part of Key	Value
→ Customer		0	<input type="checkbox"/>	

Back Next Finish

## Examples

Type = Customer    Search String = K    Search Argument Length = 6  
Part of Key = Yes    Result "K12345"

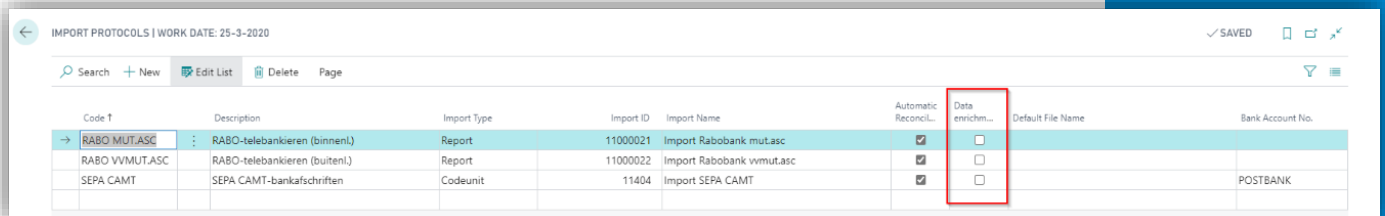
Type = Customer    Search String = K    Search Argument Length = 6  
Part of Key = No    Result "12345"

Type = Invoice    Search String = 10    Search Argument Length = 6  
Part of Key = Yes    Result "101234"

# Bank Reconciliation + Business Central

## User Guide

How does Bank Reconciliation Plus work? Simply navigate to **Import Protocols** in Business Central and check the box **Data Enrichment** for the protocols that you want to enable Bank Reconciliation Plus for.



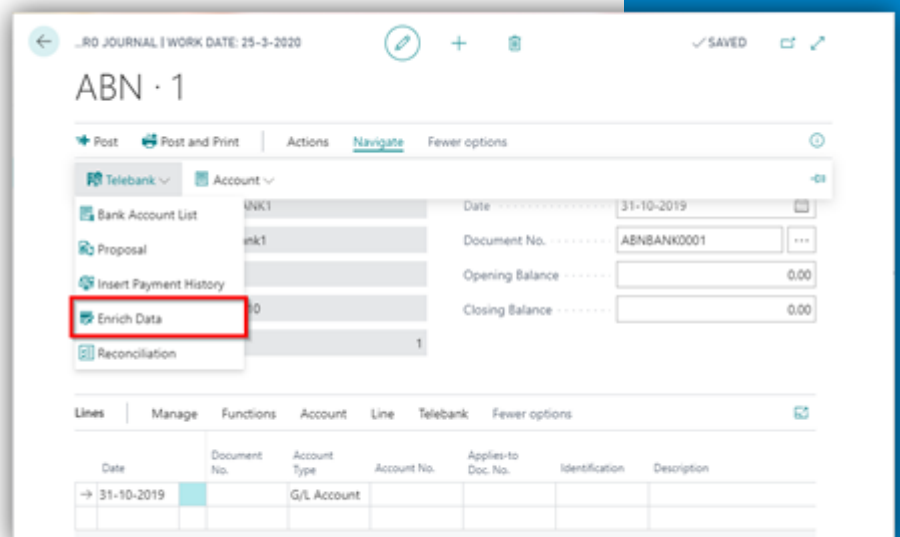
Code	Description	Import Type	Import ID	Import Name	Automatic Reconcil...	Data Enrichment	Default File Name	Bank Account No.
RABO MUT.ASG	RABO-telebankieren (binnenl.)	Report	11000021	Import Rabobank mut.asc	<input checked="" type="checkbox"/>	<input type="checkbox"/>		
RABO VVMUT.ASC	RABO-telebankieren (buitenl.)	Report	11000022	Import Rabobank vvmut.asc	<input checked="" type="checkbox"/>	<input type="checkbox"/>		
SEPA CAMT	SEPA CAMT-bankafschriften	Codeunit	11404	Import SEPA CAMT	<input checked="" type="checkbox"/>	<input type="checkbox"/>		POSTBANK

In this example we will explain how Bank Reconciliation Plus works for Business Central. Please note that this instruction applies to all import protocols.

1. Navigate to **Bank/Giro Journal**
2. Click **Actions**, select your import protocol and click **OK**
3. Select a file to import, a new journal template will be created
4. During import the Bank Reconciliation Plus
5. Open the newly created journal. The lines in the journal should automatically be matched based on your Bank Reconciliation Plus matching rules.

### Tip!

You can also manually start the matching process at any time by selecting **Enrich Data** through the menu.



ABN · 1

Post | Post and Print | Actions | Navigate | Fewer options

Telebank | Account

Bank Account List | UNK1 | Date | 31-10-2019

Proposal | unk1 | Document No. | ABNBANK0001

Insert Payment History | 0 | Opening Balance | 0.00

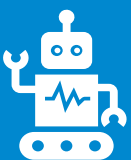
**Enrich Data** | 1 | Closing Balance | 0.00

Reconciliation

Lines	Manage	Functions	Account	Line	Telebank	Fewer options
Date	Document No.	Account Type	Account No.	Applies-to Doc. No.	Identification	Description
→ 31-10-2019		G/L Account				



Version: 16.15.05.2020



We would love to see you at our website for more information about SucceedIT and our products [www.succeedit.nl](http://www.succeedit.nl)