
A cross-company contact directory

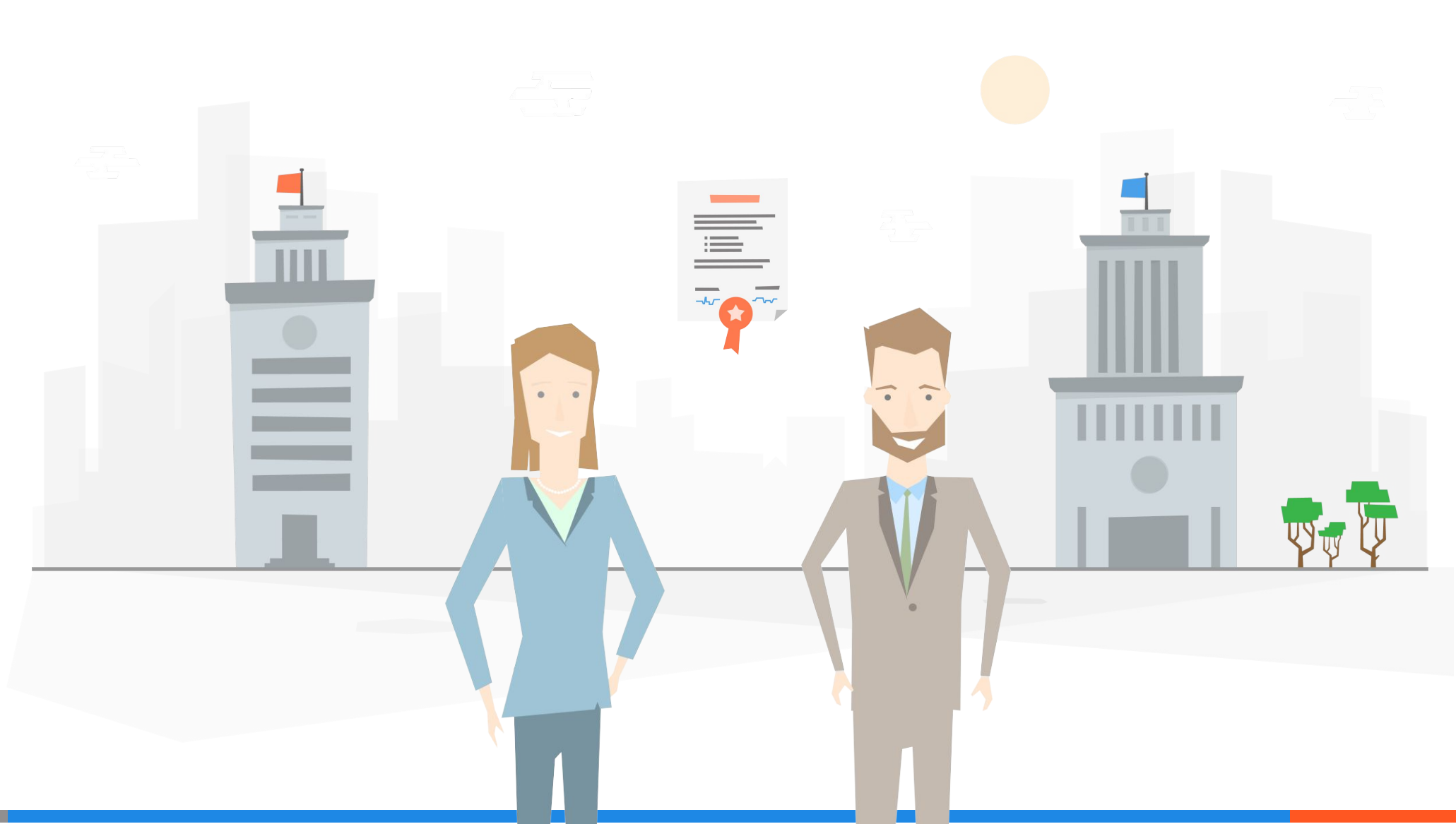


Agenda

- What's our product
- Partners
- Source / authenticate / presentation
- Company information & GDPR
- Trial and further steps

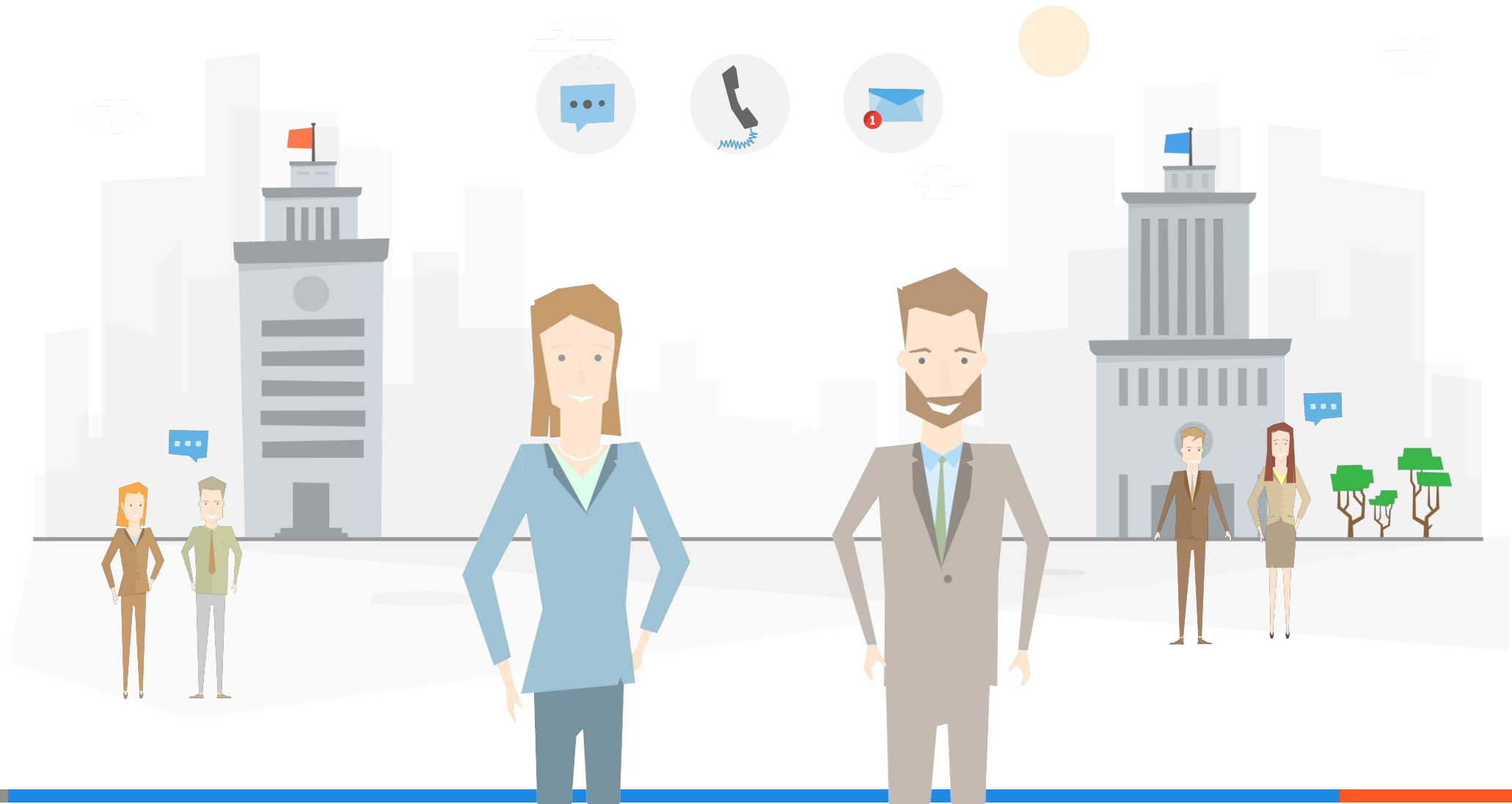


Collaboration between companies is the key to success



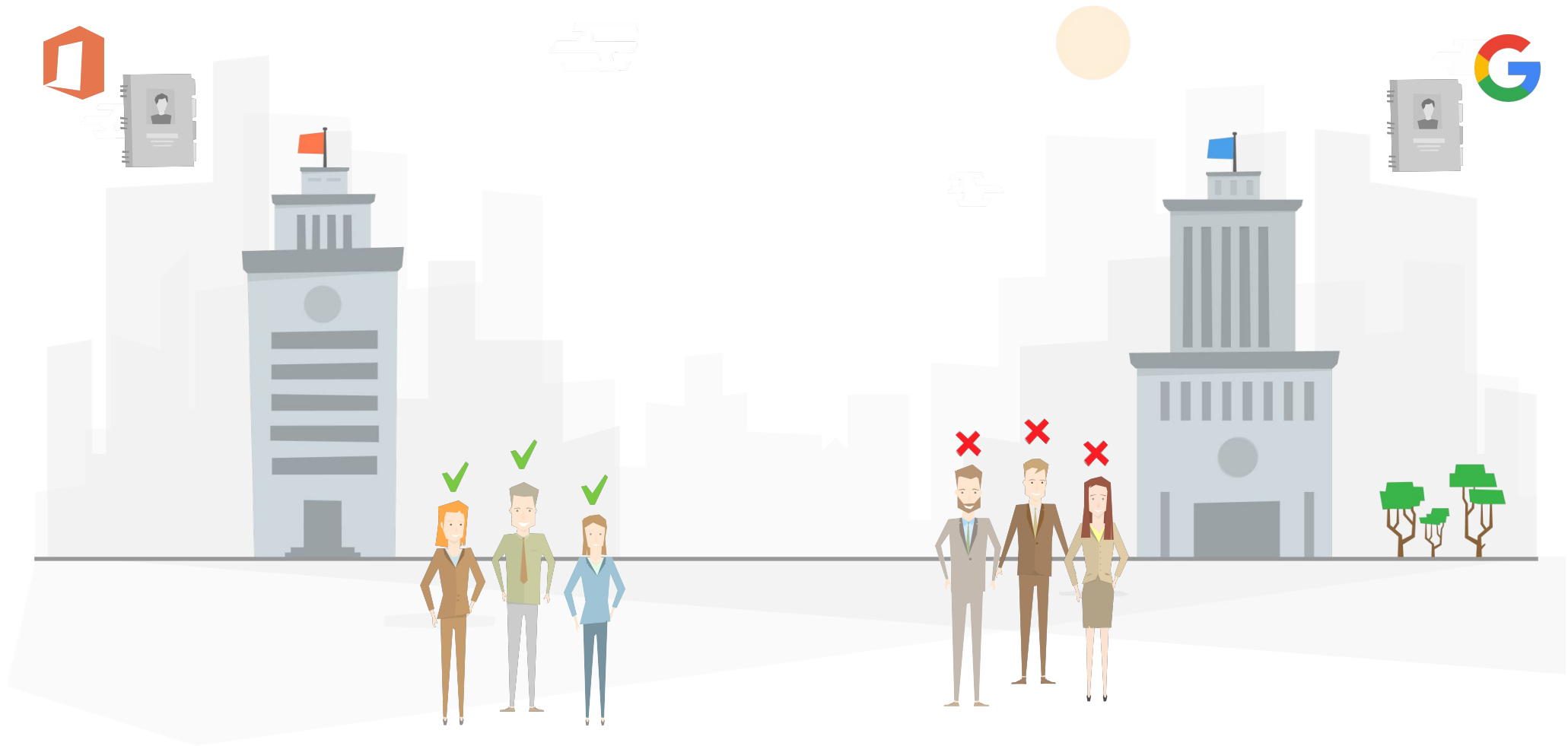


It starts with the ability to easily find and contact each other



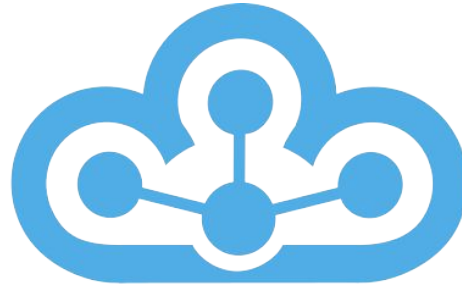


This is often harder than it should be





Introducing

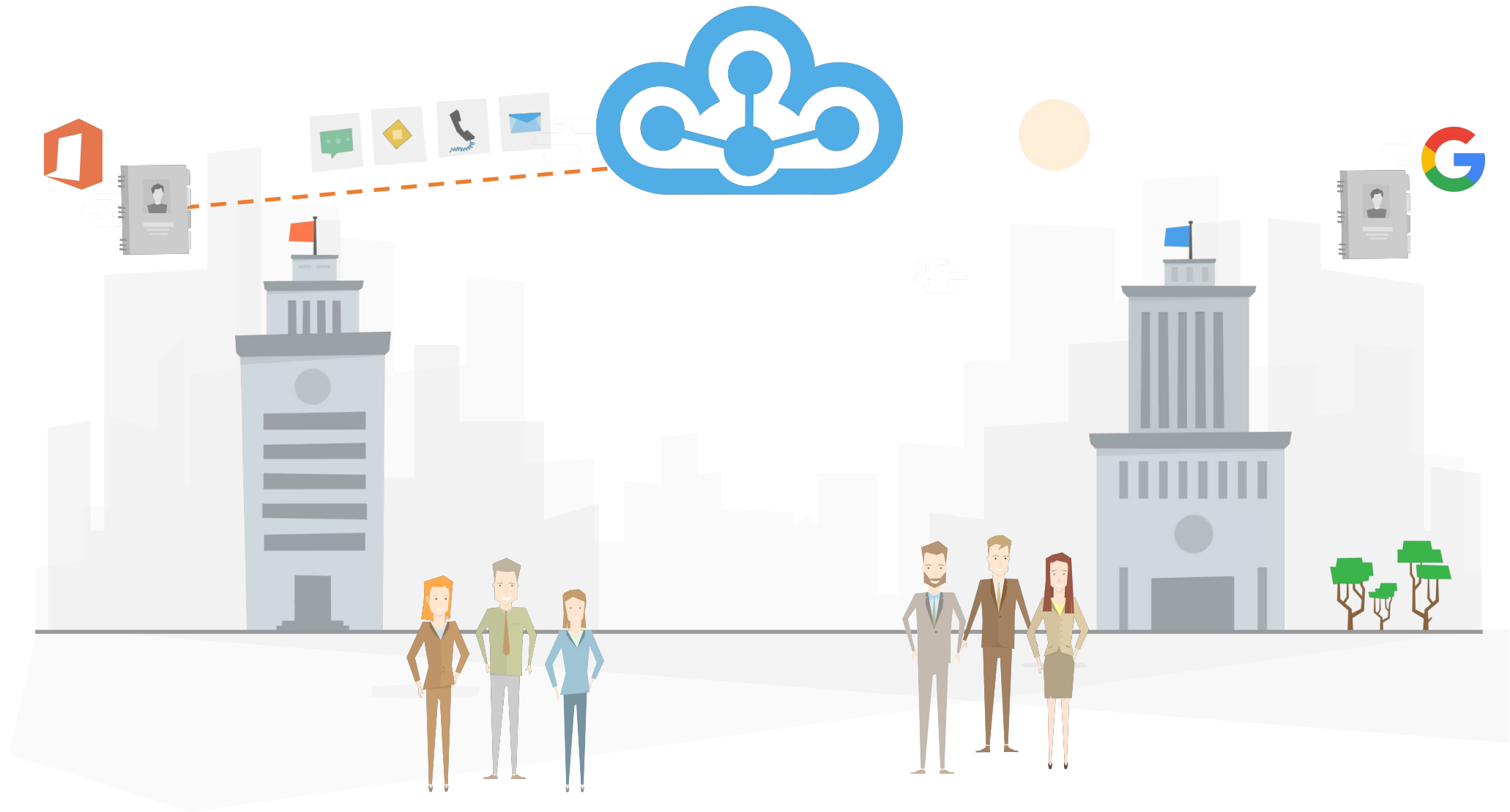


FederatedDirectory

open contacts



Step 1: Connect your current corporate address book





Step 2: Federate with other companies



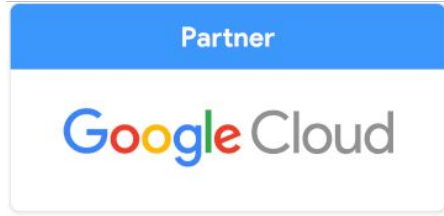


Step 3. Search your Federated Directory





To make this possible, we partnered with the best



Microsoft
Partner

okta

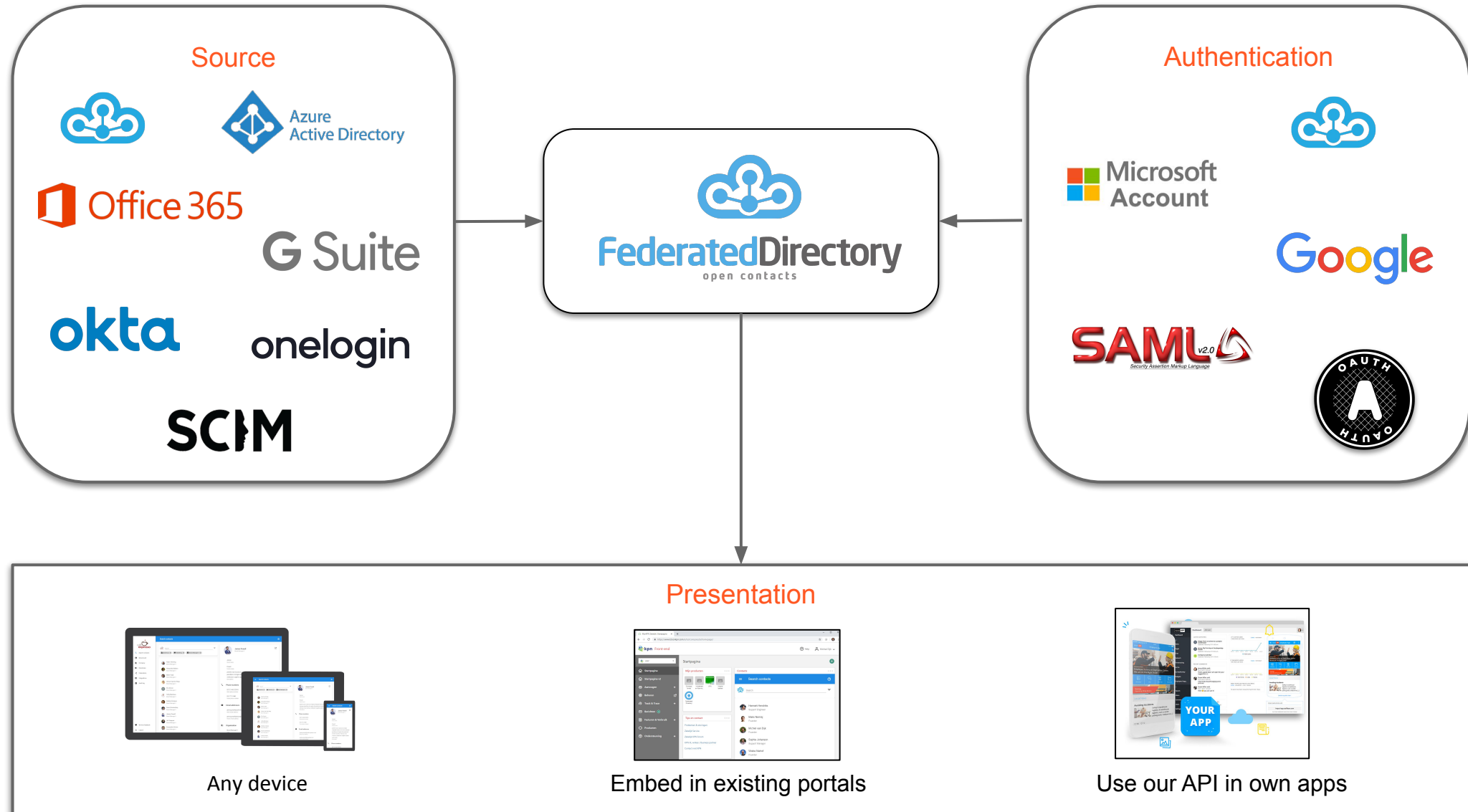
onelogin



We are always looking for more integration partners
<https://help.federated.directory/developer/getting-started>



Source, authentication and presentation possibilities





Presentation option: embed within existing intranet site

The screenshot shows a web browser window with the URL <https://www.tst.onkpn.com/a/testcompany3a/homepage/>. The page is titled "MijnKPN Zakelijk | Startpagina" and features the "kpn Front-end" logo. A user menu in the top right shows "Michiel Dijk".

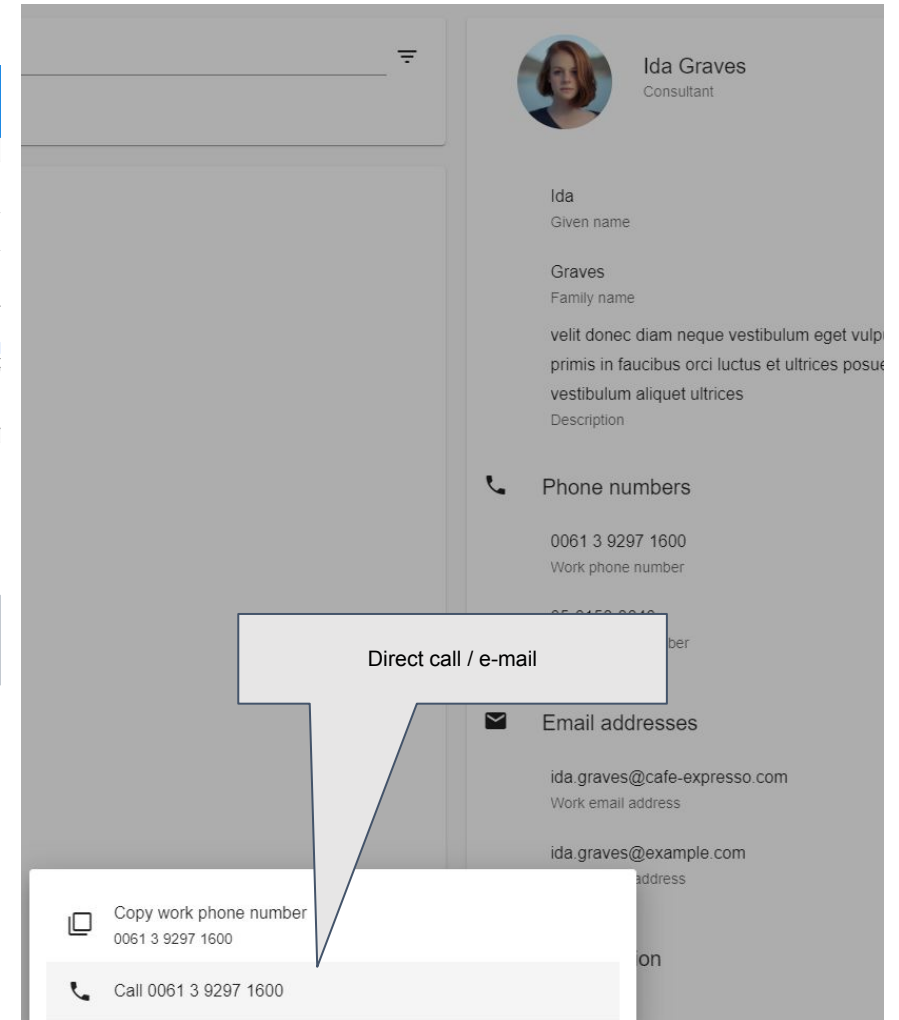
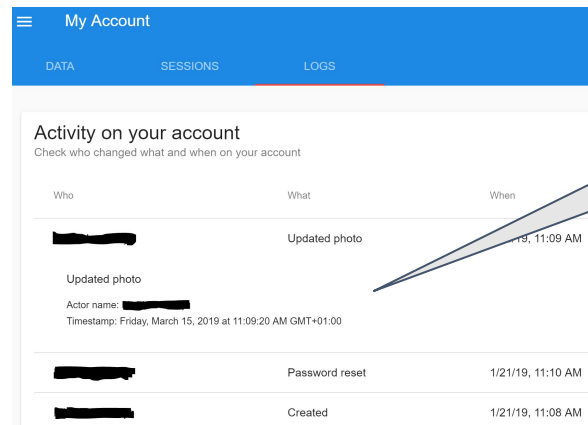
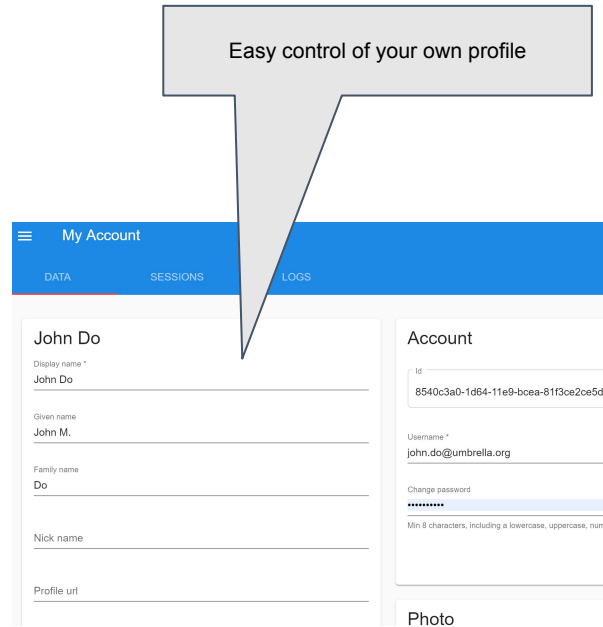
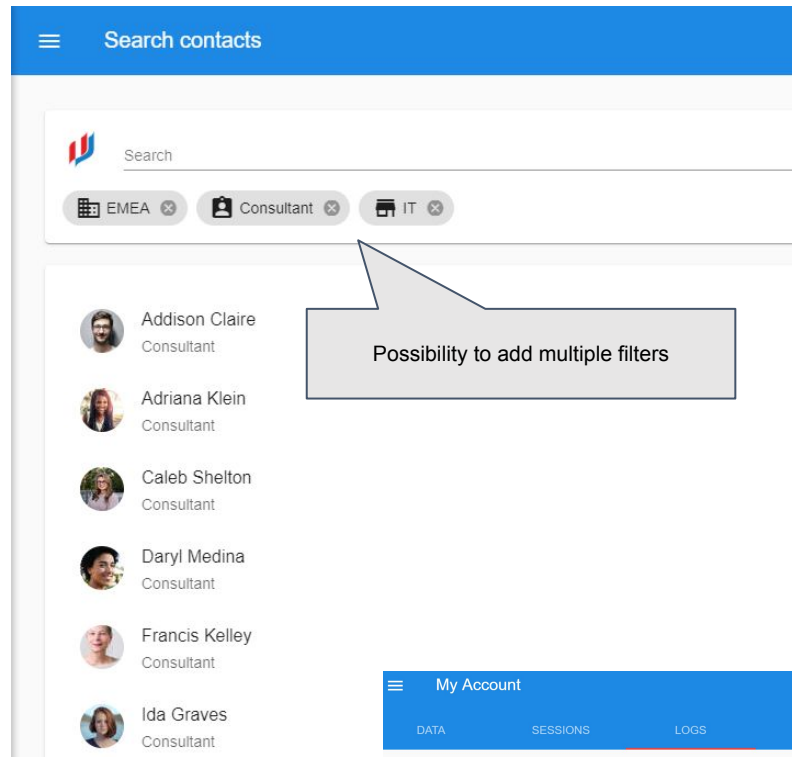
The main content area is divided into three sections:

- Startpagina**: A sidebar on the left with navigation links: Startpagina, Startpagina v2, Aanvragen, Beheren, Track & Trace, Berichten (3), Facturen & Verbruik, Producten, and Ondersteuning.
- Mijn producten**: A central section with a "Federated Directory" widget. A callout box points to this widget with the text "Link for Federated Directory".
- Contacts**: A right-hand section titled "Search contacts" with a search bar and a list of contacts: Hannah Hendriks (Support Engineer), Maks Nemisj (Founder), Michiel van Dijk (Founder), Sophie Johanson (Support Manager), and Wiebe Niehof (Founder). A callout box points to this section with the text "Integrate Federated Directory as 'widget'".

The "Federated Directory" widget is a blue circular icon with a white 'Q' inside, located in the "Mijn producten" section.

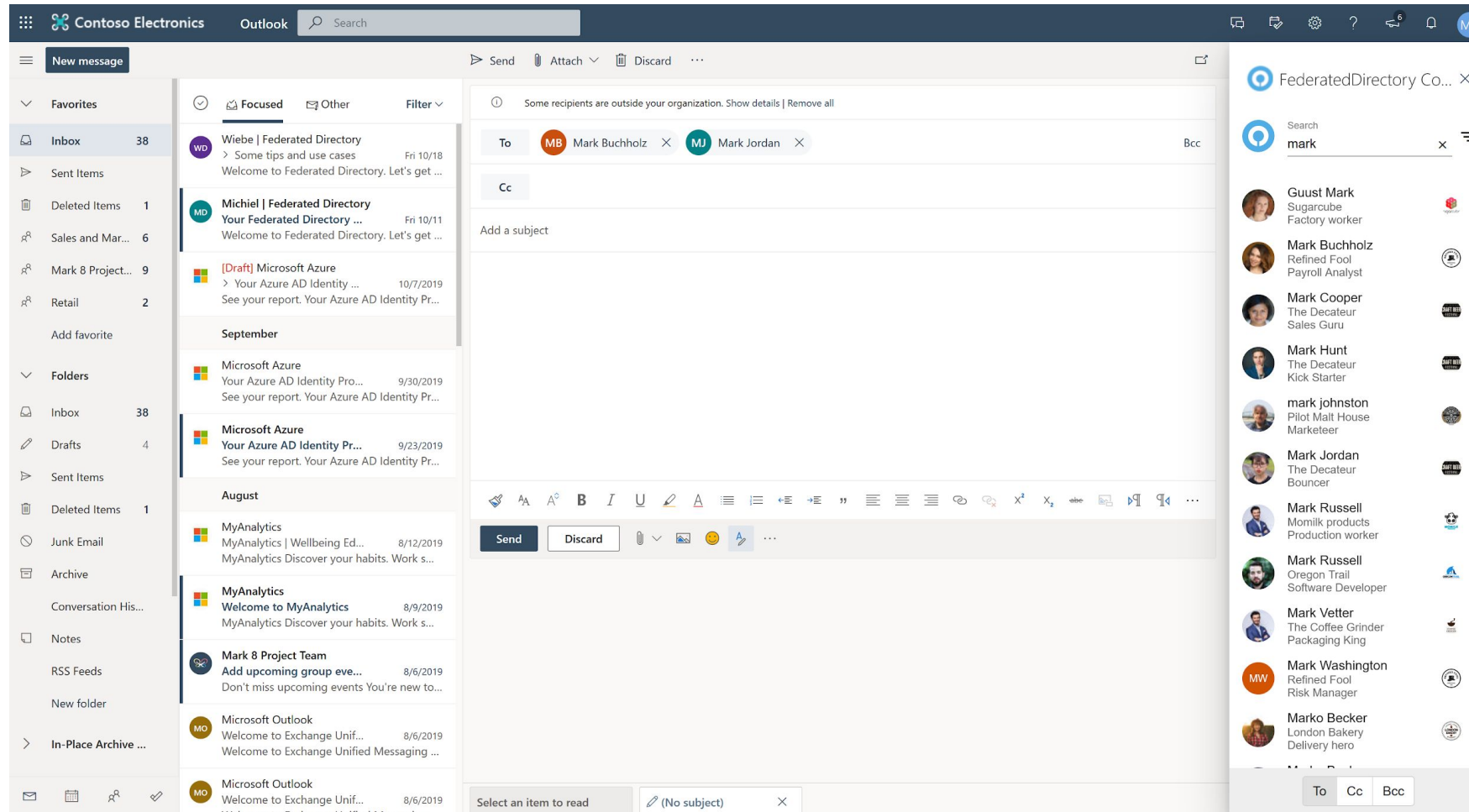


Presentation option: use of front-end from Federated Directory itself





Presentation option: Directly in Outlook



Enable once for all your users.
Works in Outlook Mail client and in the Web App (aka OWA)



Security, standards and privacy (GDPR)

- Hosted in Frankfurt
- All 'in flight' data encrypted.
128-bit AES for TLS 1.2 and
ECDHE_RSA Key Exchange Algorithm
- Database platform is SSAE 16, ISO 27001, PCI DSS v3.0 en HIPAA compliant
- DC's conform ISO 27001, 27017, 27018, SOC 1/2/3, PCI DSS, CSA STAR
- Privacy policy compliant with GDPR guidelines and regulations



ISO
27001



ISO
27017



ISO
27018



SOC 1/2/3



PCI DSS



CSA STAR



Easy to start, no obligations during trial

Start your 30 days trial period today:

<https://www.federated.directory/signup>

Or if you want to immediately integrate, start your trial through one of our partners:

<https://help.federated.directory/administrator/>

Let's federate!



Pricing

- 0,35\$ per user/per month (0,30EUR)
- invoiced on a yearly base (4,20\$ per user/per year)
- sliding scale discount (10% per 1k users, max. -50%) for large volumes



Implementation scenario

