

Expand your understanding of companies you work with and partnerships you are exploring. HitHorizons.com and our API enrich your software with data from various sources to provide you with a more complete and complex picture of the market, individual companies and their evolution over time.

Get essential data of over 60 million companies across more than 60 countries (including the whole Europe) via our API and web-based application

API which could be integrated into your softwares and applications



- **All European companies in one place, one language, one format**
- **AI-powered company name search** enriched with an autocomplete via name, ID or region eliminates the need to know or manually enter the exact company details
- **Quick evaluation of company size within the segment** via size ranking directly within your software
- **Automatic updates of company data within your software** check and correct data which has already been entered manually – this saves time and decreases the amount of potential manual entry mistakes

Access to HitHorizons.com platform provides additional insights



- **HitHorizons Screener** will get you the data you need for your market research and sector analyses
- **Detailed company profiles**, sector analyses and size rankings within individual segments
- **Sales and number of employees data** provide expanded company size rankings
- **An option of placing companies into diverse sectors and segments** offers additional analytical layers (region, industry, country, SIC CODE, etc.)

For more information & pricing contact us via email at ask@hithorizons.com.

HitHorizons provides data on companies from these countries

Western Europe

Belgium
France
Germany
Greenland
Ireland
Italy
Liechtenstein
Luxembourg
Malta
Monaco
Netherlands
San Marino
Switzerland
United Kingdom

Southwestern Europe

Andorra
Gibraltar

Portugal
Spain

Northern Europe

Denmark
Faroe Islands
Finland
Iceland
Norway
Sweden

Central Europe

Austria
Czech Republic
Hungary
Poland
Slovakia
Slovenia

Central Asia (former Soviet republics)

Kazakhstan
Kyrgyzstan
Tajikistan
Turkmenistan
Uzbekistan

Eastern Europe

Armenia
Azerbaijan
Belarus
Estonia
Georgia
Latvia
Lithuania
Moldova
Russian Federation
Ukraine

Southeast Europe

Albania
Bosnia and Herzegovina
Bulgaria
Croatia
Cyprus
Greece
Kosovo
Macedonia
Montenegro
Romania
Serbia
Turkey

HitHorizons API parameters

Company registration and industry data

- company name
- secondary name
- HitHorizons identifier
- national identifier (with type)
- registered address
 - street address
 - postal code, city
 - state / province
 - country
- business activity
- SIC: code, industry, division
- local activity code (with classification system)
- establishment of ownership (year)
- company type
- location type
- URL to company profile at HitHorizons.com

Sales data

- sales in EUR and USD
- sales in local currency (with local currency code)
- indication of the sales accuracy
- sales sector analyses (in EUR, defined by multiple combinations of location data and industry classification):
 - number of companies in sector
 - median sales in sector
 - minimum sales in sector
 - largest sales in sector
 - market size
 - HitHorizons company size ranking by sales
 - URL to complete sector sales analysis

Employees data

- number of employees in company
- indication of number of employees in company accuracy
- total and local number of employees in the business
- employees sector analyses (defined by multiple combinations of location data and industry classification):
 - number of companies in sector
 - median number of employees in sector
 - minimum number of employees in sector
 - maximum number of employees in sector
 - sum of the number of employees in sector
- HitHorizons company size ranking by the number of employees
- URL to complete sector employee's analyses

HITHORIZONS API DOCUMENTATION

1. API OVERVIEW

This technical guide will help you how to make requests through endpoints to search the database and to retrieve data on companies via HitHorizons API.

Basic technical information:

- HitHorizons API is built using Azure API Management service
- Retrieved data are available in JSON format

2. COUNTRIES DATA COVERAGE

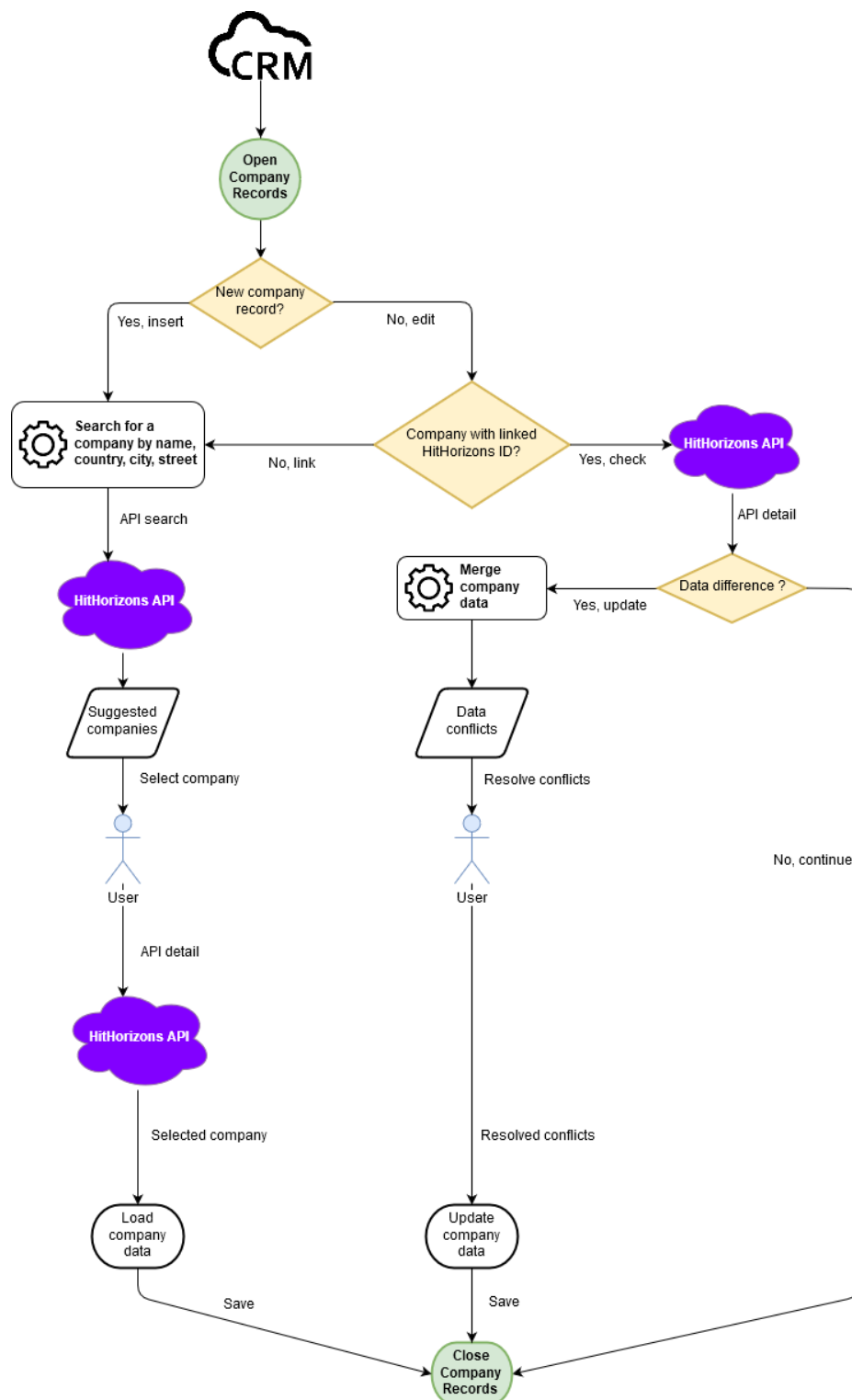
HitHorizons API provides data about companies from Europe and Central Asia. We provide analyses by country or by following regions:

- **eu27 (European Union countries):** Austria, Belgium, Bulgaria, Croatia, Cyprus, Czech Republic, Denmark, Estonia, Finland, France, Germany, Greece, Hungary, Ireland, Italy, Latvia, Lithuania, Luxembourg, Malta, Netherlands, Poland, Portugal, Romania, Slovakia, Slovenia, Spain, Sweden
- **noneu27 (European countries outside the European Union):** Albania, Andorra, Belarus, Bosnia and Herzegovina, England, Faroe Islands, Gibraltar, Greenland, Iceland, Kosovo, Liechtenstein, Macedonia, Moldova, Monaco, Montenegro, Norway, Northern Ireland, San Marino, Scotland, Serbia, Switzerland, Ukraine, Wales
- **asia (Central Asia countries):** Armenia, Azerbaijan, Georgia, Kazakhstan, Kyrgyzstan, Russian Federation, Tajikistan, Turkey, Turkmenistan, Uzbekistan

[Data properties are described here](#) in details.

3. HOW IT WORKS – USE CASE EXAMPLE

Following diagram shows the use case of API integration into CRM system and the process of making company record in CRM system via API.



4. GETTING STARTED

[HitHorizons API developer portal is available here](#). In order to make requests, you will need to receive an API subscription key. To get one, please follow the guide [Getting started](#) with more detailed instructions. Once you get your API subscription key, you can make requests via endpoints.

[Register to test the API here](#).

5. API CONVENTIONS & QUOTAS

While using HitHorizons API, you should take into account these basic rules:

- All requests need to be authenticated using API key obtained from the Developer Portal. The API key is sent in HTTP header `Ocp-Apim-Subscription-Key`.
- Response data is wrapped in an envelope containing the following fields:
 - `Success` [bool]: Indicates whether the call was successful.
 - `Error` [string]: In case of error, contains an error description.
 - `Result`: Actual data returned from the API.
- The API rate quotas:
 - Minute: 30 requests
 - Daily trial: 10 requests
 - Daily: 20 000 requests
 - Monthly: 500 000 requests

5.1. Response after exceeding rate limit

After exceeding the rate limit (30 requests per minute), the following response is returned:

```
HTTP/1.1 429 Too Many Requests
Content-Length: 84
Content-Type: application/json
Retry-After: 12

{
  "statusCode": 429,
  "message": "Rate limit is exceeded. Try again in 12 seconds."
}
```

The response indicates that the client can't access the API for a period of time indicated in the `Retry-After` header (in seconds). Textual description of the issue is returned in the `message` field in the response body.

After receiving this response, the `message` should be displayed to the user until the `Retry-After` is fulfilled.

5.2. Response after exceeding quota

After exceeding the daily or monthly quota, the following response is returned:

```
HTTP/1.1 403 Quota Exceeded (Daily)
Content-Length: 551

{
  "statusCode": 403,
  "message": "You have exceeded your HitHorizons daily API quota.",
  "linkText": "Ask for a higher quota »",
  "link": "https://www.hithorizons.com/services/api/api-daily-quota-exceeded",
  "popupTitle": "HitHorizons API quota exceeded",
  "popupMessage": "You have exceeded your daily API quota: 20 000 requests.\n\nGet the higher API quota for continuous work with the European companies' data within {integrationName}.",
  "popupLinkText": "Inquire now",
  "popupLink": "https://www.hithorizons.com/services/api/api-daily-quota-exceeded",
  "subscriptionid": "5efa324543fd361210d2e76a"
}
```

- The status code is 403 (Forbidden).
- The status message indicates that the quota was exceeded. The message always starts with *"Quota Exceeded"*, with additional information about which quota was exceeded appended to the message:
 - Quota Exceeded (Daily)
 - Quota Exceeded (Monthly)
 - Quota Exceeded (Daily Trial)
- The body contains the following fields:
 - `statusCode`: 403
 - `message`: Message to be permanently shown to the user.
 - `linkText`: Label of a link or button to be shown next to the message.

- `link`: Destination URL to navigate to after clicking the link/button with the above label.
 - `popupTitle`: Title of a popup window to display to the user.
 - `popupMessage`: Message to be shown to the user in a popup window.
 - `popupLinkText`: Label of a link or button to be shown next to the message to the user in a popup window.
 - `popupLink`: Destination URL to navigate to after clicking the link/button in a popup window with the above label.
 - `subscriptionId`: ID of the subscription. This can be used for identifying the customer account.
- The texts can contain the placeholder `{integrationName}`, which should be replaced by the software where HitHorizons API is integrated, e.g. Dynamics 365.
 - The texts can contain newline characters (`\n`) which should be interpreted and shown as new lines.
 - The messages returned are relevant for the quota or limit that was exceeded. They will be different for daily/monthly quotas and for license expiration.
 - The body object structure will always be as described here.

After receiving this response, the `message` and the `linkText` should be displayed to the user until the `statusCode` is equal to 403. The `linkText` should be displayed as a hyperlink to the website in the `link`.

The `popupMessage` with the `popupTitle` should be displayed to the user in the pop-up window as soon as the quota is exceeded. The `popupLinkText` serves as a button on a pop-up window and is linked to `popupLink`.

6. API ENDPOINTS

You can retrieve the company data from HitHorizons database by using these API endpoints:

- `/Company/Get` – Company profile
- `/Company/Search` – Company search
- `/Company/SearchUnstructured` – Company search using unstructured query

6.1. ENDPOINT #1: /COMPANY/GET

This endpoint enables you to retrieve data related to a single company identified by HitHorizons company ID. Response contains a complete data about a single company. Note that you can obtain HitHorizons company ID by using `/Company/search` endpoint or `/Company/SearchUnstructured` endpoint.

6.1.1. Request parameters

Following parameter is required to make a query. Note that you can obtain HitHorizons company ID by using the `/Company/search` endpoint or `/Company/SearchUnstructured` endpoint.

HitHorizonsId	string	A unique company identification number assigned by HitHorizons to each company in database. The structure of HitHorizons ID is following: H-[CC][SC][7DIGITS] [CHECK DIGIT]. Detailed explanation is available here.
----------------------	--------	--

6.1.2. Request headers

To make a query, it is required to insert API subscription key into the header:

Ocp-Apim-Subscription-Key	string	Subscription key which provides access to this API.
----------------------------------	--------	---

6.1.3. Response properties

The table below shows the complete list of retrieved properties related to a single company in the response and their descriptions. To interpret the values of the properties, look at reference documents below:

- [HitHorizons API Code lists](#) - including activity code types, currency codes, legal structure code list, national ID type code list, industry classification code list, SIC activity code list.
- [HitHorizons API Sector Analyses](#) - Sales and employee statistics are returned for various sectors. Look at the explanation in linked document.

CompanyDetailResult		
HitHorizonsId	string	A unique company identification number assigned by HitHorizons to each company in database. The structure of HitHorizons ID is following: H-[CC][SC][7DIGITS] [CHECK DIGIT] Detailed explanation is available here.

DUNSNumber	string	9-digit non-indicative identification number assigned by D&B company.
CompanyName	string	Official name of the company
CompanySecondaryName	string	Secondary name, trade name or brand of the company, if used
AddressStreetLine1	string	Physical location of the company as referred to local authority (e.g. Business register), generally stated in local language.
AddressStreetLine2	string	Physical location of the company as referred to local authority (e.g. Business register), generally stated in local language.
PostalCode	string	Postal or zip code for the physical location.
City	string	Name of the city where the company is located. Generally, in local language.
StateProvince	string	Name of the state/province, or county where the company is located. Generally, in local language.
Country	string	Name of the country in English where the business is located.
NationalId	string	Company identification number officially assigned and used in some countries for company incorporation and tax collection.
NationalIdType	string	Code that identifies the type of national ID number system used, for example '12' = CRO, '14' = Siren. A table describing each code value is available here.
SICText	string	Narrative description in English of the operations or activities of the business also known as line of business. Relates to the four-digit primary SIC code which is the 1987 U.S. government code.
SICCode	string	Standard industrial classification code system categorizes business establishments according to the type of business activities. The SIC code of a parent/ultimate may include the activities of its subsidiaries. Some of the countries use different industrial classification (e.g. NACE). All inputs are converted to SIC Code as closely as possible.
Industry	string	Code of the SIC division, e.g. Agriculture, forestry and fishing.

LocalActivityCode	string	This code represents the locally used activity code. Examples include 1972 U.S. SIC, SBA, APE, and NACE.
LocalActivityCodeType	string	Describes a specific activity code by system and/or component (Canadian government SIC, U.S. government two-digit 1977 SIC code). A table of codes values is available here. For example, '60' = U.S. 1972 format.
EstablishmentOfOwnership	integer	A four-digit number representing the year that current ownership took control or the incorporation year if no control change took place.
SalesLocal	double	Annual sales for the business in local currency. See currency code to determine currency used. Signed decimal field.
SalesAccuracyIndicator	string	A code value which describes the reliability of the annual sales figure. 0 - actual 1 - low end of the range 2 - estimated (all records) or not available when sales are greater than zero (all records) or modeled 3 - modeled blank - not available when SalesLocal equal 0.
SalesUSD	double	Sales for the business in U.S. dollars. Currency exchange rate is updated once a year. Signed decimal field.
SalesEUR	double	Sales for the business in Euro. Currency exchange rate is updated once a year. Signed decimal field.
HitHorizonsSalesAnalysis	SalesSector array	Analyses based on data on sales with different views on the market size and company size. Analyses contains various metrics – median, min, max.
LocalCurrency	string	Code indicating in which currency the annual sales is expressed. Table is available here. For example, '0620' = Czech koruna
EmployeesNumber	integer	The number of employees in company.

EmployeesNumberAccuracyIndicator	string	A code value which describes the reliability of the employees' number. 0 - actual 1 - low end of the range 2 - estimated (all records) or not available when sales are greater than zero (all records) or modeled 3 - modeled blank - not available when EmployeesNumber equal 0.
EmployeesNumberLocal	integer	The number of employees at this location.
EmployeesNumberLocalAccuracyIndicator	string	A code value which describes the reliability of the employees' local. 0 - actual 1 - low end of the range 2 - estimated (all records) or not available when sales are greater than zero (all records) or modeled 3 - modeled blank - not available when EmployeesNumberLocal equal 0.
EmployeesNumberTotal	integer	The total number of employees in the business.
EmployeesNumberTotalAccuracyIndicator	string	A code value which describes the reliability of the employees' total. 0 - actual 1 - low end of the range 2 - estimated (all records) or not available when sales are greater than zero (all records) or modeled 3 - modeled blank - not available when EmployeesNumberTotal equal 0.
HitHorizonsEmployeesAnalysis	Employees Sector array	Analyses based on data on number of employees with different views on the market size and company size. Analyses contains various methrics – median, min, max.
CompanyType	integer	Legal status of this company. Table is available here.
LocationType	integer	This code indicates whether the business is: 0 = Single Location - no other entities report to it 1 = Headquarter/Parent - branches and/or subsidiaries report to it 2 = Branch - secondary location to a headquarter

		Note: It is possible to have a single location subsidiary or a headquarter subsidiary. A headquarters can also be a parent with subsidiaries. The code is blank when not available.
HitHorizonsCompanyProfileURL	string	URL to the company profile at HitHorizons.com.

HitHorizons Sales Analysis

SalesAnalysisSectorId	string	A unique sales sector identification assigned by HitHorizons. Values in this ID define sector filtering criteria, e.g. ID "country-industry BELGIUM-G" tells us that only companies operating in Belgium and industry G are included in the sector analysis.
SalesAnalysisStateProvince	string	This value is filled with name of the state/province where company is located in the case of including company state/province in filtering criteria. This value is empty when state/province is not included in filtering criteria.
SalesAnalysisCountry	string	This value is filled with name of the country where company is located in the case of including company's country in filtering criteria. This value is empty when country is not included in filtering criteria.
SalesAnalysisRegion	string	This value is filled with name of the region where company is located in the case of including company's region in filtering criteria. This value is empty when region is not included in filtering criteria.
SalesAnalysisSICCode	string	This value is filled with name of the SIC Code where company is located in the case of including company's SIC Code in filtering criteria. This value is empty when SIC Code is not included in filtering criteria.
SalesAnalysisIndustry	string	This value is filled with name of the industry where company is located in the case of including company's industry in filtering criteria. This value is empty when industry is not included in filtering criteria.
SalesAnalysisCompanyCount	integer	Number of companies in the sector.
SalesAnalysisCurrency	string	Currency used in analyses – euro.

SalesAnalysisMedian	double	Median value of sales in the sector analysis.
SalesAnalysisMin	double	Minimum value of sales in the sector analysis.
SalesAnalysisMax	double	Maximum value of sales in the sector analysis.
SalesAnalysisMarketSize	double	Sum of sales in sector analysis representing market size
HitHorizonsSalesSizeRanking	integer	Single number indicating which decile the company belongs to in the sector. 1 is the lowest decile, 10 is the highest decile.
CompleteSectorSalesAnalysis URL	string	URL to complete sector sales analysis at HitHorizons.com.

HitHorizons Employees Analysis

EmployeesAnalysisSectorId	string	A unique employees sector identification number assigned by HitHorizons, e.g. "country-industry BELGIUM-G" tells us that only companies operating in Belgium and industry G are included in the sector analysis.
EmployeesAnalysisStateProvince	string	This value is filled with name of the state/province where company is located in the case of including company's state/province in filtering criteria. This value is empty when state/province is not included in filtering criteria.
EmployeesAnalysisCountry	string	This value is filled with name of the country where company is located in the case of including company's country in filtering criteria. This value is empty when country is not included in filtering criteria.
EmployeesAnalysisRegion	string	This value is filled with name of the region where company is located in the case of including company's region in filtering criteria. This value is empty when region is not included in filtering criteria.
EmployeesAnalysisSICCode	string	This value is filled with name of the SIC Code where company is located in the case of including company's SIC Code in filtering criteria. This value is empty when SIC Code is not included in filtering criteria.
EmployeesAnalysisIndustry	string	This value is filled with name of the industry where company is located in the case of including company's industry in

		filtering criteria. This value is empty when industry is not included in filtering criteria.
EmployeesAnalysisCompany Count	integer	Number of employees in the sector.
EmployeesAnalysisMedian	double	Median number of employees in sector analysis.
EmployeesAnalysisMin	double	Minimum number of employees in sector analysis.
EmployeesAnalysisMax	double	Maximum number of employees in sector analysis.
EmployeesAnalysisSum	double	Sum of the number of employees in sector analysis representing market size
HitHorizonsEmployeesSizeRanking	integer	Single number indicating which decile the company belongs to in the sector. 1 is the lowest decile, 10 is the highest decile.
CompleteSectorEmployeesAnalysisURL	string	URL to complete sector employees' analysis at HitHorizons.com.

6.1.4. Example request

In this example, we make a query to retrieve information on a single company identified under HitHorizons number D-361339110 through `/Company/Get` endpoint. API Subscription key must be submitted:

```
GET https://api.hithorizons.com/Company/Get?hitHorizonsId=D-361339110 HTTP/1.1
Host: api.hithorizons.com
Ocp-Apim-Subscription-Key: *****
```

6.1.5. Example response

The structure of the response to our query is below. In order to interpret the object values, take a look at reference documents [HitHorizons API Code lists](#), [HitHorizons API Sector Analyses](#).

```
Content-Type: application/json; charset=utf-8
{
  "Success": true,
```

```

"Error": null,
"Result": {
  "HitHorizonsId": "H-SK0001511351",
  "DUNSNumber": "361339110",
  "CompanyName": "FinStat, s. r. o.",
  "CompanySecondaryName": "",
  "AddressStreetLine1": "Ludmily Kraskovskej 1402/14",
  "AddressStreetLine2": "",
  "PostalCode": "85110",
  "City": "Bratislava",
  "StateProvince": "Bratislavský kraj",
  "Country": "SLOVAKIA",
  "NationalId": "47165367",
  "NationalIdType": "00740",
  "SICText": "Management consulting services",
  "SICCode": "8742",
  "Industry": "I",
  "LocalActivityCode": "7022",
  "LocalActivityCodeType": "360",
  "EstablishmentOfOwnership": 2013,
  "SalesLocal": 784563.0,
  "LocalCurrency": "5080",
  "SalesAccuracyIndicator": "0",
  "SalesUSD": 898188.0,
  "SalesEUR": 784563.0,
  "HitHorizonsSalesAnalysis": {
    "ALL": {
      "SalesAnalysisSectorId": "ALL",
      "SalesAnalysisStateProvince": null,
      "SalesAnalysisCountry": null,
      "SalesAnalysisRegion": null,
      "SalesAnalysisSICCode": null,
      "SalesAnalysisIndustry": null,
      "SalesAnalysisCompanyCount": 71183789,
      "SalesAnalysisCurrency": "EUR",
      "SalesAnalysisMedian": 87289.0,
      "SalesAnalysisMin": 0.0,
      "SalesAnalysisMax": 5792894719033.0,
      "SalesAnalysisMarketSize": 135444560297958.0,
      "HitHorizonsSalesSizeRanking": 10,
      "CompleteSectorSalesAnalysisURL":
"https://www.hithorizons.com/eu/companies/H-SK0001511351/finstat-s-r-
o/salesAnalyses#detail-analysis-all"
    },...
  }
}

```

6.2. ENDPOINT #2: /COMPANY/SEARCH

This endpoint enables you to search the company database by using **structured** query. In query, various request parameters can be used. Response contains search results and additional data on company/companies included in search results.

Request parameters

The following table shows request parameters that can be used in query. [Here is the List of countries](#) that can be used in the "Country" field.

DUNSNumber (optional)	string	9-digit non-indicative identification number assigned by D&B company.
CompanyName (optional)	string	Official name of the company
NationalId (optional)	string	Company identification number officially assigned and used in some countries for company incorporation and tax collection.
AddressUnstructured (optional)	string	Physical location of company as referred to local authority (e.g. Business register) generally stated in a local language. Unstructured.
AddressStreet (optional)	string	Physical location of company as referred to local authority (e.g. Business register) generally stated in a local language.
City (optional)	string	Name of the city where the company is located. Generally, in local language.
StateProvince (optional)	string	Name of the state/province, or county where the company is located. Generally, in local language.
Country (optional)	string	Name of the country in English where the business is located.
ShowBranches (optional)	boolean	When false, only companies indicated as single-location or headquarters are returned (LocationType = 0 or 1). Also, companies with type Branch (CompanyType = 143) are excluded. When true, all companies are returned. When not specified, false is use by default.
CompanyTypes (optional)	integer array	Array of company types to return. When not supplied, only the following company types are returned: 0, 3, 10, 11, 12, 13, 14, 100, 102, 107, 151, 154, 160, 167

		Refer to the HitHorizons API Code lists (companyType) for the values applicable for this field.
MaxResults (optional)	integer	Maximum of 100 results is supported. 20 when not supplied.

6.2.1. Request headers

To make a query, it is required to insert API subscription key into the header:

Ocp-Apim-Subscription-Key	string	Subscription key which provides access to this API.
----------------------------------	--------	---

6.2.2. Response properties

The following tables show the list of retrieved properties in the response and their descriptions. To interpret values of properties, take a look at [HitHorizons API Code lists](#) for "Industry".

CompanySearchResponse		
Results	CompanySearchResult array	
ResultsCount	integer	Number of companies returned in the response (field results)
TotalCount	integer	Number of all companies matching the query

CompanySearchResult		
HitHorizonsId	string	A unique company identification number assigned by HitHorizons to each company in database. The structure of HitHorizons ID is following: H-[CC][SC][7DIGITS] [CHECK DIGIT]. Detailed explanation is available here.
DUNSNumber	string	9-digit non-indicative identification number assigned by D&B company.

CompanyName	string	Official name of the company
CompanySecondaryName	string	Secondary name, trade name or brand of the company, if used.
AddressStreetLine1	string	Physical location of company as referred to local authority (e.g. Business register), generally stated in a local language.
AddressStreetLine2	string	Physical location of company as referred to local authority (e.g. Business register), generally stated in a local language.
PostalCode	string	Postal or zip code for the physical location.
City	string	Name of the city where the company is located. Generally, in local language.
StateProvince	string	Name of the state/province, or county where the company is located. Generally, in local language.
Country	string	Name of the country in English where the business is located.
NationalId	string	Company identification number officially assigned and used in some countries for company incorporation and tax collection.
Industry	string	Code of the SIC division, e.g. Agriculture, forestry and fishing.
EstablishmentOfOwnership	string	A four-digit number representing the year that current ownership took control or the incorporation year if no control change took place. Not available on branch records.
SalesEUR	double	Sales for the business in EUR. Currency exchange rate is updated once a year. Signed decimal field.
EmployeesNumber	integer	The number of employees in company.
CompanyProfileURL	string	URL to the company profile at HitHorizons.com

6.2.3. Example request

In this example, we make a query to search companies named Finstat through `/Company/Search` endpoint. API subscription key must be submitted:

```
GET https://api.hithorizons.com/Company/Search?CompanyName=Finstat HTTP/1.1
Host: api.hithorizons.com
Ocp-Apim-Subscription-Key: .....
```

6.2.4. Example response

The structure of the response to our query is below. In order to interpret the object values, take a look at reference documents [HitHorizons API Code lists](#) (industry).

```
Content-Type: application/json; charset=utf-8
{
  "Success": true,
  "Error": null,
  "Result": {
    "Results": [
      {
        "HitHorizonsId": "H-SK0001511351",
        "DUNSNumber": "361339110",
        "CompanyName": "FinStat, s. r. o.",
        "CompanySecondaryName": "",
        "AddressStreetLine1": "Ludmily Kraskovskej 1402/14",
        "AddressStreetLine2": "",
        "PostalCode": "85110",
        "City": "Bratislava",
        "StateProvince": "Bratislavský kraj",
        "Country": "SLOVAKIA",
        "NationalId": "47165367",
        "Industry": "I",
        "EstablishmentOfOwnership": 2013,
        "SalesEUR": 784563.0,
        "EmployeesNumber": 9,
        "CompanyProfileURL": "https://www.hithorizons.com/eu/companies/H-SK0001511351/finstat-s-r-o"
      },
      ...
    ],
    "ResultsCount": 19,
    "TotalCount": 19
  }
}
```

6.3. ENDPOINT #3: /COMPANY/SEARCHUNSTRUCTURED

This endpoint enables you to search the company database by using **unstructured** query. It is well applied when you have incomplete data on companies in your system and you need to complete them all.

6.3.1. Request parameters

Table shows requests parameters that can be used in query. [Here is the List of countries](#) that can be used in the "Address" field.

Ids (optional)	string	All type of company IDs should be requested – HitHorizons number, DUNS number or national ID.
Name (optional)	string	Name of the company
Address (optional)	string	Physical location of company as referred to local authority (e.g. Business register) generally stated in a local language.
ShowBranches (optional)	boolean	When false, only companies indicated as single-location or headquarters are returned (LocationType = 0 or 1). Also, companies with type Branch (CompanyType = 143) are excluded. When true, all companies are returned. When not specified, false is use by default.
CompanyTypes (optional)	integer array	Array of company types to return. When not supplied, only the following company types are returned: 0, 3, 10, 11, 12, 13, 14, 100, 102, 107, 151, 154, 160, 167 Refer to the HitHorizons API Code lists (companyType) for the values applicable for this field.
MaxResults (optional)	integer	Maximum of 100 results is supported. 20 when not supplied.

6.3.2. Request headers

To make a query, it is required to insert API subscription key into the header:

Ocp-Apim-Subscription-Key	string	Subscription key which provides access to this API.
----------------------------------	--------	---

6.3.3. Response properties

The list and description of response properties is the same as in the case of endpoint #2: `/Company/Search`. To interpret values of properties, take a look at [HitHorizons API Code lists](#) for "Industry"

6.3.4. Example request

```
GET https://api.hithorizons.com/Company/SearchUnstructured?Name=Finstat HTTP/1.1
Host: api.hithorizons.com
Ocp-Apim-Subscription-Key: .....
```

6.3.5. Example response

The response is the same as in the case of the endpoint #2: `/Company/Search`, example below:

```
Content-Type: application/json; charset=utf-8
{
  "Success": true,
  "Error": null,
  "Result": {
    "Results": [
      {
        "HitHorizonsId": "H-SK0001511351",
        "DUNSNumber": "361339110",
        "CompanyName": "FinStat, s. r. o.",
        "CompanySecondaryName": "",
        "AddressStreetLine1": "Ludmily Kraskovskej 1402/14",
        "AddressStreetLine2": "",
        "PostalCode": "85110",
        "City": "Bratislava",
        "StateProvince": "Bratislavský kraj",
        "Country": "SLOVAKIA",
        "NationalId": "47165367",
        "Industry": "I",
        "EstablishmentOfOwnership": 2013,
        "SalesEUR": 784563.0,
        "EmployeesNumber": 9,
        "CompanyProfileURL": "https://www.hithorizons.com/eu/companies/H-SK0001511351/finstat-s-r-o"
```

```

    },
    ...
  ],
  "ResultsCount": 20,
  "TotalCount": 21
}
}

```

7. HITHORIZONS ID STRUCTURE

We have assigned a unique company identification number – HitHorizons ID - to each company in our database. The structure of HitHorizons ID is following:



For example: **H-DE0019345275**

HitHorizons ID consists of these elements:

- **HH-:** Prefix, identifying HitHorizons ID.
- **CC:** ISO 3166 alpha-2 (two-letter) country code.
- **SC:** Alphanumeric subdivision code.
 - Currently reserved for future use, only value 00 or 01 is used.
 - In cases when existing companies within one country do not fit in the space provided by the subsequent digits, the value is 01.
- **7DIGITS:** 7-digit number.
- **CHECK DIGIT:** "mod 11" check digit.
 - Computed so that multiplying each digit by its position in the number (counting from the right) and taking the sum of these products modulo 11 is 0.
 - The digit the farthest to the right (which multiplied by 1) is the check digit, chosen to make the sum correct.
 - If its value is 10, the value is skipped and not assigned.
- The check digit is computed in the same way as [ISBN 10 check digit](#).

API Version history

Current version of API: **v1.0.1**

List of API versions

Date	Version Number	Change description
June 2020	1.0.1	<p>New parameters:</p> <ul style="list-style-type: none">• EmployeesNumberLocal• EmployeesNumberLocal AccuracyIndicator <p>Changes:</p> <ul style="list-style-type: none">• Region eu28 renamed to eu27• Region noneu28 renamed to noneu27• Countries reassigned to noneu27: England, Gibraltar, Northern Ireland, Scotland and Wales
October 2019	1.0.0	Version 1 of the API launched

Technical support

For technical support please contact us via email support@hithorizons.com.