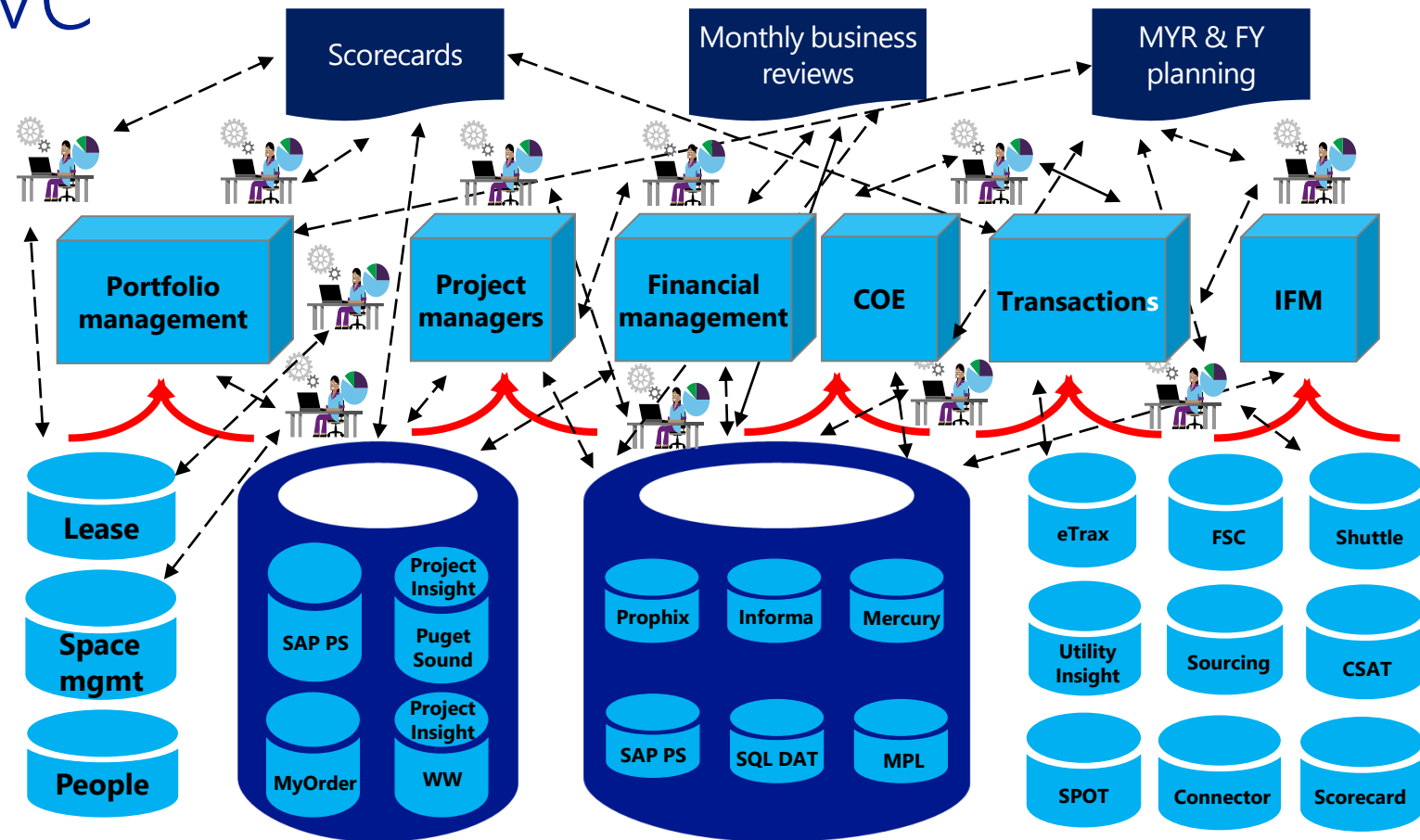


IT expert roundtable: Creating business intelligence with Azure SQL Database



The problem to solve



Distributed, unofficial, redundant and/or disconnected data stores for reporting

Multiple versions for the same hierarchies and **inconsistent data definitions**

Existing tools have **process gaps** and don't support end-to-end business needs

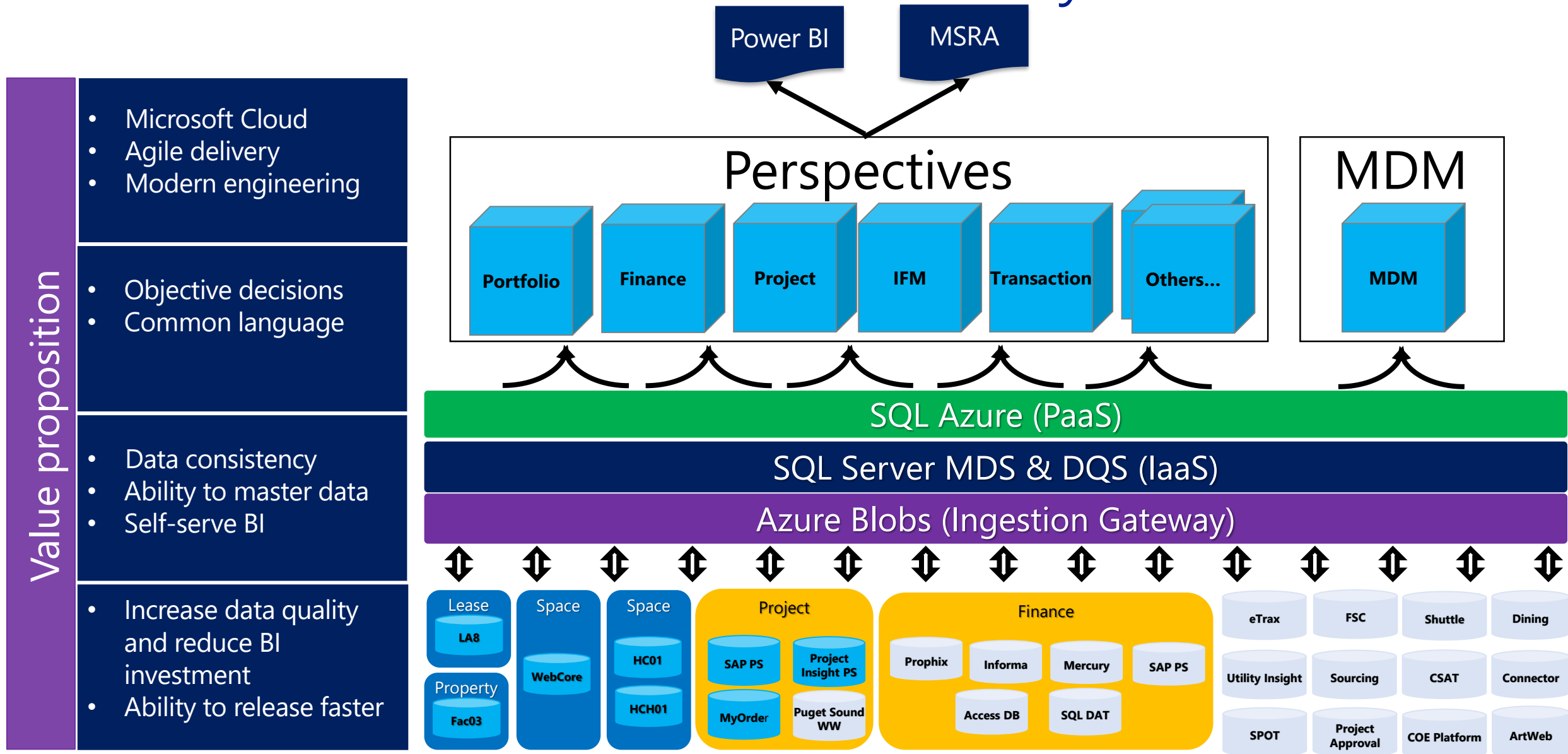
Limited data reuse and **low reporting quality** due to lack of end-to-end integration

Numerous ad-hoc investments on data sources and systems to solve similar problems

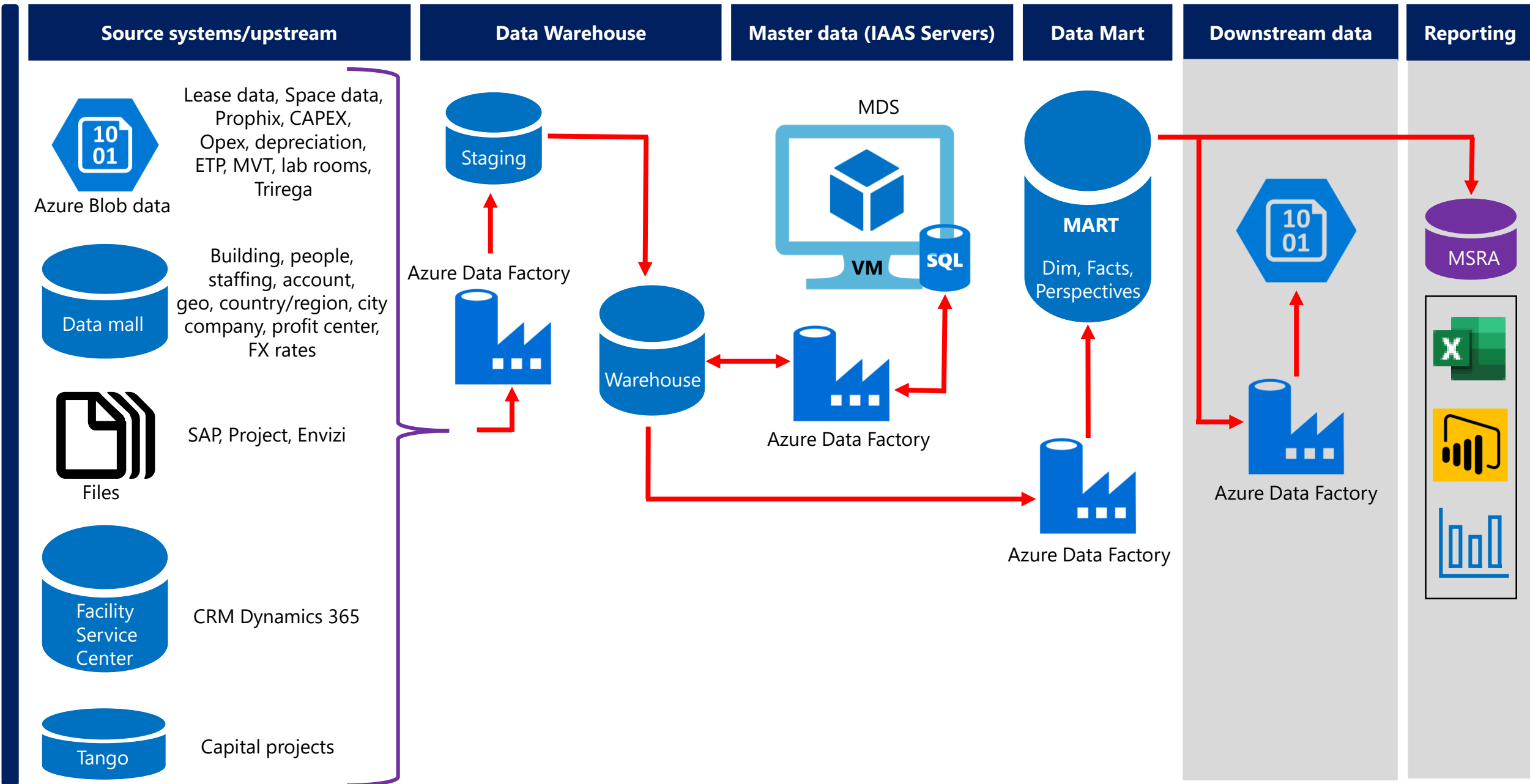
Manual efforts – multiple redundant and manual efforts **to interpret data**

An inefficient BI Ecosystem

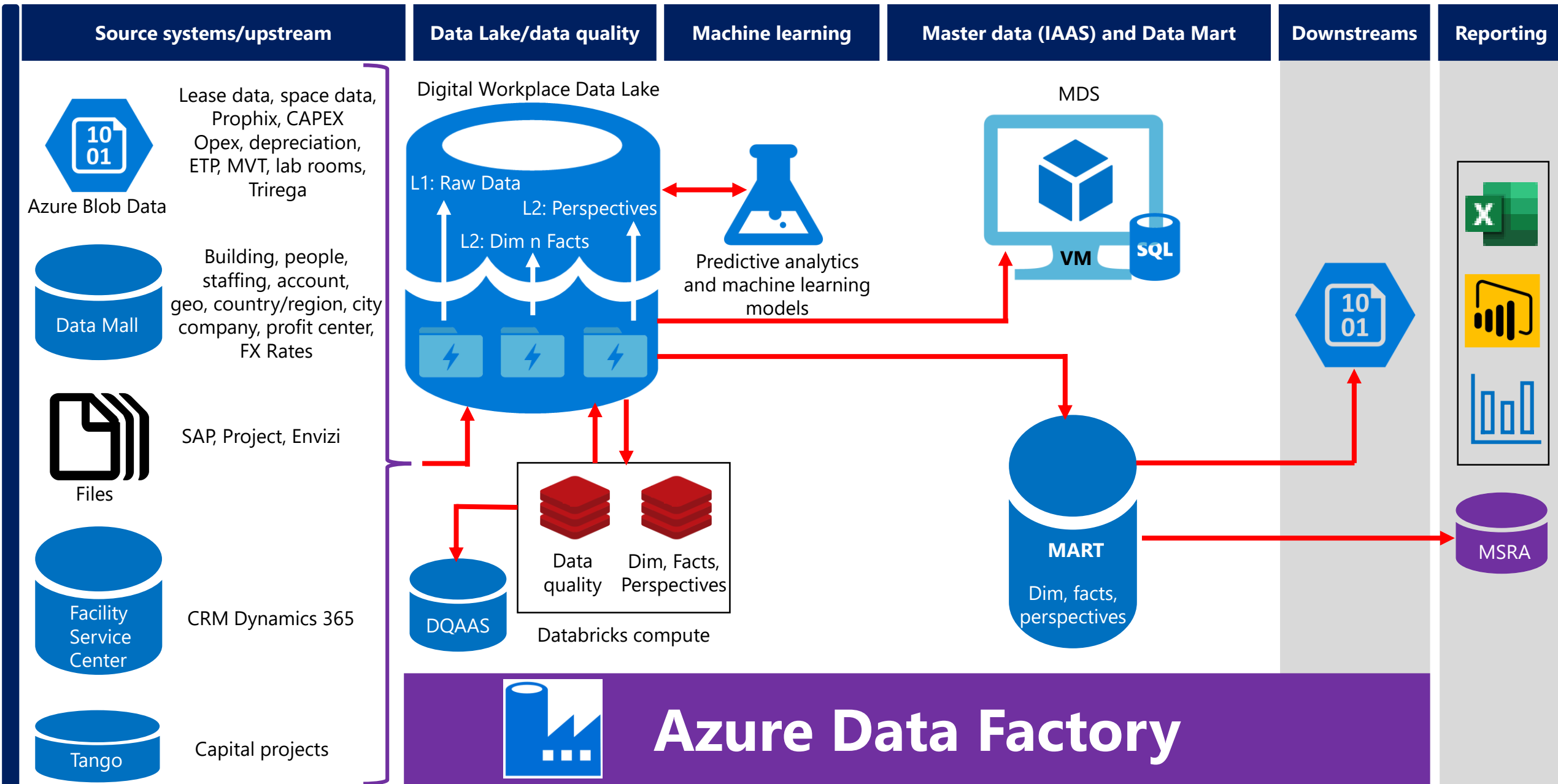
The solution...an efficient BI ecosystem



Current data-warehouse solution architecture and working model



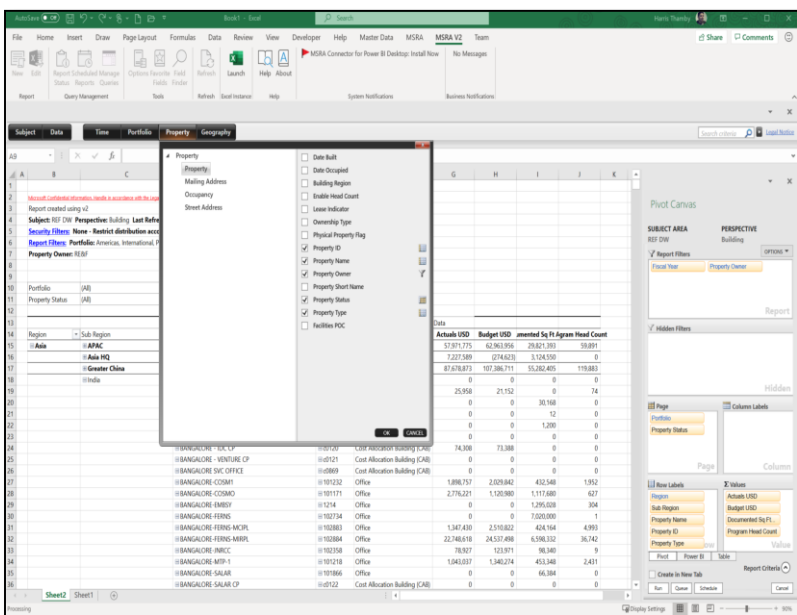
Future data-warehouse solution architecture and working model



Current reporting options

MSRA

- Microsoft internal Excel add-in for reporting
- Context-relevant menus to select/filter multiple hierarchy + build desired report to execute



SQL

- Direct SQL access to REFMart database for exploration, analysis

Power BI

- Accessing and publishing thru Power BI – local and global

Project Variance report

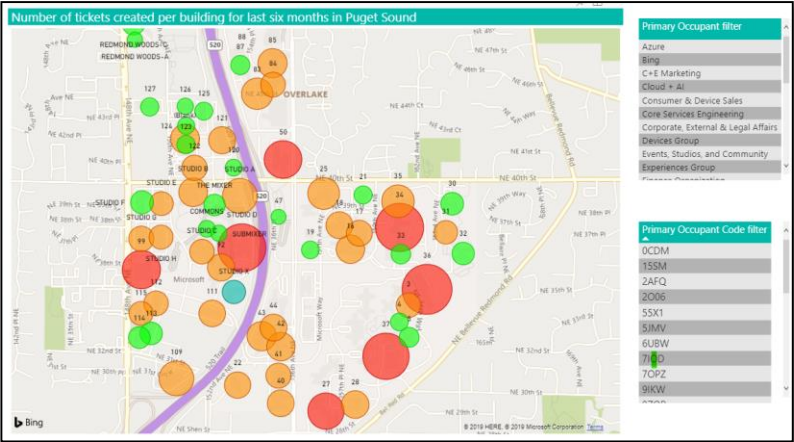


Project Gantt

For more info: [Intro to REF DW MSRA](#)

Machine learning insights and explorations

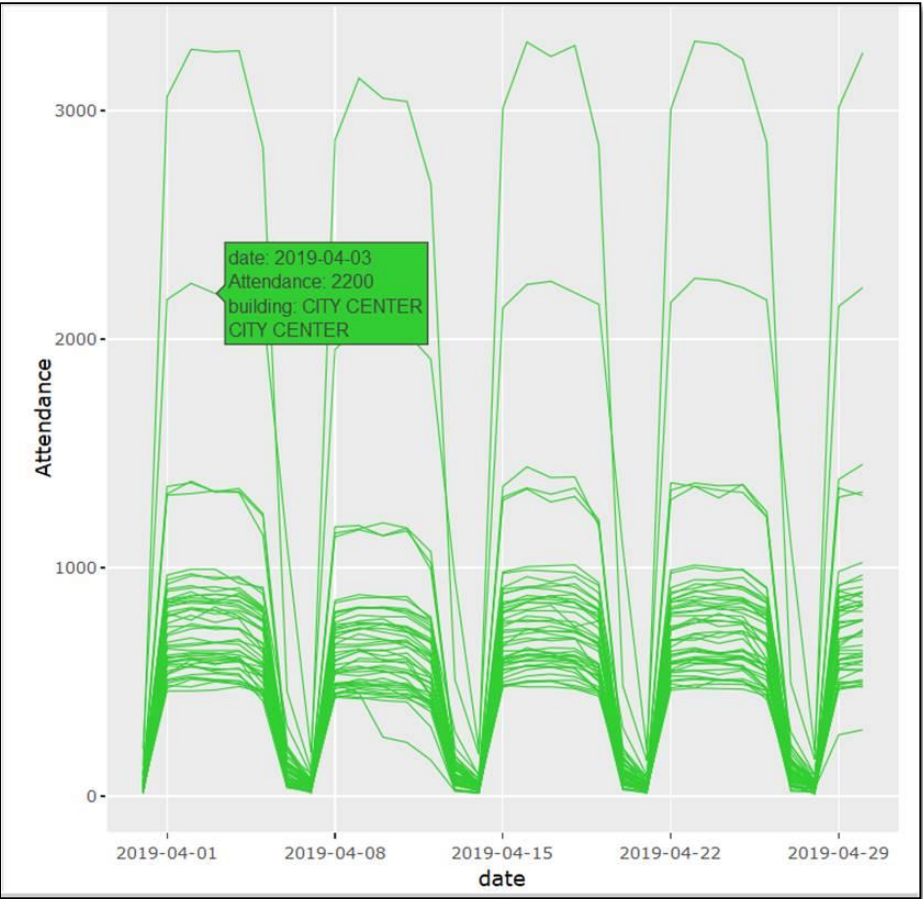
Facilities Services



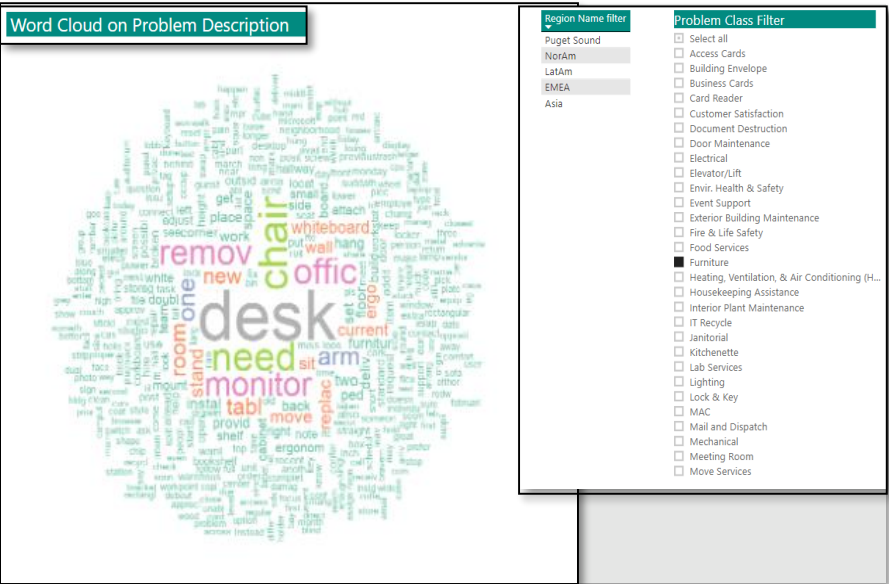
Services heat map

Weekly attendance pattern in Puget Sound building

Building attendance patterns



Service Title word clouds



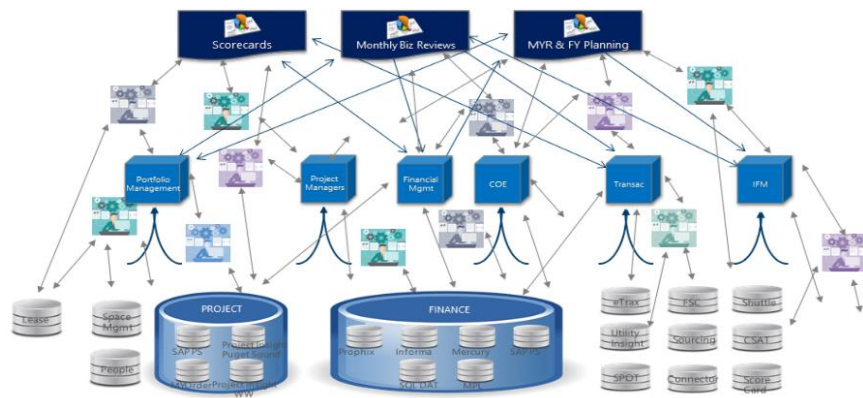
Progression of Data Warehouse

2 years ago

Current

Future

Fragmented, independent reports



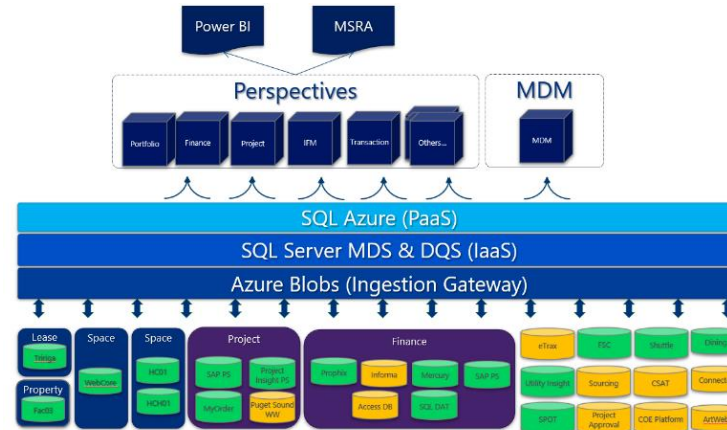
Disconnected data

Inconsistent data/hierarchies

Unreliable low-quality reporting

Manually intensive cycles

Unified, common data platform



Connected ecosystem

REF structured hierarchies

Continuous/monitored/quality

Automated pipeline flows

Refine and leverage data



Data lakes



DataMall → OneCatalog



Machine Learning

Data democratization

Advance analytics

Reactive to proactive

Data-backed decision making



Microsoft IT Showcase

How Microsoft does IT



Visit the website

microsoft.com/itshowcase

