

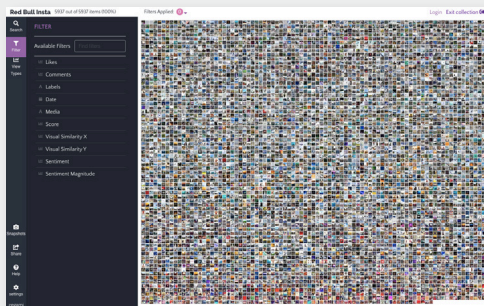


What is Zegami visual data exploration?

Unlike traditional data management systems, Zegami's visual data exploration gives you the power of ad hoc querying and visualization to allow you to understand what's in a dataset - including both structured and unstructured data. Zegami makes it simple to both assess the big picture and examine the fine detail of your data. Switch effortlessly between a variety of views and levels of detail, and easily filter to a specific subset, all within a single intuitive browser-based application.

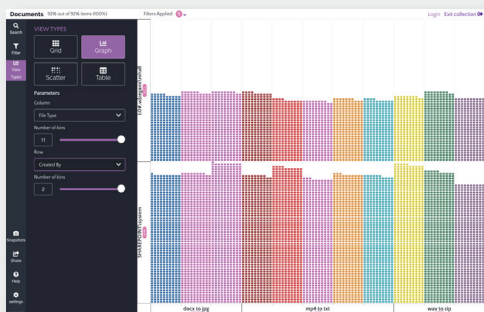
Flexible View System

See the shape of a data set by arranging items within a collection into different views. Zegami's flexible view system makes it possible to easily see outliers in the data, that would previously have been extremely difficult and time consuming to identify.



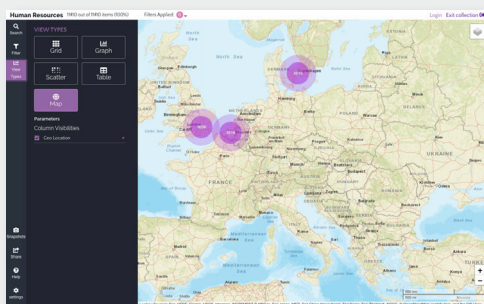
Grid View

The default Zegami view. See your entire data set presented in a simple grid. Easily spot patterns in large amounts of visual imagery, then seamlessly zoom in to individual items to reveal the full detail of each.



Graph View

Group items into a dynamic histogram view. Graph view provides flexible controls to arrange your data, revealing trends and unlocking valuable insights. Quickly drill down into areas of interest with just a few clicks.

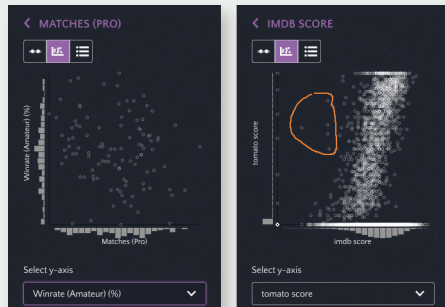


Map View

Map view makes it possible to see spatial relationships and patterns that may not have been immediately obvious in tabular or list data. Combined with the spatial filter, users can lasso around an area to focus on specific regions of interest.

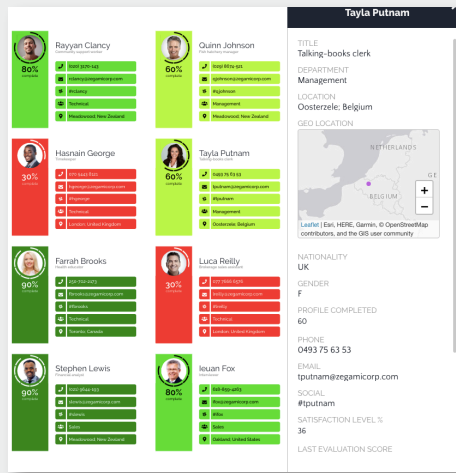
Search and Filtering

Keyword search, text category selection, numeric range, date and location – Zegami's rich filtering system adapts to the available data types in the collection. The filter panel is a fast way to reduce the items down to aid discovery and find exactly what you need.



Filtering

Numeric and Date types can be filtered using either a range, discrete values or a scatter plot, which can compare two dimensions in a dynamic plot. Users can then lasso around the points to view only those particular items. The scatter plot is especially powerful at spotting clusters of related items or outliers and is a unique feature of Zegami.



Metadata View

Select any data tile to see its metadata. The metadata panel presents all the associated values for that item, which can be customized to show a specific name or label for each item, as well as a description. URL values become links that will open in an external window. Spatial types are displayed on a zoom-able map for quick identification.



Dynamic Tiles

Zegami doesn't just work with images. Our flexible and dynamic tile system (also known as Zegs) makes it possible to create data-bound images to represent your data in live mini-dashboards. This has the added benefit of utilizing Zegami's proactive, ad hoc exploration interface on any kind of data set.

Additional features:



Snapshots

Create a saved state of the current filters and view. Useful for frequently viewed data and for sharing insights.



Bulk selection and tagging

Flexible tagging system to add additional metadata and create custom groups of items.



Theming & custom branding

Customize the interface to better integrate with existing systems.



Get started. Get your **FREE** demo now