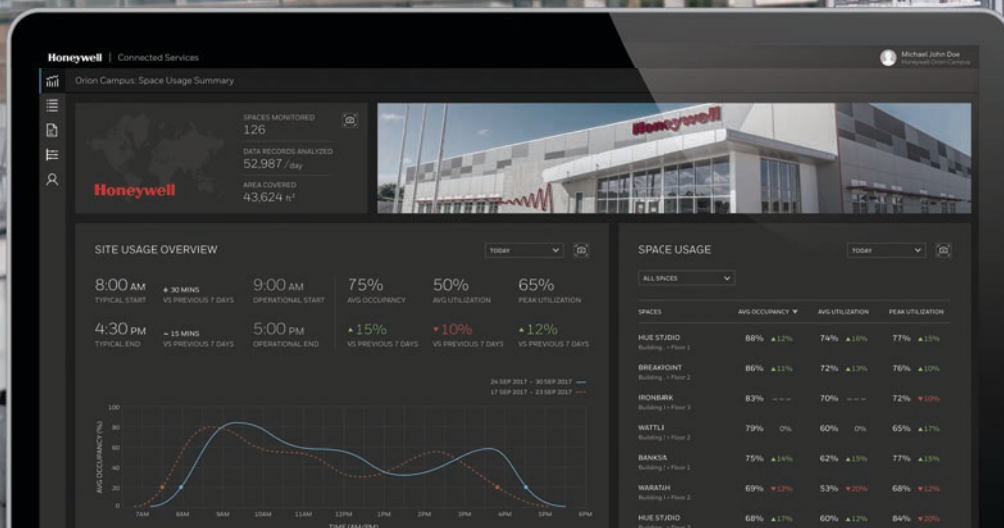


Make Every Square Foot Count

Honeywell Vector Space Sense



Smarter, Data-Driven Buildings

Most offices worldwide are now underused by as much as half of their capacity – a result of a shift in work styles, mobile technologies and business needs. Empty office space is a costly expense for organizations, with large companies potentially overpaying millions of dollars each year for the space they do not use. However, many organizations lack the necessary, holistic insights to take action to address these issues.

Honeywell Vector Space Sense harnesses the connectivity of the Internet of Things (IoT) to show where, when, and how building spaces are used at any given time, connecting organizations to actionable insights for better-informed space decisions that can improve occupant experiences and the bottom line.

Connect to Better Outcomes

Honeywell Vector Space Sense is an end-to-end, data-driven solution that enables superior space utilization, taking commercial real estate personnel from space awareness to meaningful action. The platform, designed to be sensor-agnostic, pulls data gathered by installed occupancy sensors to deliver actionable insights that help personnel better utilize, optimize and prioritize building space.

Honeywell Vector Space Sense delivers detailed, actionable insights into a building's overall space usage through three key steps:



Awareness – IoT-connected sensors provide data on space usage for any given building, floor, room or desk. The sensors can integrate with smart lights and Bluetooth beacons as part of a digital ceiling infrastructure.



Analysis – Thousands of data records collected from the range of IoT sensors in place are then analyzed using customized algorithms based on sophisticated space utilization models.

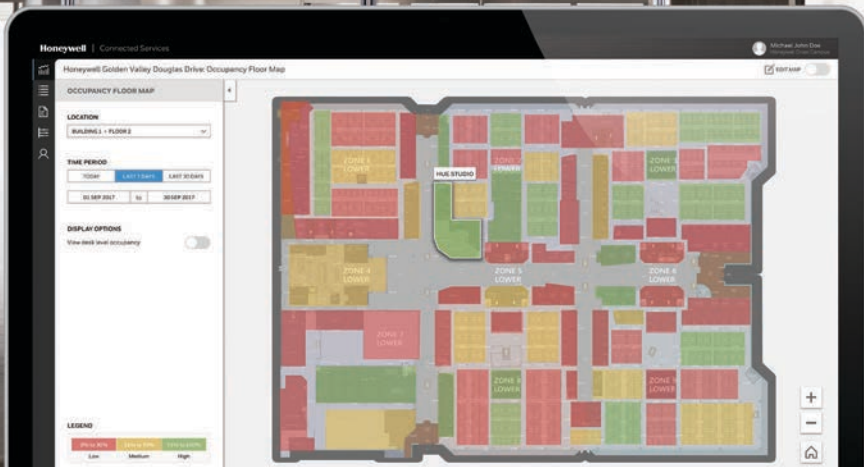


Action – Meaningful and actionable insights are presented in sophisticated yet intuitive dashboards and reports, including maps, usage profiles, trends, and other metrics. These show where and how space is used, and where opportunities exist to optimize both operational costs and the real-estate footprint.

Take Control

With Honeywell Vector Space Sense, corporate real estate personnel and building managers can:

- Repurpose underused spaces for more productive uses.
- Free up overused spaces to improve occupant experiences.
- Adjust building management system (BMS) schedules based on actual building occupancy, instead of fixed timings, to help improve overall efficiency and cost savings.
- Prioritize housekeeping and maintenance for spaces with higher use.
- Determine if available space can accommodate an imminent headcount increase, or whether more space is needed.
- Plan future space investments or divestments based on actual occupancy and usage trends observed over a specific period of time.



Enable Bottom-Line Benefits



- Building owners and operators can **reduce or repurpose underused space, which is estimated to cost companies with 5,000 or more employees millions of dollars each year.**



- Corporate real estate personnel can **achieve significant savings** by comparing actual space usage with broader portfolio plans and estimating space change needs with greater precision.



- Facility Managers can **make more informed decisions** to ease congestion by spotting flow problems, optimizing occupancy-based energy and operational costs, and negotiating space decisions more efficiently.



- Leveraging IoT-connected sensors and other occupant engagement tools like the Honeywell Vector Occupant App, employers can **enhance occupant comfort, engagement, and productivity** by better aligning spaces with occupant usage patterns and by connecting occupants to core building services.



Honeywell Connected Services

Honeywell Connected Services is an expanding portfolio of integrated technologies that leverage the connectivity of buildings to improve how facilities operate and the experiences they offer for those who visit and work within them. The Honeywell Connected Services portfolio — which draws from the collective power of IoT technologies, cloud applications and the deep domain expertise of Honeywell's engineers — also includes the Honeywell Vector Occupant app, which combines the convenience of today's mobile devices with connected building features to give occupants more control over their experiences within a building. The portfolio also includes Honeywell Pulse™ for Connected Buildings, an app that connects facility and engineering staff with building systems to promote productivity and system performance, as well as Honeywell Outcome Based Service, a smart suite of services that use real-time data and analytics to help focus systems for optimal facility performance.

Honeywell Vector Space Sense helps organizations get more out of their buildings by providing access to actionable insights for more informed decision-making.

Talk to us about how we can transform the way you manage your building.

For more information

<https://buildingsolutions.honeywell.com/ConnectedServices>

Honeywell Building Solutions

1985 Douglas Drive North
Golden Valley, MN 55422-3992
Tel: 1-800-345-6770
www.honeywell.com

SL-53-2569 | 06/18
© 2018 Honeywell International Inc.

Honeywell