

# Windows 10 Client: New Features and Upgrade

## WorkshopPLUS

**Duration:** 3 days | **Focus Area:** Upgrade, Migration and Deployment | **Difficulty:** 200

The Windows 10 Client: New Features and Upgrade workshop provides students with a comprehensive introduction to the wide range of new and improved features in Windows 10.

Gain a broad understanding on enterprise mobility, deployment, security and user experience.

### Key Features and Benefits

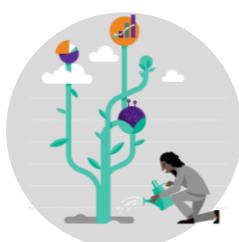
- Built-in Applications and UI
- Enterprise Management and Mobility with Windows 10
- Windows 10 Client Security
- Windows 10 Servicing Model
- Deployment Scenarios and Features

### ♦ OUTCOMES ♦



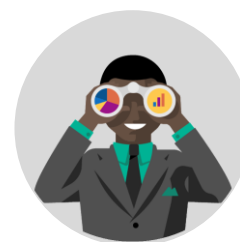
#### Skills

Gain a deeper understanding of the Windows release, focusing on functionalities.



#### Best Practices

Ensure readiness of the client management and deployment teams to release and maintain Windows.



#### Way Forward

Translate the learnings into your day to day business to adopt and react on the changes effectively.

### ♦ PREREQUISITES ♦

Participants that have existing experience performing Windows Client deployment, configuration and planning will receive the most value from this course.



#### Recommended Qualifications

- Good Windows 10 skills in the day to day business.



#### Hardware Requirements

- An Intel Core-i5-based PC
- 4 GB RAM
- 128 GB HDD
- Windows 7 SP1 or later
- Office 2013 Professional Plus
- Internet access with at least 1 Mbps bandwidth per student

## Duration: 3 days

**START**

Day 1

Day 2

Day 3

**End**

- *Introduction to Windows 10*
- *User Interface*
- *Universal Windows Apps and Windows Store*

- *Modern management*

- *Windows Security*
- *Windows Deployment*

◆ SYLLABUS ◆

### Introduction to Windows 10

- Getting started with Windows 10

### User Interface

- Windows Logon Experience
- User Interface in Windows 10
- User Interface Customizations and Improvements
- Windows Subsystem for Linux

### Universal Windows Apps and Windows Store

- Universal Windows Apps
- Introduction to Microsoft Store
- Microsoft Store for Business
- Microsoft Edge

### Modern Management

- Introduction to Azure Active Directory (AAD)
- Windows 10 & Azure Active Directory
- Introduction to OneDrive for Business
- Bring your own Device
- Mobile Device Management Overview
- Modern IT Management Overview
- Windows Information Protection

### Windows Security

- Today's Security Challenges
- Windows Hello for Business
- Windows Defender System Guard (WDSG)
- Windows Defender Application Control (WDAC)
- Windows Defender Application Guard (WDAG)
- Windows Defender Advanced Threat Protection (WDATP)

### Windows Deployment

- Windows Improved Deployment Experience
- Infrastructure Deployment Requirements
- What is Provisioning?
- What is new in Group Policy
- Windows as a Service
- Windows Analytics

**NEXT STEPS:** If you are interested in this WorkshopPLUS for your organization, contact your Microsoft Account Representative.