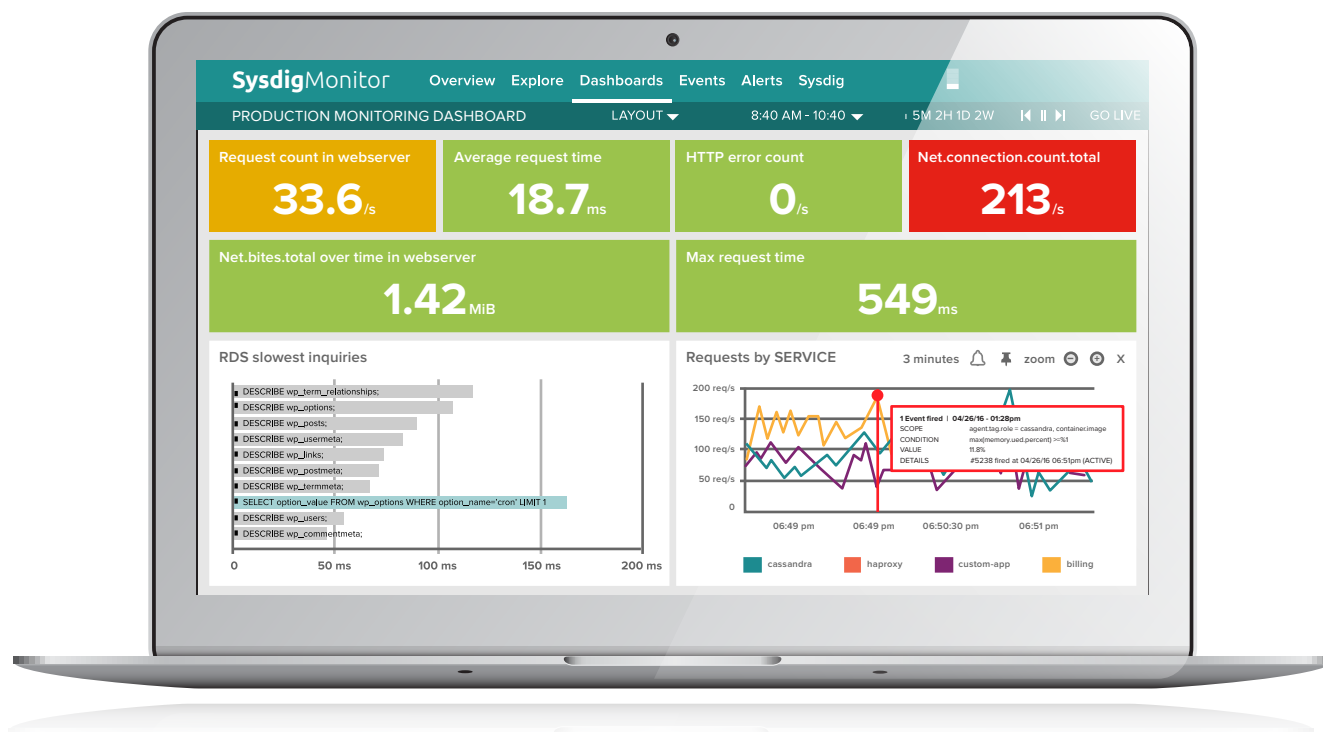


# SysdigMonitor

Container monitoring, alerting + troubleshooting



## APPLICATION INTELLIGENT MONITORING

Get app-centric custom views for smarter monitoring – all from a single instrumentation point.



## MICROSERVICE PERFORMANCE MANAGEMENT

Auto-discover containers and services for complete visibility across your entire stack any scale.



## ADAPTIVE ALERTING

Build fine-grained alerts for proactive notification of events, anomalies and downtime.



## TRACE-DRIVEN TROUBLESHOOTING

Solve problems faster by seeing the what and the why, even after your containers and hosts are gone.

# What does Sysdig Monitor do?

## **SIMPLIFY DISCOVERY AND METRIC COLLECTION.**

Transparent instrumentation dynamically discovers your applications, containers, hosts, and networks and lets you see inside containers from the outside with a single agent per host.

## **MONITOR SERVICES AND APPLICATIONS.**

Deep integrations with Kubernetes, Docker, Mesos, AWS, Azure and more lets you see beyond infrastructure into how your apps and services are performing.

## **BUILD ROBUST DASHBOARDS.**

Customizable dashboards enable at-a-glance views of your infrastructure, applications, and metrics and lets you visualize your environment the way you want.

## **EXPLORE YOUR ENTIRE INFRASTRUCTURE.**

Automatic correlation of data from across your infrastructure including custom metrics, from statsD, JMX, and Prometheus provides deep insight into complex environments.

## **PROACTIVELY ALERT FOR FASTER RESPONSE.**

Configurable alerts enable proactive notification of any condition including events, downtime and anomalies to help you get a handle on issues before they impact operations.

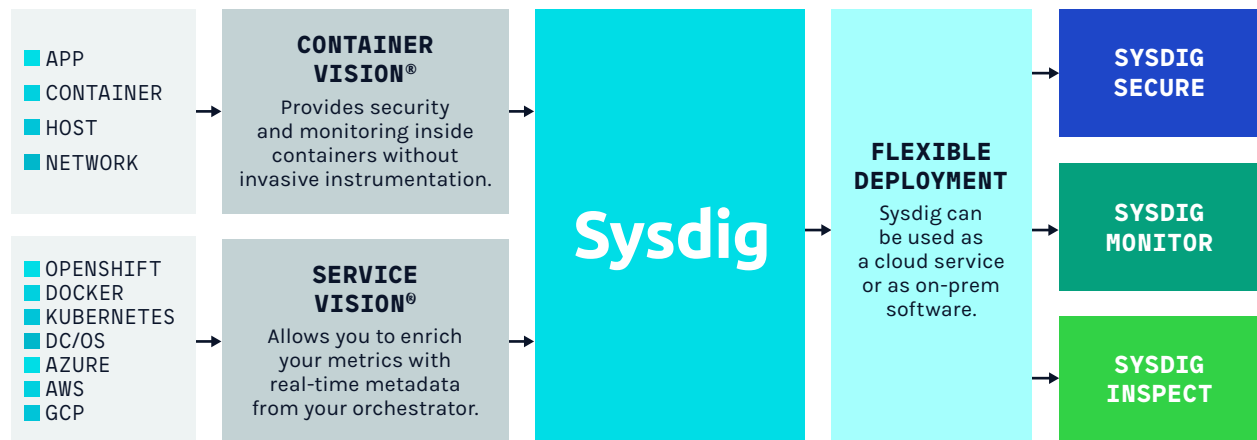
## **ACCELERATE TROUBLESHOOTING.**

Deep container visibility, service-oriented views, and comprehensive metrics help you hunt threats and eliminate issues faster.

—

Sysdig is the container intelligence company.

We have created the only unified platform to deliver monitoring, security, and troubleshooting in a microservices-friendly architecture.



**SYSTEM REQUIREMENTS.** [sysdig.com/system-requirements](https://sysdig.com/system-requirements)

**ON-PREM SIZING GUIDE.** [sysdig.com/on-premise-install](https://sysdig.com/on-premise-install)

**SEE US IN ACTION.** [sysdig.com/webinars](https://sysdig.com/webinars)

**JOIN THE COMMUNITY.** [slack.sysdig.com](https://slack.sysdig.com)