

What's driving demand for population health and clinical transformation?

Today, more than 40 of the 76 million baby boomers are retired. 10,000 are retiring every day from now through at least 2030.

(Harvard Business Review)

Current estimates suggest that the US will face a shortage of 46,100 to 90,400 physicians by 2025.

(Forbes Magazine)

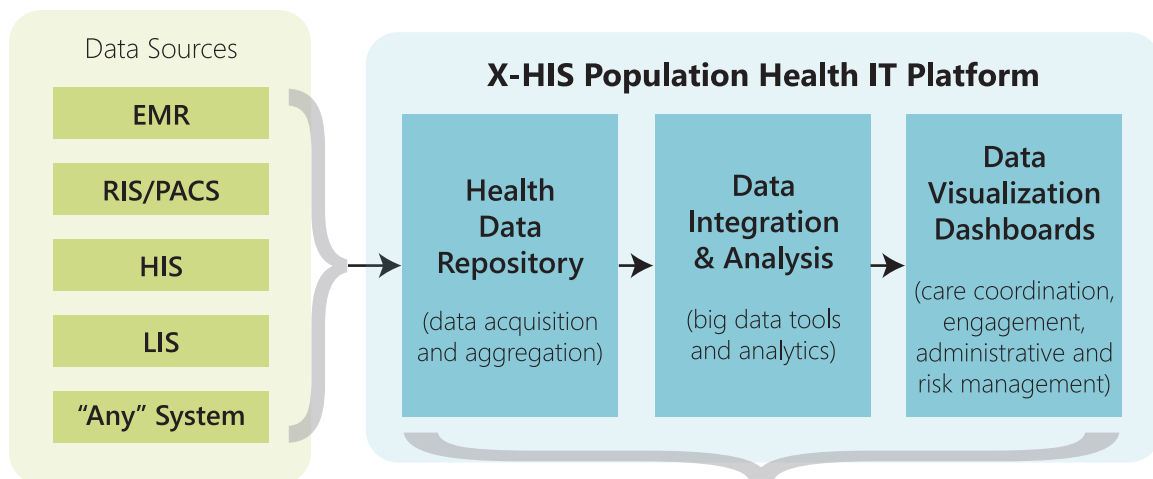
According to the CDC, "Chronic diseases and conditions—such as heart disease, stroke, cancer, type 2 diabetes, obesity, and arthritis—are among the most common, costly, and preventable of all health problems."

X-HIS® Population Health Management

end-to-end patient-centric solutions for enabling clinical, administrative and operational transformation to value-based care

7 Medical delivers healthcare organizations the X-HIS Health IT Platform, an integrated, end-to-end services framework for population health management that enables clinical and administrative transformation to value-based care models.

X-HIS is a robust, flexible solution comprising big data management, advanced integration and analytics, and real-time data visualization. We manage your population health IT, data and integration, so you can focus on improving patient care and community engagement.



Data solutions that enable population health management, outcomes and quality.

Quadruple Aims

Patient Engagement

Improving patient care and engagement.

Provider Engagement

Improving provider engagement across the continuum of care.



Population Health

Improving population health with value-based care.

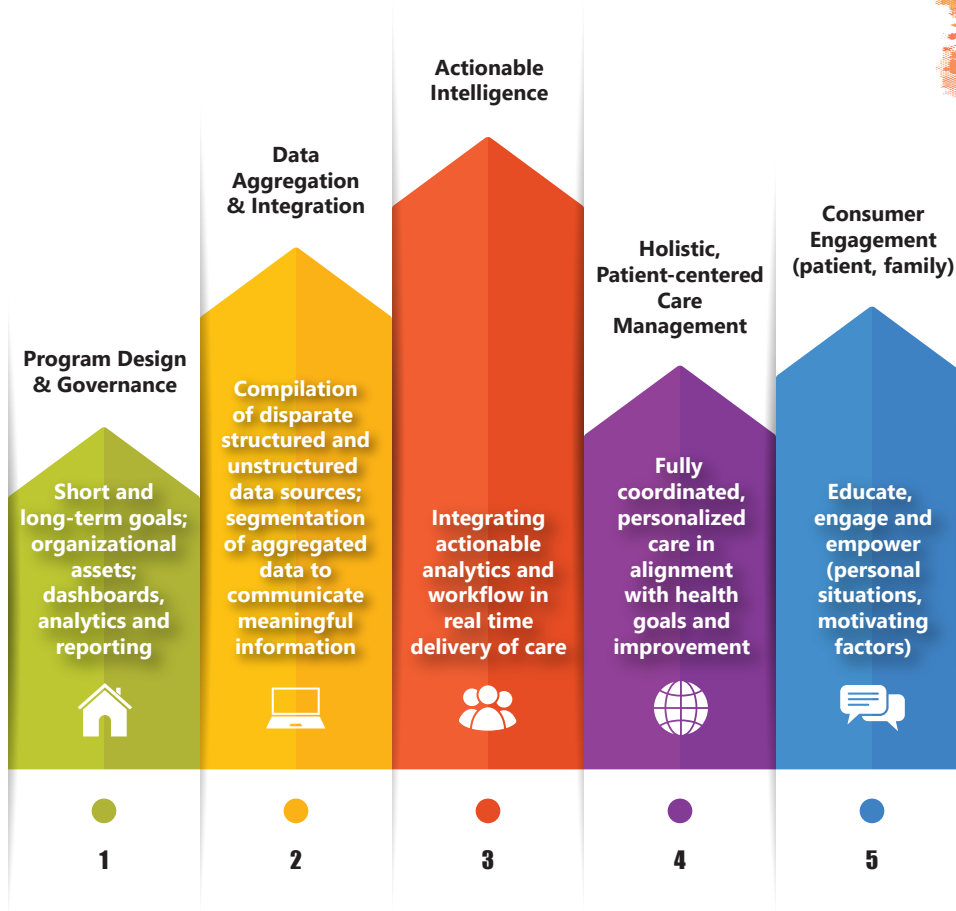
Cost Reduction

Reducing total cost of care while improving quality.

7 Medical Advantages

- Delivered through private and public cloud, on-premise, and fully managed
- One of the first cloud service providers in healthcare—since 2005
- 10+ years of interoperability experience working with all major vendors (EMR, RIS, HIS, LIS)
- Extensive workflow automation expertise working across financial, operational and clinical areas
- Quality Certified/Audited: Meaningful Use; SSAE 16 SOC1 Type 2; HIPAA; FDA 21 CFR Part 11
- Dedicated 24x7 clinical and technical support

Five Pillars of Population Health



Get started today:

800.440.7119, option 3
info@7medical.com

WWW.7MEDICAL.COM