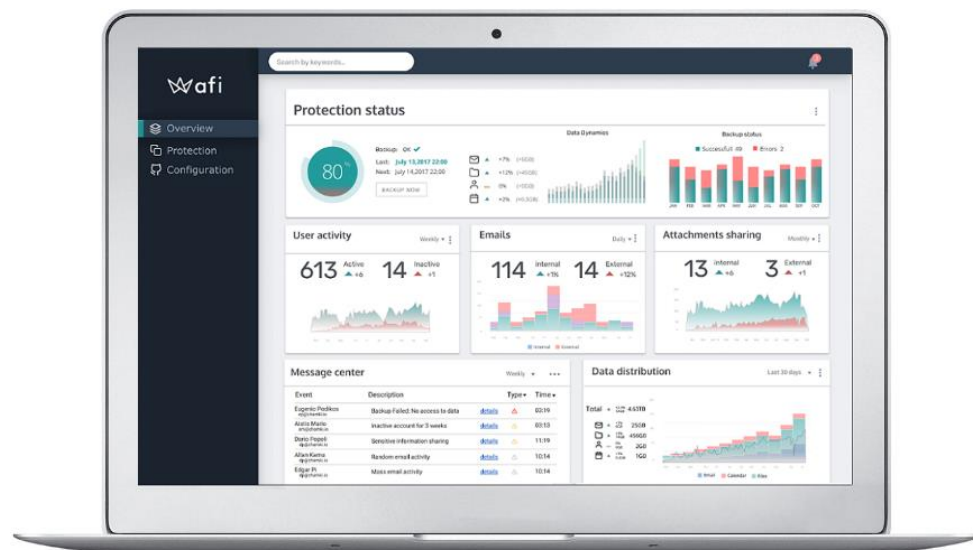


# Next Gen G Suite/O365 Backup



## Reliability & Resiliency

AI engine handles MS & G Suite API errors to **prevent backup failures**.

**Immutable** backup format insulated from admin errors & cyber attacks.

## Simplicity & Intelligence

**Easy UI** with instant preview, full-text search & 10+ unique features.

**SLA-based** backup policies which wipe out management complexity.

## Next Gen Architecture

**2-3x faster** performance than competition, scalable to 1,000s of users.

**Strong roadmap:** new features & major updates released quarterly.

## SUPPORTED APPLICATIONS

### G Suite

- Gmail
- Drive
- Shared Drive
- Calendars
- Hangouts
- Contacts
- Sites

### Office 365

- Exchange
- OneDrive
- SharePoint
- Calendars
- Contacts
- Teams

Full fidelity backup of cloud apps (*unique* vs older competitors):

- Drive sharing permissions backup *not just files*
- Document IDs, file metadata incl. dates & author
- *Full* structure of email (labels) folders & threads

## BACKUP

- Automated daily to up to hourly (high-frequency) backups
- SLA-based backup, automated re-scheduling to avoid failures
- On-demand backups can be triggered by Admin for *all* or users
- Unlimited retention, storage locations in Europe and USA, or connected *customer owned* S3-compatible cloud storage

## SEARCH & RECOVERY

- Only backup with *full text search* allowing search by data contents, not limited by the standard metadata search fields
- Granular Item-level or whole user *instant* account restore
- Point in time restore and versioning with *unlimited* number of recovery points or recovery time-time
- *Instant* online preview and export in native file formats

## ADMINISTRATION

- Actionable backup reporting in web dashboard or email; clear status/error messages that keep Admin informed
- Automated archiving of deleted G Suite/O365 users - save on licensing costs (Afi archived users are *free* & retained forever)
- Manage multiple G Suite/O365 domains in single Afi account
- Granular admin/support/backup operator roles (incl. restore-only roles with no ability to see the contents of emails/files);
- Configurable end-user self-service recovery portal

## SECURITY

- AI-based anti-ransomware engine performing pre-emptive backups and issuing warnings in case of attack
- Immutable and encrypted cloud backup format protected from unauthorized data deletions, modifications or access attempts
- Detailed audit log with access/configuration/operations details

...and more features release *every quarter*.