



User Manual  
Release Pro  
Version 1.0.0.0

Rev.01 del 20052019

# User Manual

Release Pro

Version 1.0.0.0

Prepared by  
Alterna

ALTERNA S.r.l.

Via Isonzo 61, 40033 Casalecchio di Reno (BO)  
T +39 051 590709 F +39 051 592057 [www.alternanet.it](http://www.alternanet.it)



## SUMMARY

1	PREMISE.....	3
2	INSTALL RELEASE PRO SETUP .....	4
2.1	Assisted Setup .....	4
3	CONTROL TABLE SETUP – MASTER DATA CONTROL .....	6
3.1	Master data Control.....	6
3.2	Setup a basic control.....	6
3.3	Setup a control with specific filters .....	8
3.4	Setup a control with relation to another table .....	8
3.5	Master data release and block reason code.....	10
4	CONTROL TABLE SETUP – DOCUMENT CONTROL .....	12
4.1	Document Control.....	12
5	CONTROL TABLE SETUP – GENERAL AND ITEM JOURNALS CONTROL .....	13
5.1	General and Item Journals control .....	13

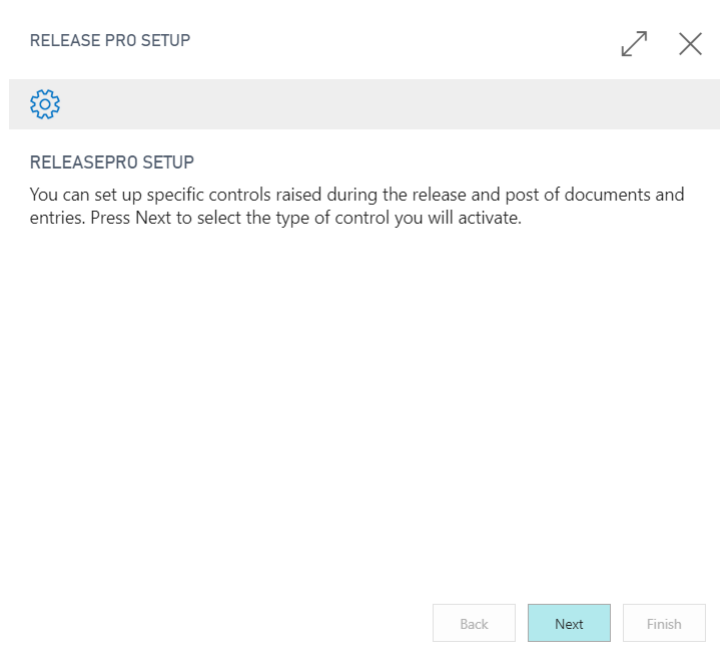
## 1 PREMISE

This document is a user guide for Release Pro App.

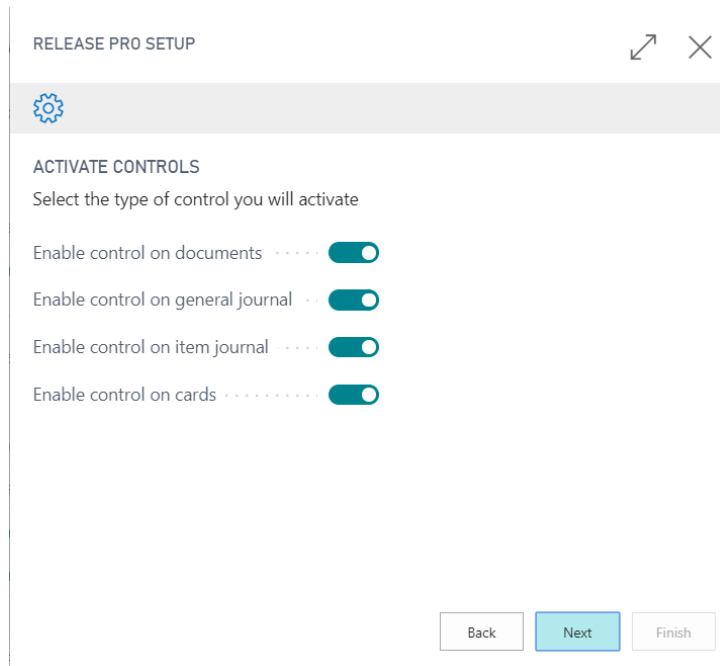
## 2 INSTALL RELEASE PRO SETUP

### 2.1 Assisted Setup

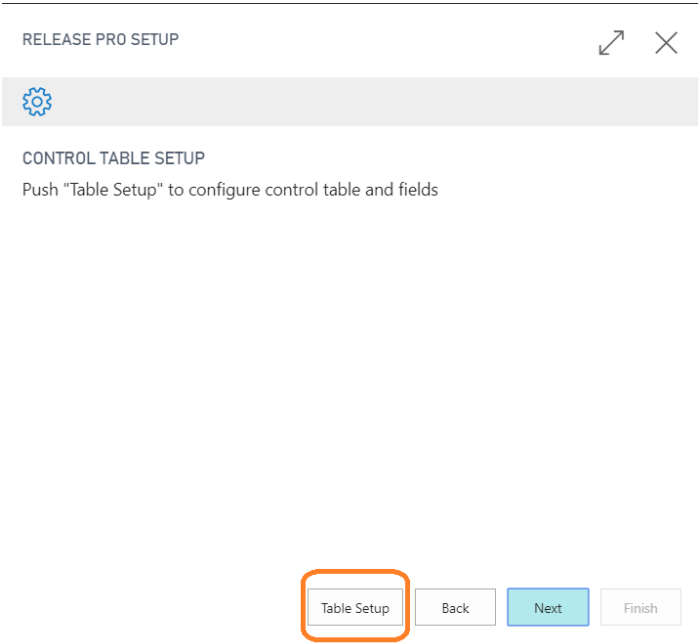
To set controls on the tables, is necessary to enable the ReleasePro extension. Open the Assisted Setup and choose the Release Setup item. The system will open the assisted guide to install the extension.



Select the flags for the control to activate.



Click Next.



It is possible to define immediately or later the "Table Setup".

### 3 CONTROL TABLE SETUP – MASTER DATA CONTROL

#### 3.1 Master data Control

To create a control, select "new" from the page *Control Table Setup*.

For example, to create a control on the customer card release it is necessary:

- In the *Table ID* field, select the table where apply the control (in this case 18 that is the customer table);
- The *Table Name* field will be automatically filled in;

CONTROL TABLE SETUP | WORK DATE: 01/04/2019

✓ SAVED

Search	+ New	Edit List	Delete	Show Fields	Open in Excel	Actions	...	Filter	Menu
TABLE ID	TABLE NAME	DOCUMENT TYPE POS.	DOCUMENT TYPE DESCR.	FIELDS	EN... CO...				
18	Customer	11	All Documents	1					

- In the *Document Type Pos.* and *Document Type Descr.* Select for which type of document apply the control. These fields are necessary only for table related to documents. For master data are automatically filled in with *all documents*.

#### 3.2 Setup a basic control

To set the conditions of the control click on *Show Fields*.  
In the new window it is possible to set the conditions.

CONTROL TABLE SETUP | WORK DATE: 01/04/2019

✓ SAVED

Search	+ New	Edit List	Delete	Show Fields	Open in Excel	Actions	...	Filter	Menu
TABLE ID	TABLE NAME	DOCUMENT TYPE POS.	DOCUMENT TYPE DESCR.	FIELDS	EN... CO...				
18	Customer	11	All Documents	1					

TABLEDATA - 18 | WORK DATE: 01/04/2019

✓ SAVED

### Control Table Detail

Search	+ New	Edit List	Delete	Open in Excel	Filter	Menu
FIELD ID	FIELD CAPTION	FIELD VALUE	CONTROL TYPE	CONDITION FILTER		
0			Error			

- In *Field Id* insert the field no. to which apply the control (for example the address);
- The *Field Description* is automatically filled in;
- In *Field Value* fill in the condition that must be verified. Use the filter symbol to set the condition (in the example has been set <>', it means not empty);

- In *Control Type* you can select 3 different options:
  - a) **error**: the system shows an error message and does not release the card;
  - b) **warning**: the system shows a warning message, it is possible to click OK and the card will be released;
  - c) **notification**: the system shows a notification message at the top of the screen.

TABLEDATA - 18 | WORK DATE: 01/04/2019



## Control Table Detail

Search + New Edit List Delete Open in Excel				
FIELD ID	FIELD CAPTION	FIELD VALUE	CONTROL TYPE	CONDITION FILTER
5	Address	<>"	Error	

This is a basic control.

To activate it, go back to the initial page and check *Enable Controls* flag.

The column *Fields* shows the number of controls set up.

It is possible to enable different controls on different fields at the same time.

CONTROL TABLE SETUP | WORK DATE: 01/04/2019

✓ SAVED



Search + New Edit List Delete Show Fields Open in Excel Actions Fewer options					
TABLE ID	TABLE NAME	DOCUMENT TYPE POS.	DOCUMENT TYPE DESCR.	FIELDS	ENAB... CONT...
18	Customer	11	All Documents	1	<input checked="" type="checkbox"/>

In the example the system checks that the address is not empty when a customer card is released and shows an error.

...TOMER CARD | WORK DATE: 01/04/2019

10000 · Adatum Corporation

Process New Document Request Approval Navigate Customer Actions Navigate Report ...

Individual Person ☐ Place of Birth

Resident  Fiscal Code

First Name

Last Name

Date of Birth

Address & Contact

ADDRESS CONTACT

Address Contact Code

Address 2 Contact Name Andrea Ricci

City Phone No.

! The field Address must be <>".

OK

Show less

### 3.3 Setup a control with specific filters

Many specific conditions can be set for the controls. For example, opening again the control on customer card, it is possible to set the control to check that the address must be not empty when the country is IT.

To setup this control, open Control table Detail and in *Condition Filter* field select the button with the 3 dots.

TABLEDATA - 18 | WORK DATE: 01/04/2019

✓ SAVED



## Control Table Detail

FIELD ID	FIELD CAPTION	FIELD VALUE	CONTROL TYPE	CONDITION FILTER
5	Address	<>"	Error	<input type="text" value="..."/>

In the new window is possible to set the filter:

- In *Field Number* select the field to which apply the filter (in this case Country/Region Code);
- In *Field Filter* enter the filter's value. (In this case the control must be active only for customer with country code IT). Note that it is possible to link multiple filters and use all the classic values (such as ", <>, etc. ...) .

TABLE FILTERS - + New



FIELD NUMBER	FIELD CAPTION	FIELD FILTER
35	Country/Region Code	IT

OK

Cancel

To complete the setup click OK. In this way a control has been set with a specific filter.

In this example the system shows an error on the customer card release when the country is IT and the address is empty.

### 3.4 Setup a control with relation to another table

It is also possible to set a conditional control for a field in another table.

In this example, the unit price of sales order lines must be <> 0 when the country code of the customer is IT.

Create a basic control as explained in point 3.2 for the unit price on sales line.



## Control Table Detail

FIELD ID	FIELD CAPTION	FIELD VALUE	CONTROL TYPE
22	Unit Price	<>0	Error

To set the table to which the control is related, select the *Related Tables Conditions* button.

← TABLEDATA - 18 | WORK DATE: 01/04/2019 ✓ SAVED ↗

## Control Table Detail

Search	+ New	Edit List	Delete	Related Tables Conditions	Open in Excel	More options
--------	-------	-----------	--------	---------------------------	---------------	--------------

A new window is open:

- in *Condition Table ID* Field, select the related table (in this case customer table);
- In *Condition Filter* field set the filter's field, the procedure is the same as that explained in step 3.3. In this example the condition filter is country = IT.

RELATED CONTROL TABLES | WORK DATE: 01/04/2019 ✓ SAVED ↗

Search	+ New	Edit List	Delete	Table Relation	Open in Excel	More options
CONDITION TABLE ID	CONDITION TABLE NAME	CONDITION FILTER	HAS TABLE RELATIO...			
18	Customer	VERSION(1) SORTING(Field1) WHERE(Fiel ...	No			

To complete the setup is necessary to link the 2 tables (customer and sales lines). Select *Table Relation* button.

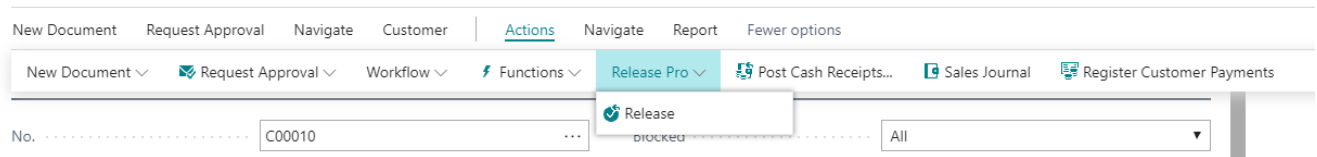
RELATED CONTROL TABLES | WORK DATE: 01/04/2019 ✓ SAVED ↗

Search	+ New	Edit List	Delete	Table Relation	Open in Excel	More options
CONDITION TABLE ID	CONDITION TABLE NAME	CONDITION FILTER	HAS TABLE RELATIO...			
18	Customer	VERSION(1) SORTING(Field1) WHERE(Fiel ...	No			

In the new window there are 2 columns for the 2 tables (customer and sales line).

It is necessary to link the 2 tables with the field they have in common.  
In the example, for the customer the field is No. and for sales line Sell-to customer No.





The system performs the controls set in control table setup.

Without errors:

- The status is released;
- The Blocked field is empty;
- The card is not editable.

With errors the card remains open and blocked.

It is possible to select a block reason.

In this way the card is blocked also after performing the release.

4 CONTROL TABLE SETUP – DOCUMENT CONTROL

4.1 Document Control

Open the control table setup page and select a table for sales or purchase documents (such as table 36 - sales headers).

Complete the line in the same way of the previous chapter.

For documents it is possible to choose the *Document Type Pos.*

TABLE ID ▼	TABLE NAME	DOCUMENT TYPE POS.	DOCUMENT TYPE DESCR.
36 ...	Sales Header	11	All Documents

Search Open in Excel

NAME/VALUE LOOKUP

NAME	VALUE
Quote	0
Order	1
Invoice	2
Credit Memo	3
Blanket Order	4
Return Order	5
All Documents	11

OK

Cancel

It is possible to select different controls for different types of documents: quotes, orders, etc.

The control is performed when the document is released.

All the other functionalities described in the previous chapter are available also for documents.

## 5 CONTROL TABLE SETUP – GENERAL AND ITEM JOURNALS CONTROL

### 5.1 General and Item Journals control

The ReleasePro setup enables the controls also for Item and General Journals.  
Complete the setup in the same way of the previous chapter.  
The related tables are 81 general journal and 83 item journal.

The control is performed when the document is posted.

←
ITEM JOURNALS | WORK DATE: 01/04/2019
✓ SAVED
↗

Batch Name .....

Manage
Process
[Post/Print](#)
Line
Item
Actions
Navigate
Fewer options

Post
 Post and Print
 Print...

POSTING DATE
ENTRY TYPE
DOCUME... NO.
ITEM NO.
DESCRIPTION
LOCATION CODE
QUANTITY
UNIT OF MEASURE CODE

01/04/2019
:
Positive Adjrn

POSTING DATE	ENTRY TYPE	DOCUME... NO.	ITEM NO.	DESCRIPTION	LOCATION CODE	QUANTITY	UNIT OF MEASURE CODE
01/04/2019	:	Positive Adjrn				0	PZ

All the other functionalities described in the previous chapters are available also for journals.