

# CLINIC MANAGEMENT SOFTWARE

## Overview

### Relationship Management

- Patients, Contractors (partners, insurance companies, legal services, state institutions, supervisory and audit authorities, regulators)

### Organizational structure management (talent management)

- Clinics, departments, units,
- Collaboration management

### Asset Management

Equipment, premises, buildings, components, consumables, medical supplies

### Case Management

From customers, partners and staff

### Operating and financial reporting

Structure, content and forms of reports



## GCP

Good Clinical Practice



BeverCRM Ltd,

0065, str. R.Meliqyan, 2a/7, Yerevan, Armenia | [info@bevercrm.com](mailto:info@bevercrm.com) | [www.bevercrm.com](http://www.bevercrm.com) | phone: +3749 7759 0071

## Clinic Management Software (CMS)

The system provides complete management and support of the relationship between the clinic and the patient from the moment the patient first visits the clinic. The system includes the ability to store electronic medical records, on the basis of which electronic cards and the entire electronic directory of the clinic are generated.

## Patient E-Card

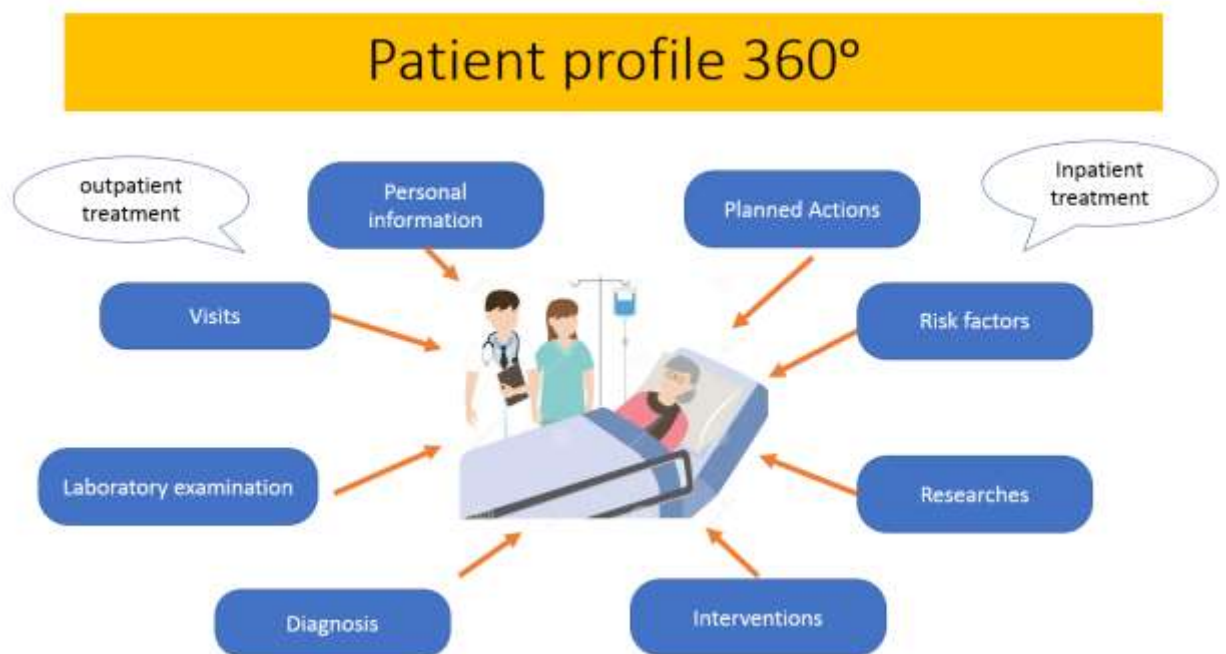
The electronic card system is designed to generate documents (Basic Card, Regular Exam Card, ECHO Research Data) and analytical reports for various patient groups.

The CMS system contains a medical information subsystem for the necessary reporting, the rapid creation of printed forms and in-depth data analysis, which greatly speeds up and facilitates the process of medical statistics. Electronic reports can be easily downloaded in Word, Excel, PDF and other formats.

The following sections are provided for entering and grouping patient data into the CMS program:

- Clinic visits
- Demographic Contact Information
- Diagnoses and associated diseases
- Survey process planning (subjective and instrumental, SG-ECO exam data ...). Map of the next examination of the patient and the relationship with the main card. Planning of actions: prescribing drugs, treatment plan, plan for follow-up visit and examination, assessment of risk factors, concomitant diseases, interventions, subjective examinations (complaints, instrumental examination), objective examination.

- Automatic generation of computed tomography data. Attaching files (results of laboratory analysis) to electronic patient records.
- Interventions (coronarography, stenting, balloon dilatation and surgery)
- Registration of patient medications;
- Data analysis. Quick search and segmentation of patients according to various search criteria.
- Risk Factors / Hereditary Disease Assessment



#### The system provides a single laboratory database:

- Creation of a database for clinical diagnostics, biochemical, blood bank and immunological laboratories.
- Attach laboratory data to the patient's main chart, access data from the relevant departments.

#### Processing data from laboratory analysis results.

- ✓ The system allows you to register test data of the results of laboratory medical equipment.
- ✓ For example, the results of the ECHO-SG exam:
- ✓ 1. M-Mode / 2D data

- ✓ 2. Contractile function of the heart (diastolic dysfunction, local anemia: foci, segmental hyperemia, assessment of heart synchronicity)
- ✓ 3. Tissue Doppler, strain LV / RV
- ✓ 4. Heart valves
- ✓ 5. Other features and general description
- ✓ 6. Electronic signature (cardiologist, attending physician)
- ✓ 7. Automatic test data generation ECO-SG

Also,

- ✓ Classification of data by the structure of the clinic, by example, express - Laboratory, immunology, serology, hematology, general analysis, biochemical laboratory
  - ✓ Structure of test data, analysis, types of studies, indicators (norm, fact) and properties;
  - ✓ Classification and grouping of analyzes
- formalization of the process (formulation);
- ✓ collection and preparation of analysis results;

**The system has developed means for assigning user access rights and data protection in the system.** Access to data is regulated according to the roles of the designated users. Electronic card information can be displayed on the screen in various ways depending on user access.

The BVR CMS Software provides summary opportunities for generating summary reports based on the existing database of patients and the clinic's interaction with them.

