



EDI Framework

BE-terna EDI framework quick guide

Table of contents

1	Introduction	2
2	Overview	2
2.1	Layout	3
2.1.1	Workspaces	3
2.1.2	Captures	4
2.1.3	Periodical	5
2.1.4	Settings	5
3	Process	7

1 Introduction

BE-terna's EDI solution is a technical **framework** that basically enables reading and writing of all EDI formats and files. It is available as a standalone BE-Plus module for Dynamics 365 Finance and Operations (Enterprise Edition).

Implemented basic processes in the Standard module:

- **Sales**
 - Import ORDER (order)
 - Import ORDCHG (order change)
 - Export ORDRSP (job confirmation)
 - Export INSDS (picking lists)
 - Export DESADV (delivery note)
 - Export INVOICE (invoice)
- **Purchasing**
 - Export ORDER (order)
 - Import ORDRSP (job confirmation)
 - Import DESADV (delivery note)
- **Warehouse**
 - Export INVRPT (stock)
 - Import INVRPT (stock)

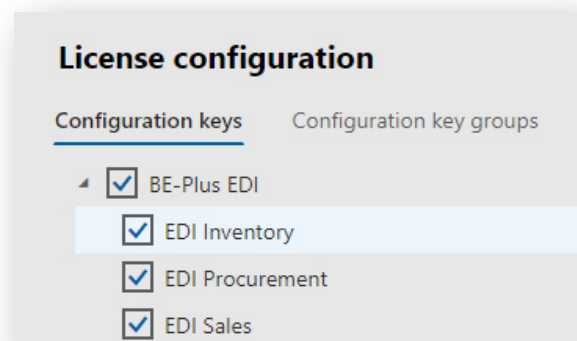
Other formats can be implemented with extreme ease by importing the required objects (categories, tables, forms). EDIFACT, XML and CSV file formats are supported.

The framework only provides the basis for carrying out b2b EDI. Project-specific settings and adjustments – such as setting up reports or the message layout in particular – are always necessary.

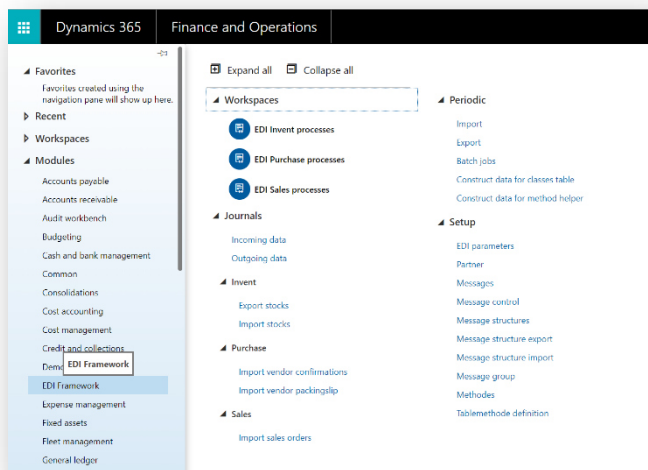
Also, no additional third-party tools such as MS BizTalk, AIF or DIXF are needed; the solutions needed are extensively provided by BE-terna.

2 Overview

The EDI Sales, EDI Purchasing and EDI Inventory sections can be activated individually. All sections form part of one BE-Plus EDI licence.



In addition to the three workspaces for warehouse, purchasing and sales processes, there



is a section for recording and editing incoming and outgoing EDI messages (data). The staging tables for imports and exports can also be called up and edited here, organised by sections. In addition to a range of periodisable applications, the main basic EDI parameters, message layouts, EDI partners and methods are defined in the

Settings section.

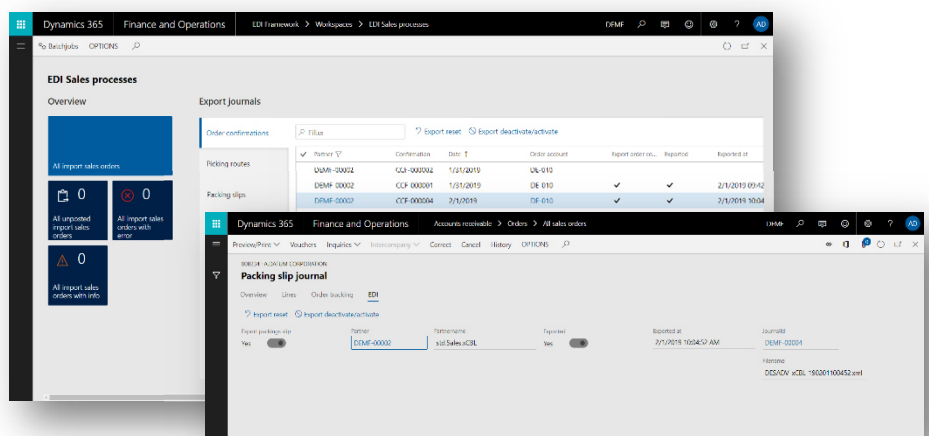
2.1 Layout

2.1.1 Workspaces

The BE-terna EDI framework comprises three workspaces (which can also be selected via the dashboard) for the main sections. Here, the user gets a quick overview of the status of the current EDI processes in the respective section.

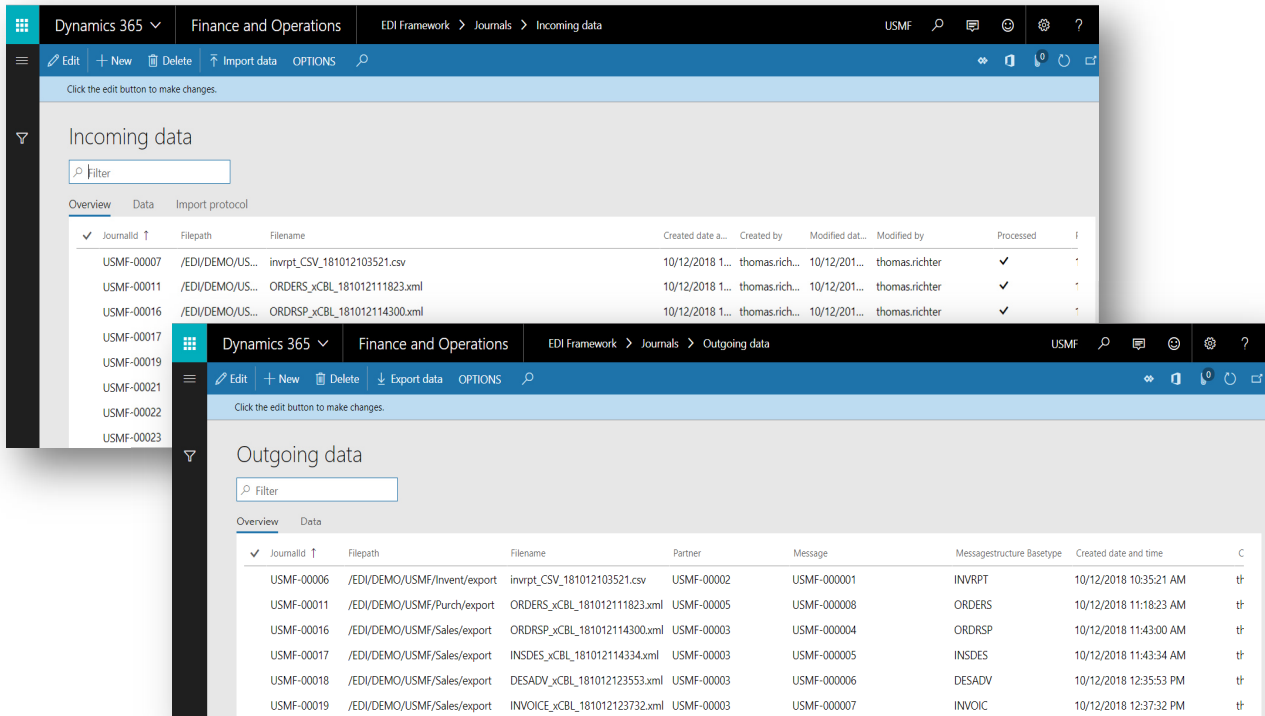
All of the selected section's EDI journals are displayed in the overview.

Depending on the selected job type or journal, individual or several selected journals can be activated or deactivated for import or export and thus for further processing. The same functions are also available in the respective EDI FastTab at the individual journal's level for individual editing, e.g. once changes have been made to the journal.



2.1.2 Captures

Incoming or outgoing data provides an overview of the data records that have been read in by Flow or manually or that have been provided for output.



The screenshot displays two overlapping windows from the Dynamics 365 Finance and Operations EDI Framework. The top window shows the 'Incoming data' table, and the bottom window shows the 'Outgoing data' table.

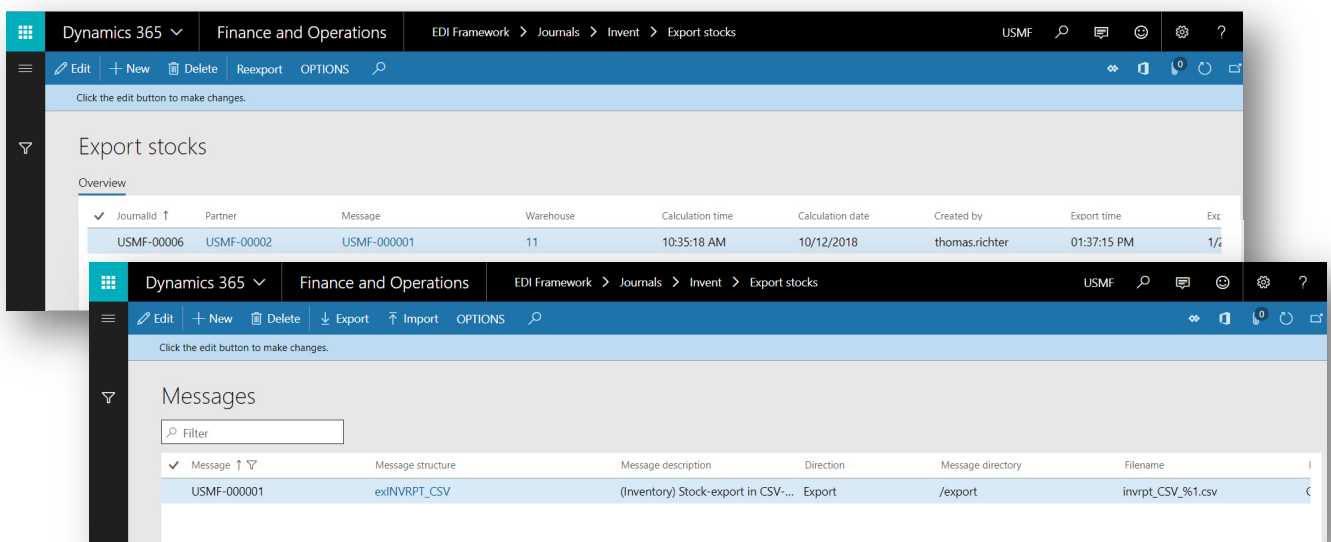
Incoming data table:

Journalid	Filepath	Filename	Created date a...	Created by	Modified dat...	Modified by	Processed
USMF-00007	/EDI/DEMO/US...	invrpt_CSV_181012103521.csv	10/12/2018 1...	thomas.rich...	10/12/201...	thomas.richter	✓
USMF-00011	/EDI/DEMO/US...	ORDERS_xCBL_181012111823.xml	10/12/2018 1...	thomas.rich...	10/12/201...	thomas.richter	✓
USMF-00016	/EDI/DEMO/US...	ORDRSP_xCBL_181012114300.xml	10/12/2018 1...	thomas.rich...	10/12/201...	thomas.richter	✓

Outgoing data table:

Journalid	Filepath	Filename	Partner	Message	Messagestructure Basetype	Created date and time	C
USMF-00006	/EDI/DEMO/USMF/Invent/export	invrpt_CSV_181012103521.csv	USMF-00002	USMF-000001	INVRPT	10/12/2018 10:35:21 AM	th
USMF-00011	/EDI/DEMO/USMF/Purch/export	ORDERS_xCBL_181012111823.xml	USMF-00005	USMF-000008	ORDERS	10/12/2018 11:18:23 AM	th
USMF-00016	/EDI/DEMO/USMF/Sales/export	ORDRSP_xCBL_181012114300.xml	USMF-00003	USMF-000004	ORDRSP	10/12/2018 11:43:00 AM	th
USMF-00017	/EDI/DEMO/USMF/Sales/export	INSDDES_xCBL_181012114334.xml	USMF-00003	USMF-000005	INSDDES	10/12/2018 11:43:34 AM	th
USMF-00018	/EDI/DEMO/USMF/Sales/export	DESADV_xCBL_181012123553.xml	USMF-00003	USMF-000006	DESADV	10/12/2018 12:35:53 PM	th
USMF-00019	/EDI/DEMO/USMF/Sales/export	INVOICE_xCBL_181012123732.xml	USMF-00003	USMF-000007	INVOIC	10/12/2018 12:37:32 PM	th

The entries relating to Warehouse / Purchasing and Sales then contain the journals that were generated from this incoming data or that formed the basis of this outgoing data.



The screenshot displays two overlapping windows from the Dynamics 365 Finance and Operations EDI Framework. The top window shows the 'Export stocks' table, and the bottom window shows the 'Messages' table.

Export stocks table:

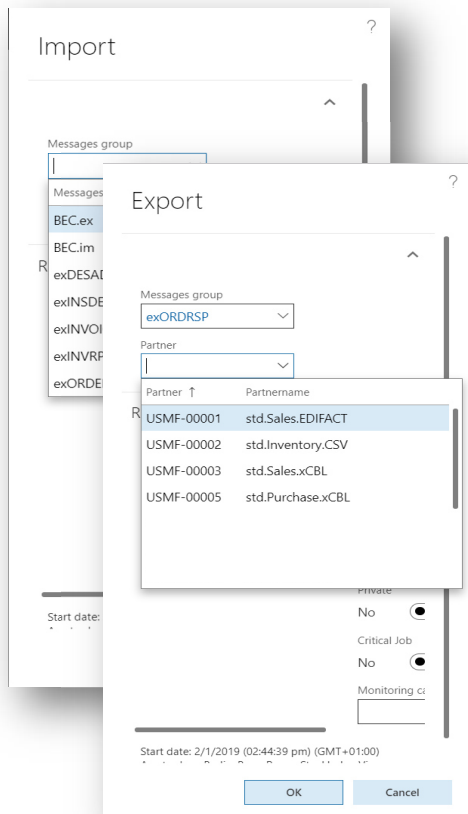
Journalid	Partner	Message	Warehouse	Calculation time	Calculation date	Created by	Export time	Exp
USMF-00006	USMF-00002	USMF-000001	11	10:35:18 AM	10/12/2018	thomas.richter	01:37:15 PM	1/4

Messages table:

Message	Message structure	Message description	Direction	Message directory	Filename
USMF-000001	exINVRPT_CSV	(Inventory) Stock-export in CSV-	Export	/export	invrpt_CSV_%1.csv

2.1.3 Periodical

In the Periodical section, the import and export programs can be interactively called up or configured for the batch run. Filters enable exact configuration.



The results of these import and export runs are displayed in the Batch Jobs application.

'Category Tables Layout' structures the table of categories that can be used in the reports.

The program must always be launched when

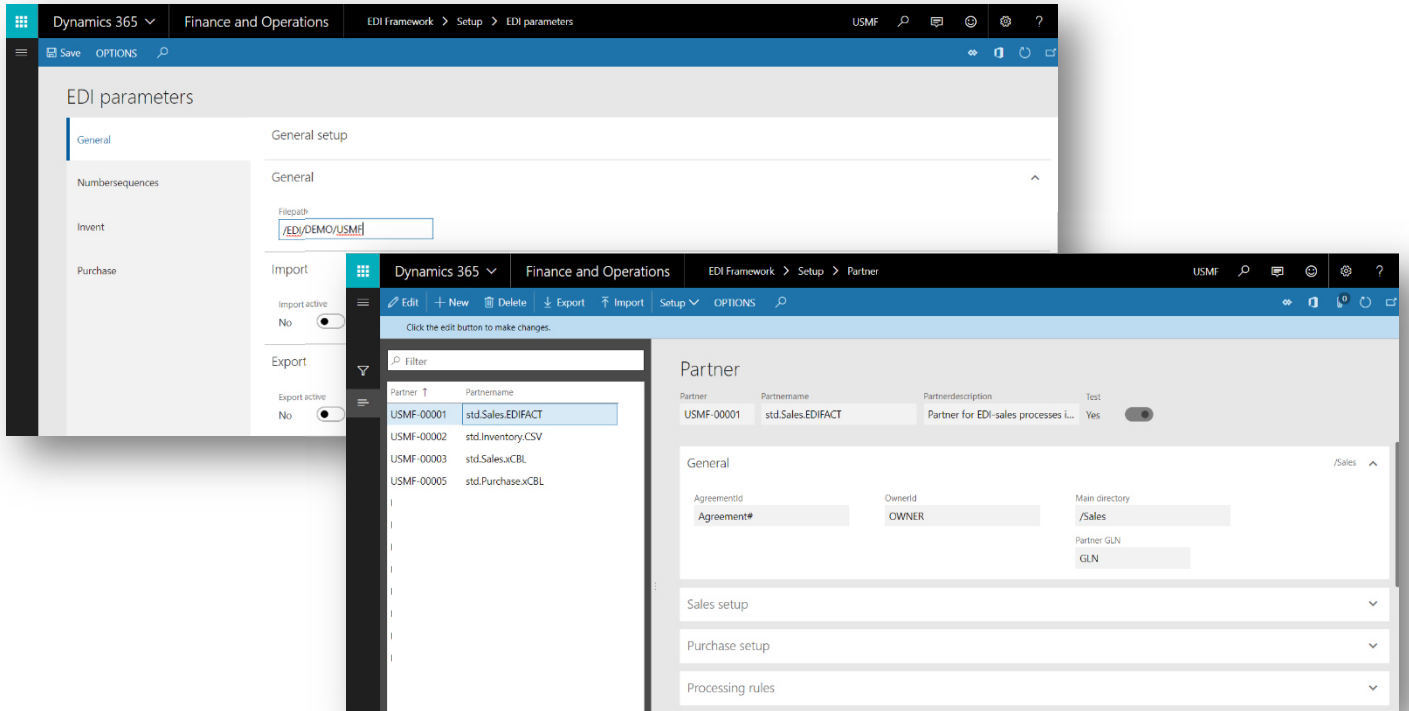
- starting with the EDI framework;
- starting a new client with EDI functionalities;
- new import or export categories have been developed; or
- the name or the category ID changes for existing import or export categories.

The 'Methods' table is filled from the definition in the 'Table Methods Definition' using 'Method Support Layout'. It must be executed whenever the data model changes, i.e. when new tables

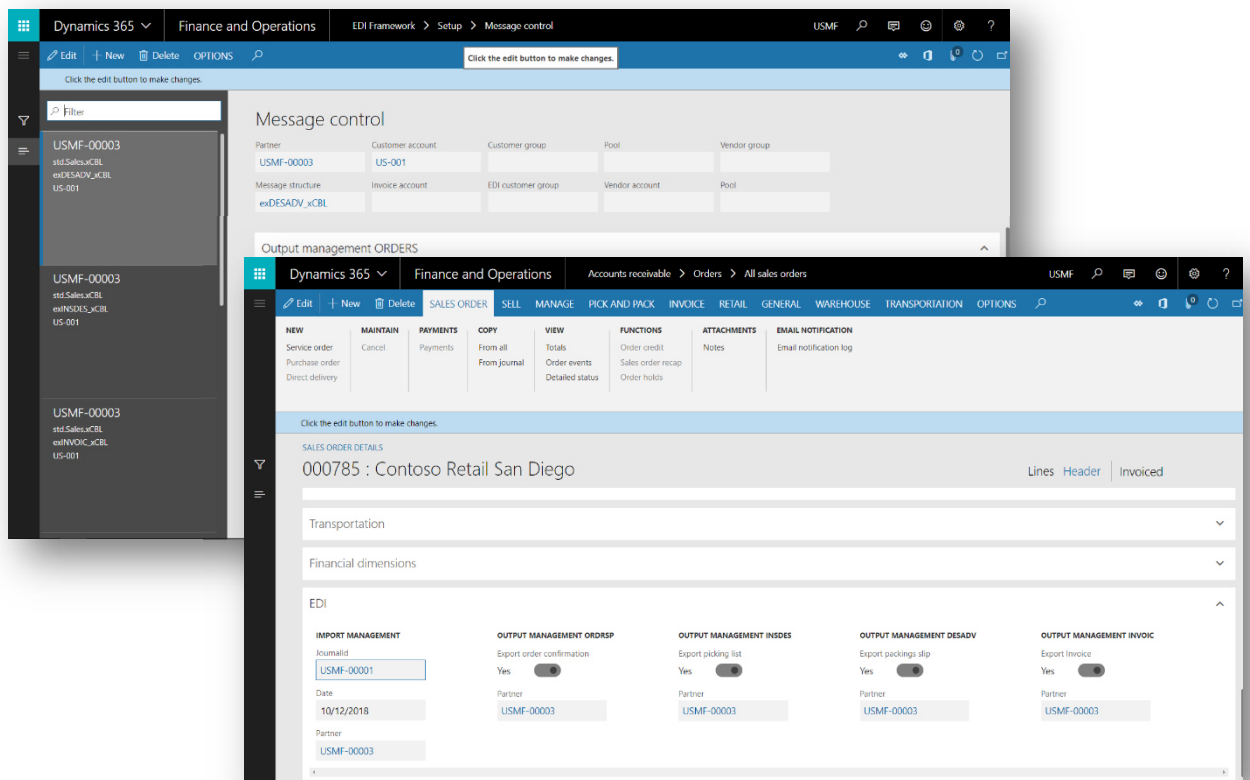
can be imported / exported or new fields are added to existing tables.

2.1.4 Settings

The framework's basic parameter settings are made in Settings. To name but a few examples, these include the number ranges to be used, the general storage directories and the journal names for stock and advice notes. The EDI partners are created and the partner-specific EDI settings are made in the partner form. These include, for example, defining a partner-related storage directory, a partner GLN (for conversion) or processing rules for processing messages. The partner reports are also defined here, i.e. all import and export processes that are active for this EDI partner. An overview of the EDI reports issued with the partner is also displayed.

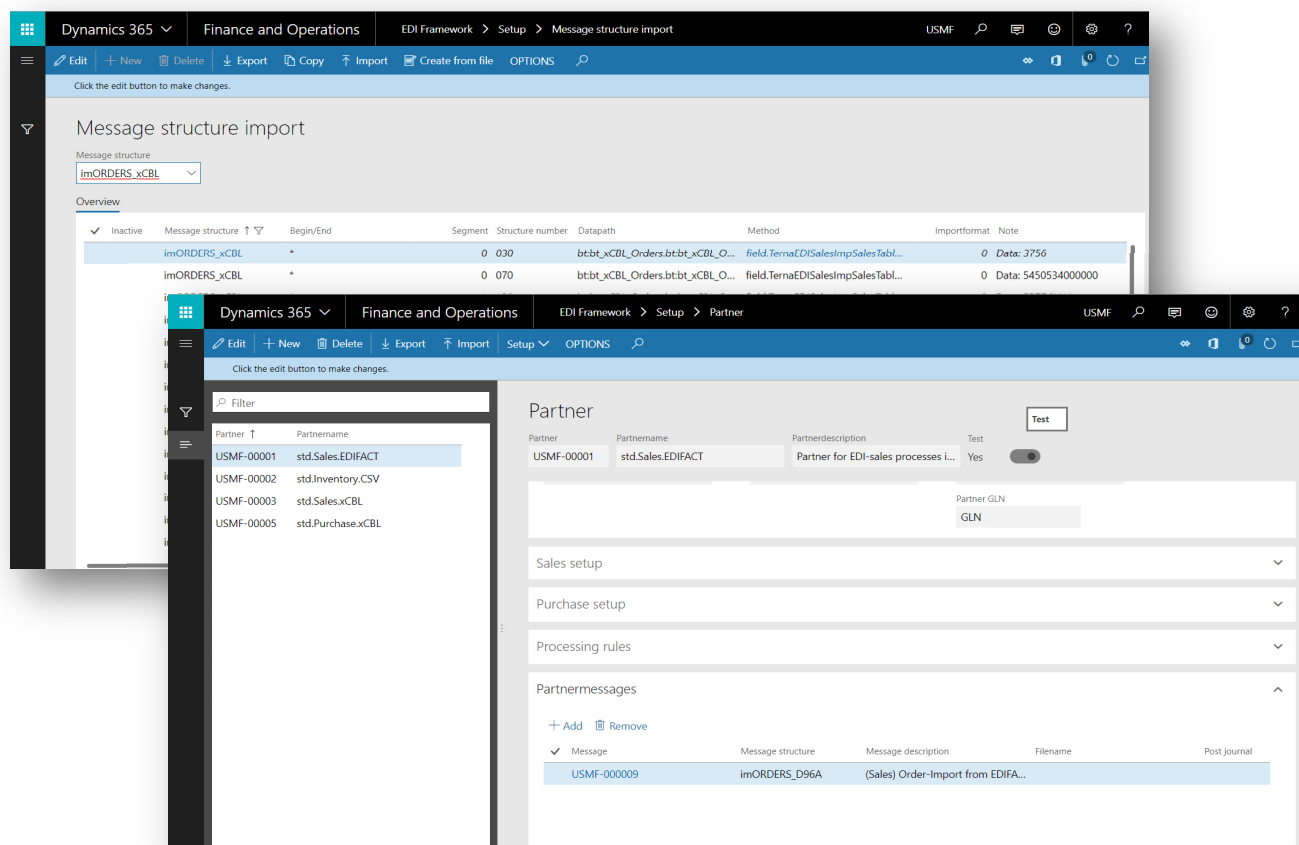


The partner settings can also be used to control the output of journals during EDI import (sales jobs only). Whether output is to take place is controlled in the partner reports.



The reports to be assigned to the partner are created in the Reports form. Message Control regulates the automatic assignment of jobs to EDI partners. If certain criteria are met, the EDI fields in jobs or orders are filled.

Message layouts are used when setting up the message structure. The message layouts are assigned to the partners via the reports.



3 Process

Incoming data is generated by uploading entities (e.g. MS Flow) or manual data import. Once the upload has been successfully completed, the data is mapped to partners via Message Control during the subsequent import process. Jobs or similar items can be generated from the settings, processing rules and partner reports saved for the partners. For exporting e.g. job confirmations or invoices, the process is the other way around. The generated messages in the outgoing data can then, in turn, be output again automatically or by manual export (file directory).