



**Dynamics 365 / CRM Platform**



# User Guide



**CRM Versions Supported: 2013/2015/2016/D 365**

NotePro adds enhanced capability that resembles Microsoft Word or Note to any standard or custom CRM Entity form. It's a self-install set-up. CRM Notes improves capturing all kinds of Notes in CRM with improved visual formatting of styles & fonts.

Coding Version : 1.0.0.0  
Document Version : 1.0.0.0  
Date of Document : June 22, 2016

---

## Copyright

Copyright ©2016, Management Technology Consulting LLC, Inc. All rights reserved.

Your right to copy this documentation is limited by copyright law and the terms of the software license agreement. As the software licensee, you may make a reasonable number of copies or printouts for your own use. Making unauthorized copies, adaptations, compilations, or derivative works for commercial distribution is prohibited and constitutes a punishable violation of the law

## Disclaimer

Information in this document is subject to change without notice and should not be construed as a commitment on the part of Management Technology Consulting LLC and does not assume any responsibility or make any warranty against errors that may appear in this document and disclaims any implied warranty of the merchantability or fitness for a particular purpose.

---

## Table of Contents

<b>COPYRIGHT .....</b>	<b>2</b>
<b>DISCLAIMER.....</b>	<b>2</b>
<b>LICENSE KEY .....</b>	<b>5</b>
<b>INSTALLATION .....</b>	<b>6</b>
Installing Licensing Solution .....	7
Installing NotePro Solution .....	9
<b>DYNAMICS 365 SOLUTION - TRIAL LICENSE ACTIVATION/ PRODUCT LICENSE PURCHASE/ ADDITIONAL USER LICENSE PURCHASE.....</b>	<b>14</b>
<b>NOTEPRO FUNCTIONALITY .....</b>	<b>15</b>
<b>ONE TIME SETTING FOR EACH ENTITY.....</b>	<b>15</b>
<b>UNINSTALLATION PROCESS .....</b>	<b>22</b>
<b>MTC OVERVIEW .....</b>	<b>23</b>
The Global CRM Community DynamicsExchange.com.....	24
End User License Agreement (EULA) .....	24

---

## Table of Figures

Figure 1: Developer Resources .....	5
Figure 2 : Organization Unique Name .....	5
Figure 3: Import Solution .....	6
Figure 4 : Select Solution Package .....	7
Figure 5: Importing Options window .....	8
Figure 6: Import Option .....	8
Figure 7: Importing Solution – Licensing .....	9
Figure 8 : Select Solution Package .....	10
Figure 9: Solution Information .....	10
Figure 10 : Importing Options window .....	11
Figure 11: Importing Solution – Purchase solution .....	11
Figure 12 : Navigation for licensing window .....	12
Figure 13 : Placing the License key .....	13
Figure 14: CRM Account from showing (...) .....	15
Figure 15: CRM Form setting .....	16
Figure 16: Add Web Resource .....	16
Figure 17: Form Ribbon .....	17
Figure 18: Account Entity with NotePro .....	18
Figure 19: NotePro in Zoom .....	18
Figure 20: NotePro with Rich Text formatting icons .....	19
Figure 21: NotePro with Image addition facility .....	20
Figure 22: Account Entity with NotePro created .....	21
Figure 23 : Deleting NotePro Solution .....	22
Figure 24: Solution Deleted .....	22

## License Key

- To install NotePro solution, you will require License key, which you can get by sending an email Request to [salesteam@mtccrm.com](mailto:salesteam@mtccrm.com) with your Organization Unique name.
- To access your Organization Unique name click on **Settings→Customizations→Developer Resources** as shown below figure.

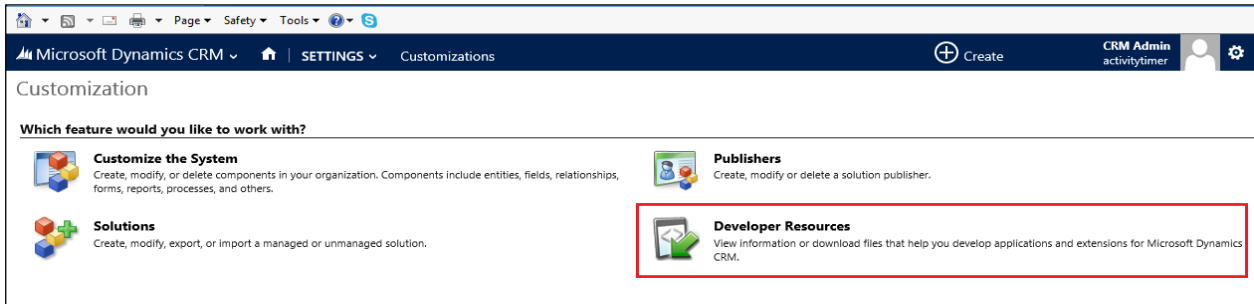


Figure 1: Developer Resources

- A window will pop up with Organization Unique Name as shown below.

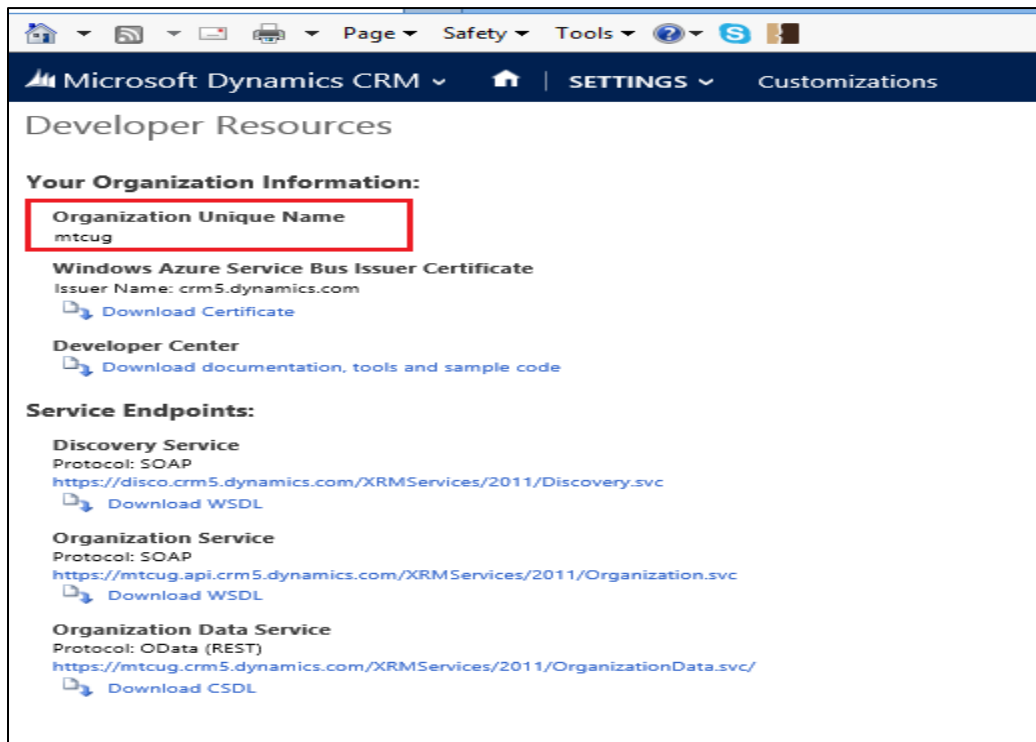


Figure 2 : Organization Unique Name

**NOTE: After placing the request you will receive the LICENSE KEY within 24 hrs.**

## Installation

To install the NotePro solution, the following steps are to be followed

### STEP 1:

- Go to <http://www.dynamicsexchange.com/Note.aspx> and click on Download to get Solution.

### STEP 2:

- On Downloading the solution, you will get **NotePro Solution.zip** (ZIP file).
- Extract the files from the downloaded folder. You will get two WINRAR ZIP files.



NotePro\_1\_0\_0\_0\_managed.zip



Licensing\_1\_0\_3\_0\_managed.zip

NOTE: For installation, the **Solution** need to be imported into CRM

### STEP 3:

- Open your CRM click on **Settings→Solution→Import** it will open import Solution window.

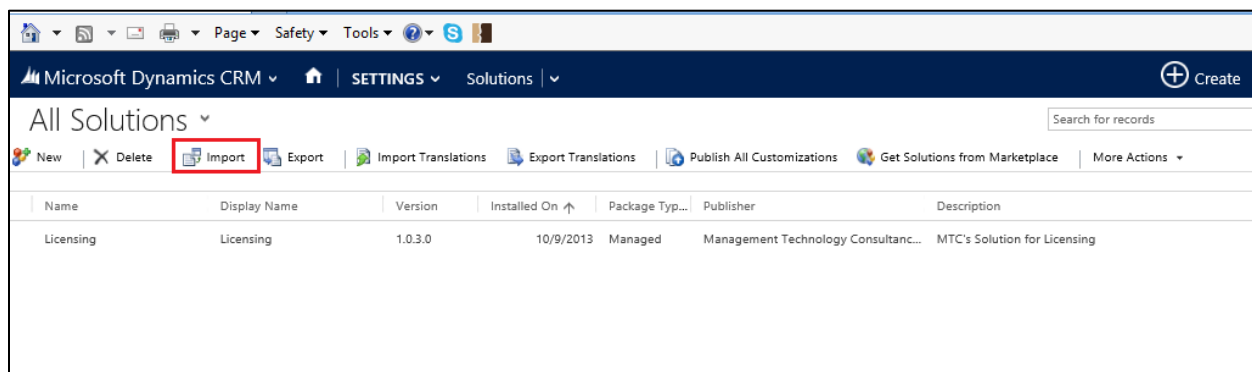


Figure 3: Import Solution

- In Import Solution Window you can browse and Select Solution Package zip file and then click on Next for further processing.

## Installing Licensing Solution

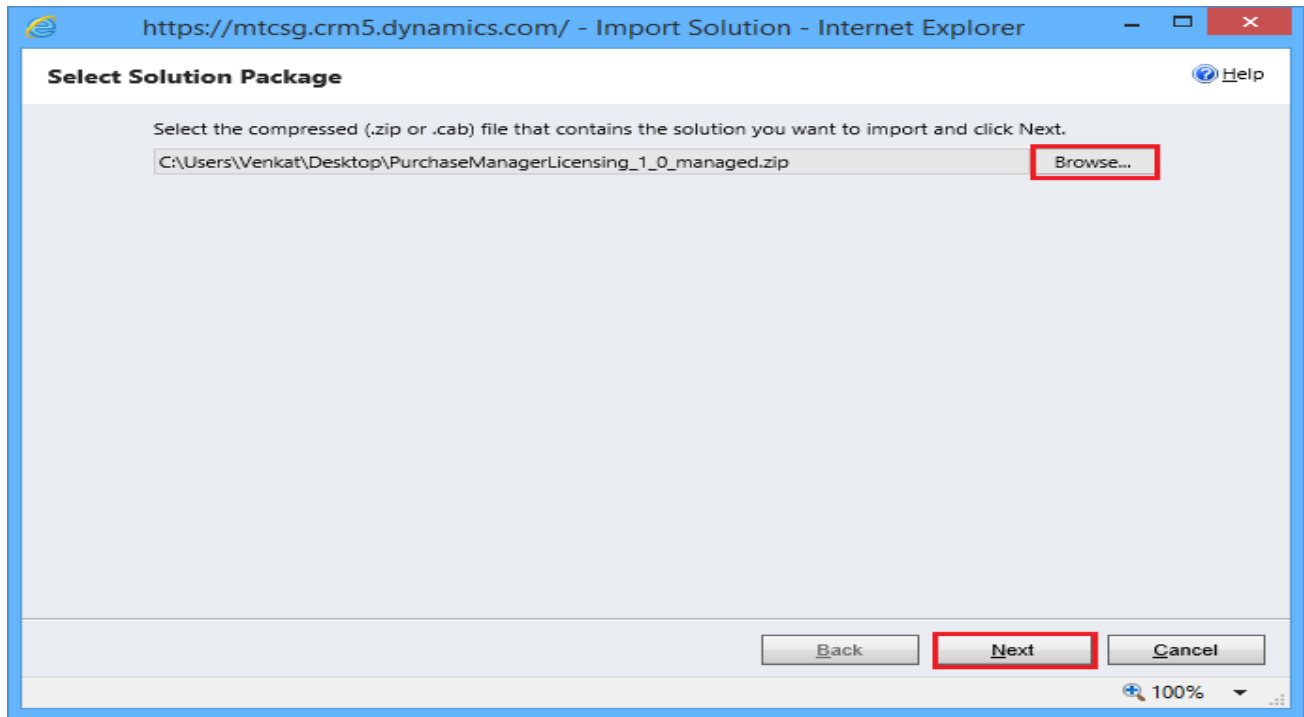


Figure 4 : Select Solution Package

- In Import Solution Window you can browse and Select Solution Package zip file and then click on Next for further processing.

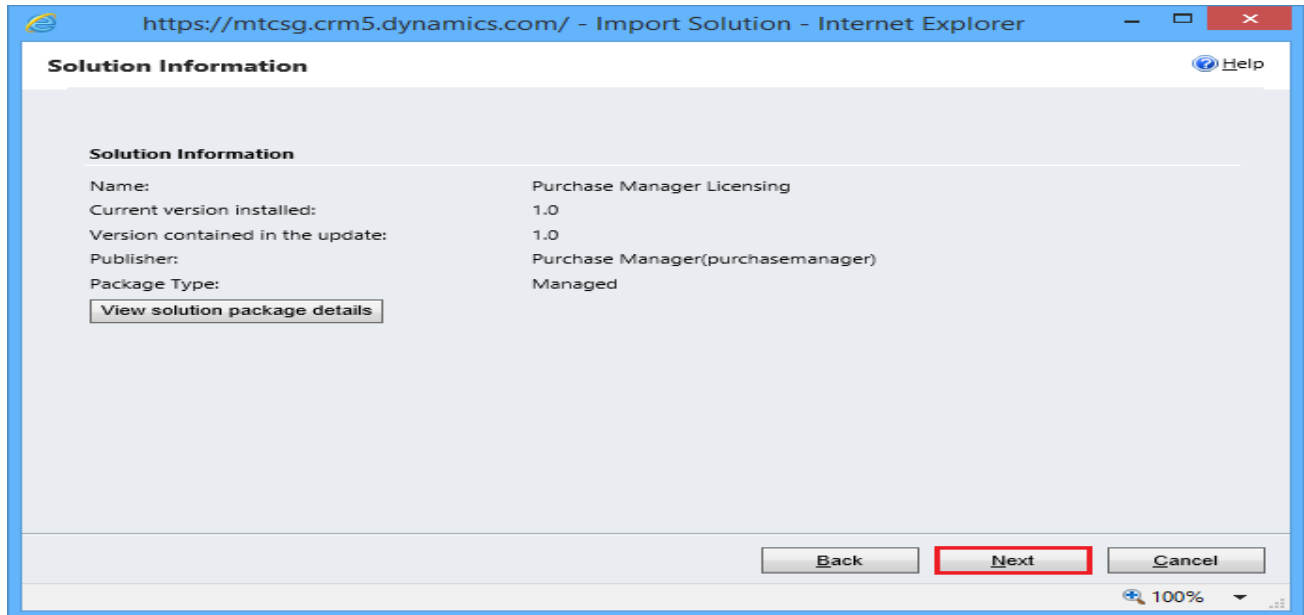


Figure 5: Importing Options window

- Click on Next to proceed.

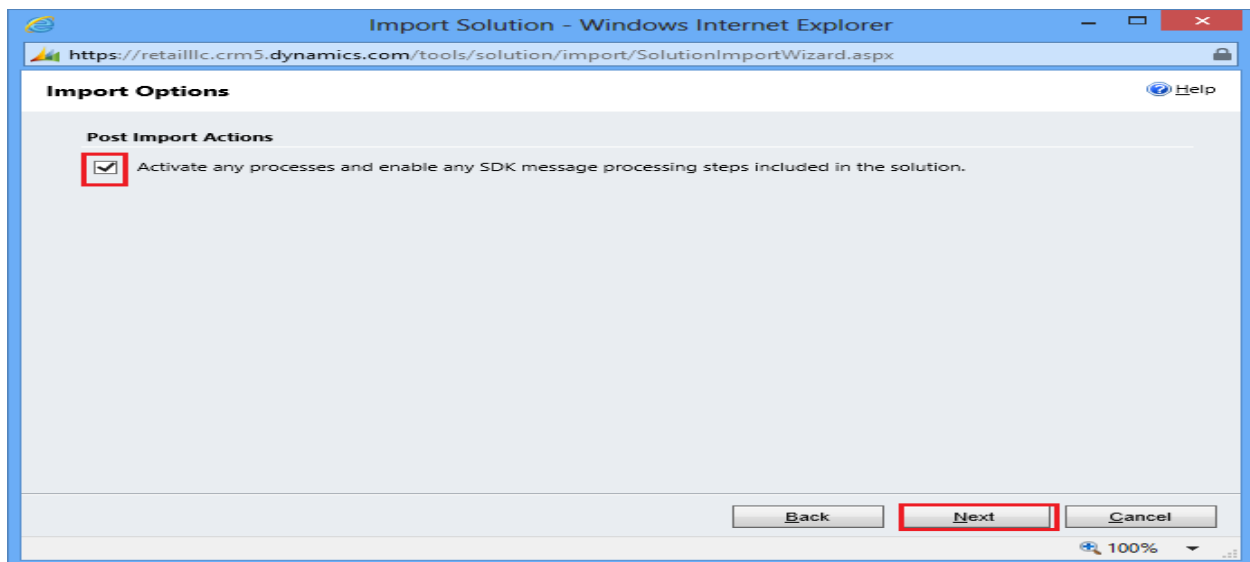


Figure 6: Import Option

- Click on Next to proceed.



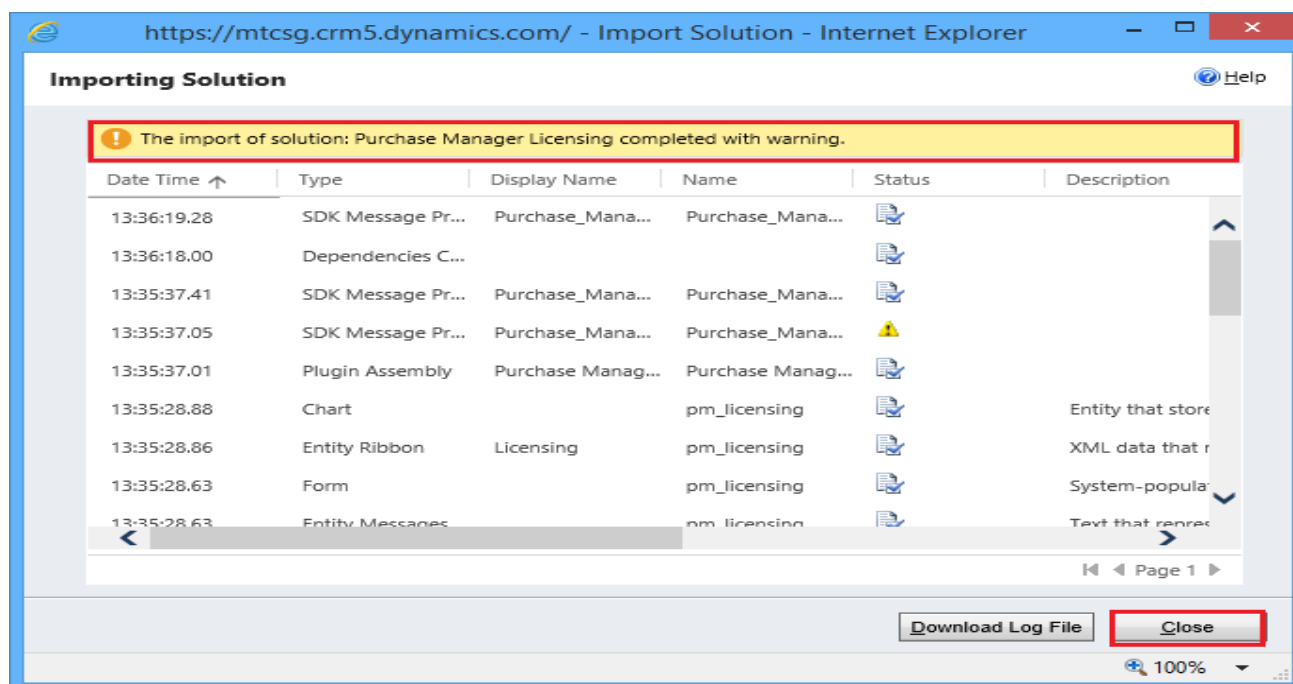


Figure 7: Importing Solution – Licensing

- Click on Close after successful completion message is displayed.

## Installing NotePro Solution

- Select Solution NotePro Solution

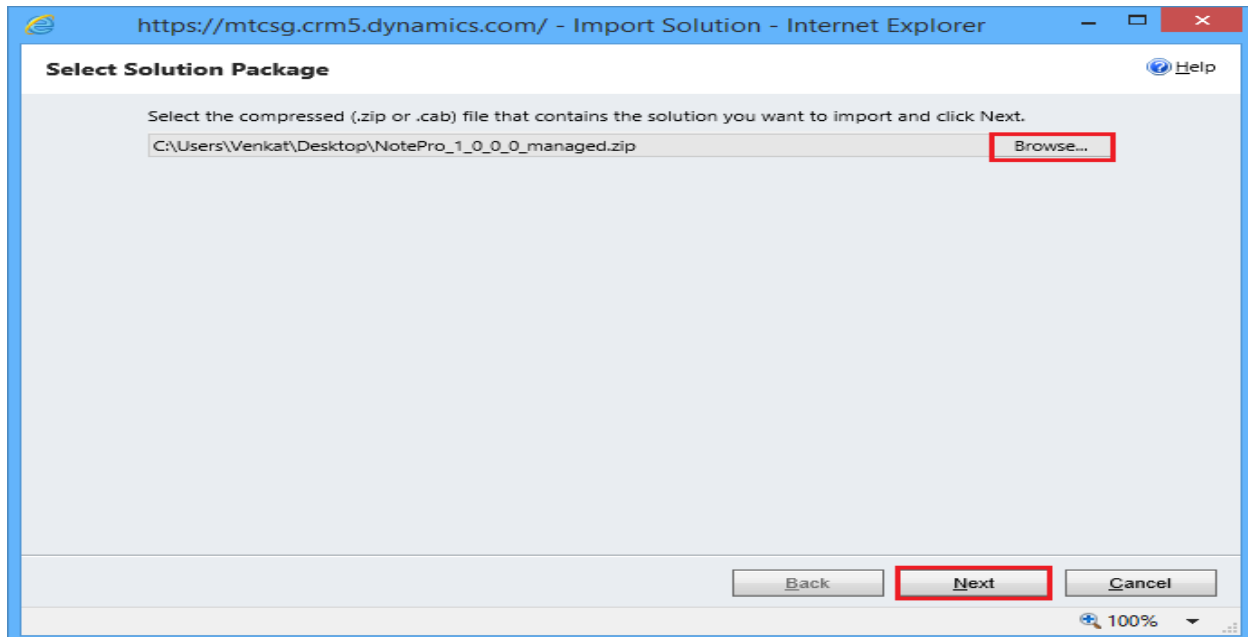


Figure 8 : Select Solution Package

- Click on next to Continue.

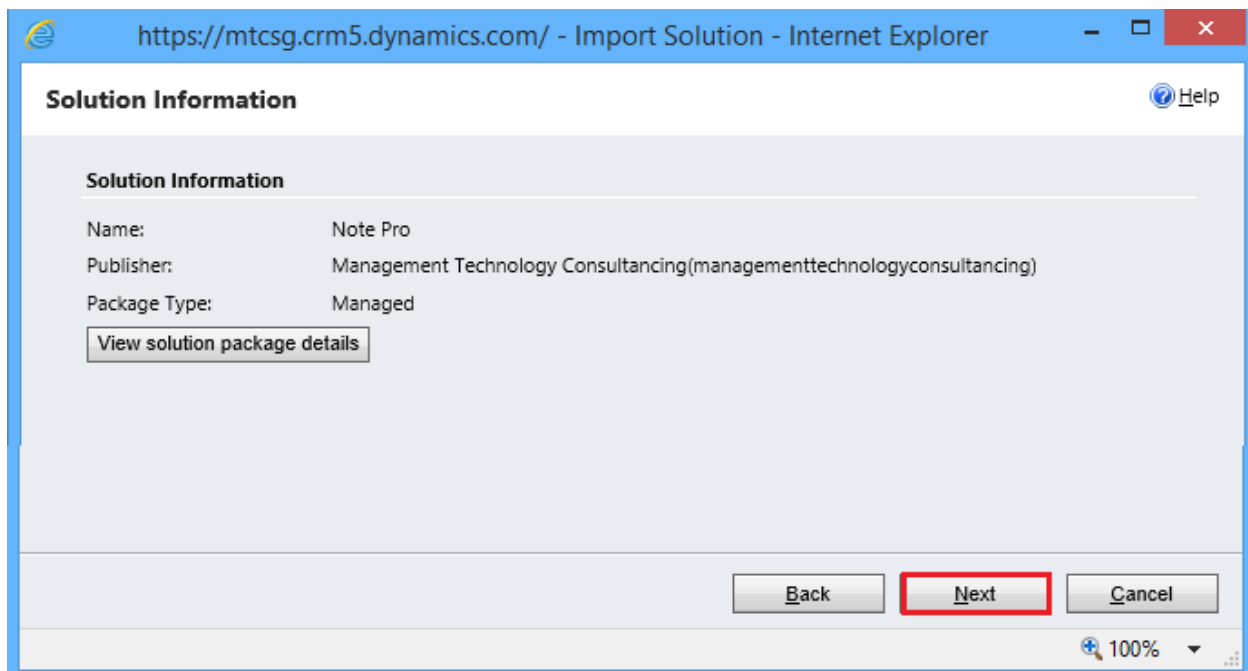


Figure 9: Solution Information

- Click on next to Continue.

- Select the Check Box which comes in between as “**Activate any process and enable any SDK message processing steps included in the solution.**” Press Next to continue.
- Click on next until it is finished and finally click on close.

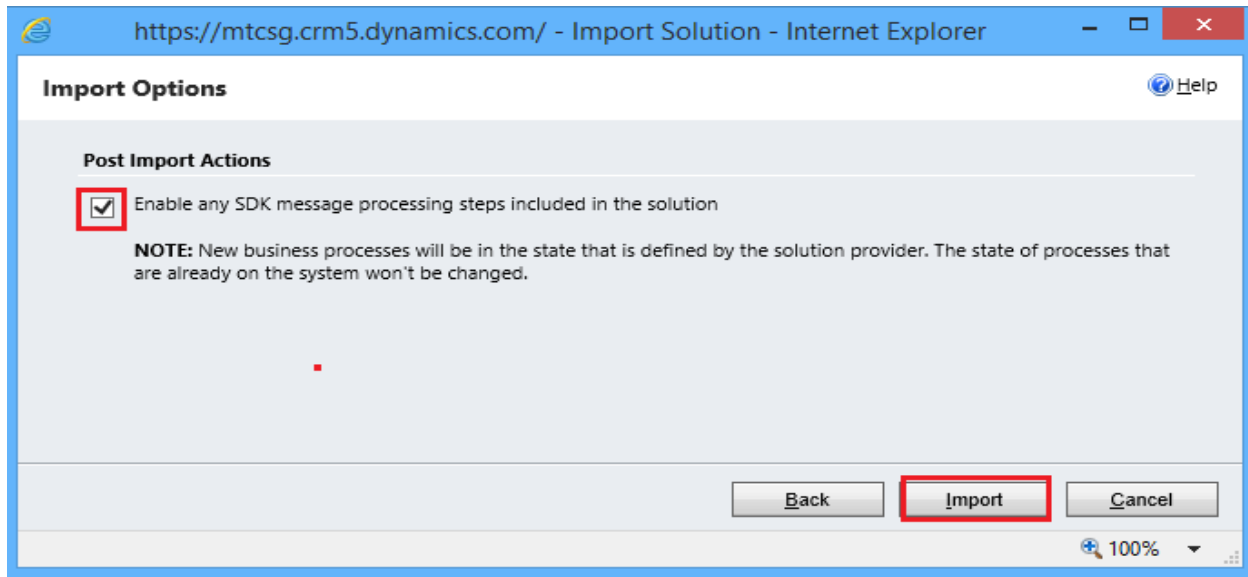


Figure 10 : Importing Options window

- Click on next it will open importing solution window in that dialog will be opened displaying the message importing the customization please wait for the operation to complete.

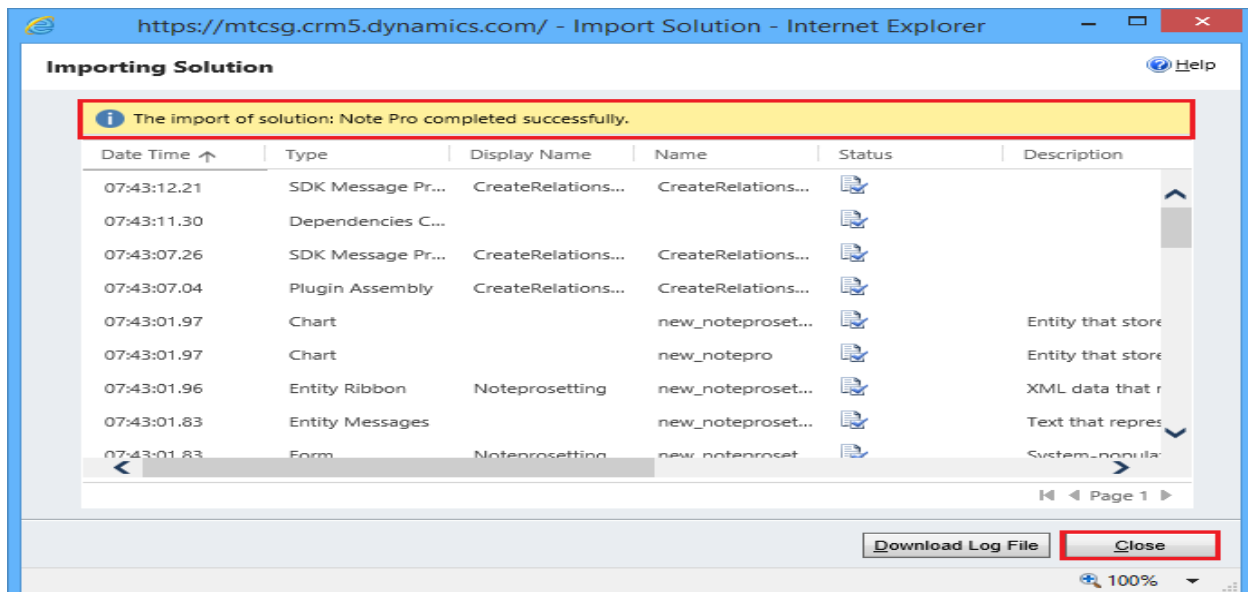
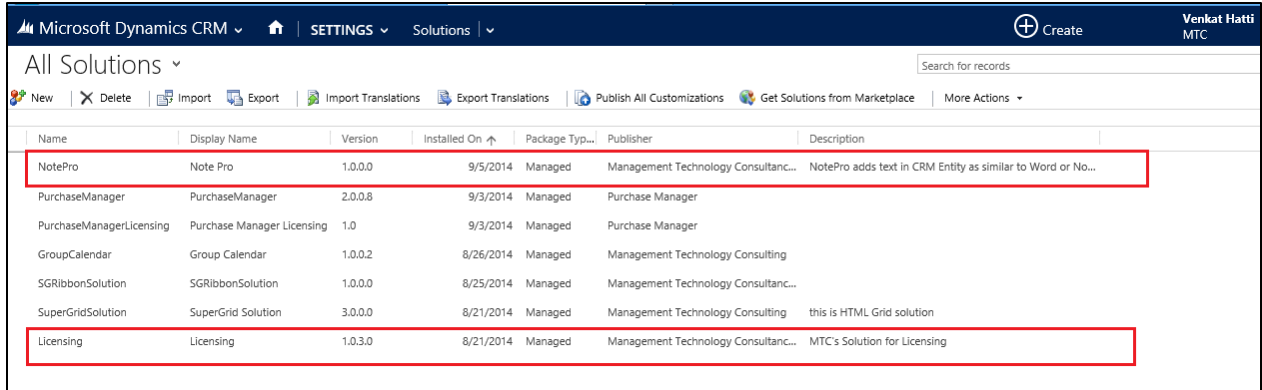


Figure 11: Importing Solution – Purchase solution

- Click on Close after successful completion message is displayed.
- After importing the NotePro Solution you need to place the License key navigate to **Settings**

### →Solution



The screenshot shows the 'All Solutions' window in Microsoft Dynamics CRM. The table lists various solutions installed on the system. Two rows are highlighted with red boxes: 'NotePro' and 'Licensing'.

Name	Display Name	Version	Installed On	Package Typ...	Publisher	Description
NotePro	Note Pro	1.0.0.0	9/5/2014	Managed	Management Technology Consultanc...	NotePro adds text in CRM Entity as similar to Word or No...
PurchaseManager	PurchaseManager	2.0.0.8	9/3/2014	Managed	Purchase Manager	
PurchaseManagerLicensing	Purchase Manager Licensing	1.0	9/3/2014	Managed	Purchase Manager	
GroupCalendar	Group Calendar	1.0.0.2	8/26/2014	Managed	Management Technology Consulting	
SGRibbonSolution	SGRibbonSolution	1.0.0.0	8/25/2014	Managed	Management Technology Consultanc...	
SuperGridSolution	SuperGrid Solution	3.0.0.0	8/21/2014	Managed	Management Technology Consulting	this is HTML Grid solution
Licensing	Licensing	1.0.3.0	8/21/2014	Managed	Management Technology Consultanc...	MTC's Solution for Licensing

Figure 12 : Navigation for licensing window

- Select the product as **NotePro**.
- Click on License.
- Enter the License key which you have received after placing the request presses the tab to enable submit button and click on submit then a pop up window appears and displays the message as **License Accepted**. Click on **OK**.

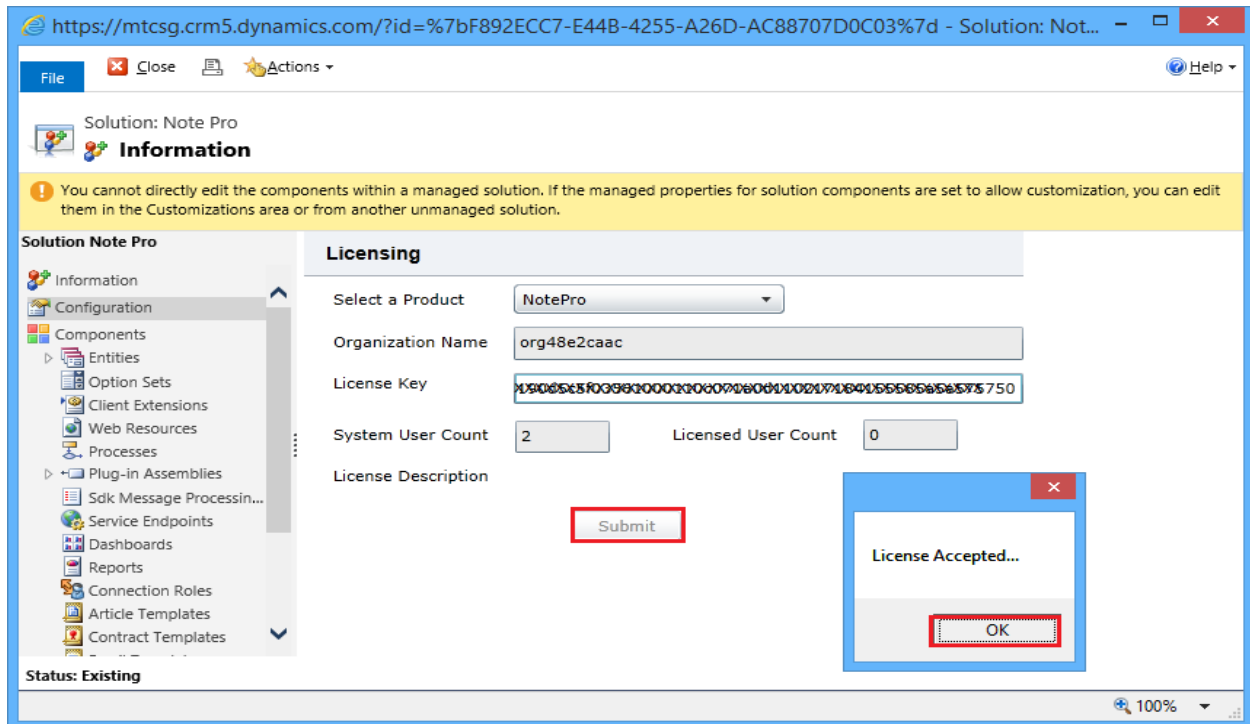


Figure 13 : Placing the License key

---

## Dynamics 365 Solution - Trial License Activation/ Product License Purchase/ Additional User License Purchase

Please refer the below link for Trial License Activation and/or Product License Purchase and/or Additional User License Purchase for MTC's Dynamics 365 Solution.

<https://www.mtccrm.com/PLI>

*In case of queries or issues, please write down to [salesteam@mtccrm.com](mailto:salesteam@mtccrm.com) for quick help.*

## NotePro Functionality

- NotePro adds text in CRM Entity as similar to Word or Notepad & including images.
- NotePro allows the Rich text format using Styles & Fonts
- Facility to Add New Notes, Flag Mark the Notes or mark as Important Notes.

## One Time Setting for Each Entity

- User Needs to configure the setting for every entity that he intends to use this NotePro facility.
- For Example user wants this NotePro in Accounts Entity.
- Go to **Sales->Accounts** Select any of the existing records and open the form.

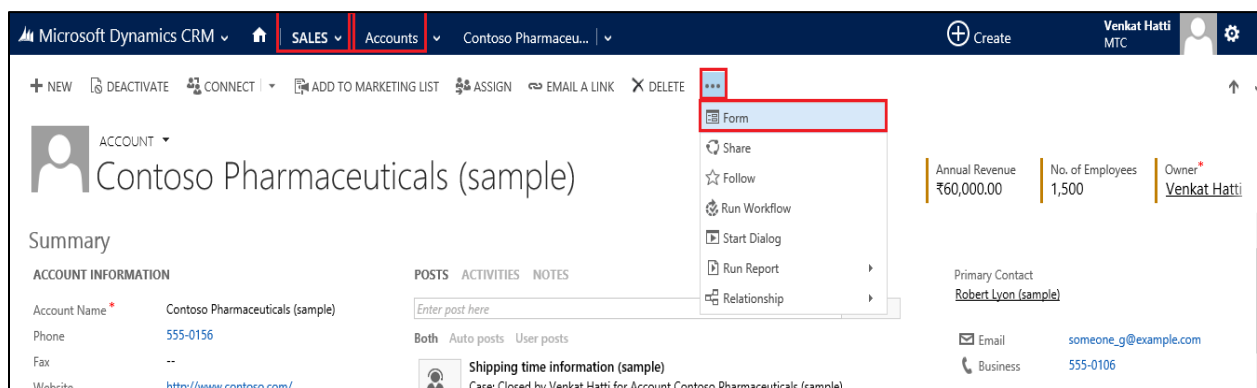


Figure 14: CRM Account from showing (...)

- Select (...) more and from the list click on Forms.
- Select Insert tab, then select ONE Section on One Tab on the form.
- Suppose you have selected One tab, hen a tab is inserted on the form.

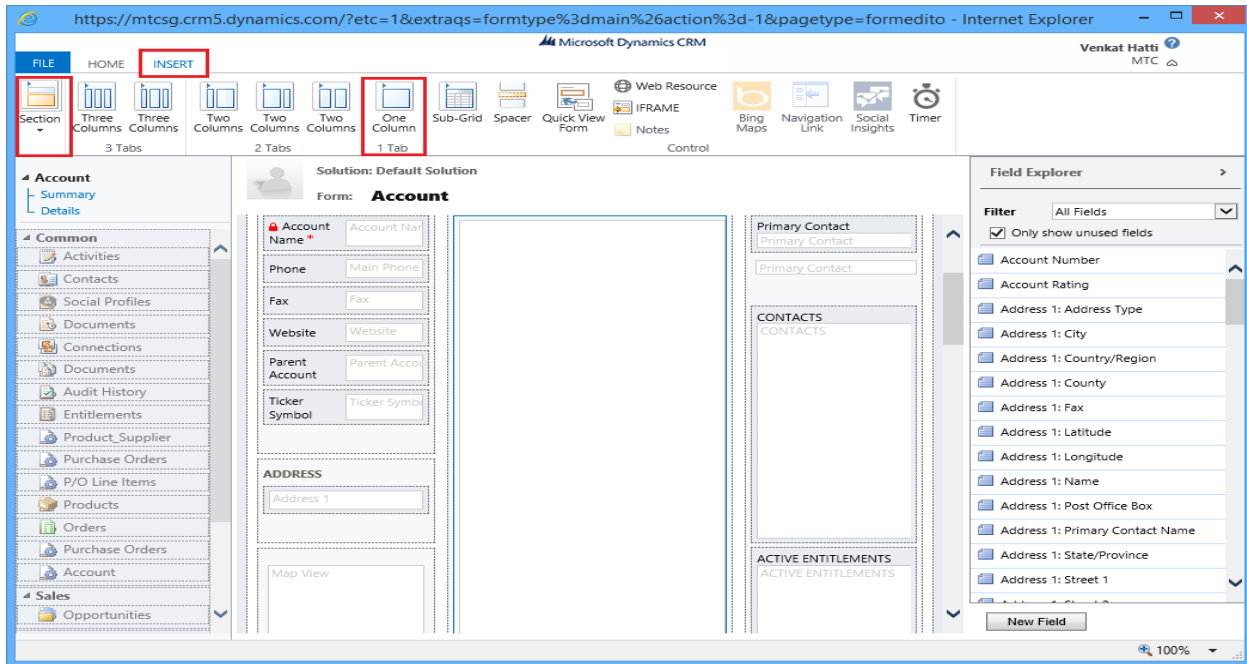


Figure 15: CRM Form setting

- Now Select The Web Resource on from the ribbon of the form.

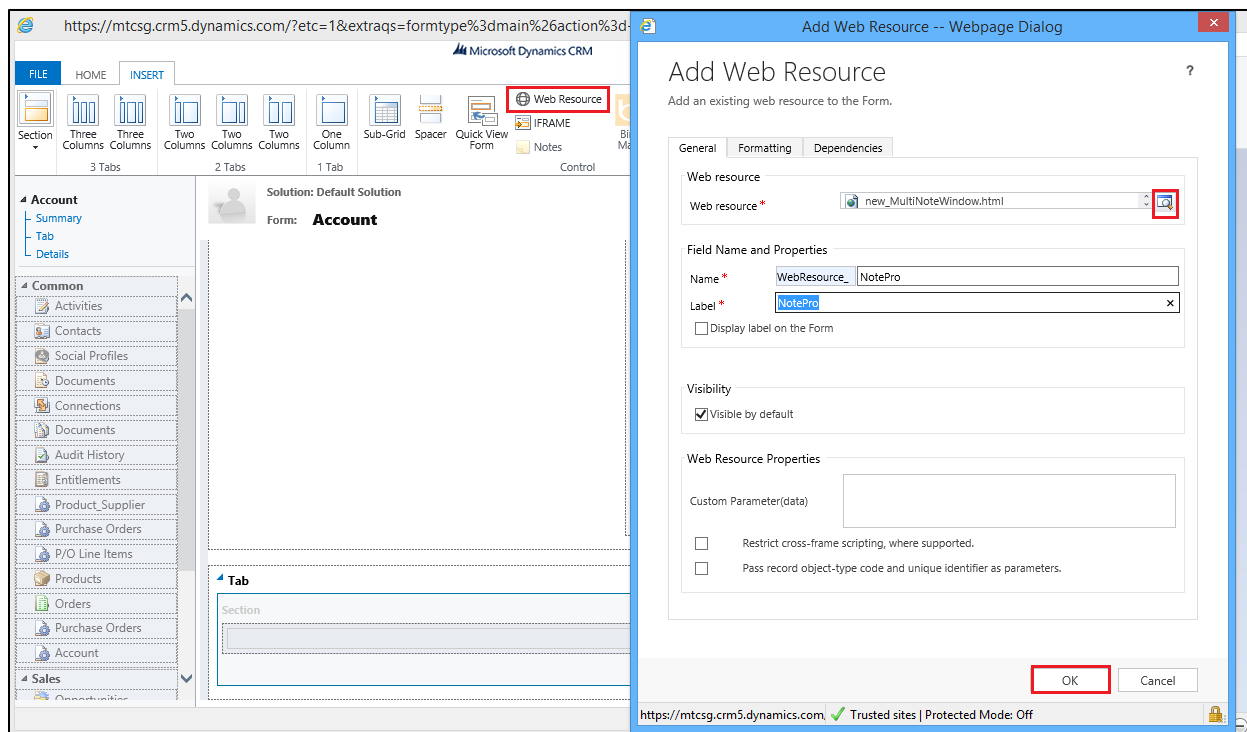


Figure 16: Add Web Resource



- Select Web resource as **new\_MultiNoteWindow.html** from the list provided
- In Field Name & properties give ex. NotePro
- Click Ok to Continue
- On the Form page click back on Home tab
- Save the form
- And Finally Publish

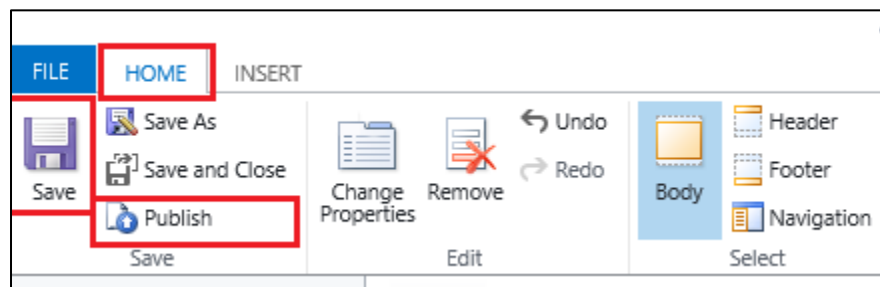


Figure 17: Form Ribbon

- Now go back to the Account form
- Refresh the form
- You will see that a new tab with NotePro created and ready to use.

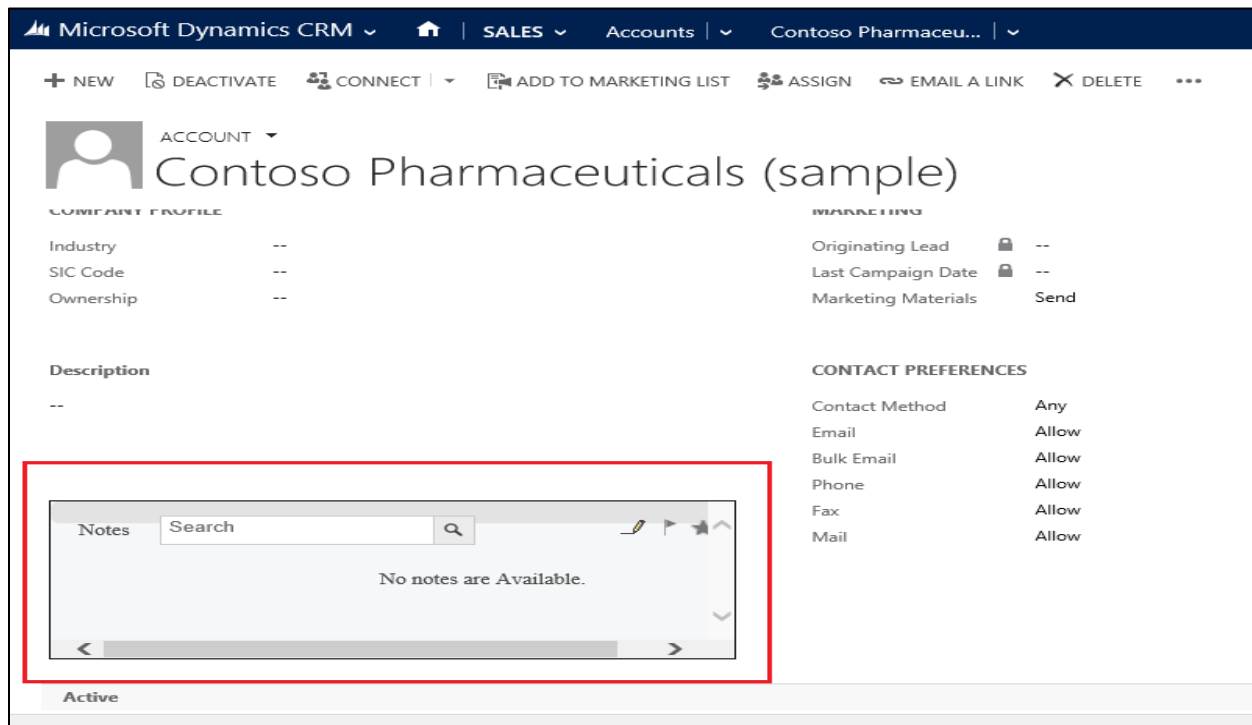


Figure 18: Account Entity with NotePro

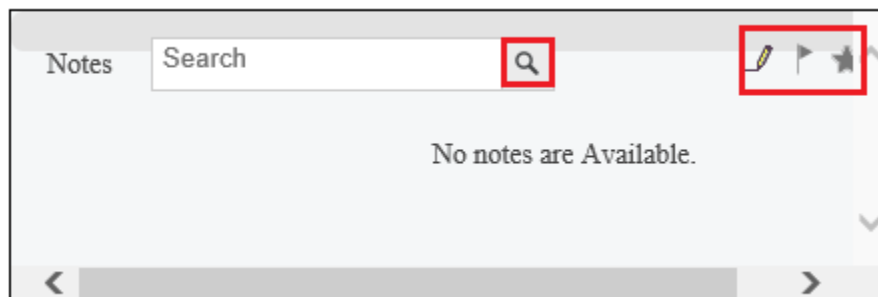


Figure 19: NotePro in Zoom



- The First Icon (Pencil) is to create new Notes
- The Middle icon (Flag) is to Flag Mark the Notes
- The Last icon (Star) is to mark the existing notes as Important
- To Create New Notes click on the First icon

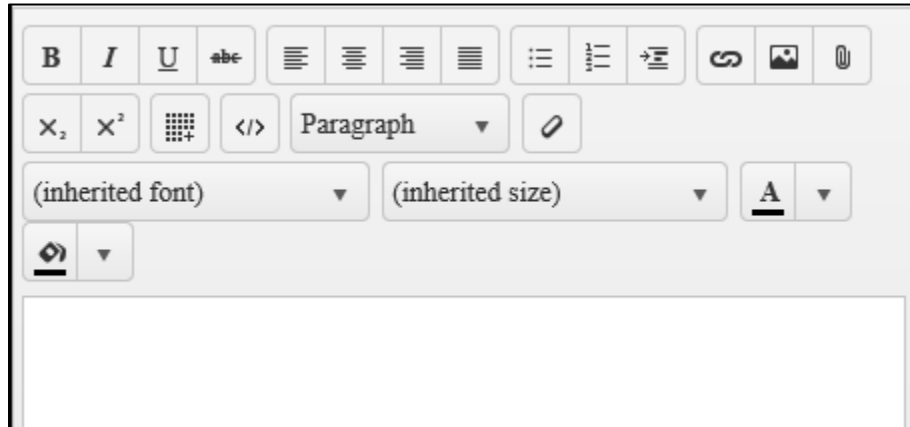



Figure 20: NotePro with Rich Text formatting icons

- Type in at the space provided. This has all the Rich text format icons which are helpful in editing the document. After entering the text or image click on Submit which is placed at the bottom of the page to save the content.
- User can also insert the Images in the space provided. For Example click on  to import Images form the web.

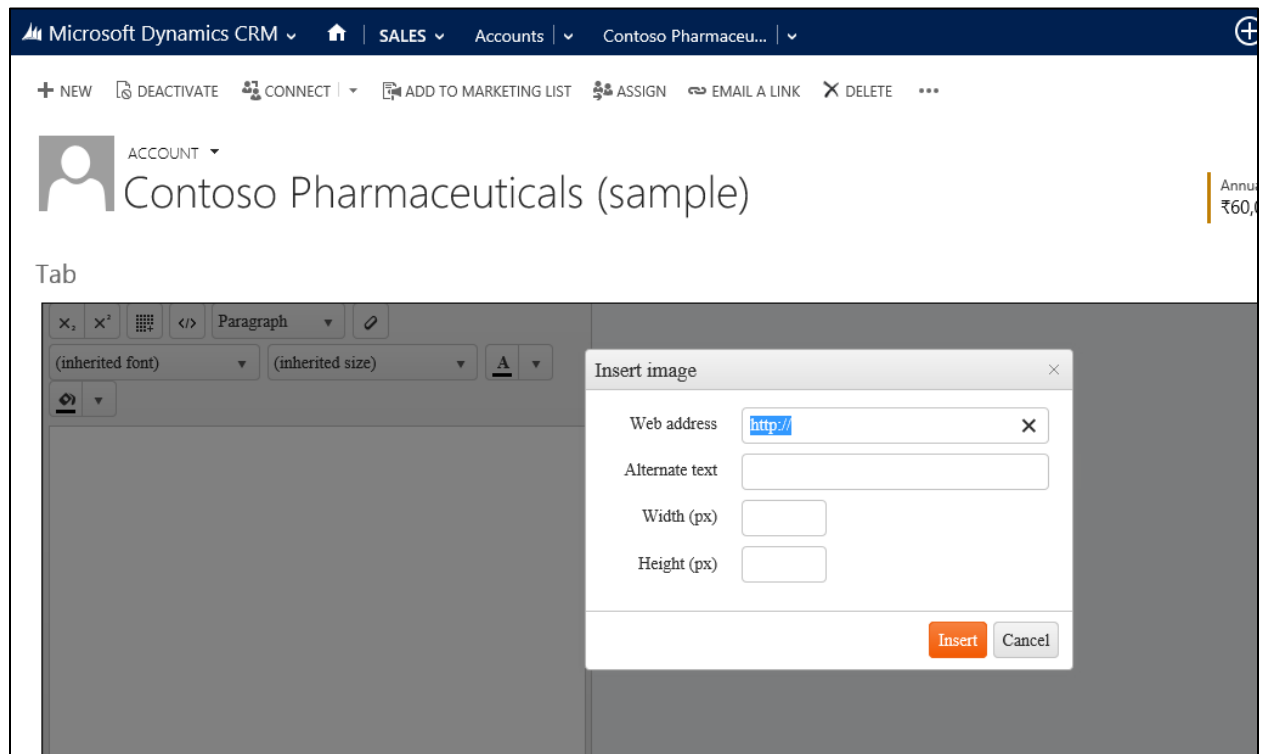


Figure 21: NotePro with Image addition facility

- Enter the Web Address
- Key in Alternate text and Width and Height (px) if required
- Finally click on Inset to get image in NotePro

- Once the Note is created it looks as shown below

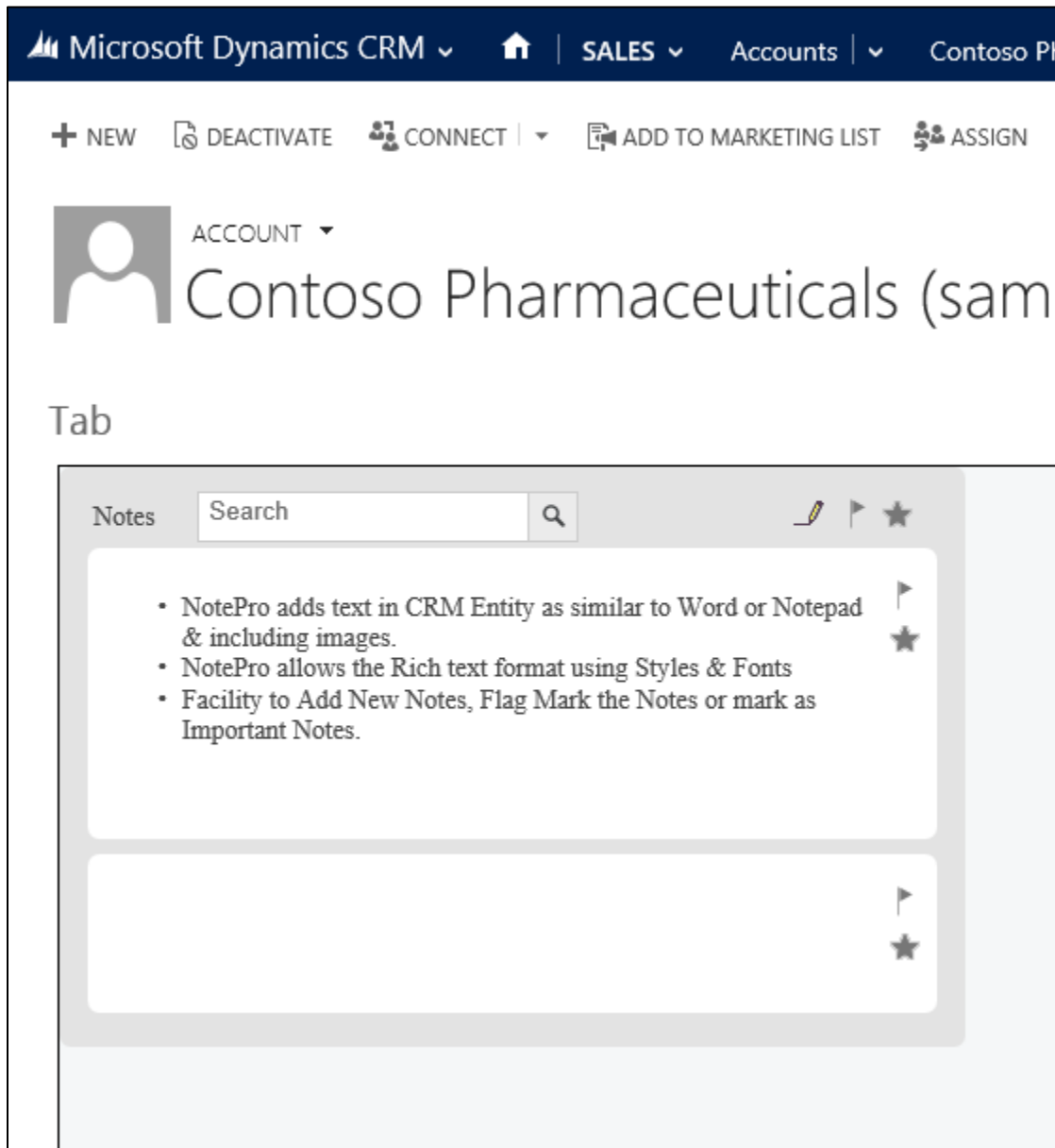


Figure 22: Account Entity with NotePro created

## Uninstallation Process

- To uninstall NotePro you need to delete NotePro Solution. Navigation is **Settings** → **Solutions** → Select the check box of NotePro then click on **Delete** as shown below

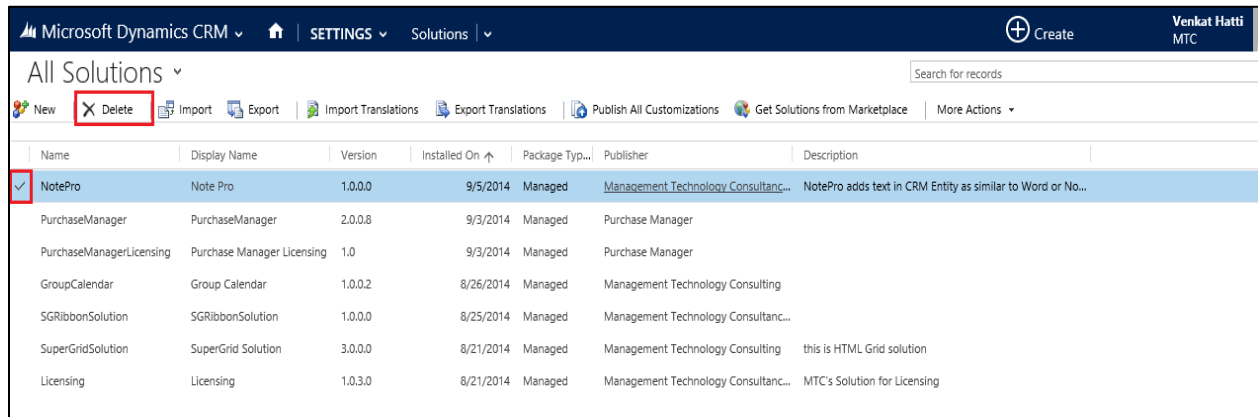


Figure 23 : Deleting NotePro Solution

- Click on **OK** to delete the solution from CRM. The solution will be deleted

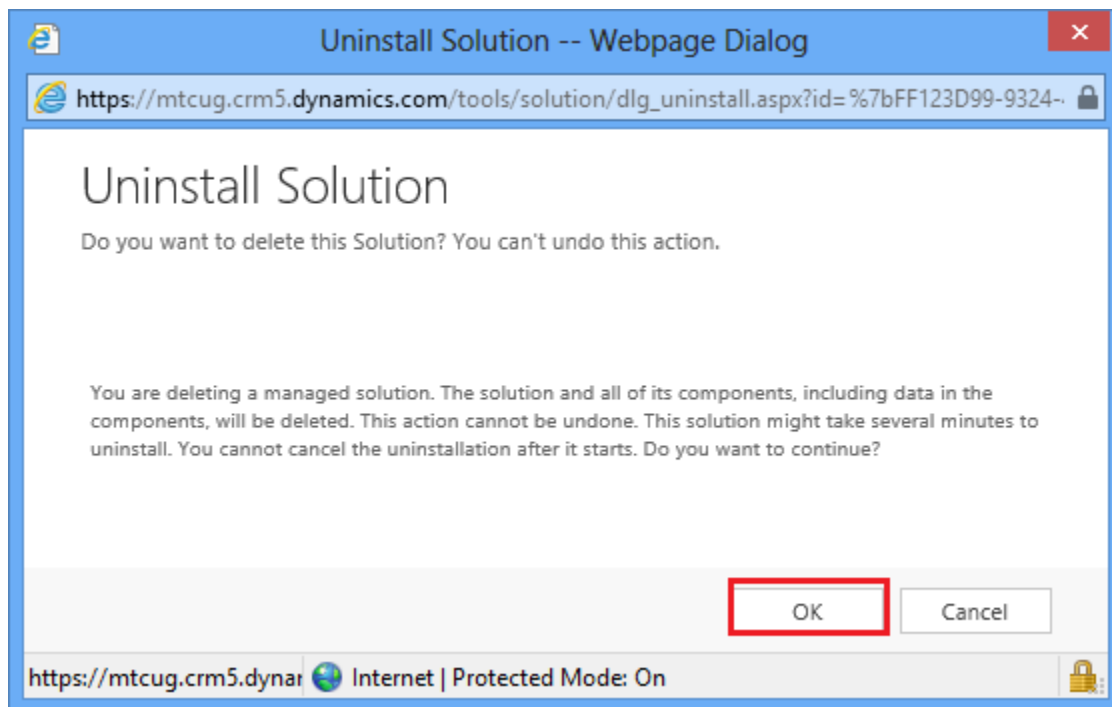


Figure 24: Solution Deleted

- Repeat the same for Licensing Solution also

## MTC Overview

MTC develops an ever growing and extensive family of add-on products, complete solutions, and core development technologies for the Dynamics 365 / CRM platform. MTC supports a product development effort with a highly efficient global Dynamics 365 / CRM exclusive services business 24/7. MTC's products represent the refinements in functionality, deliverability, and long-term maintainability of unique highly customized Dynamics 365 / CRM platform business solutions suggested as most important in MTC's global volume customization business. MTC runs its internal operations and many of its partners and affiliates with this example

### **SMB Custom Enterprise** Componentized Solutions on Dynamics xRM

Small and medium sized businesses (SMB) can now affordably build the kind of enterprise automation system that distinguishes the best unique-line-of-business enterprises on earth. MTC uniquely delivers a very-unique service of clear value to businesses globally seeking automation as a business advantage.

**SMB Custom Enterprise** is your business's exact fit for a complete low cost business-specific companywide automation solution - marketing to operations to accounting in a closed loop - built on the Microsoft Dynamics XRM platform technologies. Starting with the Dynamics 365 / CRM platform in either a monthly Online or wholly owned on premise implementation you choose from a large and growing set of packaged option functionality where you determine what non-standard additional functions you want on this solution, then add them.

For more information on the dozens of integrated products of the "SMB Custom Enterprise" solution set visit: [www.MTCCRM.com](http://www.MTCCRM.com) MTC's low-cost and fixed-rate professional services current rate schedule: [www.MTCCRM.com/MTC\\_Services.pdf](http://www.MTCCRM.com/MTC_Services.pdf).

Management Technology Consulting LLC (MTC) is dedicated exclusively to the Dynamics 365 / CRM platform and CRM web portal technologies in the business of delivering add-on products and services.



MTC is a Microsoft Independent Solution Vender working on Dynamics 365 / CRM since the introduction of the platform. MTC's product offerings include



development technologies for the Dynamics CRM platform, add-on enhancements of features and major functions to CRM, as well as



complete vertical-market Enterprise versions of Dynamics CRM serving an every growing list of industries and organization types.

MTC's services are built on a global 24/7 rapid-response and low-cost and fixed-rate ease of engagement. MTC is US headquartered company optimized for low-cost on-demand global engagement with regionalized contacts and a development facility in Hyderabad India adjacent to Microsoft's facility.

### **The Global CRM Community DynamicsExchange.com**

MTC is the founding and managing partner of the Dynamics 365 / CRM platform Community at [www.DynamicsExchange.com](http://www.DynamicsExchange.com). Dynamics Exchange is crowd-source built and dedicated to driving down the costs of implementation and enhancement of the Dynamics 365 / CRM platform with unique and innovative social networking and knowledge resource allocation processes.

Dynamics Exchange is the leading community free and open to Dynamics 365 / CRM users and professionals for support, training, knowledge, products, and services worldwide.

### **End User License Agreement (EULA)**

Important – Read Carefully. This MTC End-User License Agreement (“**Agreement**”) is a legal agreement between you (on the one hand) and Management Technology Consulting, LLC (**MTC**) and its OEM partner(s). (“**OEM**”) (On the other hand), for the CRM Managed Solution software product identified within (the “**Product**”), which includes computer software and may include printed materials, and online or electronic documentation. By installing, copying, other otherwise using this Product, you agree to be bound by the terms of this Agreement. If you, the End-User, do not agree to the terms of this Agreement, do not install or use this Product.

This license is not a sale. Title and copyrights to the Product remain with MTC and its OEM partner (s). Unauthorized copying of the data, or failure to comply with the provisions of this License Agreement, will result in automatic termination of this license and will make available to MTC and its OEM partner(s), other legal remedies.

**IN THE EVENT OF LICENSE TERMINATION, ALL MATERIALS, DATABASES, AND DOCUMENTATION MUST BE IMMEDIATELY RETURNED TO MANAGEMENT TECHNOLOGY CONSULTING LLC WITH THE ADDRESS LISTED AT THE END OF THIS AGREEMENT.**

1. End-User represents and warrants that it is authorized and empowered to enter into this Agreement. Represents and Warrants that it is authorized and empowered to grant the rights hereinafter set forth.
2. Management Technology Consulting, LLC and its OEM partner(s) hereby grants End-User a non-exclusive, non-transferable right to use the Product, subject to the use restrictions and limitations set forth in Section 5 and Section 6 below.
3. MTC shall provide End-User with one (1) machine-readable copy of the Product.
4. End-User acknowledges that the Product is confidential, proprietary material owned and copyrighted by MTC. End-User agrees that MTC and its OEM partner(s) shall retain exclusive ownership of the Product, including all literary property rights, patents, copyrights, trademarks, trade secrets, trade names, or service marks, including goodwill and that MTC may enforce such rights directly against End-User in the event the terms of this agreement are violated.
5. The Product is intended for use solely by End-User for their own internal purposes. The Product may only be used on the CRM Organizational Unit licensed and paid for by End-User to the MTC. End-User agrees not to copy, modify, sub-license, assign, transfer or resell the Product, in whole or in part. End-User agrees not to translate, reverse engineer, decompile, disassemble, or make any attempt to discover the source code of the Product (except and only to the extent applicable law prohibits such restrictions). End-User further agrees not to download/upload the Product, in whole or in part, or to establish a network, place data on the Internet, or offer a service bureau utilizing the Product. End-User agrees to restrict access to the Product to designated employees and to use its best efforts to prevent violation of these restrictions by agents, employees and others, taking such steps and reasonable security precautions as may be necessary. End-User shall permit MTC and/or its representative access to its premises during normal business hours to verify compliance with the provisions of this Agreement.



6. This license authorizes use of the Product on a single CRM Organizational Unit, which shall mean a single Organizational Unit. **CONFIDENTIALITY NOTICE** - The information contained in this document is confidential and proprietary. This document is to be used with the understanding that it will be held in strict confidence and not used for reasons unrelated directly to the specific purpose of this document. No part of the document may be circulated or reproduced for distribution outside the Client organization without prior written permission from Management Technology Consulting LLC.
7. This Agreement shall remain in force as long as the End-User using the Product is paying the applicable MTC Annual Maintenance and Support fee. Failure to pay the periodic maintenance fee shall cause this agreement to expire. MTC or End-User may terminate use of the Product and this Agreement by written notice, at least thirty (30) days prior to the termination. Within thirty (30) days after expiration or notice of termination of the Agreement, End-User shall return to MTC, postage prepaid all copies of the Product. Continued use of the Product or any information contained therein or supplied under this Agreement after termination, or expiration of this Agreement is expressly prohibited.
8. All UPDATES provided by MTC and its affiliates shall be considered part of the Product and subject to the terms and conditions of this Agreement. Additional license terms may accompany UPDATES. By installing, copying, or otherwise using any UPDATE, End-User agrees to be bound by this Agreement and any terms accompanying each such UPDATE. If End-User does not agree to the additional license terms accompanying such UPDATES, do not install, copy, or otherwise use such UPDATES.
9. End-User agrees that MTC and its affiliates may collect and use technical information End-User provide as a part of support services related to the Product.
10. End-User acknowledges that the Dynamics 365 / CRM Managed Solution "Product" is of U.S. origin and agrees to comply with all applicable international and national laws that apply to the Product, including the U.S. Export Administration Regulations, as well as end-user, end-use and destination restrictions issued by U.S. and other governments.
11. MTC REPRESENTS THAT THE PRODUCT DOES NOT VIOLATE OR INFRINGE ANY PATENT, TRADEMARK, TRADE SECRET, COPYRIGHT, OR SIMILAR RIGHT. IN THE EVENT THE PRODUCT IS HELD TO INFRINGE THE RIGHTS OF ANY THIRD PARTY, MTC SHALL HAVE THE OPTION EITHER TO PROCURE THE RIGHT FOR THE END-USER TO CONTINUE USING THE PRODUCT OR AT NODUS'S EXPENSE, TO REPLACE OR MODIFY THE PRODUCT SO THAT IT BECOMES NON-INFRINGEMENT. MTC AND ITS OEM PARTNER(S) MAKE NO OTHER WARRANTY, EXPRESS OR IMPLIED, INCLUDING, BUT NOT LIMITED TO, THE ACCURACY OF THE PRODUCT, THE MERCHANTABILITY AND FITNESS OF THE PRODUCT FOR A PARTICULAR PURPOSE. FURTHER, MTC DOES NOT WARRANT THE COMPATIBILITY OF THE PRODUCT WITH END-USER'S COMPUTER HARDWARE AND/OR SOFTWARE SYSTEM.
12. End-User's sole and exclusive remedy for any damage or loss in any way connected with the Product furnished herein, whether by breach of warranty, negligence, or any breach of any other duty, shall be, at MTC's option, replacement of the Product or return or credit of an appropriate portion of any payment made by End-User with respect to such Product. Under no circumstances shall MTC or its OEM Partner(s) be liable to End-User or any other person for any indirect, special or consequential damages of any kind, including, without limitation, damages for loss of goodwill, work stoppage, computer failure or malfunction or any and all other commercial damages or losses. Additionally, MTC assumes no liability for damages caused by incorrect parts usage and has no responsibility to verify that the parts are correct for a customer's vehicle in accordance with the manufacturers' specifications.
13. MTC may cancel this license at any time if End-User fails to comply with the terms and conditions of this Agreement; and MTC may obtain injunctive relief and may enforce any other rights and remedies to which it may be entitled in order to protect and preserve its proprietary rights.
14. This Agreement is the complete and exclusive statement of the understanding between the parties, with respect to the subject matter, superseding all prior agreements, representations, statements and proposals, oral or written.
15. No term or provision hereof shall be deemed waived and no breach excused, unless such waiver or consent shall be in writing and signed by the party claimed to have waived or consented. Any consent by any party to, or waiver of, a breach by the other, whether express or implied, shall not constitute consent to, waiver of, or excuse for any other different or subsequent breach.

**CONFIDENTIALITY NOTICE** - The information contained in this document is confidential and proprietary. This document is to be used with the understanding that it will be held in strict confidence and not used for reasons unrelated

directly to the specific purpose of this document. No part of the document may be circulated or reproduced for distribution outside the Client organization without prior written permission from Management Technology Consulting LLC

### **A. Limitation of Liability**

IN NO EVENT WILL MTC OR ITS OEM PARTNER(S) BE LIABLE FOR ANY DAMAGES, INCLUDING LOSS OF DATA, LOST PROFITS, COST OF COVER, OR OTHER SPECIAL, INCIDENTAL, CONSEQUENTIAL, OR INDIRECT DAMAGES ARISING FROM THE USE OF THE PROGRAM OR ACCOMPANYING DOCUMENTATION, HOWEVER CAUSED AND ON ANY THEORY OF LIABILITY. THIS LIMITATION WILL APPLY EVEN IF MTC HAS BEEN ADVISED OF THE POSSIBILITY OF SUCH DAMAGE. YOU ACKNOWLEDGE THAT THE LICENSE FEE REFLECTS THIS ALLOCATION OF RISK.

### **B. General**

The laws of the State of California shall govern this Agreement. This Agreement is the entire agreement between MTC and End-User concerning the Product and supersedes any other communications or advertising with respect to the program and accompanying documentation. If any provision of the Agreement is held invalid, the remainder of the Agreement shall continue in full force and effect. If you have any questions, please contact in writing: Management Technology Consulting LLC, 7738 Sky hill Drive, Los Angeles, CA 90068, and Tel: (323) 851-5008.

### **C. Warranty Disclaimer**

Management Technology Consulting LLC, Inc. disclaims any warranty regarding the product or and content or examples contained in this documentation and the Managed Solution code, including the warranties of merchantability and fitness for a particular purpose.

### **D. Limitation of Liability**

The content of this manual is furnished for informational use only, is subject to change without notice, and should not be construed as a commitment by Management Technology Consulting LLC, Inc. Management Technology Consulting LLC, Inc. assumes no responsibility or liability for any errors or inaccuracies that may appear in this manual. Neither Management Technology Consulting LLC, Inc. nor anyone else who has been involved in the creation, production or delivery of this documentation shall be liable for any indirect, incidental, special, exemplary or consequential damages, including but not limited to any loss of anticipated profit or benefits, resulting from the use of this documentation or sample code.

### **E. Annual Maintenance and Support**

Software products offered by Management Technology Consulting LLC, (MTC) include 1 year of Annual Maintenance and support. Annual maintenance includes your right to the latest versions and any updates to this product at no charge during the 1st year of ownership. Future years of Annual Maintenance must be purchased at a fee equal to 25% of the original purchase price of the product. MTC will notify owners of record by email of the Annual Maintenance renewal time and facilitate collection of fees and simultaneously assure the latest versions and updates are in use.

### **F. Customer Care details**

MTC is always open to global community of Dynamics 365 / CRM platform Software Users



**Availability and hours of operation: Monday to Friday**  
**USA PST 323-851-5008 - 8:00 AM to 6:00 PM**  
**India IST 323-863-0077 - 8:30 PM to 8:30 AM in PST**

**USA Headquarters:**  
**Management Technologies Consulting, LLC**  
**7738 Sky hill Drive, Los Angeles, CA 90068**

Request and receive support online at [www.MTCCRM.com](http://www.MTCCRM.com) Review, order, fund, track, and manage your solution needs online securely, conveniently, affordably 24/7 with MTC online. MTC is a leader in CRM customer web Portal offerings in connected Dynamics 365 / CRM enterprise solutions for social and business transactions— see solutions in action as you get what you need from MTC online on your time.