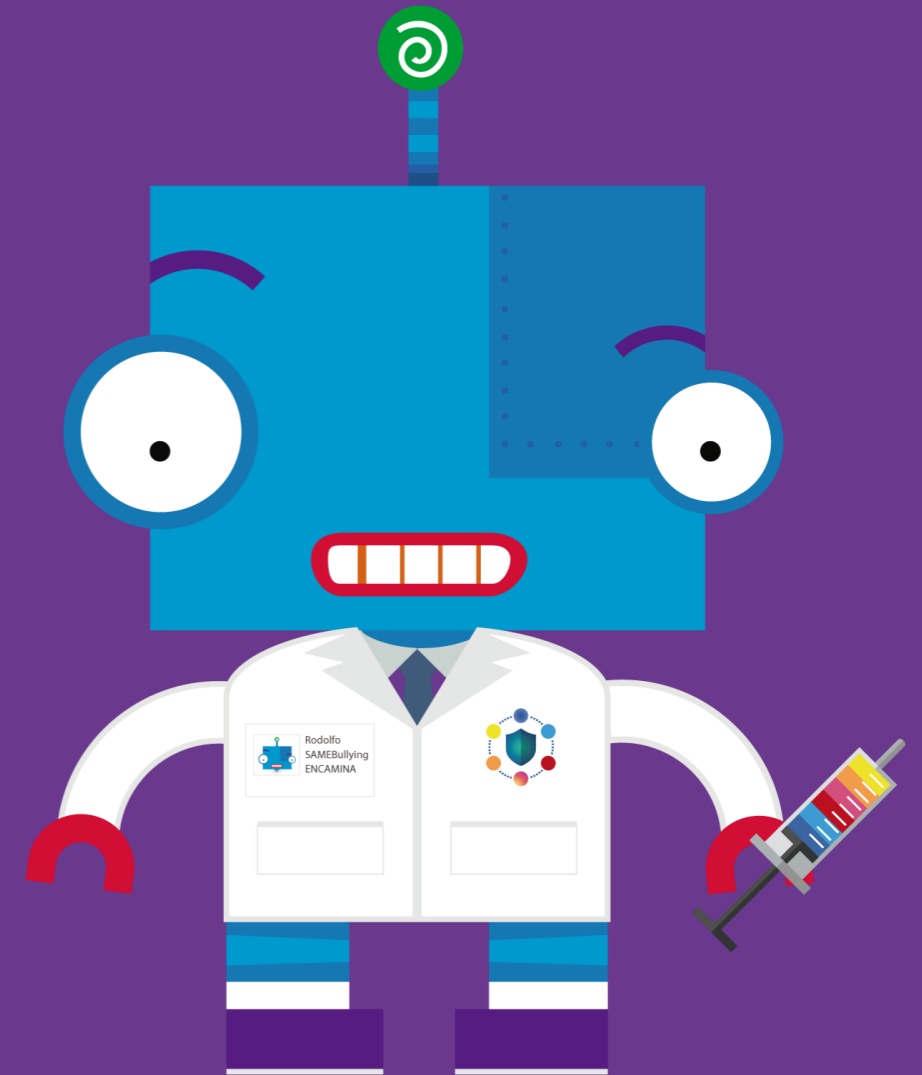




Social Application FOR
Monitoring and
Educating

Artificial intelligence on school platforms to detect, prevent and treat **bullying**

The first #digitalvaccine against school cyberbullying





Value proposition

SAMEBullying it's an Artificial Intelligence application that detects, prevents and treats cyberbullying in instant messaging among children and adolescents

SameBullying Educates, Prevents and Treats the cyverbullying

- Aided by models of Artificial Intelligence and Azure Cognitive Services, SameBullying will detect prematurely students with potential to generate school bullying.
- The system alerts and provides recommendations to parents and guardians to take action before cases go to more serious stages.
- With different levels of protection, ranging from the center and educators, the harassed and the stalker.



How it works?



Connects securely and anonymously

The connection is via API ensuring the security and anonymity of all information exchanged.



Linked to school systems

SameBullying Works in ClickEDU, Microsoft Teams or any Other system where conversations between students are produced.



Monitor behavior

The system is able to monitor the behavior of the students by offering a control panel where the center can analyze the behaviors.



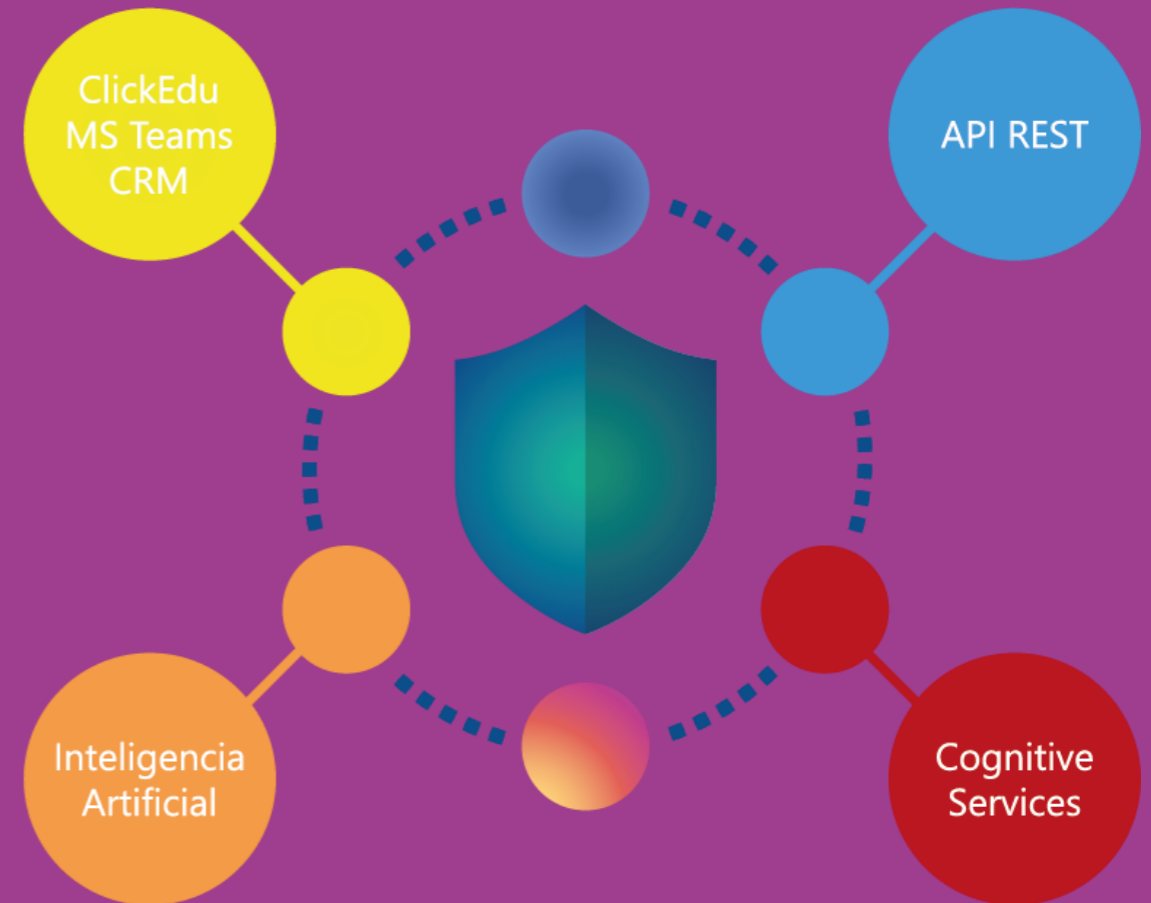
Reacts to potentially dangerous behavior

SAMEBullying uses Microsoft's Cognitive Services and Artificial Intelligence algorithms to identify not only inappropriate words and images but also the context in which they are to create alerts.



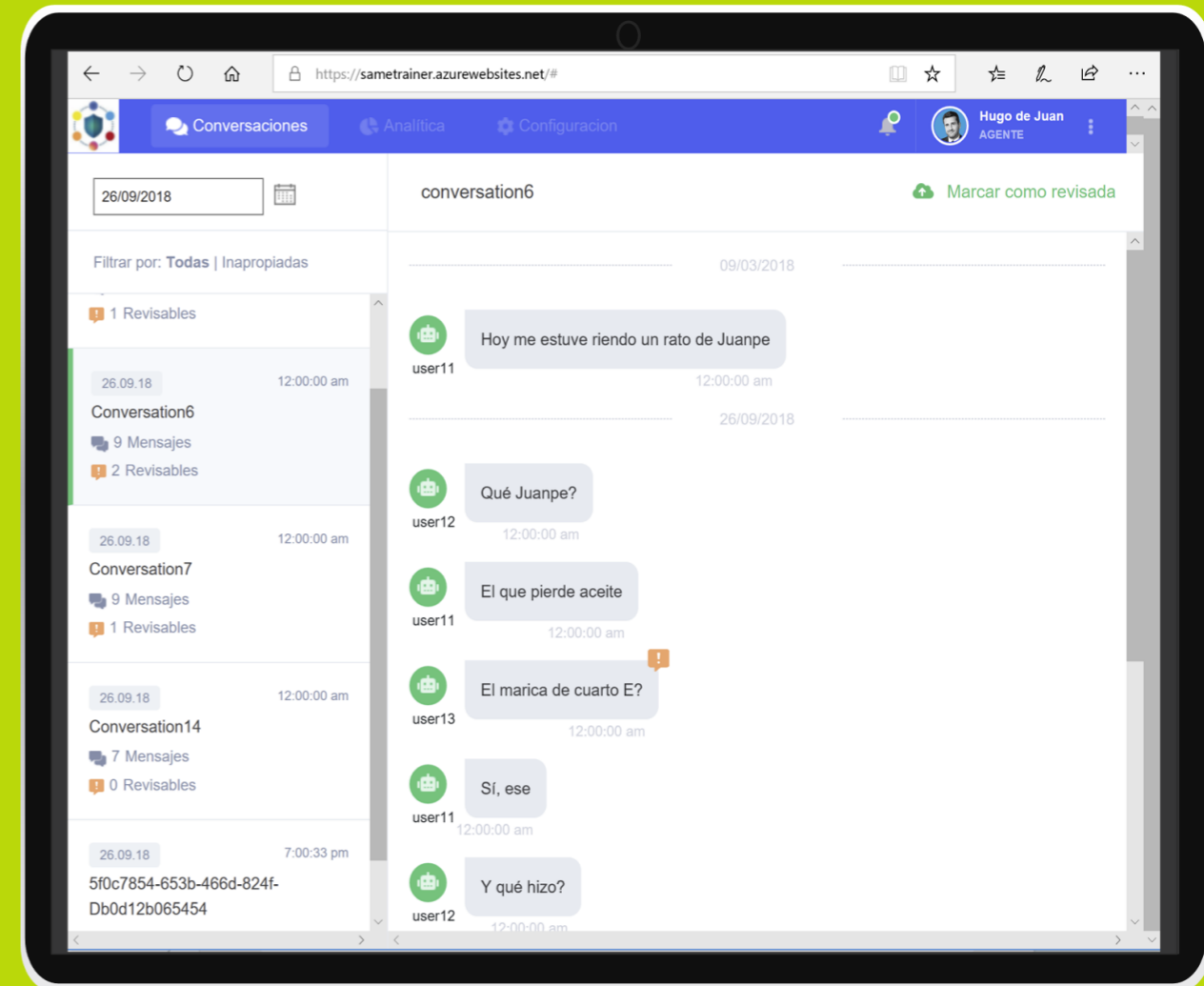
Learn progressively

Thanks to Artificial Intelligence and Azure Cognitive Services, SameBullying learns from the conversations analyzed to detect new behavior patterns.



Educator BackOffice Panel:

Reviewing marked potentially dangerous conversations



Use sample: ClickEduCRM BackOffice connected to SAMEBulling

Click María Álvarez Pérez

click edu demo-es

volver a Mensajes

Mensajería (2018-2019)

Enviar Agenda

Para:

CC:

CCO:

Asunto: Puede parecer cruel

Archivos:

Fuente: 5 (18pt) Párrafo

Ya sé que puede parecer un poco cruel, pero piensalo despacio.
Esto es imprescindible para sobrevivir en el colegio. Siempre, siempre, debe haber alguien con quien meterse:
mejor que sea alguien que no seas tú. Si es una pena que tenga que ser tú amiga, pero si no te callas iremos a por ti!

Remitente de la incidencia

Nombre	Clase	Veces
María Álvarez Pérez	4º de ESO A	4

Cerrar

click edu demo-es

Administrador del Sistema

resumen materias contenidos comunicación calendario archivos gestión web administración

volver a la mensajería

SAME LITE - Moderación de la mensajería

Parámetros de búsqueda

Fecha inicial: dd/mm/aaaa

Etapa: Infantil Primaria ESO Bachillerato

Estado: Todos los estados

Nombre del alumno:

Fecha final: dd/mm/aaaa

Ordenado por: Fecha ascendente

Buscar

Por tipo de incidencia

Moderadas 4

Seleccionar	Nombre alumno	Clase	Incidencia	Fecha	Veces	Estado	Operaciones
<input type="checkbox"/>	Josefina Villamejor Ruiz	1º de ESO B	MODERACIÓN	01-11-2017	4	Cerrado	<input type="checkbox"/> <input type="checkbox"/> <input type="checkbox"/>

Observaciones

Comentarios: Ya he hablado con Josefina y tendremos que convocar una reunión con los padres.

Guardar

Cerrar

Thanks

To locate or contact ENCAMINA you can:



Send an email to:
info@encamina.com



Visit us at:

Paseo de las Delicias, 30. 2ª planta
28045 , Madrid, Madrid

Jerónimo Roure, 49
46520 Puerto de Sagunto, Valencia



Calle del Ángel, 32
30202 Cartagena, Murcia



Call to:

Madrid - +34 917 893 823
Valencia - +34 962 698 064



Send a fax to 962 698 063



O hablar personalmente con tu
Account Manager

Find us at -      

Or download our App - MyENCAMINA



encamina