



Microsoft
Dynamics 365



DYNAMIC NETSOFT
TECHNOLOGIES

**Investment Portfolio Management
on Dynamics 365 for finance and operations**

Investment Portfolio Management on Dynamics 365 for finance and operations

Technology is rapidly reshaping the markets landscape. IPM solution, will help to stay ahead of the curve with our ongoing improvement in cutting-edge developments for this tool. Distribute a variety of periodic and relevant automation, including the latest Trending Topics, a source of thought-leadership for global Investor communities.

IPM platform provide analysis and recommendations pertaining to market structure, market allocation and partner's distribution policy seamlessly, including broader technology insights.

From the first transatlantic cable to tomorrow's breakthrough in AI technology, for decades, we've been partnering with innovators to shape tomorrow, well, better.

Why Dynamic Netsoft' s Investment Portfolio Management

IPM is a discretionary investment management tool, which means we help you to use your money to make investments on your behalf. Based on the recommendation made by (your) financial adviser, your investment will be placed in one of risk-targeted investment profiles into market.



- IPM has been designed to maximize the efficiency and output of Dynamics 365 for Finance and Operations users. Have an effective tracking of all your investment transactions, partner's borrowings/withdrawals, allocation of funds, managing portfolios, memorandum of investments, supporting multi currencies, live market status integration, dedicated documentations, risk analysis as well as various mandated by accounting standards and tax laws as such.
- Developed in-house, IPM is an intuitive, interactive tool that helps you & your investment to plan, transact, monitor and manage all your investments in one place.
- It provides a real-time picture of your financial portfolio and analyses how the portfolio value changes over time. Usage of the effective agreement to process the investment transactions through workflow (if required) automation and approvals thereby reducing the manual intervention during the investment process.
- Live integration with the General Ledger module's, flexible account structure for dimension accounting gives a comprehensive Portfolio statement of investments. The portfolio tracking tool that helps generate tailor-made reports for all your investments. It ensures that your Investment holdings are in line with your current financial goals and needs.
- IPM offers to generate comprehensive reports, including post-transaction process analysis of earnings, dividend, profit, loss etc. for the specific period.
- Weighted Average calculation of unrealized/realized value for investments is our one of the best features incorporated.
- D365 itself is full of enormous functionalities which remains unchanged while investment are safely managing within.



Investment Portfolio Management (IPM): An investment built around you

No-one understands your financial goals better than you. But enabling you to build the right investment portfolio to help you achieve them is something we – together with your financial adviser – can help with.

Portfolio Strategy

Each one features a specific blend of the foundation Funds can create a diversified portfolio. Our portfolio strategy allows you to create any strategy, for any financial institution.



Portfolio management

Intuitive investing means having the ability to maintain investments without over complication, in a logical and sensible manner. The robust nature of our process has resulted in a range of data that are designed to achieve different analysis for given levels of risk. Quite simply, the system is designed to reach a conclusion when you need it most from our IPM.



Investment Memorandum

Dynamic Netsoft's IPM is available exclusively through approval from your financial advisers, a memorandum of agreement. Your financial adviser can define the prices and quantity to determine the most appropriate/ profitable investment profile to meet your portfolio goals.



Document management

Legal document, risk analysis document, any statutory document, survey document (property) are valuable repository and (sometimes) mandate for Investment. IPM allows to keep track digitally of each document you want and the way you want for your portfolio, memorandum, risk evaluation, investment transaction, KPIs.



Risk management

All of us face different risks every day. We want to make sure our IPM understand and you feel comfortable with the key risks associated with Portfolio before making any decisions.

Our seamless integrated platform allows you to create Meeting, appointment, phone calls, any possible activity for risk assessment. You can track cost for each activity within our single platform.



Investment market price revaluation

Investment markets can be volatile and, as the value of markets goes up and down, the value of your Portfolio will change too. It is therefore important to us to maintain financial impact for your fund's volatility of any investment profile. Investment market price revaluation is a unique functionality which may maintain your investment's health as and when you wish to do. Our API is equipped to integrate with any market to show you a 'live' status and simultaneously (unrealized) gain/loss.



Stock in Hand - Costing

We Dynamic Netsoft - IPM providing you (probably) the most accurate accounting method prescribed by 'Best Practice' across industry and/or accounting GAAP.

We revalue your (unsold) investments during end of each month. Our robust costing method gives you the financial figure for the stock-in-hand.



Invest across the globe with multiple currencies

For most investors, assembling (and managing) a well-diversified investment portfolio can be a complicated task. Not only are there thousands of funds to choose from, but selecting the right funds, across the globe is a challenging proposition. Customer focused Return on Investment mitigation is a biggest challenge. Finding value for invested money and building an investment portfolio with multiple currency of reaching your investment goals, will be quick and easy with our IPM solution. You are free to choose any transactional currencies under even single portfolio. We are giving you a global wing to your investment business.



Investment partner

Multi investor is a concept that may invest in any portfolio, run by your fund managers. The aim of this multiple investor or investment partner is capable of generating consistent levels of fund while staying within acceptable risk boundaries identified in memorandum/ risk management. Our IPM solution is offering you a platform for multiple customer of any portfolio. Investor can push money into portfolio, may withdraw also based on your fund manager's decisioning parameters. Your business are able to allocate profit, dividends (may be loss) to your investment partners at any point of time.



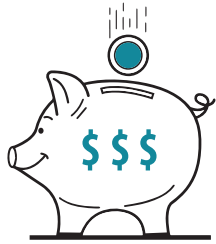
Reporting / Analytics

Being flexible it is obvious that the output on your screen for the investments are matter to us. The graphical/analytical reports give you confidence to share the status time to time with your customer, financial advisor. Reports based on Portfolio, investment transactions, investment partners are the most remarkable reports we have developed ready so far for your business.

The existing reports offering from system is not enough, our IPM offers you the most relevant requirement to generate new report, analytical dashboard also.

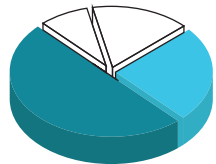


FEATURES



Nature of Investments

All investments are different by its nature. Any portfolio created in IPM will have a direct / indirect relation with its nature. A significant variety of investments has been incorporated with in this system as when it will be required to select, will be available by default.



Investment Sector

Investors are free to invest on different sectors. And each sector can be used multiple time to differentiate as sub-sector within IPM. Our devastated module is enabled to identify and keep track of different segment. 99% of the sectors are already available, in use, users are free to create based on industry need (if required).



Market details

A dedicated API, integration framework to be sync with parent market. All investment are mandatorily tagged with the market to have live status atleast from one market, any point of time.



Investment transaction

Portfolio and Memorandum consolidating on Investment form. All the details will have get sync with D365 architecture during posting. Accounting method ensure this bridging. In IPM we have predefined accounting methods which are the most logical too. During posting these methods will ensure designated accounting impact.



Enquiries

Without generating report(s) an enquiry can be helpful for health-checkup anytime, for any investment.



Periodic activities

Investment market price sync. on the existing investments, across industry types.

Dedicated engine for financial closing to the investment transactions. Perfect accounting.

Revaluation of Unsold investments. Completely user defined date control for this activity.



Dynamic Netsoft Technologies Pvt Ltd,
No: 10, 2nd Street, RB Colony, Thiruvanmiyur, Chennai, Tamil Nadu, India- 600041.

+91 44 4923 7777 sales@dnetsoft.com sales@dnetsoft.com

Follow us on:   