



WORKTREK

.....

Asset, Work and Maintenance Management System

JOŠKO IVANKOV

LUKA KOLEGA

What is WorkTrek ?



ASSET MANAGEMENT

Asset monitoring throughout the entire life cycle



FIELD WORK MANAGEMENT

Work order monitoring from planning to realization



MAINTENANCE MANAGEMENT

Planning and monitoring of work related to assets maintenance



MODERN INTERFACE

User friendly interface and mobile applications for fieldworkers

FEATURES

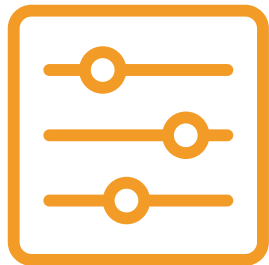
List of modules



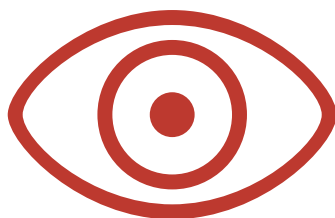
ASSET MANAGEMENT



WORK MANAGEMENT



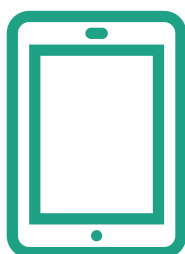
SERVICE CATALOG



PREVENTIVE MAINTENANCE



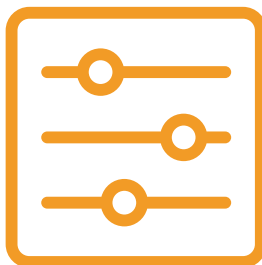
REPORTS AND KPI



MOBILE APPLICATION



CONTRACT MANAGEMENT



INVENTORY MANAGEMENT

ASSET MANAGEMENT

Facilities, equipment, tools...

01

INFORMATION

Descriptions, locations, images, documents, hierarchy, warranties, barcode

02

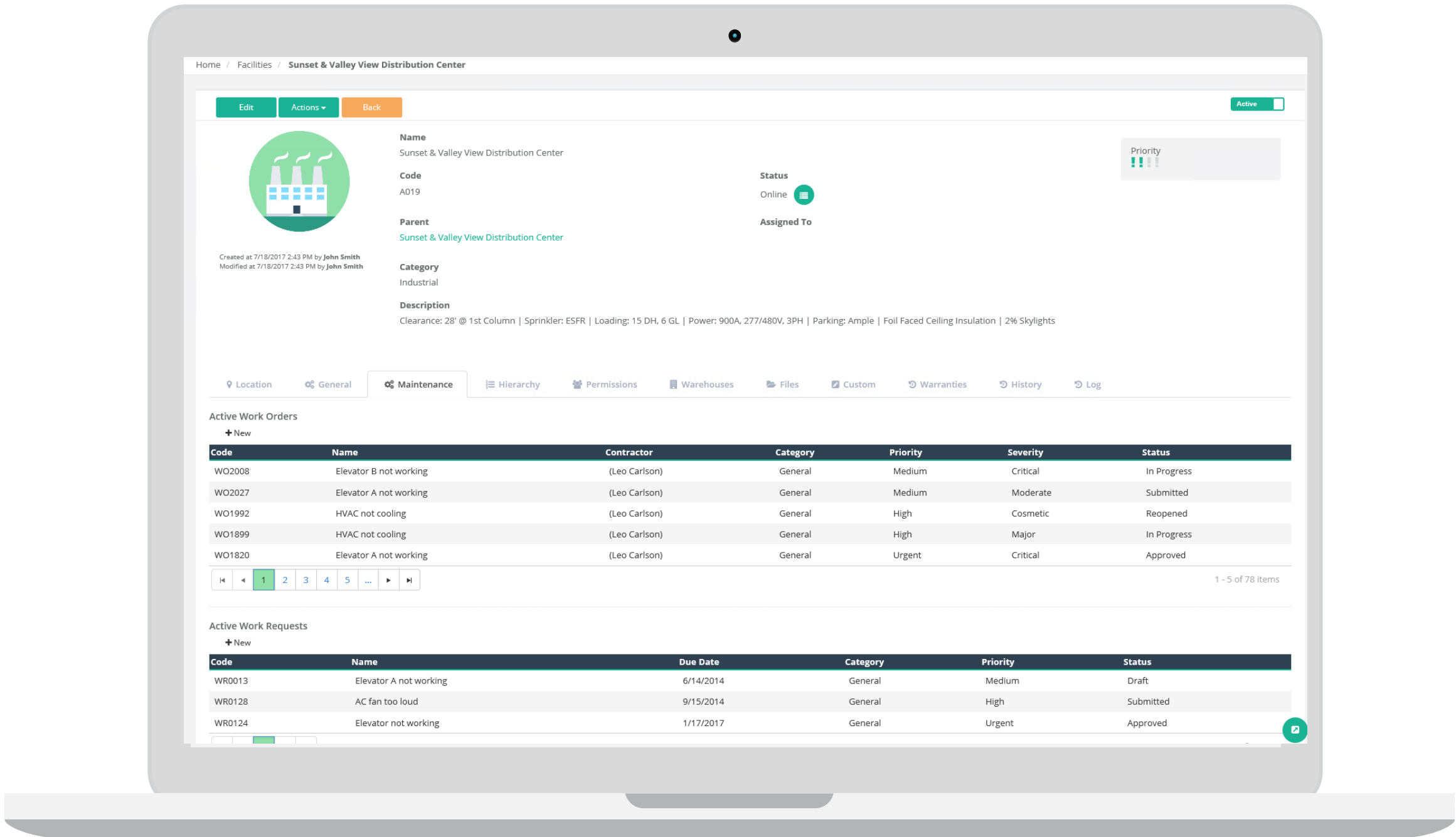
OPERATIONS

Assignments and release of tools/equipment, reservations, control counts, maintenance activities

03

HISTORY

Work and maintenance history and status monitoring



WORK MANAGEMENT

Work orders, work requests, projects...

01

MONITORING

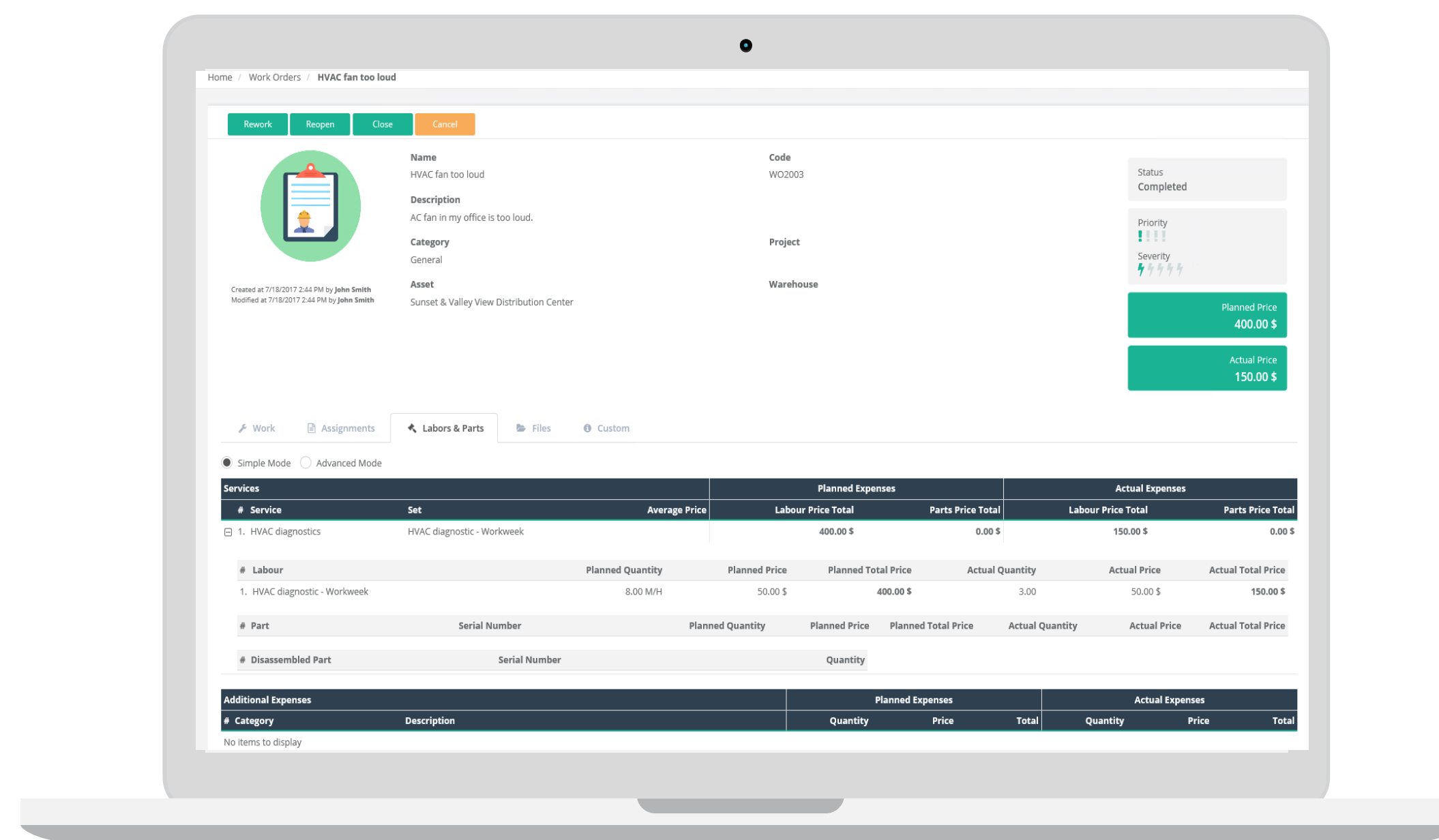
Services (labors, parts & additional expenses)

Forms and check lists,
files, schema, instructions

02

COMPARISON

Planned vs Actual expenses,
hours and parts consumption



03

PHASES

Planning -> Approving ->

Execution -> Supervision and
closing

04

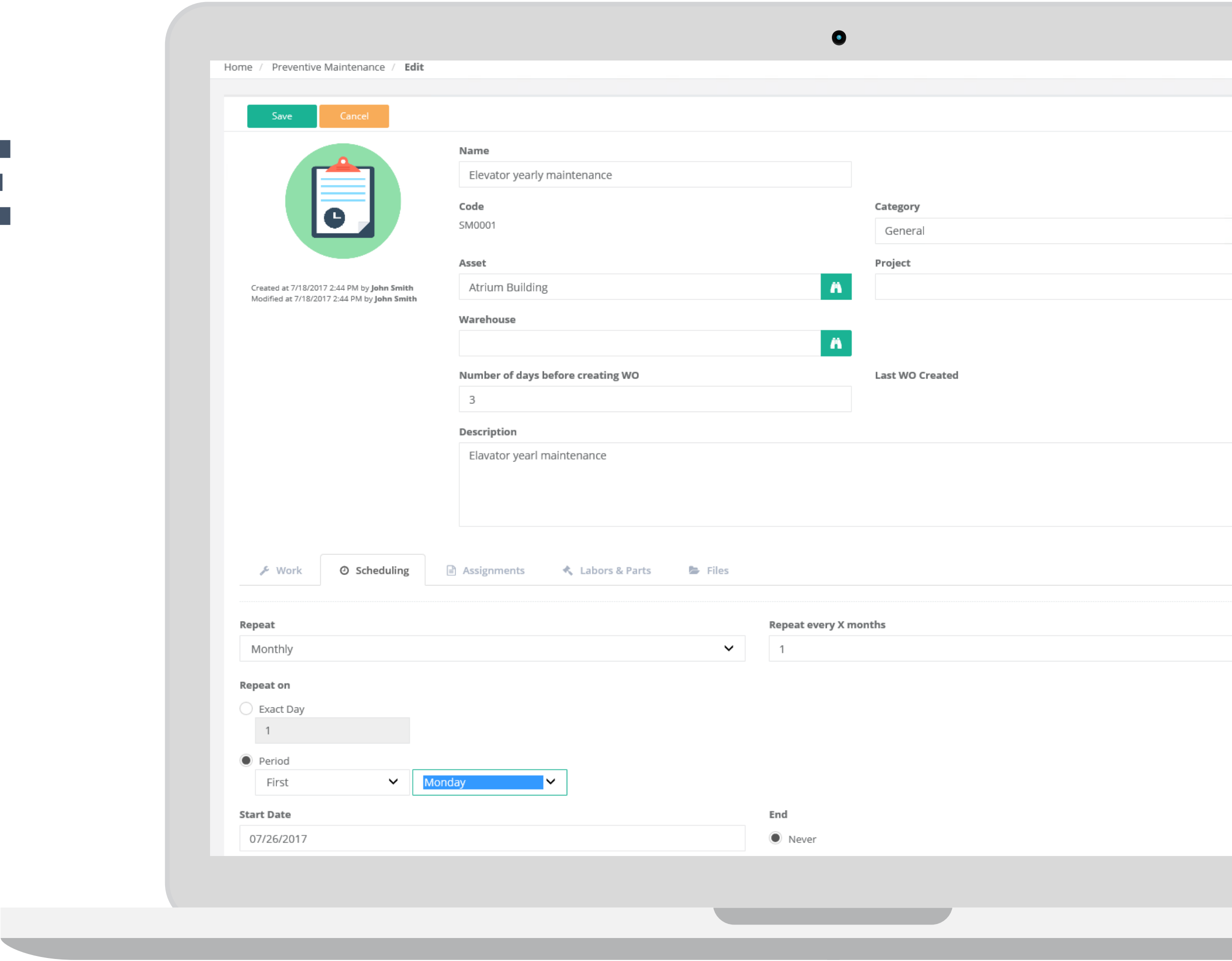
ADAPTABILITY

Different processes
depending on the need of the
organization

PREVENTIVE MAINTENANCE

Automatic creation of work orders

- TIME-DEFINED
- DEFINED EVENTS
- PREDICTIVE



CONTRACTS MANAGEMENT

Contracts, subcontractors...

01

CONTRACTS

Defining service providers, including services and assets, amounts, start date and end date

02

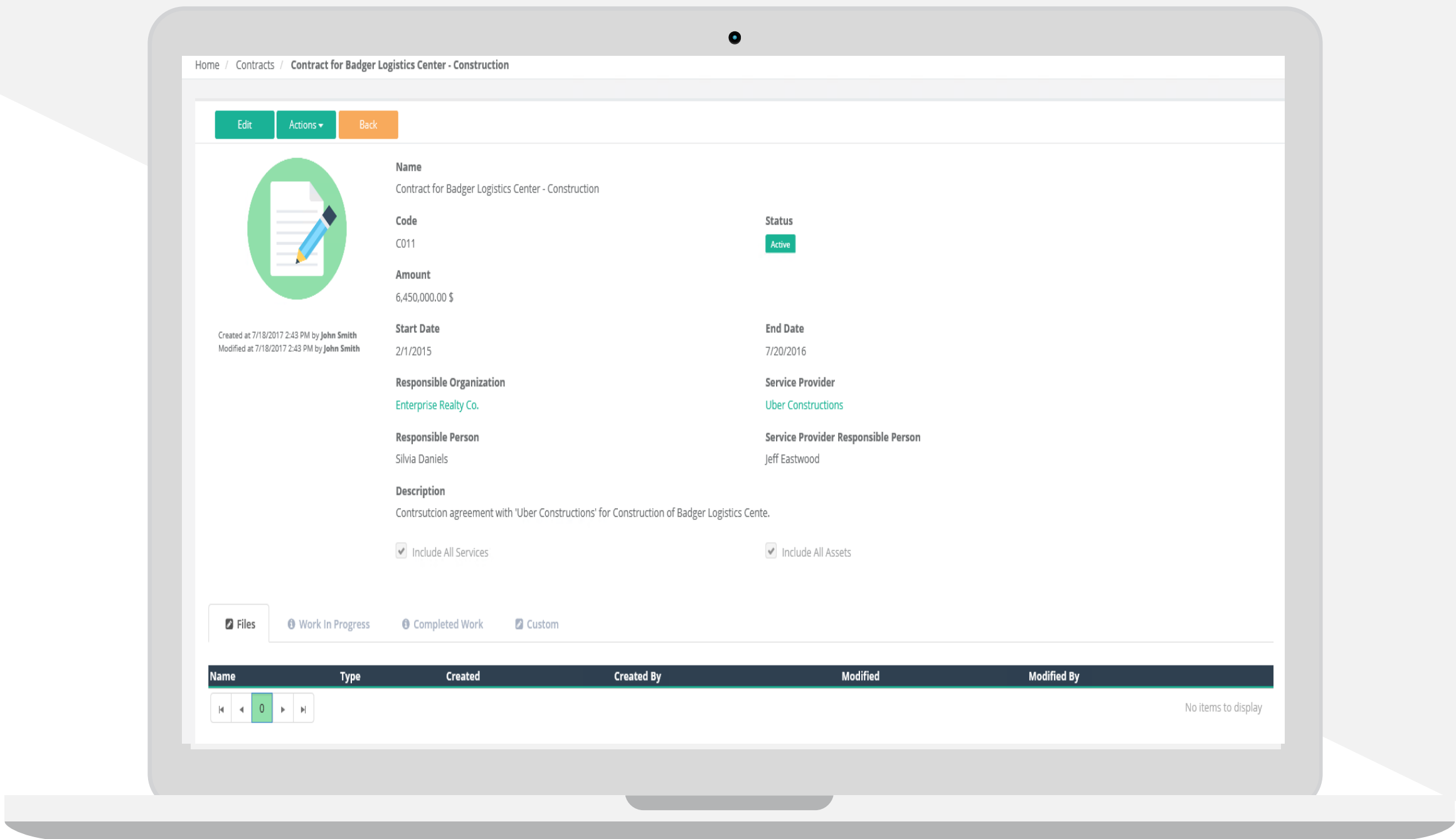
MONITORING

Real-time monitoring of contracts execution

03

SUBCONTRACTORS

Defining services and assets over which subcontractors can perform work



INVENTORY MANAGEMENT

Stock monitoring

QUANTITY



PRICE



LOCATION



Stock List

ListGrid

New

Code	Name	Warehouse	Quantity	Measure Unit	Price	Amount
P0009	1 AWG, Type MTW/UL1284 Wire, 836 Strand	Cascade Building Warehouse	16.00	g	8.50 \$	136.00 \$
P0009	1 AWG, Type MTW/UL1284 Wire, 836 Strand	Badger Logistics Center Warehouse	48.00	g	8.50 \$	408.00 \$
P0009	1 AWG, Type MTW/UL1284 Wire, 836 Strand	Business Park Technology Center Warehouse	24.00	g	8.50 \$	204.00 \$
P0009	1 AWG, Type MTW/UL1284 Wire, 836 Strand	Sunset & Valley View Warehouse	47.00	g	8.50 \$	399.50 \$
P0009	1 AWG, Type MTW/UL1284 Wire, 836 Strand	Commerce Center - Building 2 Warehouse	29.00	g	8.50 \$	246.50 \$
P0008	1/0 Type MTW/UL1284 Wire, 1045 Strand	Sunset & Valley View Warehouse	26.00	m	6.50 \$	169.00 \$
P0008	1/0 Type MTW/UL1284 Wire, 1045 Strand	Business Park Technology Center Warehouse	51.00	m	6.50 \$	331.50 \$
P0008	1/0 Type MTW/UL1284 Wire, 1045 Strand	Badger Logistics Center Warehouse	56.00	m	6.50 \$	364.00 \$
P0008	1/0 Type MTW/UL1284 Wire, 1045 Strand	Cascade Building Warehouse	34.00	m	6.50 \$	221.00 \$
P0008	1/0 Type MTW/UL1284 Wire, 1045 Strand	Commerce Center - Building 2 Warehouse	66.00	m	6.50 \$	429.00 \$
P0011	3/0 Type MTW/UL1284 Wire, 1672 Strand	Sunset & Valley View Warehouse	38.00	m	12.00 \$	456.00 \$
P0011	3/0 Type MTW/UL1284 Wire, 1672 Strand	Business Park Technology Center Warehouse	12.00	m	12.00 \$	144.00 \$
P0011	3/0 Type MTW/UL1284 Wire, 1672 Strand	Badger Logistics Center Warehouse	60.00	m	12.00 \$	720.00 \$
P0011	3/0 Type MTW/UL1284 Wire, 1672 Strand	Cascade Building Warehouse	36.00	m	12.00 \$	432.00 \$
P0011	3/0 Type MTW/UL1284 Wire, 1672 Strand	Commerce Center - Building 2 Warehouse	76.00	m	12.00 \$	912.00 \$
P0010	500 MCM, Type MTW/UL1284 Wire, 5054 Strandd	Business Park Technology Center Warehouse	68.00	m	33.20 \$	2,257.60 \$

Stock Details

Name

1 AWG, Type MTW/UL1284 Wire, 836 Strand

Code

P0009

Quantity

16.00

Price

8.50 \$

Make

GE

UNSPSC

Is Single

☐

Warehouse

Cascade Building Warehouse

Row

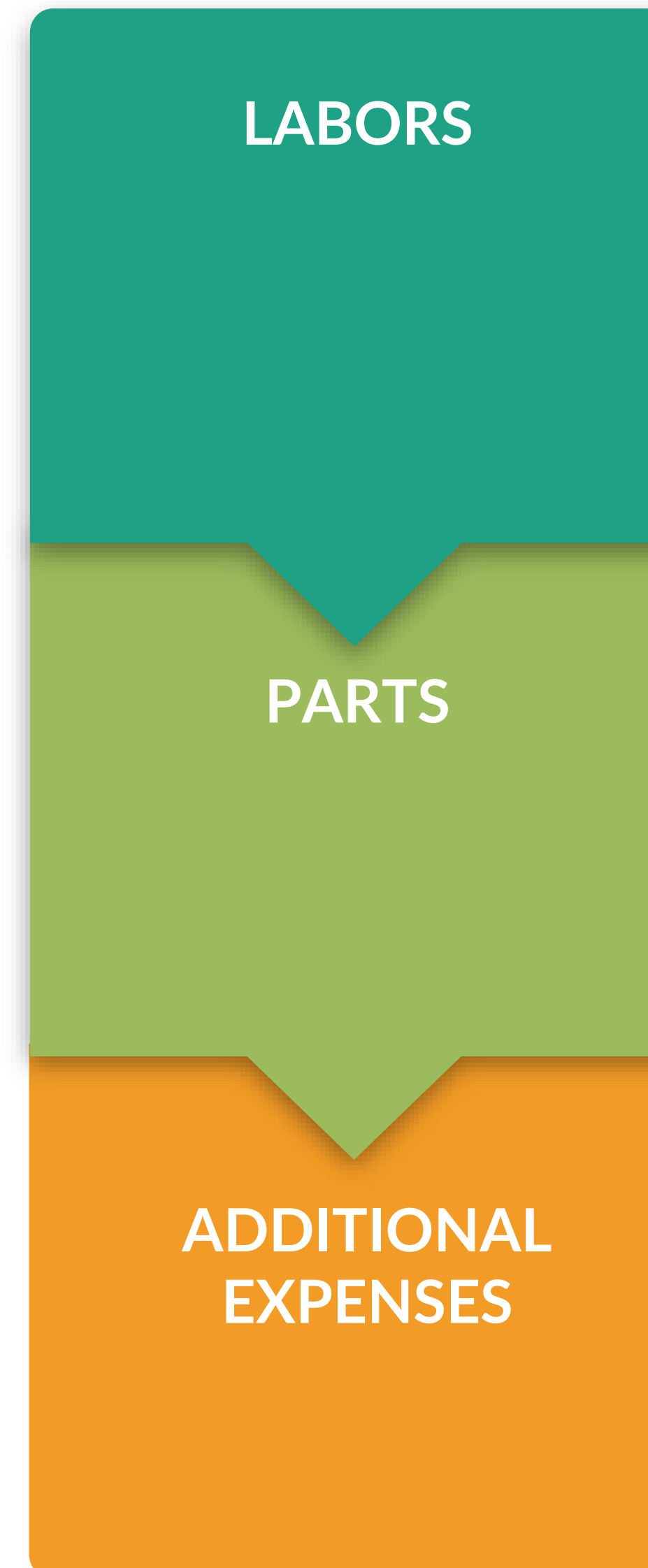
Description

SERVICE CATALOG

Monitoring of all services provided or consumed by the company.

Possibility of defining different norms for the same service.

Comparison of costs and quality of performed works between internal resources and subcontractors.



REPORTS

Reports and KPI indicators

01

REPORTS

Insight into organization performance

30+ reports

Helping making the right business decision.

02

SHARING

Export reports in PDF and Excel

Enterprise Realty Co. Silvia Daniels na 19.9.2018.

Radni nalozi - Planirano vs Stvarno
Datum stvaranja RN u razdoblju: 1.1.2018. - 19.9.2018.

Lista radnih naloga prema troškovima - planirani vs stvarni

Šifra	Naziv	Kategorija	Status		Troškovi dijelova	Troškovi rada	Dodatni troškovi	Ukupni troškovi	Razlika
WO2475	Test Dokumenti	General	Completed	Plan	2.746,00 kn	1.200,00 kn	0,00 kn	3.946,00 kn	4.244,00 kn
				Stvarno	5.940,00 kn	750,00 kn	1.500,00 kn	8.190,00 kn	
WO2336	Warehouse test 001 - Luka	General	Completed	Plan	230,00 kn	400,00 kn	0,00 kn	630,00 kn	0,00 kn
				Stvarno	230,00 kn	400,00 kn	0,00 kn	630,00 kn	
WO2085	New WO Josko 4	General	Closed	Plan	924,00 kn	1.600,00 kn	500,00 kn	3.024,00 kn	-238,00 kn
				Stvarno	786,00 kn	1.800,00 kn	200,00 kn	2.786,00 kn	
WO2242	Josko WO 2	General	Closed	Plan	924,00 kn	1.280,00 kn	200,00 kn	2.404,00 kn	-1.388,00 kn
				Stvarno	756,00 kn	160,00 kn	100,00 kn	1.016,00 kn	
WO2079	Novi WO Josko 1	General	Completed	Plan	925,20 kn	1.280,00 kn	0,00 kn	2.205,20 kn	-2.205,20 kn
				Stvarno	0,00 kn	0,00 kn	0,00 kn	0,00 kn	

03

KPI INDICATORS

Real-time insights

20+ KPIs (norm CSN EN 15341)

04

PERMISSIONS

Information is displayed based on the role and permissions of users in the system.

Mobile application

For fieldworkers



PLATFORM

Android and iOS



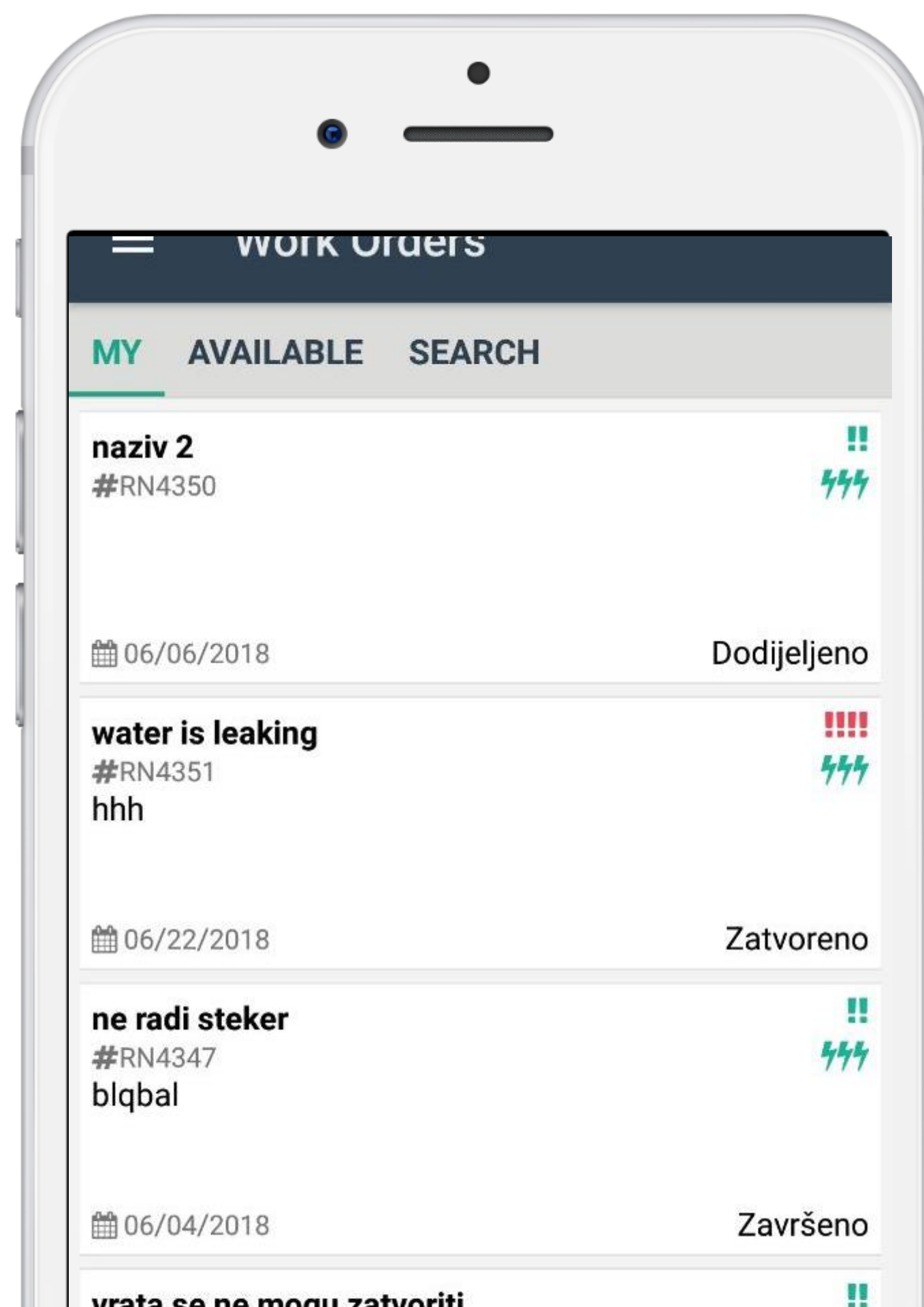
FEATURES

Work orders and requests, forms and check lists, assignments and release of assets, control counts



BARCODE

Using mobile phone camera or embedded barcode reader



OFFLINE

Offline mode



SEARCH

Assets, work orders and requests search



INFORMATION

Information, descriptions, documentation and history of activities and work available for fieldworkers



Occupational Health & Safety

Increased safety at work

12

HAZARDS

Inform and remind fieldworkers of possible hazards and environmental protection

PROTECTIVE EQUIPMENT

Inform and remind fieldworkers of mandatory personal protective equipment

LOCKOUT

TAGOUT

Steps and instructions for lockout-tagout and tracking of lockout-tagout activity

CHECKLIST

FORMS

Create and assign checklists/forms to services and work orders to perform inspections

Additional features and services



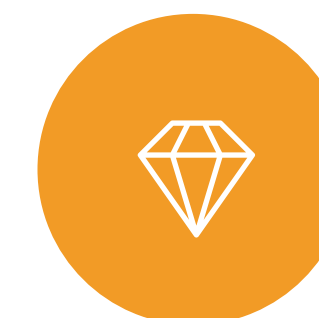
SEARCH

Search of all information in the system



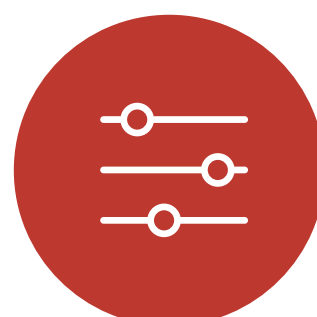
SUBCONTRACTORS

Inclusion and control of subcontractors



INTEGRATION

API integration with other system



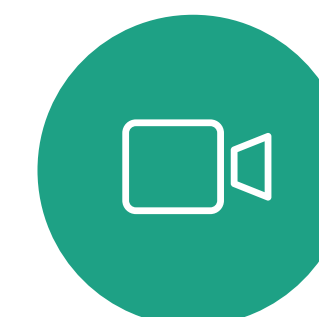
BRENDED MOBILE APPLICATION

A custom mobile application for submitting requests



CONSULTING

Consulting during implementation



EDUCATION AND TRAINING

Onsite/Offsite education and training

Use cases

Use cases in different industries



Asset maintenance

Facilities, buildings,
vehicles, machinery, tools
and equipment



Work monitoring

Planning and monitoring
of work execution, mobile
application for
fieldworkers



Tracking tools and equipment

Assignments/release,
reservation, control count,
barcoding

Benefits and savings

BENEFIT**01****SUPERVISION**

Supervision and work monitoring

BENEFIT**02****KNOWLEDGE BASE**

Work history and knowledge base,
available always and everywhere

BENEFIT**03****LESS PAPERWORK**

Electronic work order and other
documentation

BENEFIT**04****INCREASED PRODUCTIVITY**

Information availability, monitor
fieldworkers availability

BENEFIT**05****LOWER NUMBER OF
INTERVENTIONS**

More closure of work orders at a
first arrival

BENEFIT**06****SATISFIED CUSTOMERS**

Involving customers and increasing
transparency means higher revenue

Why cloud solution?

Benefits of solution in cloud

01

SIMPLICITY

No installation– just Internet browser
No additional hardware and software is required



02

PRICE

Lower entry costs, pay as you use
Possibility of trial period



03

ADAPTABILITY

Selection between different packages
Possibility of increasing/decreasing the number of
users



04

INTERGRATION

The ability to integrate with other cloud and on-
premise solutions



Contact

