

elevateAD[®]

Active Directory Integration

Microsoft
Dynamics

elevateHR[®]



Active Directory Integration

- Leverage your investment in Microsoft Dynamics for managing Active Directory
- Improve the effectiveness of your Microsoft Dynamics users
- Increase the efficiency of your HR, AP, and AR operations and transaction processing
- Go to www.elevate-hr.com for information on all Elevate HR[®] modules

Microsoft
Partner



Gold Enterprise Resource Planning

Cloud Solution Provider

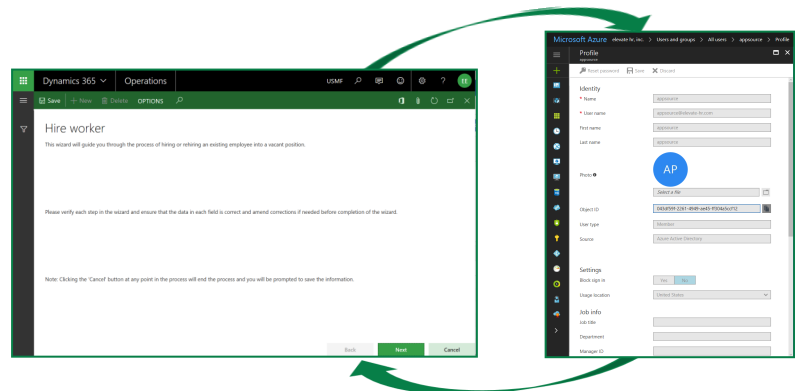
Microsoft
Dynamics 365

Certified

elevateHR[®]
Taking Talent to the Top
www.elevate-hr.com

elevateAD[®] integrates with Microsoft Dynamics 365 or Dynamics AX 2012 to automate your Active Directory account management

Elevate HR[®] Active Directory Integration (elevateAD[®]) automates the process of managing system access for your entire organization and Global Address Book. The employee lifecycle extends well beyond the actions of “hire” and “retire.” Vendors require more than a new record in your General Ledger. You need to provide new employees with appropriate access to your company’s network, computer systems, and communications resources. Upon termination, you need to ensure that employees have their access disabled. Vendors need tightly controlled network access on an as-needed basis. Microsoft’s Active Directory (AD) manages system access for your entire organization; Elevate HR’s Active Directory Integration (elevateAD) automates the process.



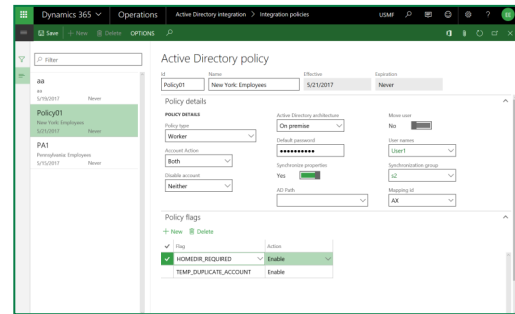
elevateAD installs and operates independently of other Elevate HR modules, and is compatible with Azure, on premise, and hybrid Active Directories.

Elevate HR for D365 and AX 2012 allows you to manage AD accounts for customers, suppliers, contacts – any person with a record in your Dynamics 365 or AX 2012 platform.

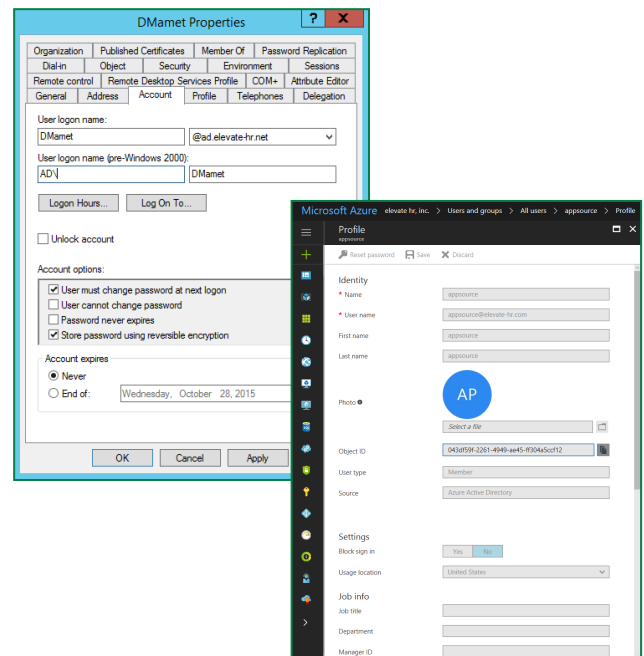
Coming soon! Elevate HR for D365 delivers the same powerful integration to Microsoft’s new Dynamics 365 for Talent!

Features

- Automate access to (and deactivation from) all systems, enterprise-wide
- Cross-functional application: create AD accounts for Vendors, Customers, Contacts and all Global Address Book records
- Double your processing power through Elevate HR's exclusive Wizard technology to initiate HR onboarding and termination processes, *OR* use elevateAD as a standalone tool
- Ensure you always have a current reporting structure in AD by syncing your D365 position-based hierarchy
- Configure 2-way synchronization between Dynamics 365 and Azure or on-prem Active Directory for bidirectional flow of information
- Enable AD account options such as Kerberos DES encryption types, smart card interactive logs, sensitive accounts, etc.
- Set up rule-based usernames for D365 and AD (e.g. [First Initial][.][Last Name])
- Design policy rules to fine tune the management of AD accounts, including OU groupings and required actions



Rich policy framework allows you to generate rules for AD account creation, to manage groups of accounts by parameters with Dynamics 365 and rules generated by Active Directory



Integrate to on-prem Active Directory as well as to Azure Active Directory

For more information about our products and services, visit www.elevate-hr.com

Email: info@elevate-hr.com
 Phone: +1 973-917-3230
 +1 877-968-4440