



## **Workflow Scheduler Installation Guide**

---

**Document Version History**

#	Date	Author	Reason	Version
1	30/03/17	Pragmasys	Initial Version	0.1

---

## Table of Contents

<b>1. Workflow Scheduler .....</b>	<b>4</b>
1.1 Introduction.....	4
<b>2. Workflow Scheduler Installation .....</b>	<b>4</b>
2.1 Steps to Configure Workflow scheduler on CRM:.....	4
2.2 Steps to Install Workflow scheduler in on premise environment: .....	6
2.3 Steps to Configure Workflow scheduler on Azure Portal: .....	12

## 1. Workflow Scheduler

### 1.1 Introduction

**Workflow Scheduler** executes continuous processes automatically by helping in saving time required for executing those processes on periodic basis.

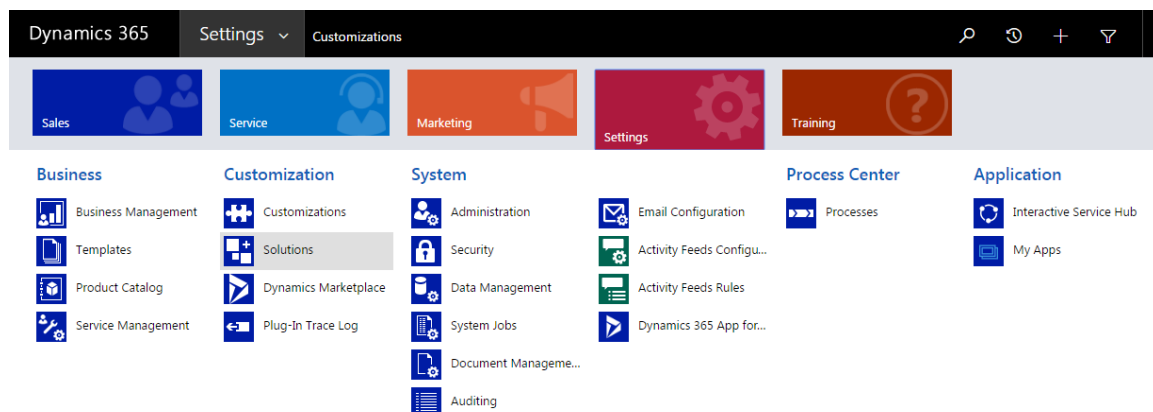
**Pragmasys's Workflow Scheduler** provides the ability to schedule workflows on the following basis:

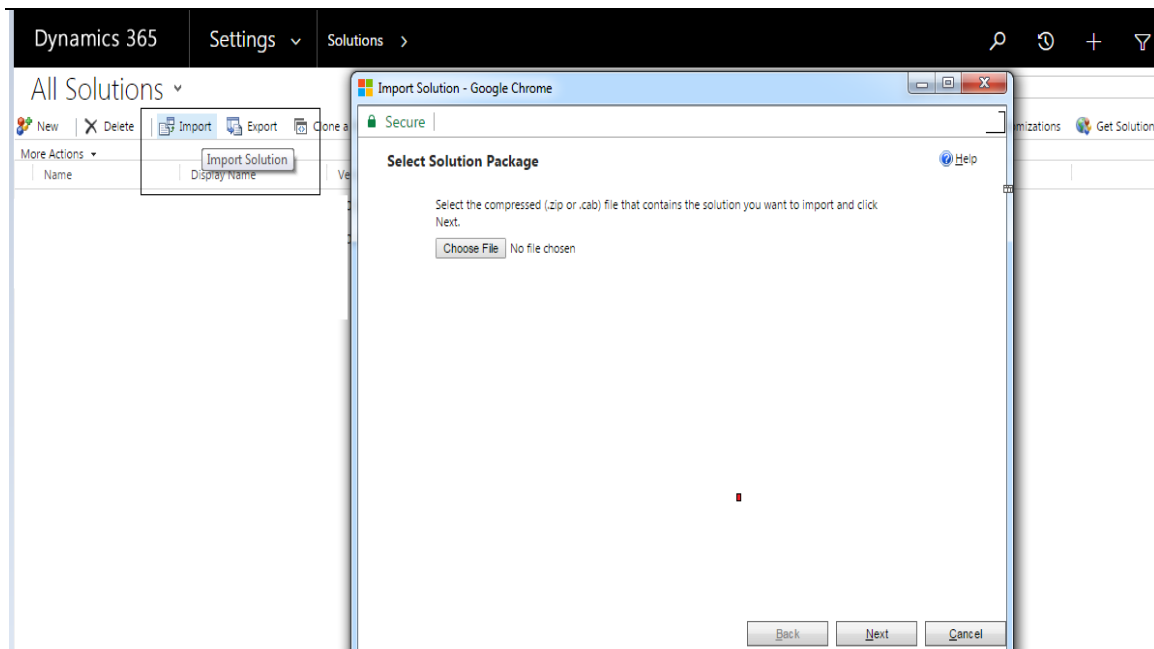
- Daily
- Weekly
- Monthly
- Specific Day of the Week
- Once a Week/ Month
- After Specific Time Interval

## 2. Workflow Scheduler Installation



### 2.1 Steps to Configure Workflow scheduler on CRM:

1. Login into MS CRM using the System Administrator/Customizer role.
2. Navigate to Customizations>Solutions>Import the solutions.
3. Import the solution named "pragmalicensing\_1\_0\_0\_0\_managed" and "PragmaWorkflowScheduler\_1\_0\_0\_0\_managed" .
4. Close the window once the solution installed successfully.





- Browse and import the below solutions.

Name	
	pragmalicensing_1_0_0_0_managed
	PragmaWorkflowScheduler_1_0_0_0_man...

- Check under the solutions once import done successfully.

Dynamics 365
Settings
Solutions

## All Solutions ▾


New
Delete
Import
Export
Clone a Patch
Clone Solution
Apply Solution Upgrade
Import Trans

More Actions ▾

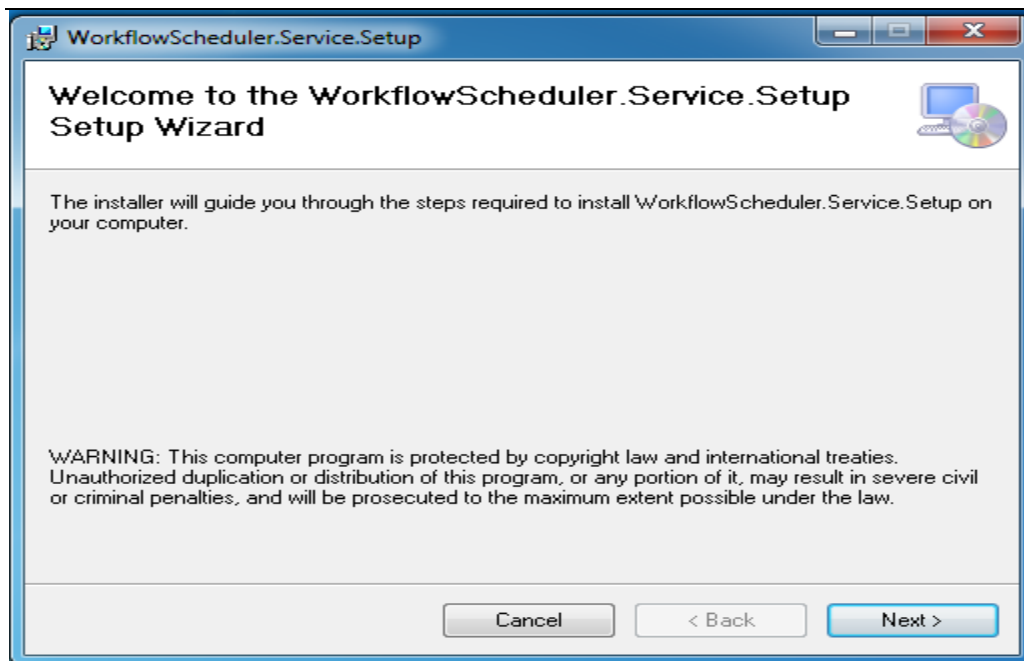
Name	Display Name	Version	Installed On ↓	Package Typ...	Publisher
pragmalicensing	Pragma Licensing	1.0.0.0	3/31/2017	Unmanaged	pragmapublisher
PragmaWorkflowScheduler	Pragma Workflow Scheduler	1.0.0.0	3/22/2017	Unmanaged	pragmapublisher

## 2.2 Steps to Install Workflow scheduler in on premise environment:

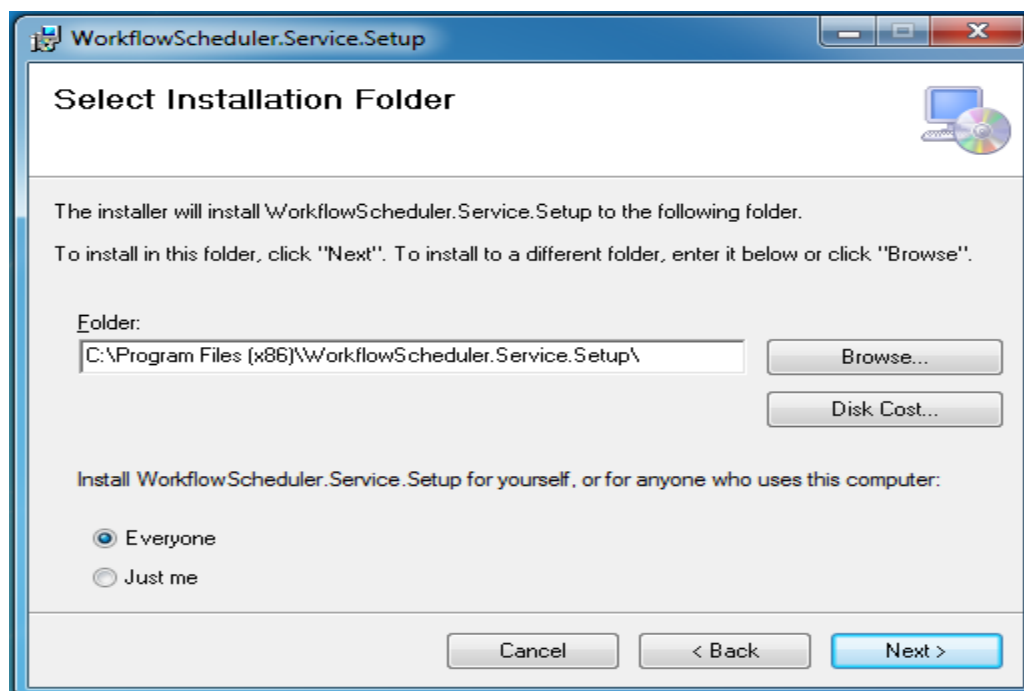
In order to install the workflow stall Workflow Scheduler on your computer, double click on WorkflowScheduler.Service.Setup.msi setup file.It will run the application and install the utility on your PC creating 'WorkflowScheduler.Service.Setup' folder and WorkflowScheduler.Service service.

 WorkflowScheduler.Service.Setup	30-03-2017 12:01	Windows Installer P...	872 KB
---	------------------	------------------------	--------

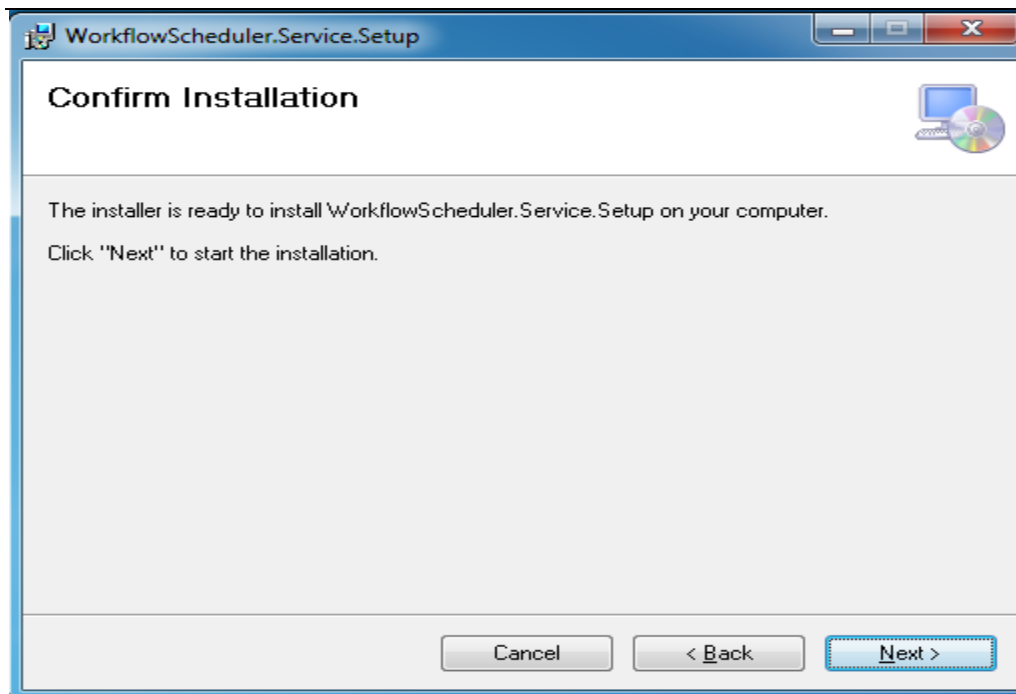
- When you clicked on WorkflowScheduler.Service.Setup file, workflow Scheduler set up wizard window will be displayed and click on Next.



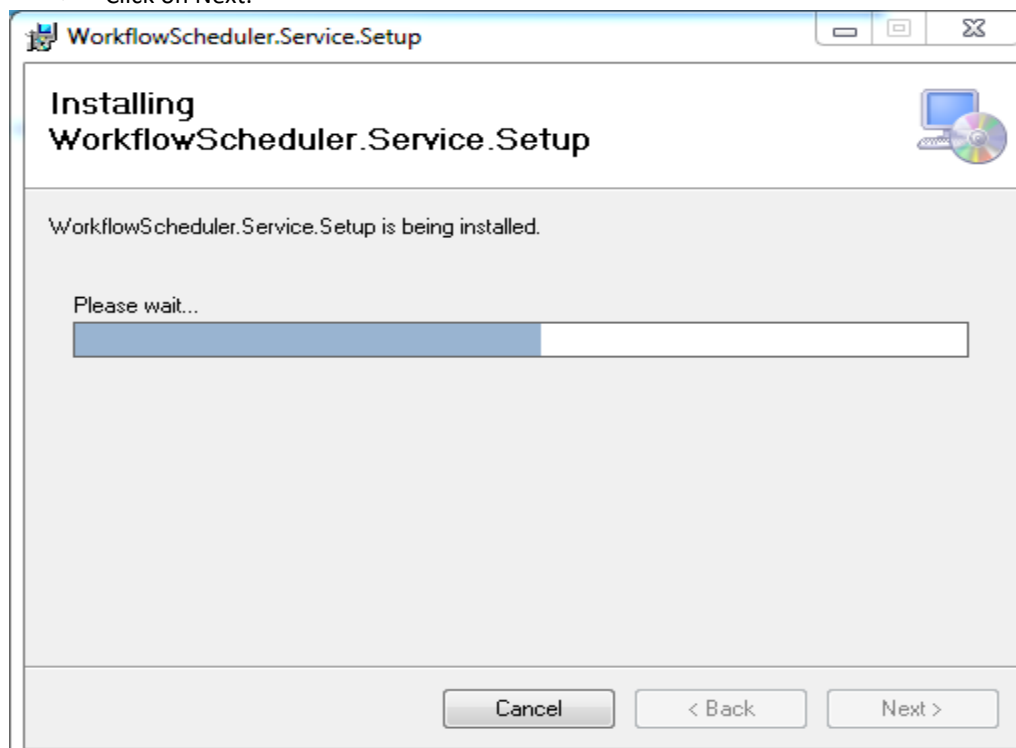
- Browse the path, where you want to install and click Next.



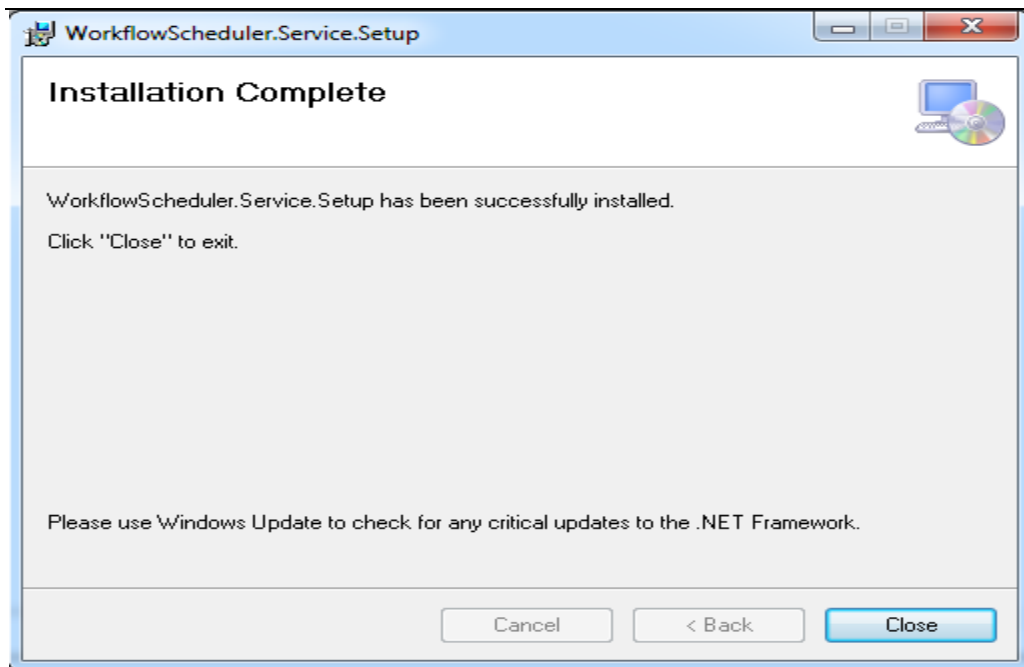
- Click Next. System will navigate to confirm Installation window.



- Click on Next.

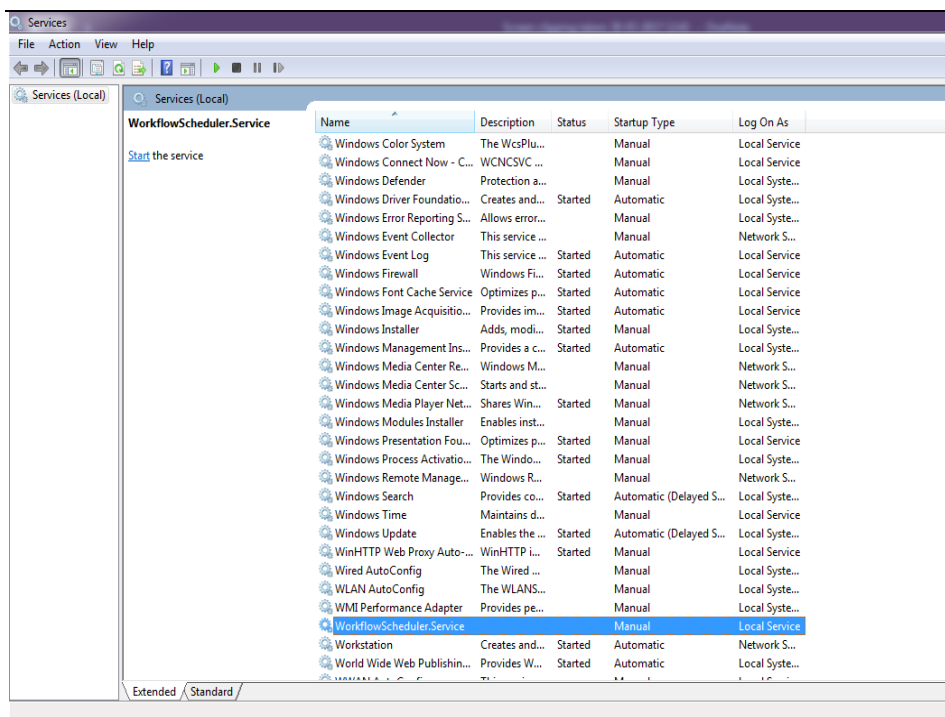






On completion of installation, a folder named "WorkflowScheduler.Service.Setup " will be created in the selected path and a service named "WorkflowScheduler.Service" will be available under the Services.msc utility in the system.

 WorkflowScheduler.Service.Setup	30-03-2017 12:41	File folder
---	------------------	-------------



Navigate to the path provided during installation and then open the file named “WorkflowSchedulerWindowsService.exe” of type “CONFIG” and enter the information in below mentioned format.

Name	Date modified	Type	Size
.vs	23-03-2017 12:25	File folder	
Microsoft.Crm.Sdk.Proxy.dll	22-03-2017 18:15	Application extens...	259 KB
Microsoft.Xrm.Sdk.dll	22-03-2017 18:15	Application extens...	520 KB
System.Net.Http.dll	28-05-2014 04:35	Application extens...	82 KB
WorkflowSchedulerWindowsService	30-03-2017 12:00	Application	33 KB
WorkflowSchedulerWindowsService.exe	23-03-2017 12:20	CONFIG File	1 KB
WorkflowSchedulerWindowsService.InstallState	30-03-2017 12:41	INSTALLSTATE File	8 KB

```
<?xml version="1.0" encoding="utf-8" ?>

<configuration>

  <startup>

    <supportedRuntime version="v4.0" sku=".NETFramework,Version=v4.5.2" />

  </startup>

  <appSettings>

    <add key="CRM.OrganizationUri" value="organizationURL/XRMServices/2011/Organization.svc"/>

    <add key="CRM.UserName" value="username"/>

    <add key="CRM.Password" value="password"/>

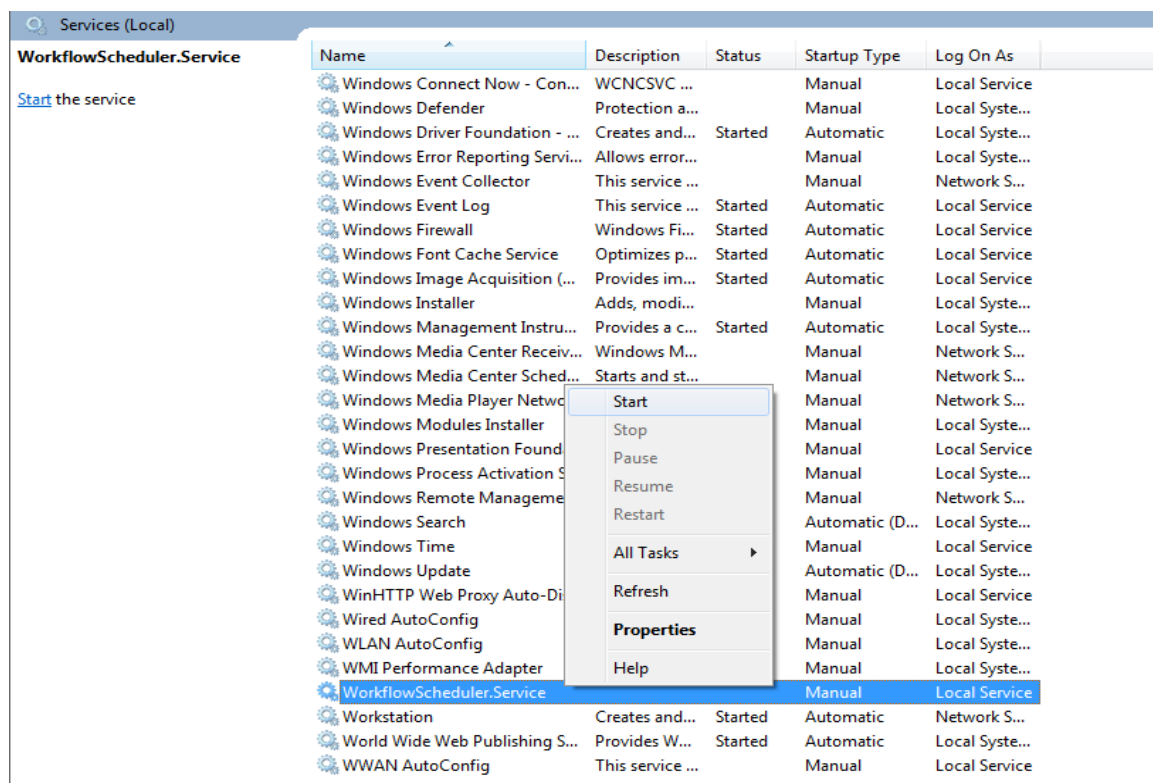
    <add key="CRM.DiscoveryUri" value="CRM discovery URL"/>

    <add key="LogPath" value="Log file path"/>

  </appSettings>

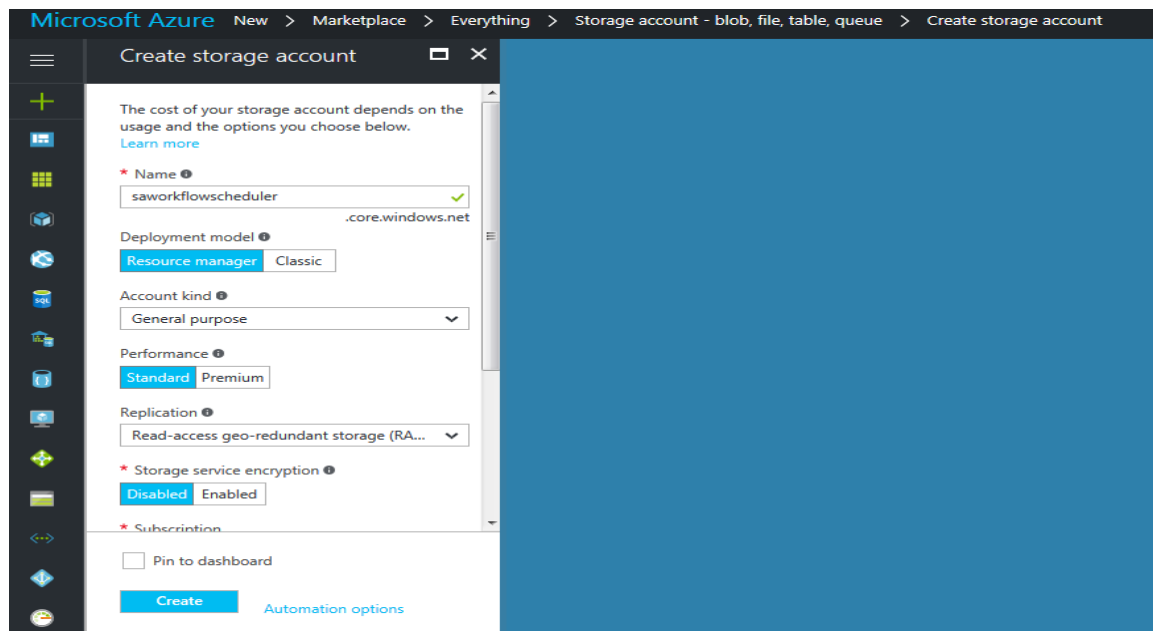
</configuration>
```

- Open the Services.msc and then start the services for the Workflow scheduler.

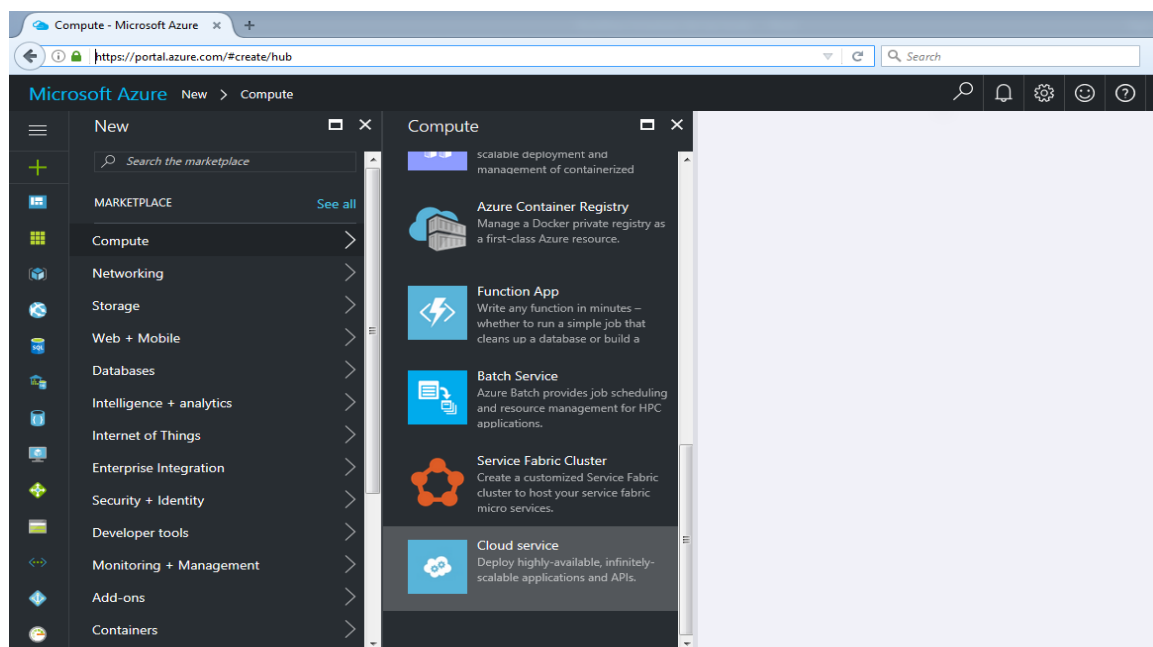


## 2.3 Steps to Configure Workflow scheduler on Azure Portal:

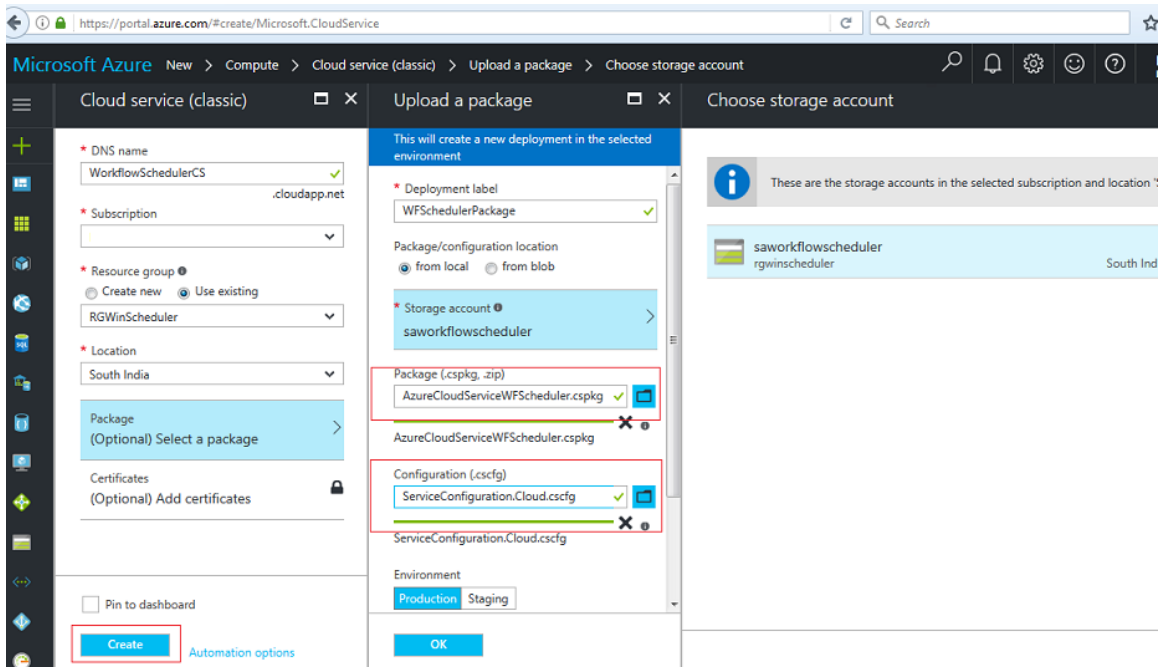
1. Login into the Azure portal.
2. Create a storage account with appropriate details.



3. Click on New > Compute and select Cloud service.

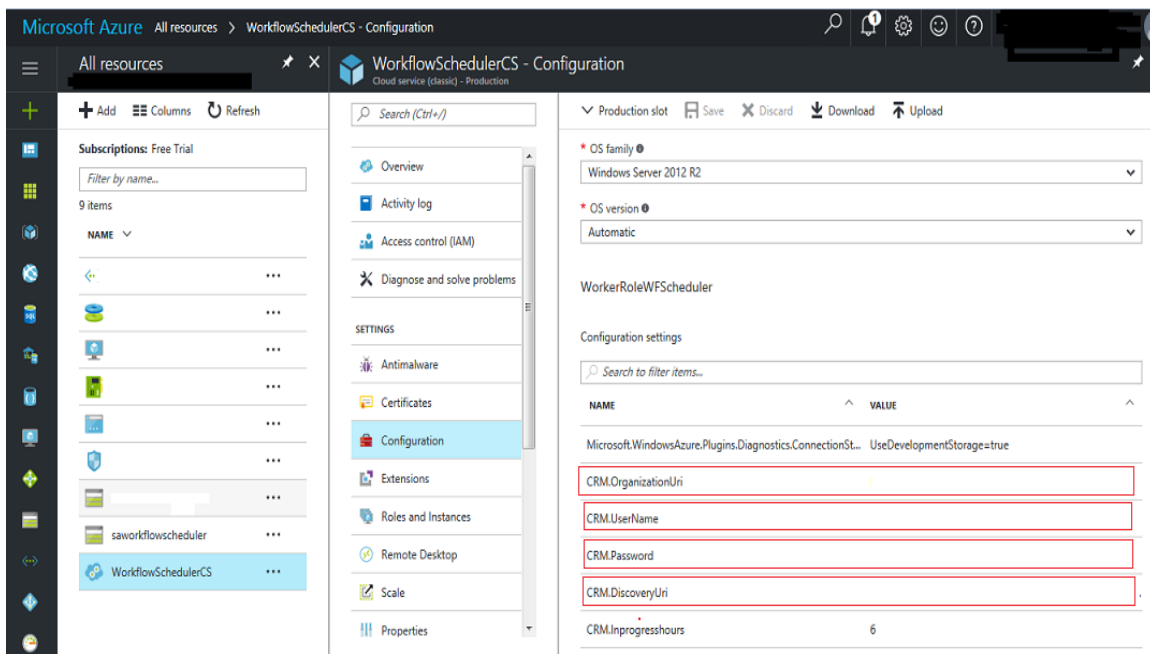


#### 4. Create a Cloud service and add the packages from the drive where the package is available.



The screenshot shows the 'Create Cloud service' wizard in the Microsoft Azure portal. The 'Upload a package' tab is selected, and the 'Create' button is highlighted with a red box. The wizard includes fields for DNS name, Subscription, Resource group, Location, Package, and Configuration. The 'Create' button is located at the bottom left of the wizard.

#### 5. Click on Cloud service to manage the service as per the business requirement.



The screenshot shows the 'WorkflowSchedulerCS - Configuration' page in the Microsoft Azure portal. The 'Configuration' tab is selected, and the 'Configuration' button in the left sidebar is highlighted with a red box. The configuration page includes settings for OS family, OS version, and Configuration settings. The 'Configuration' button is located in the left sidebar.

