

Mobile Barcoding Application (MBA) for Microsoft Dynamics 365 Business Central

WMS LITE by Calsoft System is a robust mobile barcoding application that seamlessly integrates with Microsoft Dynamics 365 Finance & Operations/Microsoft Dynamics 365 Business Central as well as Microsoft Dynamics AX and Microsoft Dynamics NAV. WMS LITE is designed to increase operational accuracy, efficiency, visibility and control of your warehouse operations and inventory processes. **WMS LITE** provides a user-friendly interface and scanning functionalities for receiving, pick/pack/ship, physical/cycle count and transfer.

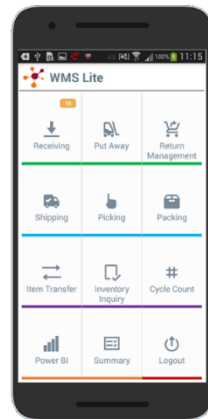
Scanning capability for :

- Picking Management
- Packing Management
- Shipping Management
- Receiving Management
- Inventory Management
- Dynamics 365 Integration



Devices/Scanners:

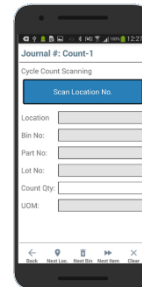
- Zebra G Series
- Samsung Android Phone
- Zebra Z Printer



Main Menu



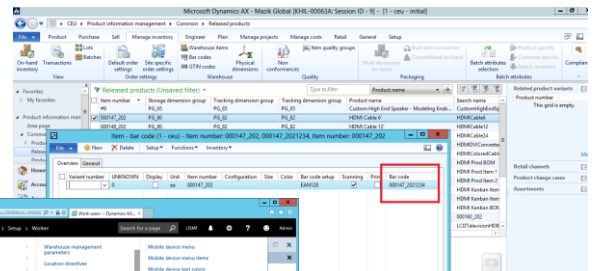
Receiving



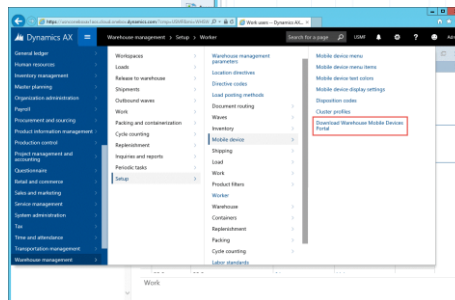
Cycle Count



Transfer



Scanned Barcodes in Microsoft Dynamics 365



WMS Barcode Scanner Setup in Microsoft Dynamics 365

Features:

- ❑ Robust Scanning Solution with 1 to 10+ Warehouses
- ❑ High performance yet affordable
- ❑ Full Integration with an order management system (Dynamics 365 Finance & Operations/Business Central)
- ❑ Scalable & flexible for longevity and high ROI
- ❑ Capable with cost-effective Android mobile phone
- ❑ Easily customizable field to meet unique requirements

Benefits:

- ❑ Accurate inventory control by serial/ lot number tracking and several different allocation methods
- ❑ Efficient inventory management with comprehensive functionalities, such as flexible location management, wave picking, license plate and UOM/packing management
- ❑ Visible inventory by packing/shipping status management and rich reporting functionalizes
- ❑ Improve customer service with "live" status and data

Boost Accuracy, Efficiency, and Visibility of your Warehouse Operations!

WMS LITE provides real-time visibility, accurate inventory control and affordable efficiency to your warehouse. Inventory is the life blood of your business. To gain competitive advantage in the market, it is critical to speed-up, control and optimize your supply chain cycle.

Accuracy : Serial/ Lot number tracking, Several different allocation methods, EDI*, and Order management systems.

Efficiency : Flexible location management, Wave picking*, UOM/Packing management, Inventory count functions

Visibility : Receiving/Packing/Packing/Shipping/order status management.

*These functions are required to be configured and implemented in Microsoft Dynamics 365 first in order to scan the barcodes by WMS LITE.

Core Barcode Features :

- Picking Management
- Packing Management
- Shipping Management
- Receiving/RMA Management
- Inventory Management
- Bin Management
- Wave Picking
- Stage Packing
- Bin Allocation
- Cycle Count
- Grid View display
- Serial/Lot # Management
- 1D / 2D Barcode Scanner Capable
- Fully Interface with Dynamics 365



CALSOFT SYSTEMS provides business applications to multi hundreds of mid-sized to large companies.

CALSOFT SYSTEMS has been a software development house and implementer of business solution for hundreds of companies over the past 15 years. CALSOFT focuses on providing mid to large sized companies with not only barcode scanning solutions but also accounting, distribution, manufacturing, e-commerce, and other core business solutions.

CALSOFT, an award-winning Microsoft partner, is consistently recognized for its technical expertise, outstanding performance and unparalleled customer service. Our list of long-standing clients is a testimony to our professionalism and to our commitment to client relationships.



*Contact Calsoft offices below to reach our knowledgeable staff.

Headquarters

19701 Hamilton Ave.,
Suite 190
Torrance, CA 90502
TEL : 310.532.5000
FAX : 310.225.5690

New York Office

183 Madison Avenue,
Suite 817
New York, NY 10022
TEL : 212.804.7650
FAX : 212.481.4524

Chicago Office

1827 Walden Office Square,
Suite 410
Schaumburg, IL 60173
TEL : 847.397.5800
FAX : 847.397.1572