



## The route optimization solution in the cloud

TourSolver Cloud is a web-based route optimization solution which enables logisticians, planners and all mobile resources a simple means of defining optimal route plans. Delivery drivers, technicians and sales forces spend less time on the road, and more time with satisfied customers.

TourSolver is THE 100% cloud optimization solution, easy-to-use, profitable and suited to all businesses and fleet sizes.



### Easy to use

Thanks to its user-friendly interface and its integrated online help, TourSolver is available for immediate use and do not require any training. The user is guided step-by-step through each optimization stage and the overall configuration is recorded when first going online.



### 100 % cloud

No installation, automatic updates and secured data: TourSolver is a ready-to-use SaaS solution! Never before has route optimization been so accessible, simple, quick and efficient...



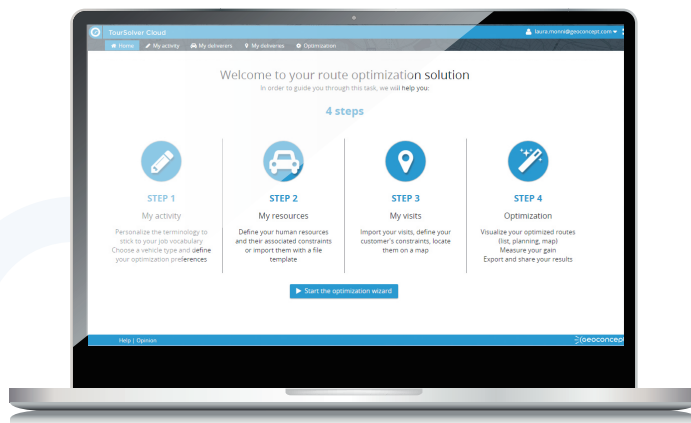
### Business oriented

Visits, calls, deliveries, pick-ups... the solution adapts to the user's business. Depending on the defined activity (logistical, technical, commercial) the constraints taken into consideration are automatically tailored to business specifics (e.g.: vehicle capacity for delivery staff, skills for the technicians...).



### Profitable

Reducing as it does distance and travel time, TourSolver Cloud enables you quickly to score some major wins : 15% reduction in mileage and associated costs, greater productivity, better customer service, lower CO<sub>2</sub> emissions...



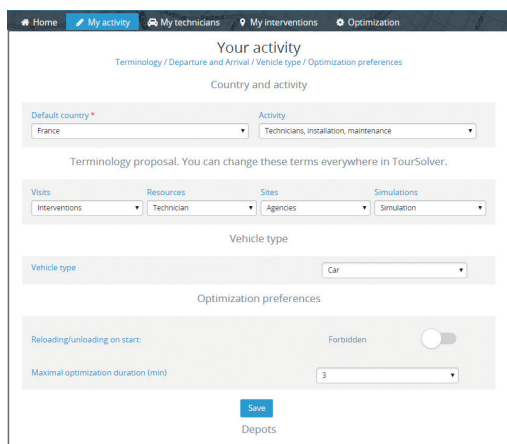
## Define relevant, realistic and profitable routes in 4 steps!

Never before has route optimization been so accessible, simple, quick and efficient.

[www.toursolver.com](http://www.toursolver.com)

### 1 Configuring the activity

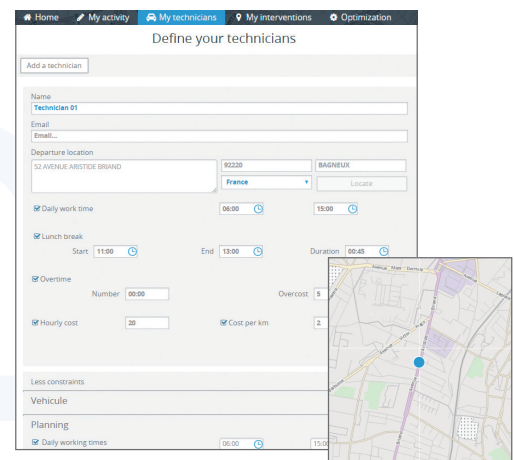
Customizing the interface, configuring the terminology, selecting the appropriated vehicle type, defining the features of the depots...



*customization on first login*

### 2 Defining the resources

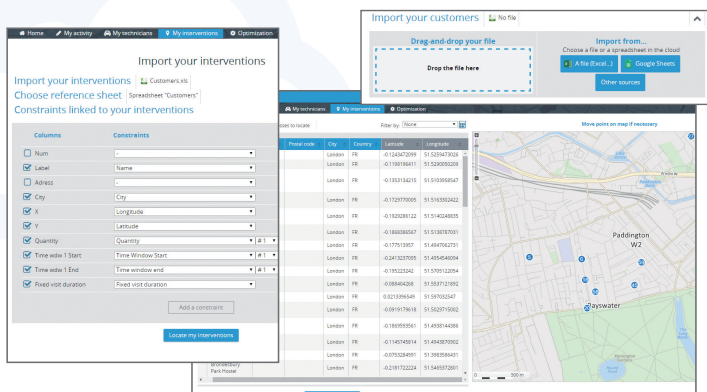
Creating teams with common parameters and specific characteristics (departure/arrival point, working hours, allocation, e-mail...).



*automatic location of the teams*

### 3 Importing and geocoding customers

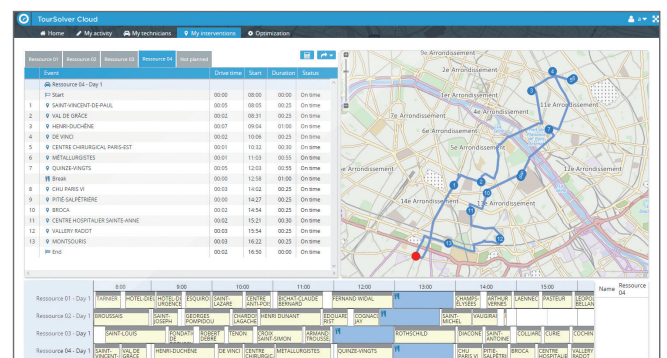
Importing data using drag-and-drop, mapping wizard, taking into account numerous constraints, location of visits, geocoding statistics, interactive treatment of incorrect or incomplete addresses...



*taking into account of numerous constraints: loading time, availabilities, delay penalty...*

### 4 Optimizing routes

Multi-routes plan, history of simulations, savings simulator, auto-diagnose, presentation of optimized routes (list, Gantt, map), modifying a routes plan manually, several export formats (Excel, PDF, iCal, etc)...



*optimized routes for several resources over several days*

Get the trial version on [www.toursolver.com](http://www.toursolver.com)

You should use TourSolver!



Multi-constraints optimization engine



API for integration into an existing application



Wide geographical coverage (91 countries)



fast ROI: 10 to 30% productivity gains