

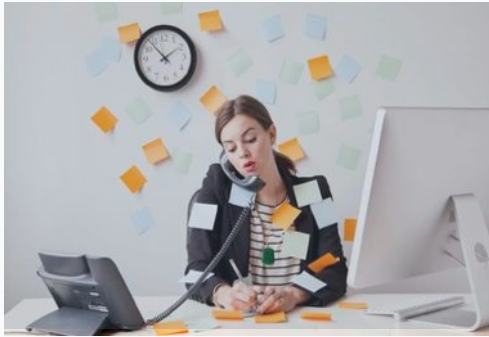
Woffu

HR Digitalization in the Era of Liquid Work



Employee time management

Where we expect easiness and scalability and see only frustration and inefficiency



Holidays, control of working hours, work shifts are **highly sensitive topics for employees**



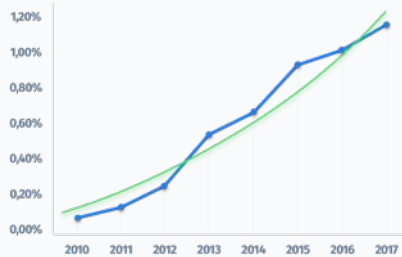
Managers & directors cannot optimize workflows because they do not have accurate information on employee presence & rhythm



The HR organization is wasting significant time fixing processes that are not adapted to the organization

Employee time management

Where we expect easiness and scalability and see only frustration and inefficiency



Employee retention:
the % of voluntary resignations
keeps growing



Employee recognition:
employees appreciate having
an emotional link with their
employer

50%
of companies
admit to problems of
internal communication

2+ hours
per month

Work time lost to
unjustified absenteeism



Paperwork & frustration
Loan requests, Tax day...
Unavailability of official documents
creates tensions for employees & HR

A Modular Product addressing the needs of all stakeholders



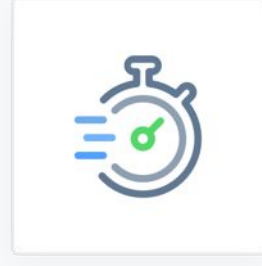
We created Woffu to...



Improve communication within a company and strengthen employee commitment



Facilitate employee time management and make it more efficient for HR & team Managers



Remove administrative hassles and allow employees to focus 100% on their real job



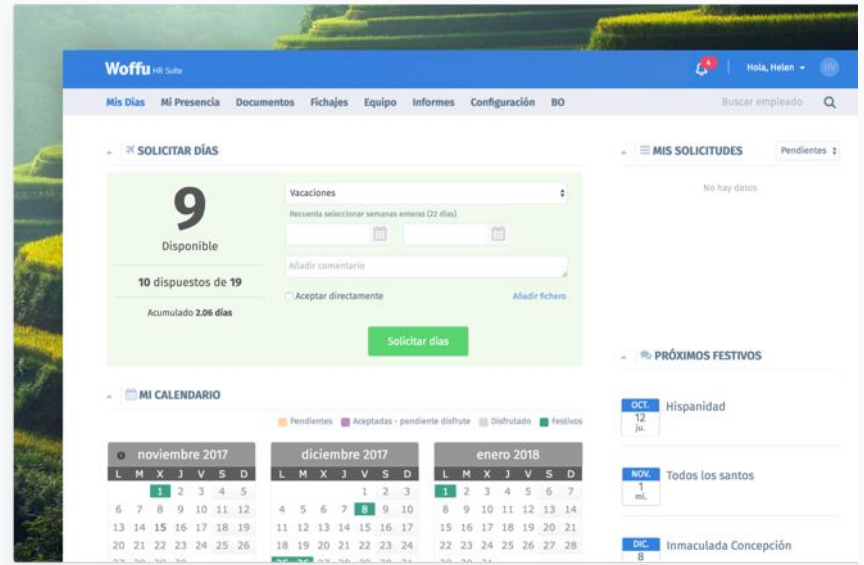
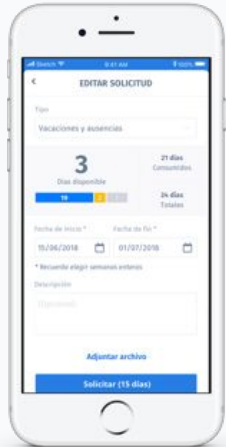
Gain transparency

...provide a fully integrated employee portal

Product: Absences

Vacation, leave, absence request & authorization

- Request in 3 clicks, validation with full info in one single screen
- Anytime, Anywhere (web & mobile)
- Managers have a centralized view of their team, and alerts
- Full compliance with laws & regulations, corner cases...
- Yet fully adaptable to custom rules



Success Cases

- This is our historical and most used product
- Has proven to save **84.3%** of time spent on absence & vacation management processes
- Alone, represents a minimum of **50%** financial savings

Product: Presence

Monitoring attendance & work schedule

- Easy sign-in & out for employees, from our apps, web & mobile
- Integrations with partners for badge/fingerprint devices
- Completely natural to avoid negative feelings
- Unlimited variety of schedules per office, department, team...
- Full compliance with evolving laws & regulations



Fecha	Motivo	Horas motivo	Entrada	Salida	Descansos	Horario Contrato	Total horas	Diferencia	Confirmado	Observaciones
Lunes 01/01/2018	Año nuevo						0.0	0.0	✓	
Martes 02/01/2018			08:55:00	18:24:00	1.0	8.0	8.5	0.5	✓	
Miércoles 03/01/2018			08:02:00	18:04:00	1.0	8.0	9.0	1.0	✓	
Jueves 04/01/2018			09:25:00	17:58:00	1.0	8.0	7.6	-0.5	✓	
Viernes 05/01/2018			09:01:00	18:03:00	1.0	8.0	8.0	0.0	✓	
Sábado 06/01/2018	Epifanía del Señor						0.0	0.0	✓	
Domingo 07/01/2018							0.0	0.0	✓	
Lunes 08/01/2018			08:55:00	17:59:00	1.0	8.0	8.1	0.1	✓	
Martes 09/01/2018			09:02:00	18:11:00	1.0	8.0	8.2	0.2	✓	
Miércoles										

Success Cases

- This is our historical and most used product
- Has proven to save **93.2%** of time spent on recording and control of work schedules
- Represents a minimum of **60%** financial savings

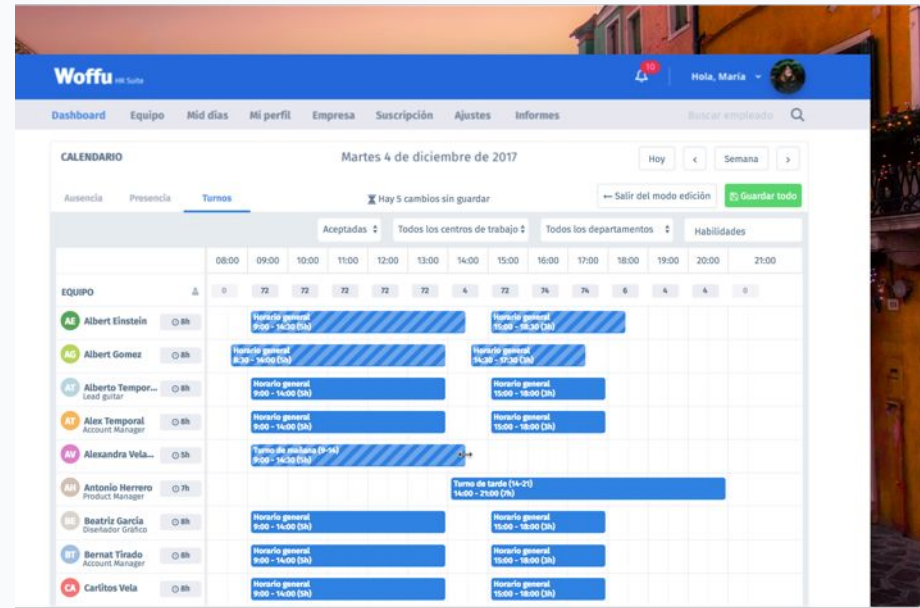
Product: Shift management

Shift planification and work cycle assignment

- Easy visualization of covered and uncovered shifts
- Direct assignment of shifts and modification from the calendar
- Instantaneously reassign shifts based on availability

A desktop application interface for shift management. The top navigation bar includes 'Ausencia', 'Presencia', and 'Turnos'. The main content area shows a calendar for 'Martes 4 de diciembre de 2017'. Below the calendar, there is a list of employees with their assigned shifts. The employees listed are Albert Einstein, Albert Gomez, Alberto Temporal, Alex Temporal, Alexandra Vela, Antonio Herrero, Beatriz Garcia, Bernat Tirado, and Carlitos Vela. Each employee's shift is represented by a colored bar indicating the time range and the shift type (e.g., 'Turno de mañana', 'Turno de tarde', 'Horario general').

Equipo	lunes 9	martes 10	miércoles 11	jueves 12
Albert Einstein	hola 9:00 - 17:00 (8:00h)	hola 9:00 - 17:00 (8:00h)	hola 9:00 - 17:00 (8:00h)	hola 12:00 - 17:00 (5:00h)
Albert Gomez	hola 9:00 - 17:00 (8:00h)	hola 9:00 - 17:00 (8:00h)	hola 9:00 - 17:00 (8:00h)	hola 13:00 - 17:00 (4:00h)
Alberto Temporal	hola 9:00 - 17:00 (8:00h)	hola 9:00 - 17:00 (8:00h)	Día de descanso	hola 13:00 - 17:00 (4:00h)
Alex Temporal	hola 9:00 - 17:00 (8:00h)	hola 9:00 - 17:00 (8:00h)	Día de descanso	hola 13:00 - 17:00 (4:00h)
Alexandra Vela	Turno de mañana (9-14) 9:00 - 17:00 (8:00h)	Turno de mañana (9-14) 9:00 - 17:00 (8:00h)	Turno de mañana (9-14) 9:00 - 17:00 (8:00h)	Turno de mañana (9-14) 9:00 - 17:00 (8:00h)
Antonio Herrero	Turno de tarde (14-21) 14:00 - 21:00 (7:00h)	Turno de tarde (14-21) 14:00 - 21:00 (7:00h)	Turno de tarde (14-21) 14:00 - 21:00 (7:00h)	Turno de tarde (14-21) 14:00 - 21:00 (7:00h)
Beatriz Garcia	Día de descanso	Día de descanso	Horario completo (9-18) 9:00 - 18:00 (9:00h)	Horario completo (9-18) 9:00 - 18:00 (9:00h)
Bernat Tirado	hola 9:00 - 17:00 (8:00h)	hola 9:00 - 17:00 (8:00h)	hola 9:00 - 17:00 (8:00h)	Día de descanso



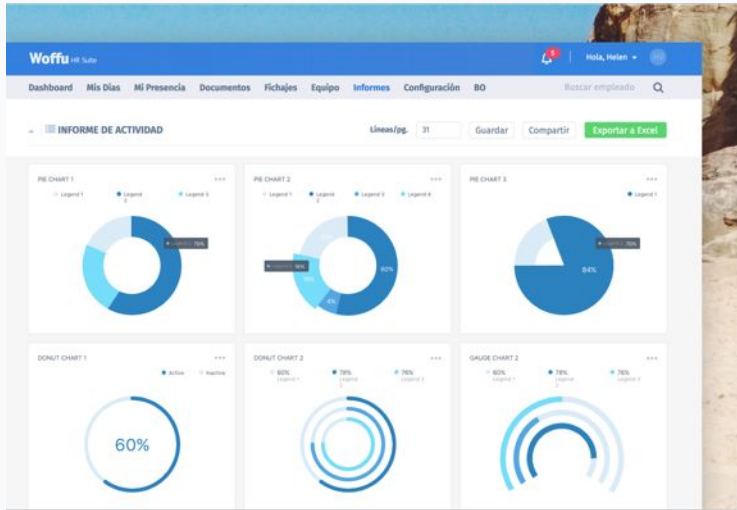
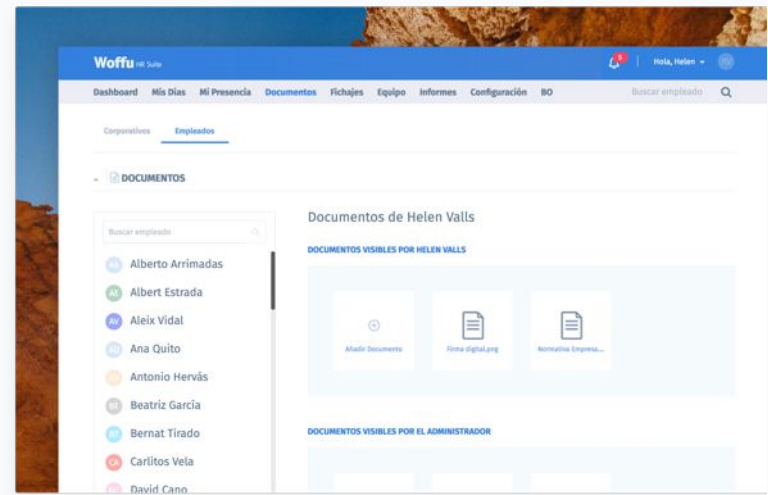
Future developments

- Direct communication between employees to exchange shifts
- Use AI to automatically assign shifts based on personnel and levels of activity

Product

Centralized HR documentation center

- Document sharing between HR and employees, with complete confidentiality or including manager/team members
- Security guaranteed by the highest cloud quality (Azure)
- Folders for paystubs, contract, receipts, ID...
- Integrated with major payroll software: Meta4, SAP, Sage...



Activity reporting

- KPI for HR management in one centralized console
- Directly observe absenteeism, vacation status, schedules...
- Share reports with managers

450 customers trust Woffu

Retail



vivarte BROWNIE



Industry / Energy



Lodging / Food & Beverages



Services



Real Estate



Pharmaceuticals



Tech / Online



habitissimo



Woffu