

making IoT happen, **together.**



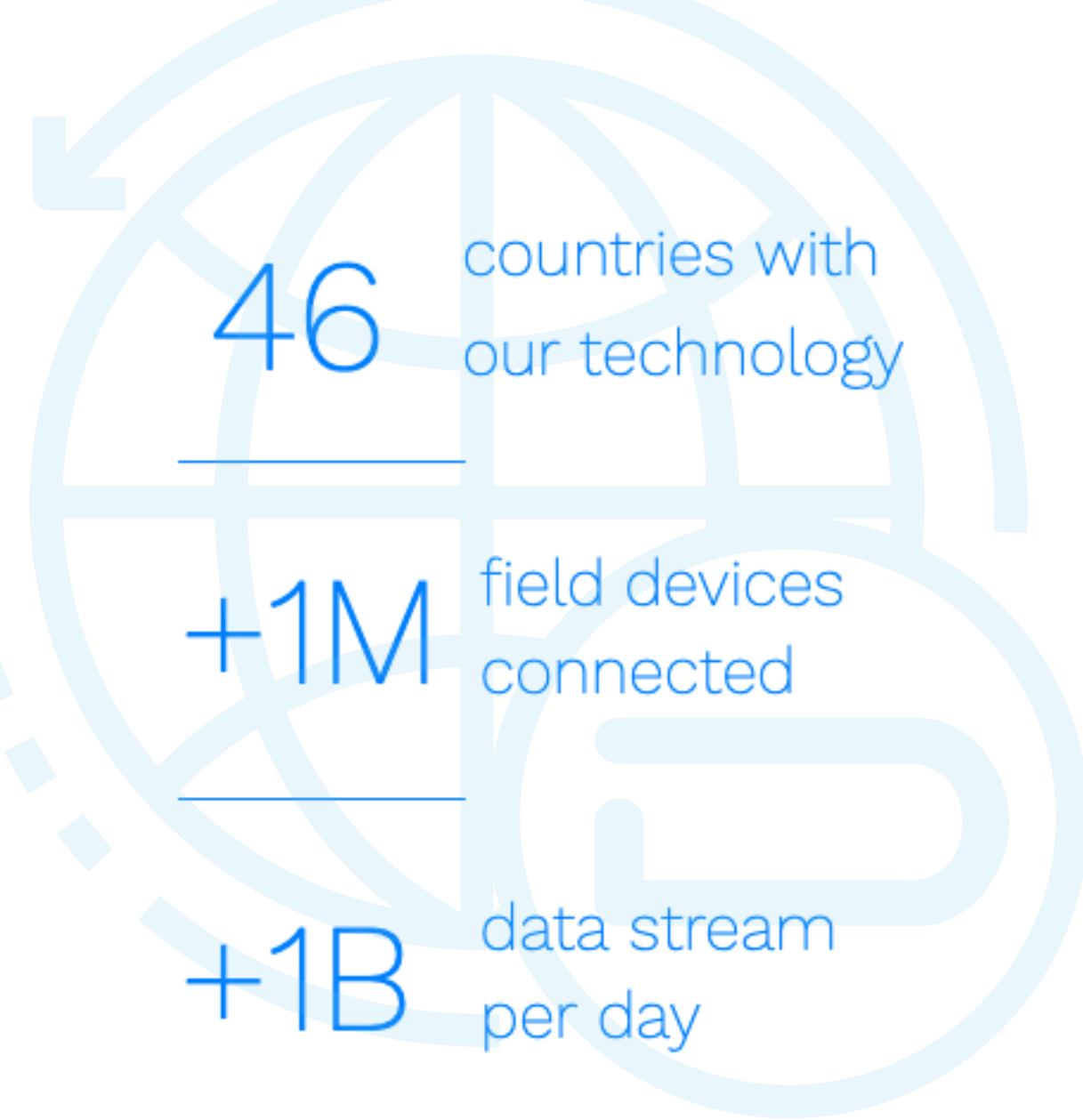
IoT edge platform by Domatica

about us

Pioneers in M2M/IoT with more than 15 years of experience.

Domatrica is a company specialized in IoT technology focused on bridging the gap between the physical world and the logical world of software. Since its inception in 2002, we have sought to address this major issue of IoT, with a completely differentiating approach, now the so-called IoT Edge. In this sense, using all the expertise of our multidisciplinary team, we have created easy-edge, a flexible, reliable, robust and secure IoT Edge platform that allows virtually any device to be connected to any type of application in a simple and easy way.

Domatrica operates in a B2B perspective, privileging strategic partnerships with market players, such as software or hardware manufacturers. Through them it was possible for Domatrica to put its technology at the service of numerous IoT projects around the world.



partners with us

Our market positioning is as an IoT edge middleware company, operating from a B2B perspective, privileging strategic partnerships. It is with great satisfaction that we say that our partners are our clients and our clients are our partners.



and more...



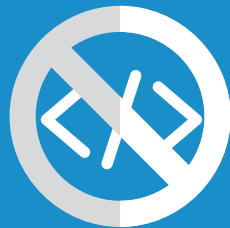
IoT edge platform by Domatica

The easiest way to connect devices to IoT applications

The easyedge is an IoT Edge platform that deeply reduces the complexity and cost of using and managing devices in applications, enabling developers to deploy their IoT solutions extremely easy and fast, facilitating IT/OT convergence.

Reasons why easyedge is your best choice...

Zero coding



Connect field devices right away without writing a single line of code.

Dataflow



Intuitive Dataflow (drag & drop) design for data orchestration.

Less time, more profit



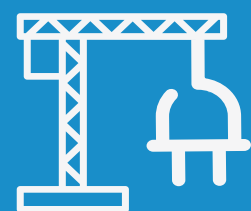
Minimize engineering resources, decrease infrastructure costs, speed up deployment.

Easy setup



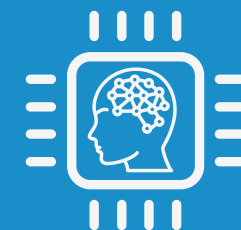
User-friendly cloud platform to configure your systems in few minutes.

Connector Engine Builder



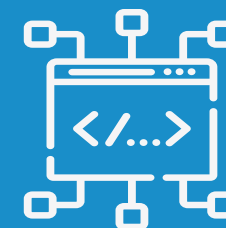
Seamlessly create Southbound and Northbound Connectors that ease technology integrations.

Edge intelligence



Powerful rules engine that works locally without relying on cloud communications.

Runs anywhere



Ultra lightweight software that runs in (virtually) any hardware architecture.

Security

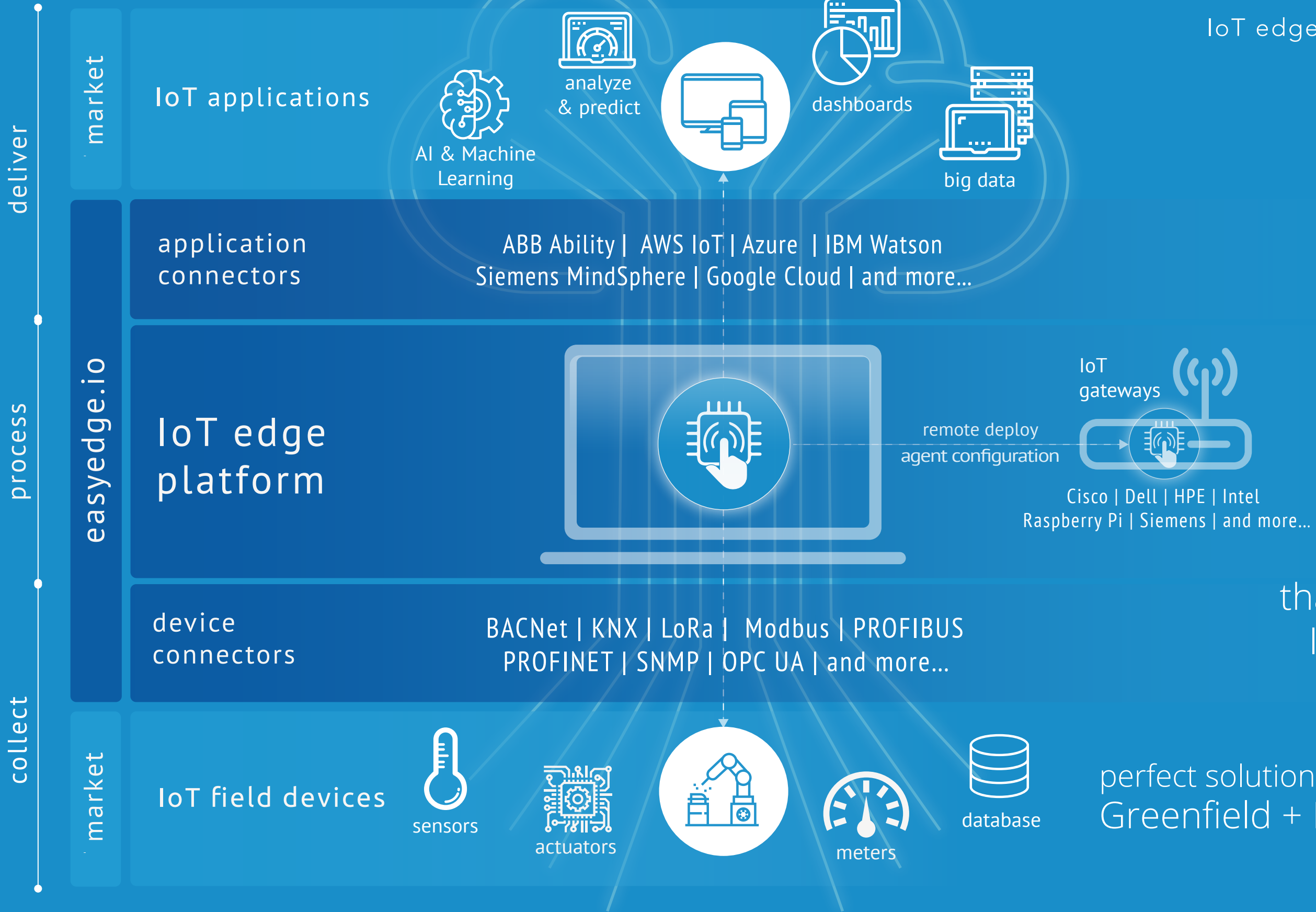


Highest standards encryption ensuring integrity and origin of data (non-repudiation principle).

tree of architecture concept



IoT edge platform by Domatoca



easyedge makes more

than 80% of your IoT project happen

perfect solution
Greenfield + Browfield

use cases



Industrial

- M2M/IoT communications
- Indoor climate management
- Production optimization
- Resources management
- Logistics management
- Maintenance optimization



Building Automation

- Access and lighting control
- Energy management
- Indoor climate management
- Multiple standards connectivity
- Real-time alerts
- Automated daily routines



Smart Cities

- Resources Management
- Smart Grid
- Smart Parking
- Traffic Management
- Street Lighting Management
- EV Charging Management



Energy Management

- Load management
- Energy quality management
- Batteries management
- Renewable energy management
- Genset management
- Remote reset management



Agrobusiness

- Crop Management
- Irrigation Management
- Livestock Welfare Management
- Resources Management
- Environmental Management
- Remote Devices Management



Transport & Logistics

- Fleet Management
- Quality of Shipment Conditions
- Assets Location
- Cargo Management
- In-Vehicle Monitoring



Digital HealthCare

- Fall Detection
- Patients Surveillance
- Medical Fridges
- Medicine Dispensers
- Security Surveillance
- Hospital Asset Management



Environment

- Green Spaces Management
- Waste Collection Management
- Water Quality Management
- Air Pollution Management
- Forest Fire Detection
- Snow Level Monitoring

what people say



"ABB Ability™ is our unified, cross-industry digital offering that enable our customers to know more, do more, do better, together. Thanks to our digital services and multi segment expertise, ABB Ability™ solutions turns insights into the direct action that "closes the loop" and generates customer value in the physical world. The easyedge.io platform empowers our ABB Ability™ digital solutions with great IoT Edge capabilities, which includes a vast library of southbound connectors, allowing us to dramatically reduce engineering costs and time in our IoT projects, both in greenfield and brownfield. We are really glad to write the digital future. Together."



Pau Masgrau Fortuny
Market Development Manager
IoT & Industry 4.0 - ABB Ability™



"Domatiga's easyedge allows us to monitor our IoT Laboratory in real time. The easyedge is a perfect example of a flexible and powerful IoT solution integrating sensors and devices from different manufacturers and extracting valuable information."



Jorge Bonifácio
Technology Strategy Director
Altice Portugal



"The easyedge platform from DOMATICA allows us to add Edge functionality to our standard MindSphere connectivity elements and has been of key importance for the implementation of multi-protocol applications on brownfield installations, expanding "edge to cloud" offer on industrial projects, in a new and challenging digital world."



João Queiroz
Digital Enterprise Coordinator
Siemens S.A.

view more at domatica.io

